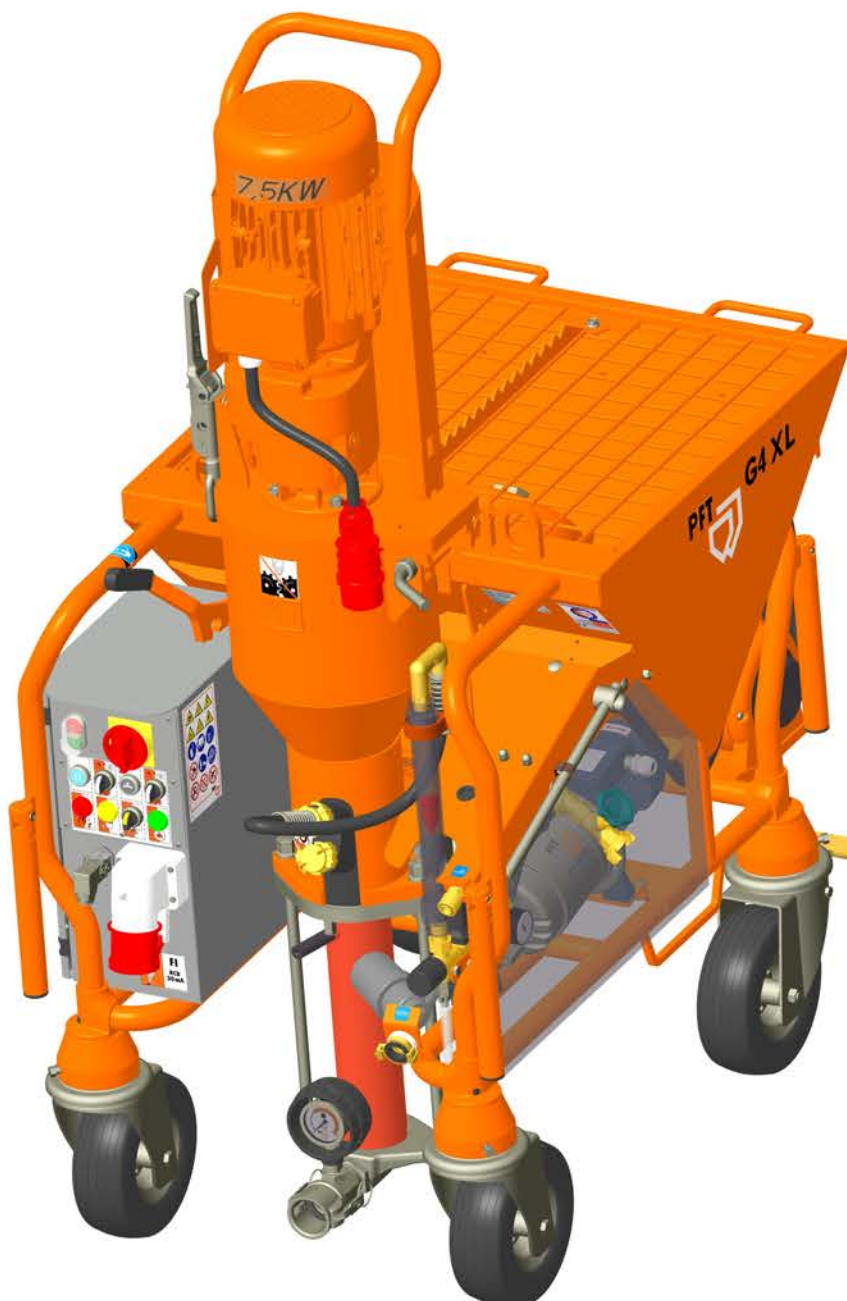


Ersatzteilliste / Spare parts list

PFT Mischpumpe / Mixing pump G 4 super / G 4 XL



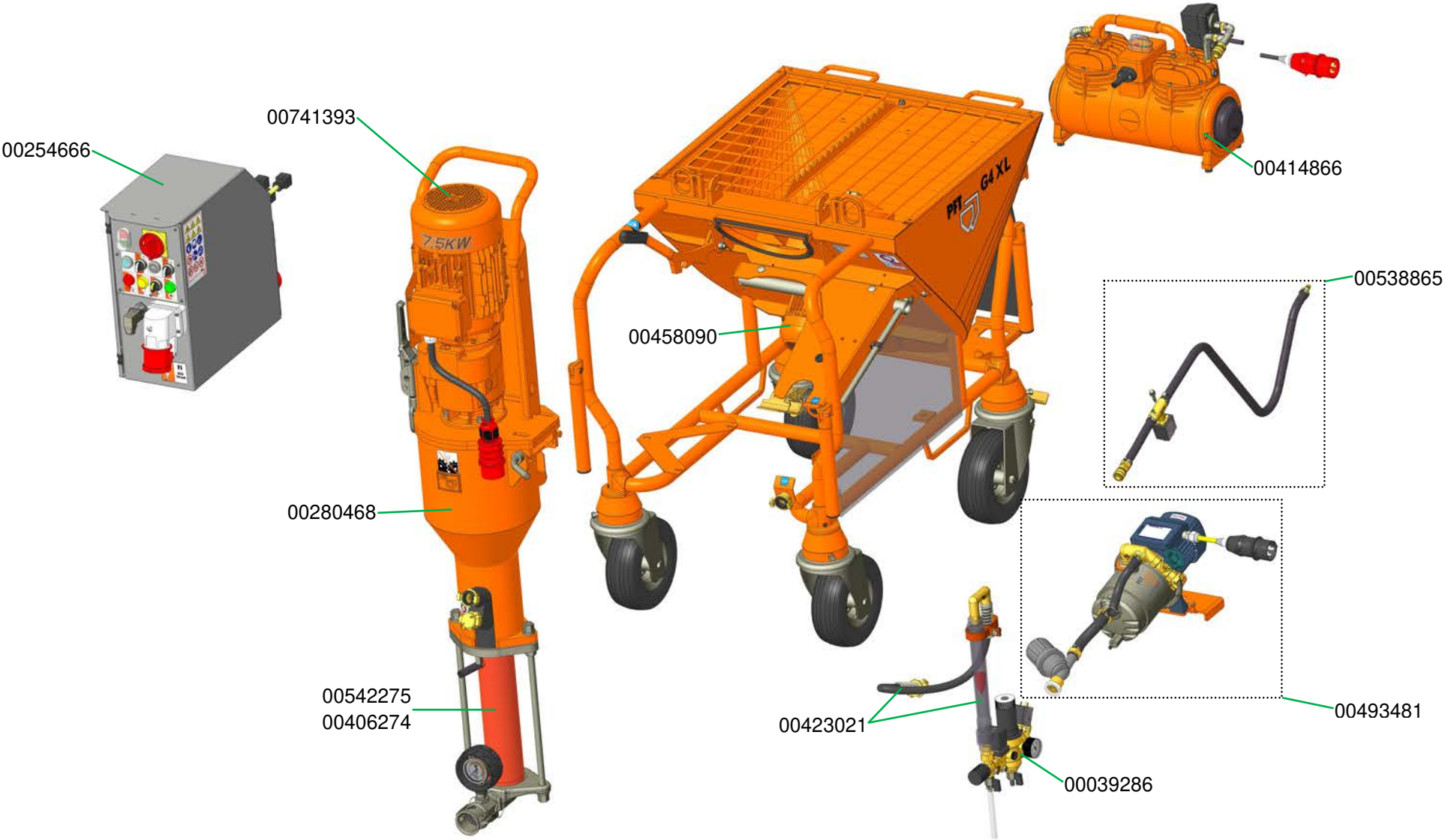
Art.-Nr. / part number	Benennung	Designation
00406795	G 4 XL, 400 V, 3 Ph, 50 Hz mit AV 1000	G 4 XL, 400 V, 3 Ph, 50 Hz with AV 1000
00414171	G 4 super, 400 V, 3 Ph, 50 Hz mit AV 1000	G 4 super, 400 V, 3 Ph, 50 Hz with AV 1000
00423947	G 4 super, 400 V, 3 Ph, 50 Hz mit AV 1000, Feinputzgerät DN25-360° S14600-30° Geka und Zubehör	G 4 super, 400 V, 3 Ph, 50 Hz with AV 1000, Spraying gun DN25-360° S14600-30° Geka and accessories
00788682	G 4 Super Gima Edition	G 4 Super Gima Edition

Übersicht G 4 XL, 400 V, 3 Ph, 50 Hz mit AV 1000 Art.-Nr. 00406795.....	6
Overview G 4 XL, 400 V, 3 Ph, 50 Hz with AV 1000 part number 00406795.....	6
Übersicht G 4 super, 400 V, 3 Ph, 50 Hz mit AV 1000 Art.-Nr. 00414171	7
Overview G 4 super, 400 V, 3 Ph, 50 Hz with AV 1000 part number 00414171.....	7
Übersicht G 4 super, 400 V, 3 Ph, 50 Hz mit AV 1000 Feinputzgerät DN25-360° S14 600-30° Geka und Zubehör Art.-Nr. 00423947	8
Overview G 4 super, 400 V, 3 Ph, 50 Hz with AV 1000 Spraying gun DN25-360° S14 600-30° Geka and accessories part number 00423947	8
Übersicht G 4 super Gima Edition Art.-Nr. 00788682	9
Overview G 4 super Gima Edition part number 00788682.....	9
Fahrgestell G 4	10
Chassis G 4.....	10
Lenkrollen230 mm G 4 XL	11
Castor 230 mm steel rim G 4 XL.....	11
Materialbehälter G 4 für Sonde mit Rohrrahmen	12
Material hopper G 4 for probe with tubular frame	12
Werkzeugkasten Art.-Nr. 00706069	13
Tool box part number 00706069.....	13
Gehäuse Werkzeugkasten G 4 für Art.-Nr. 00237505	14
Housing for tool box G 4 for part number 00237505	14
Staubschürze für Kompressor G 4	15
Dust guard for compressor G 4.....	15
Gummimischrohr G 4 XL.....	16
Rubber mixing tube G 4 XL	16
Pumpeneinheit Rotor Stator D6-4 PIN WF.....	17
Pump unit Rotor Stator D6-4 PIN WF	17
Gummimischrohr G 4 super.....	18
Rubber mixing tube G 4 super	18
Pumpeneinheit Rotor Stator D6-3.....	19
Pump unit Rotor Stator D6-3	19

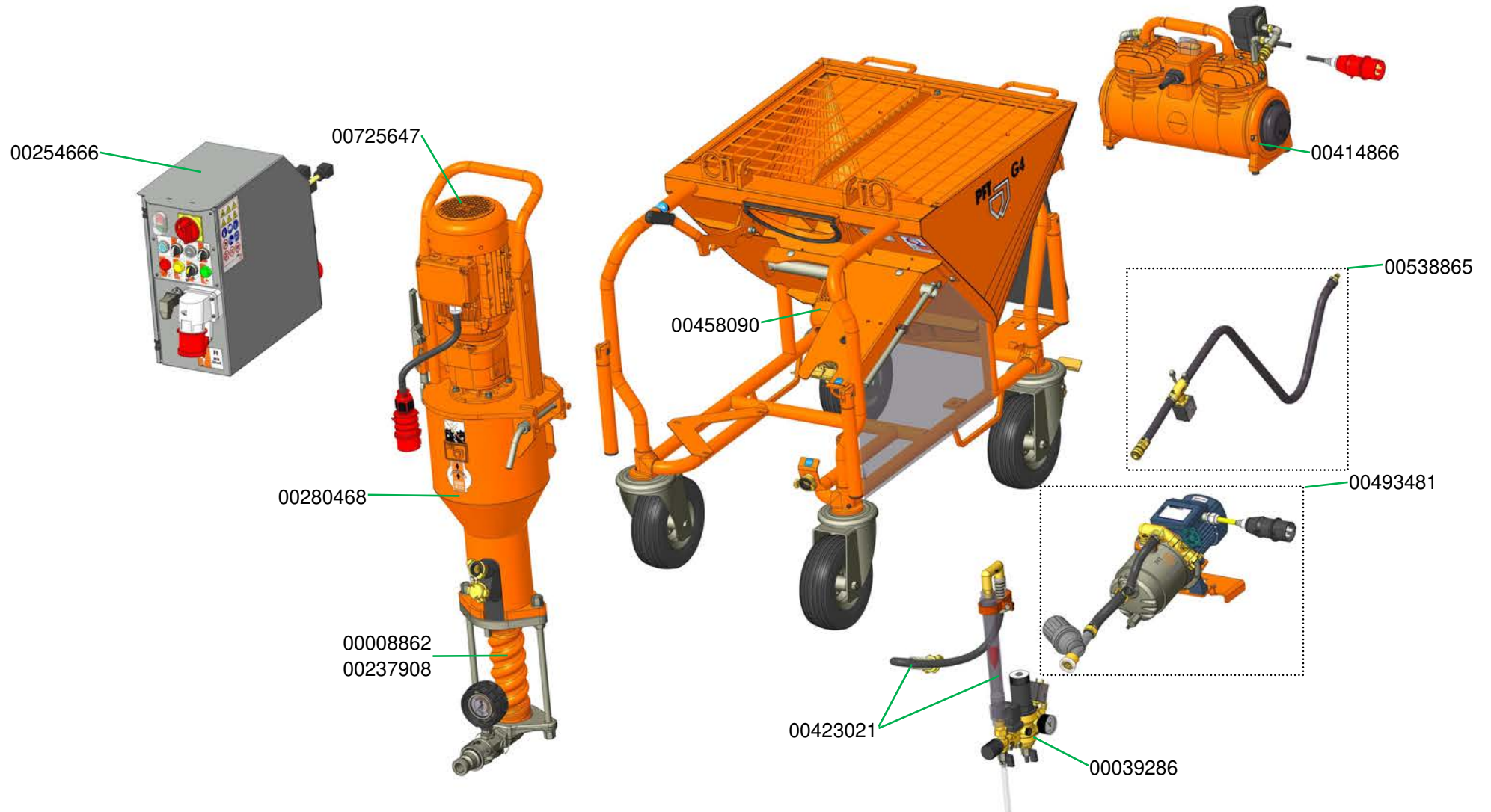
Mischrohr G 4 mit Wechselflansch	20
Mixing tube G 4 with adaptable flange.....	20
Pumpeneinheit D 6-3 für G 4 (mit Rahmen 3/4") Art.-Nr. 00168454.....	21
Pump unit D 6-3 for G 4 (with frame 3/4") part number 00168454.....	21
Reinigerwelle BIONIK G 4 verzinkt und Mischrohrreiniger D- und R-Pumpen.....	22
Cleaning shaft BIONIK G 4, galvanised and Mixing tube cleaner for D- and R-pumps	22
Abdeckung Wasser-Luft-Armatur G 4 bis 03.2021	23
Cover for water-/ air manifold G 4 until 03.2021	23
Abdeckung Wasser-Luft-Armatur G 4 ab 04.2021	24
Cover for water-/ air manifold G 4 from 04.2021	24
Luftarmatur G 4 Art.-Nr. 00538865.....	25
Air manifold G 4 part number 00538865	25
Luftkompressor COMP M-250, 400 V, 3 Ph, 50 Hz mit Drucksteuerung für G 4 (ab 2013) Art.-Nr. 00414866	26
Air compressor COMP M-250, 400 V, 3 Ph, 50 Hz with pressure control for G 4 (from 2013) part number 00414866.....	26
Luftkompressor COMP M-250 Ersatzteile	27
Air compressor COMP M-250 spare parts	27
Halterung Kompressor COMP M-250 Handy für G 4 Art.-Nr. 00248779	28
Support compressor COMP M-250 Handy for G 4 part number 00248779.....	28
Wasseranschluss G 4 mit Durchflussmesser 150 - 1.500 l/h Art.-Nr. 00423021	29
Water connection G 4 with water flow meter 150 - 1,500 l/h part number 00423021	29
Druckerhöhungspumpe AV1000/1 400V G 4 kpl Art.-Nr. 00493481	30
Water pressure booster pump AV1000/1 400V G 4 cpl part number 00493481.....	30
Armaturenblock mit Kugelhahn G 4 Art.-Nr. 00687710.....	31
Water manifold G 4 part number 00687710.....	31
Schaltschrank außen G 4 super / G 4 XL bis 02.2022 Art.-Nr. 00254666.....	32
Control box exterior G 4 super / G 4 XL until 02.2022 part number 00254666.....	32
Schaltschrank außen G 4 super / G 4 XL ab 02.2022 Art.-Nr. 00254666.....	33
Control box exterior G 4 super / G 4 XL from 02.2022 part number 00254666	33
Schaltschrank außen G 4 super / G 4 XL Art.-Nr. 00254666.....	34

Control box exterior G 4 super / G 4 XL part number 00254666	34
Schaltschrank innen G 4 super / G 4 XL Art.-Nr. 00254666	35
Control box interior G 4 super / G 4 XL part number 00254666	35
Schalterblende komplett G 4 super / G 4 XL bis 02.2022 Art.-Nr. 00419416	36
Switch panel complete G 4 super / G 4 XL until 02.2022 part number 00419416	36
Schalterblende komplett G 4 super / G 4 XL ab 02.2022 Art.-Nr. 00419416	37
Switch panel complete G 4 super / G 4 XL from 02.2022 part number 00419416	37
Zubehör.....	38
Accessories	38

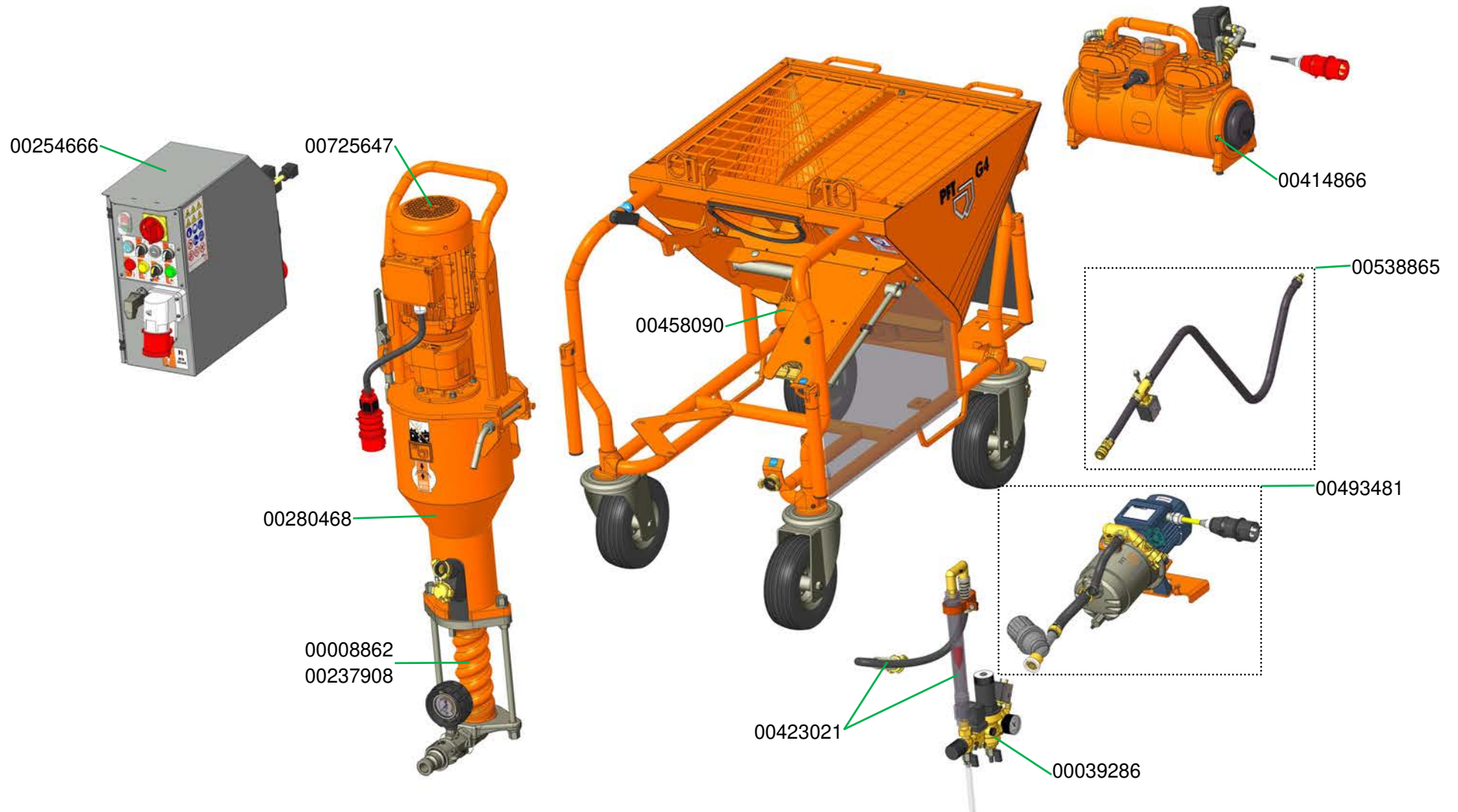
Übersicht G 4 XL, 400 V, 3 Ph, 50 Hz mit AV 1000 Art.-Nr. 00406795
Overview G 4 XL, 400 V, 3 Ph, 50 Hz with AV 1000 part number 00406795



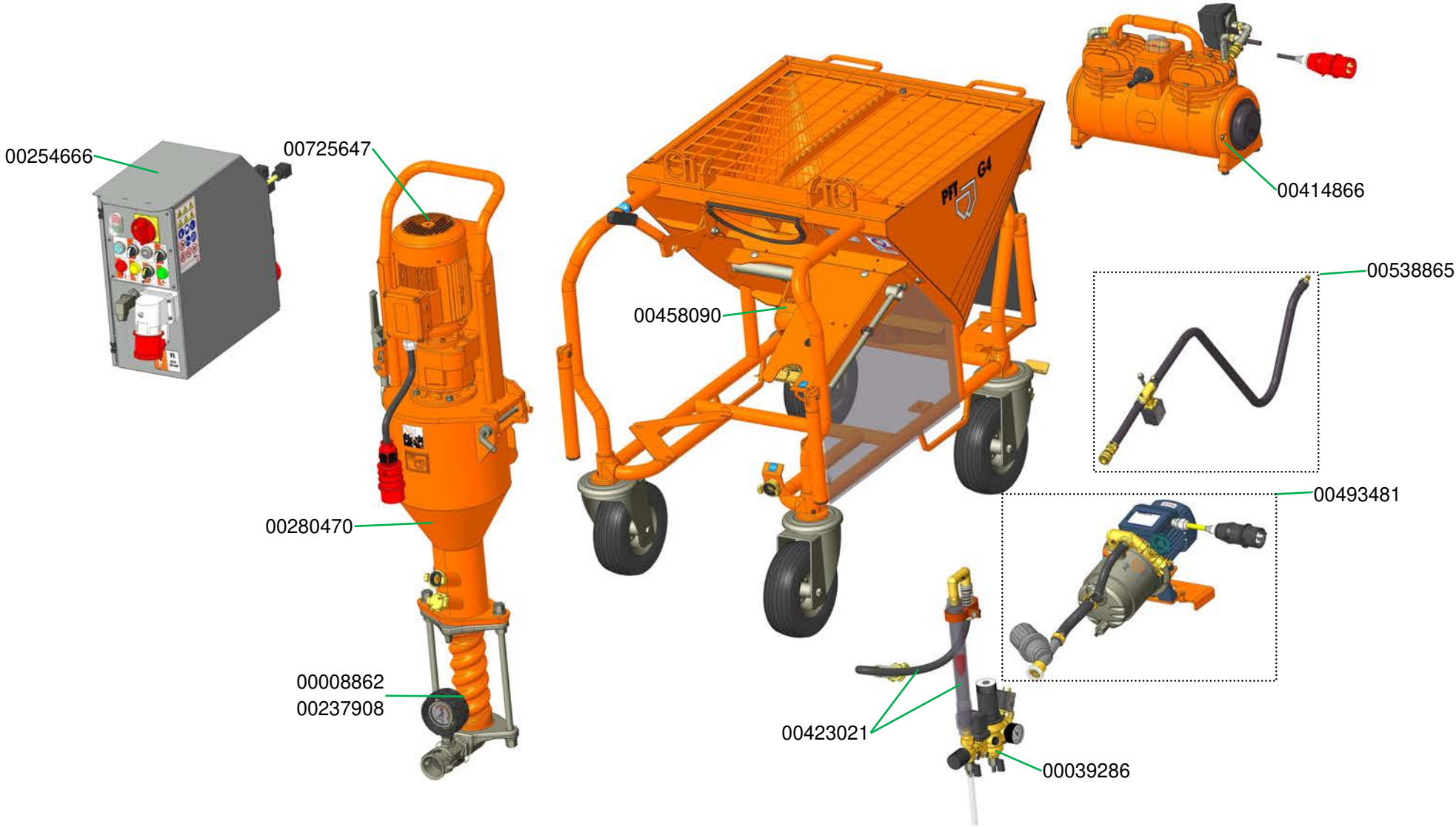
Übersicht G 4 super, 400 V, 3 Ph, 50 Hz mit AV 1000 Art.-Nr. 00414171
Overview G 4 super, 400 V, 3 Ph, 50 Hz with AV 1000 part number 00414171



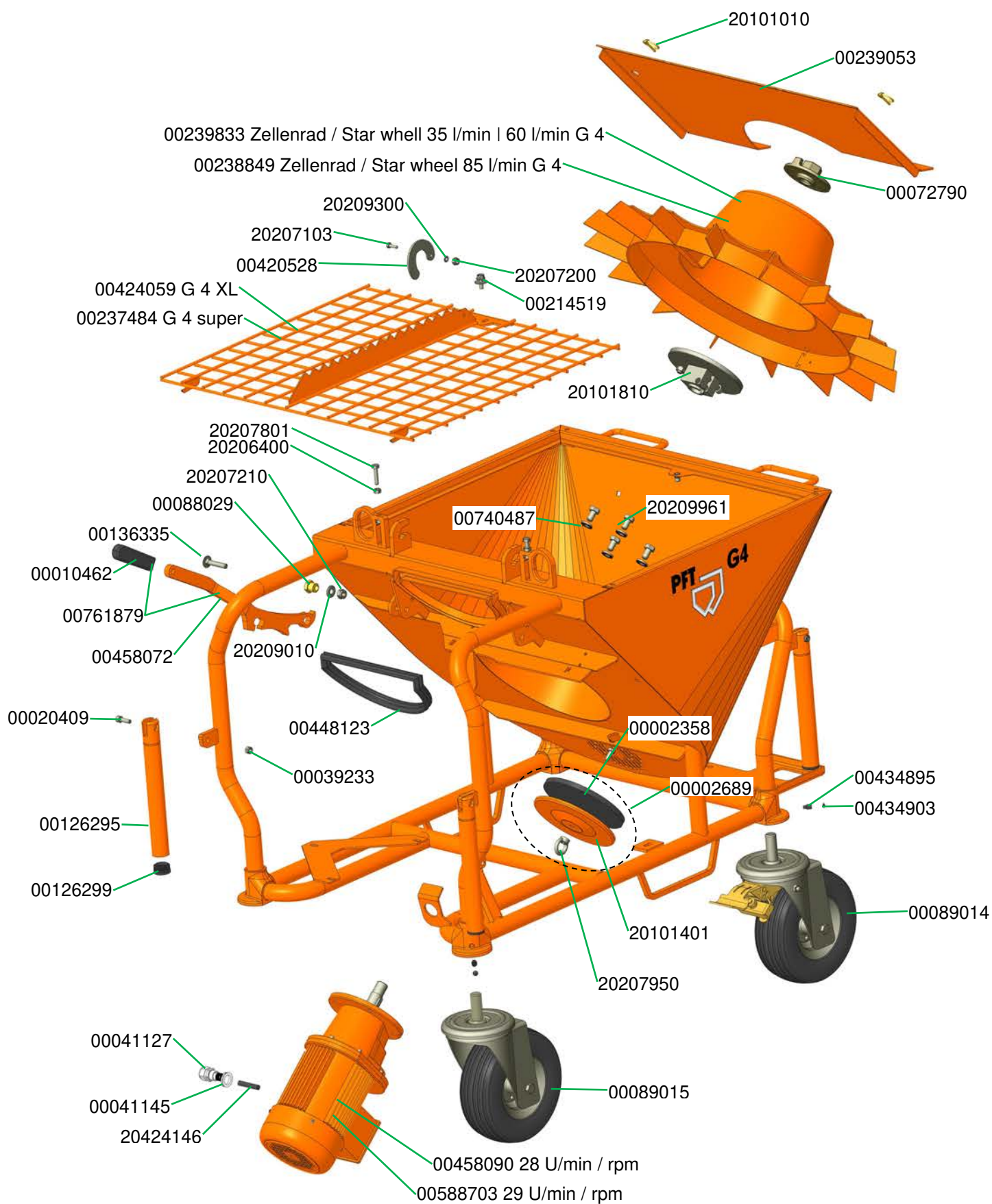
Übersicht G 4 super, 400 V, 3 Ph, 50 Hz mit AV 1000 Feinputzgerät DN25-360° S14 600-30° Geka und Zubehör Art.-Nr. 00423947
Overview G 4 super, 400 V, 3 Ph, 50 Hz with AV 1000 Spraying gun DN25-360° S14 600-30° Geka and accessories part number 00423947



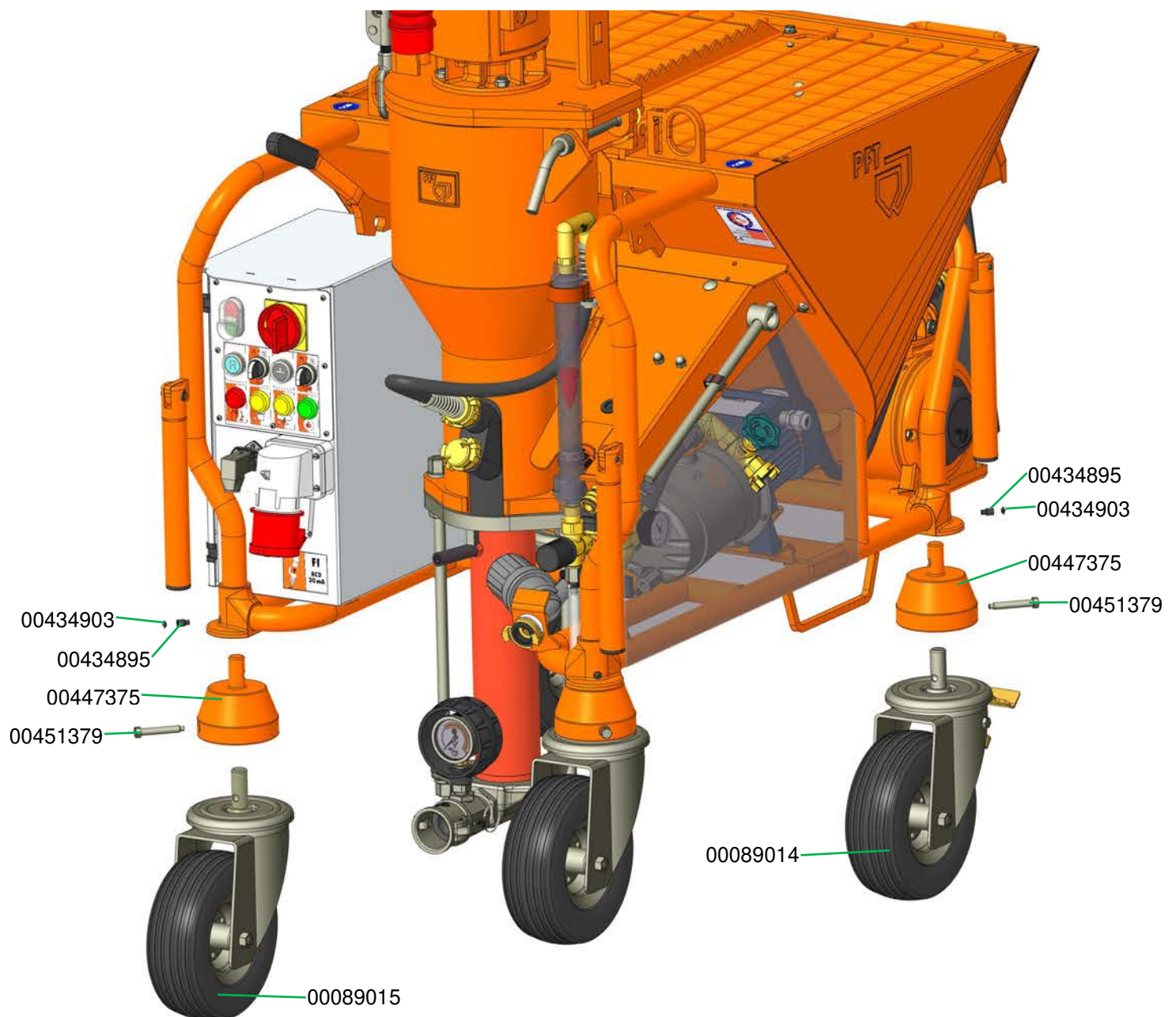
Übersicht G 4 super Gima Edition Art.-Nr. 00788682
Overview G 4 super Gima Edition part number 00788682



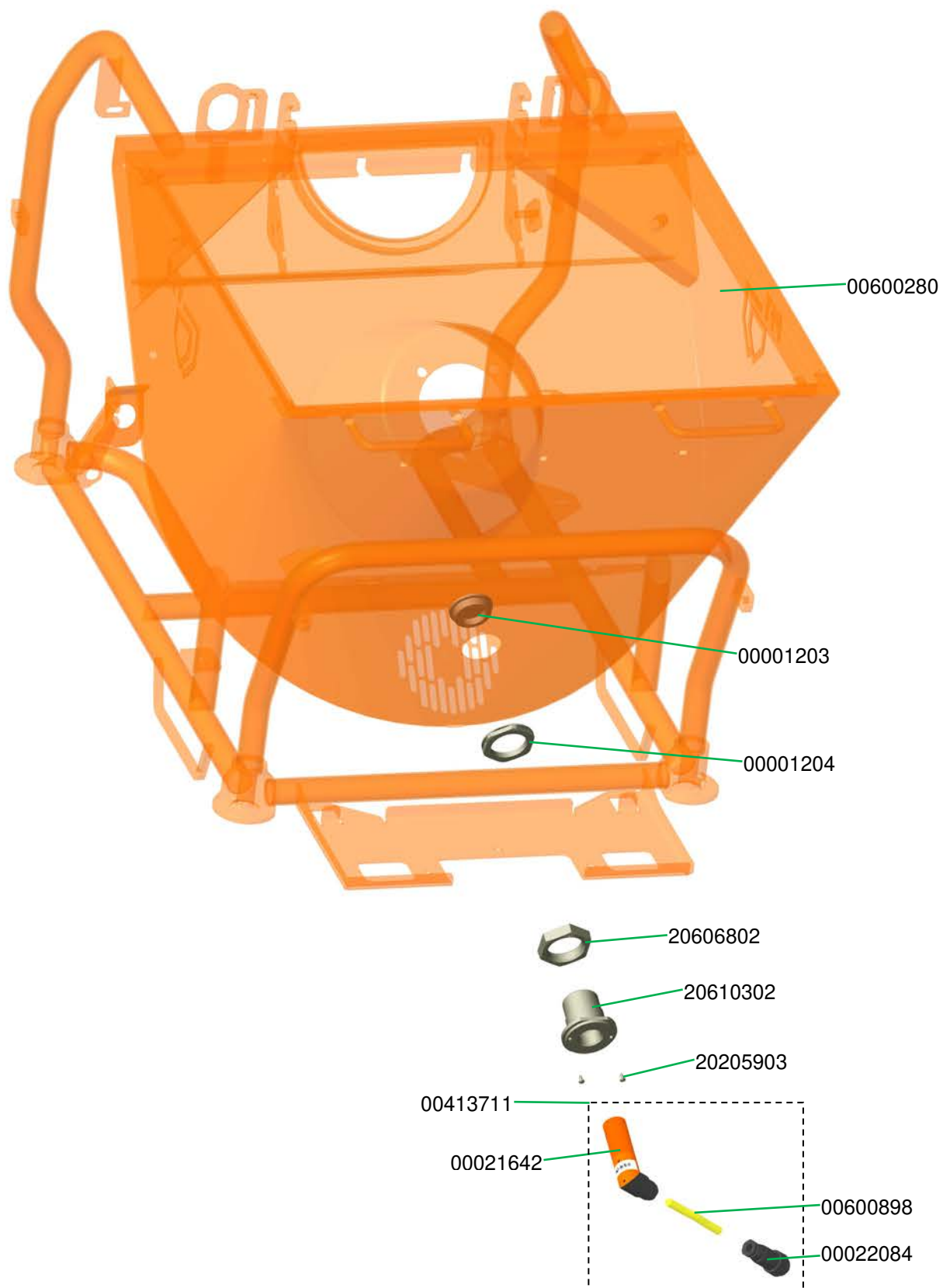
Fahrgestell G 4 Chassis G 4

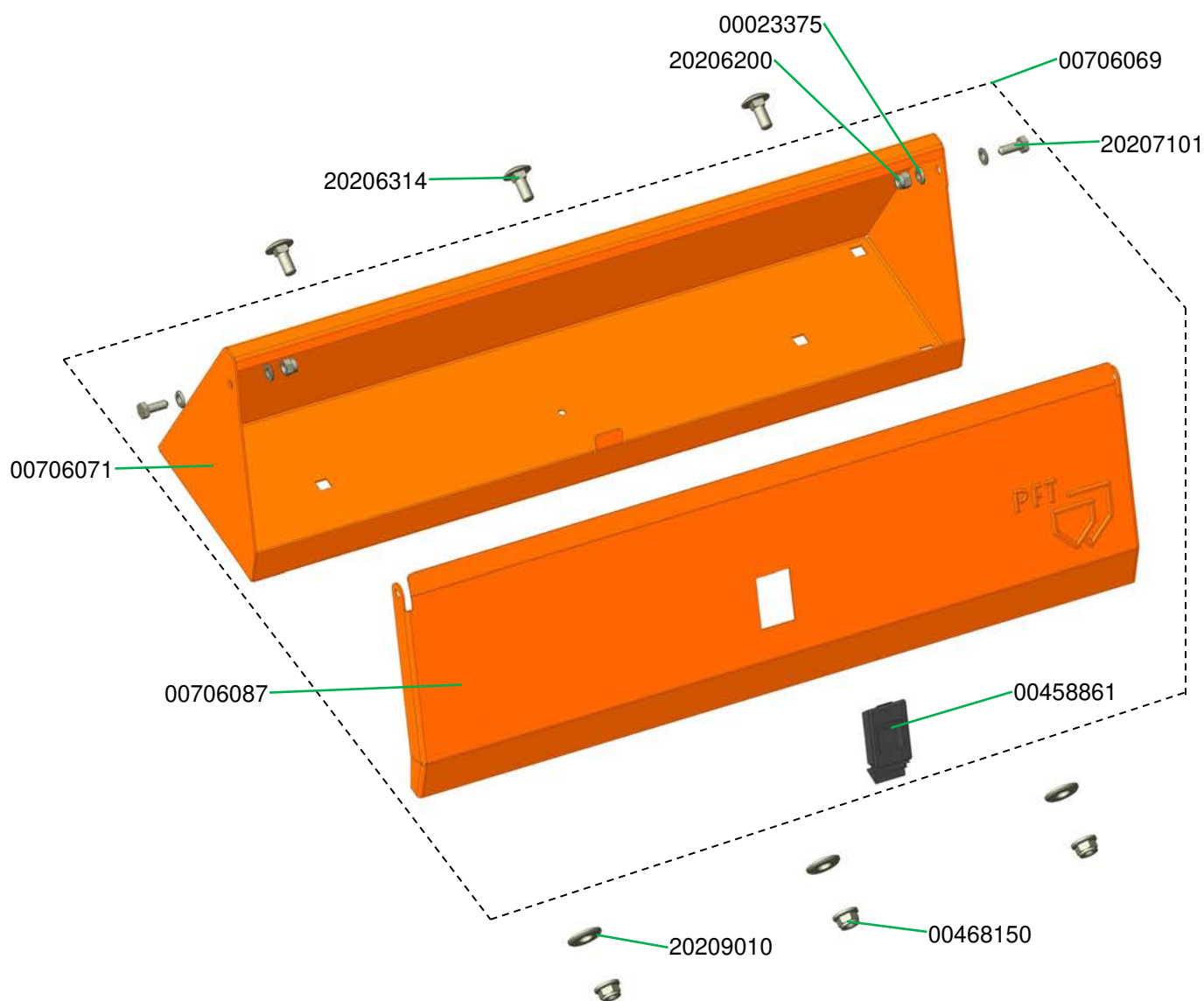


Lenkrollen 230 mm G 4 XL
Castor 230 mm steel rim G 4 XL

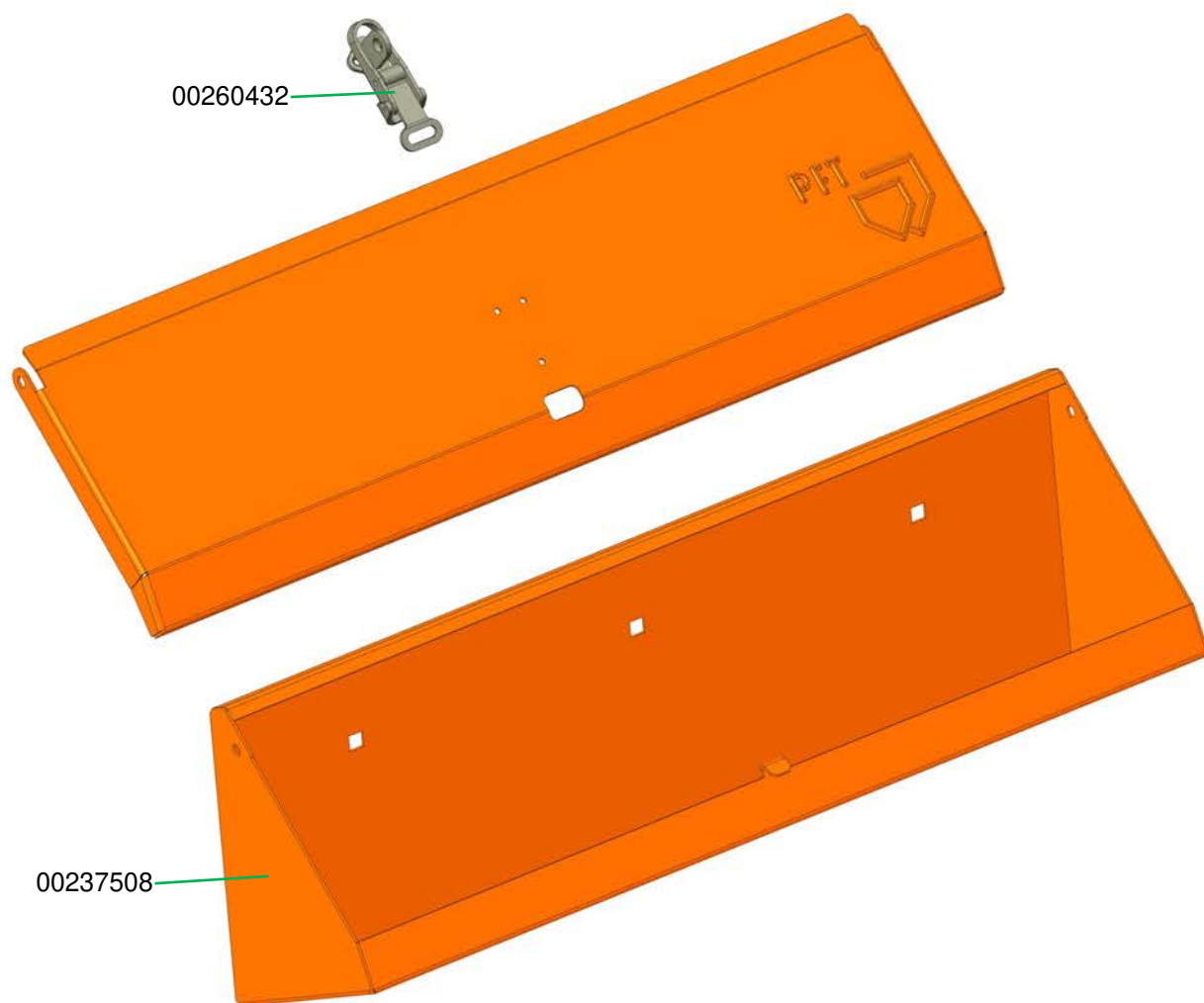


Materialbehälter G 4 für Sonde mit Rohrrahmen
Material hopper G 4 for probe with tubular frame

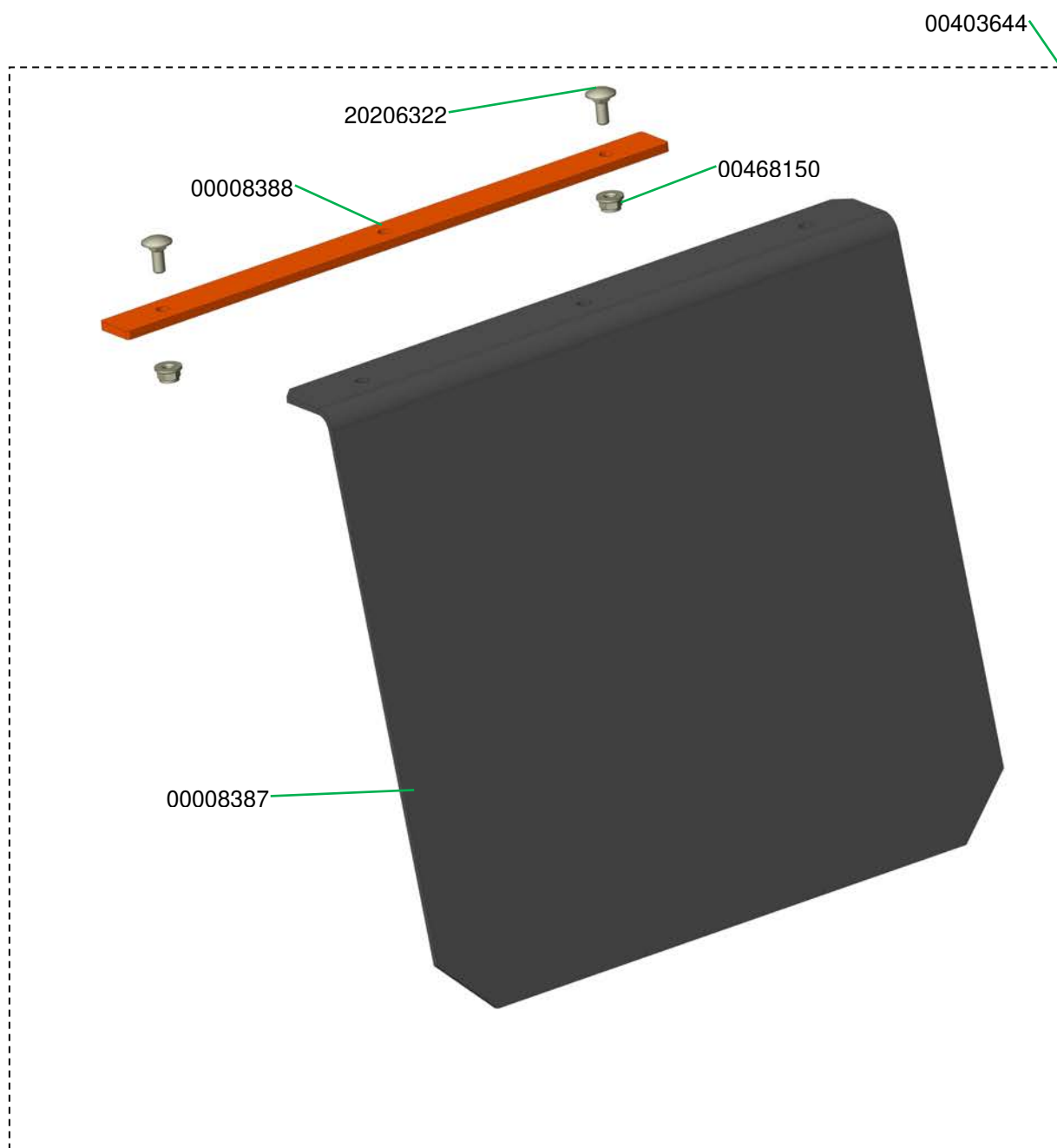




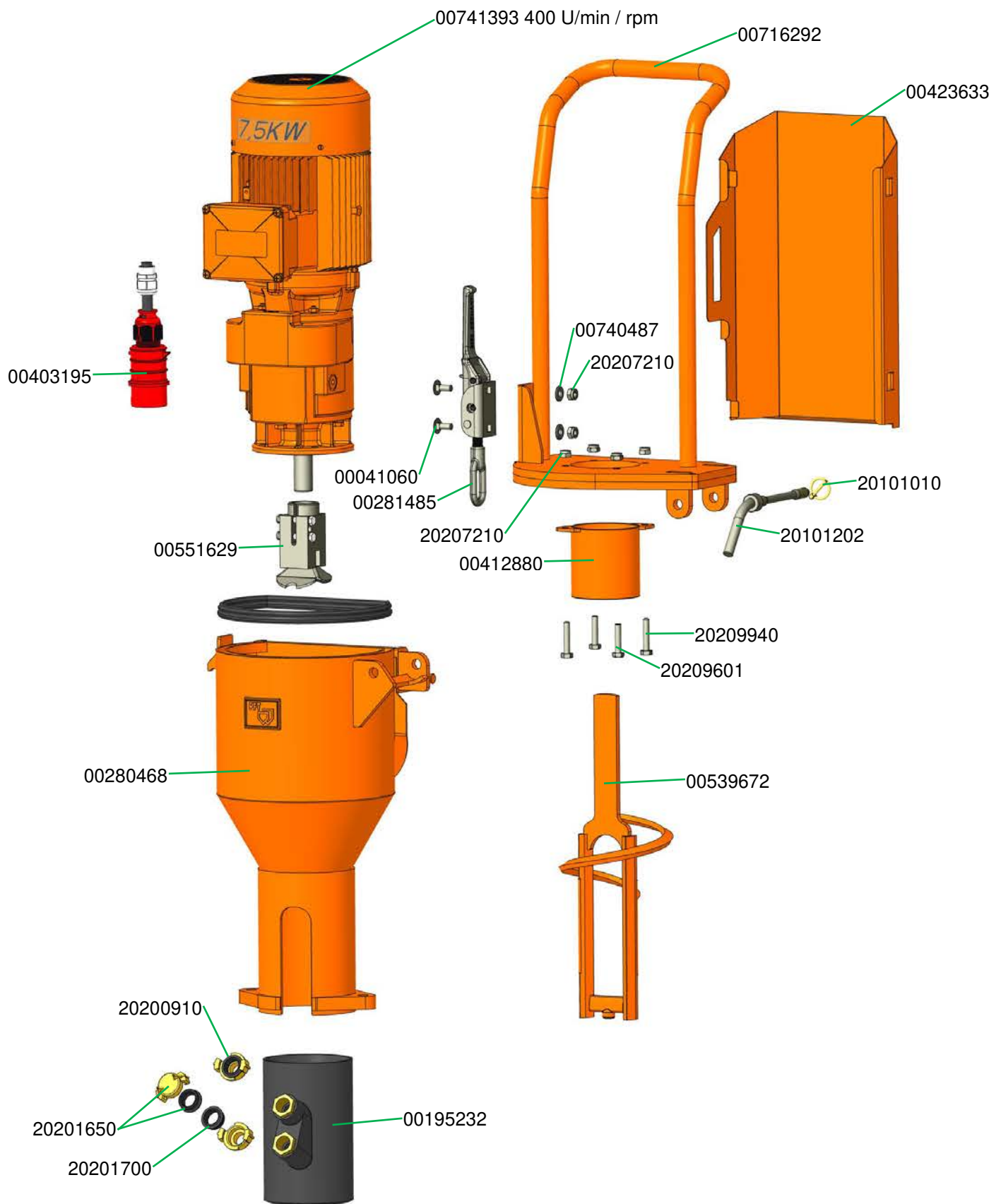
Gehäuse Werkzeugkasten G 4 für Art.-Nr. 00237505
Housing for tool box G 4 for part number 00237505



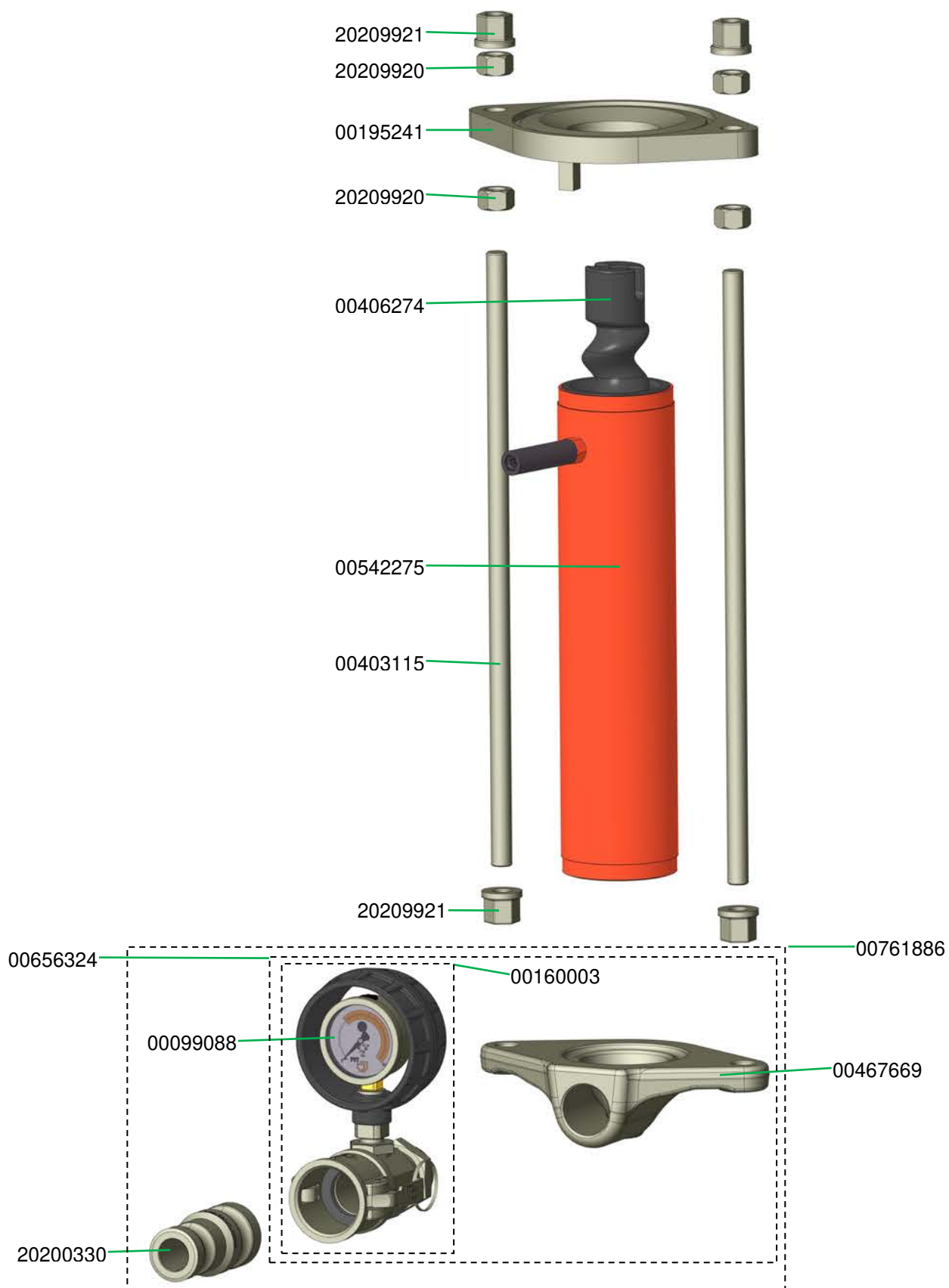
Staubschürze für Kompressor G 4
Dust guard for compressor G 4



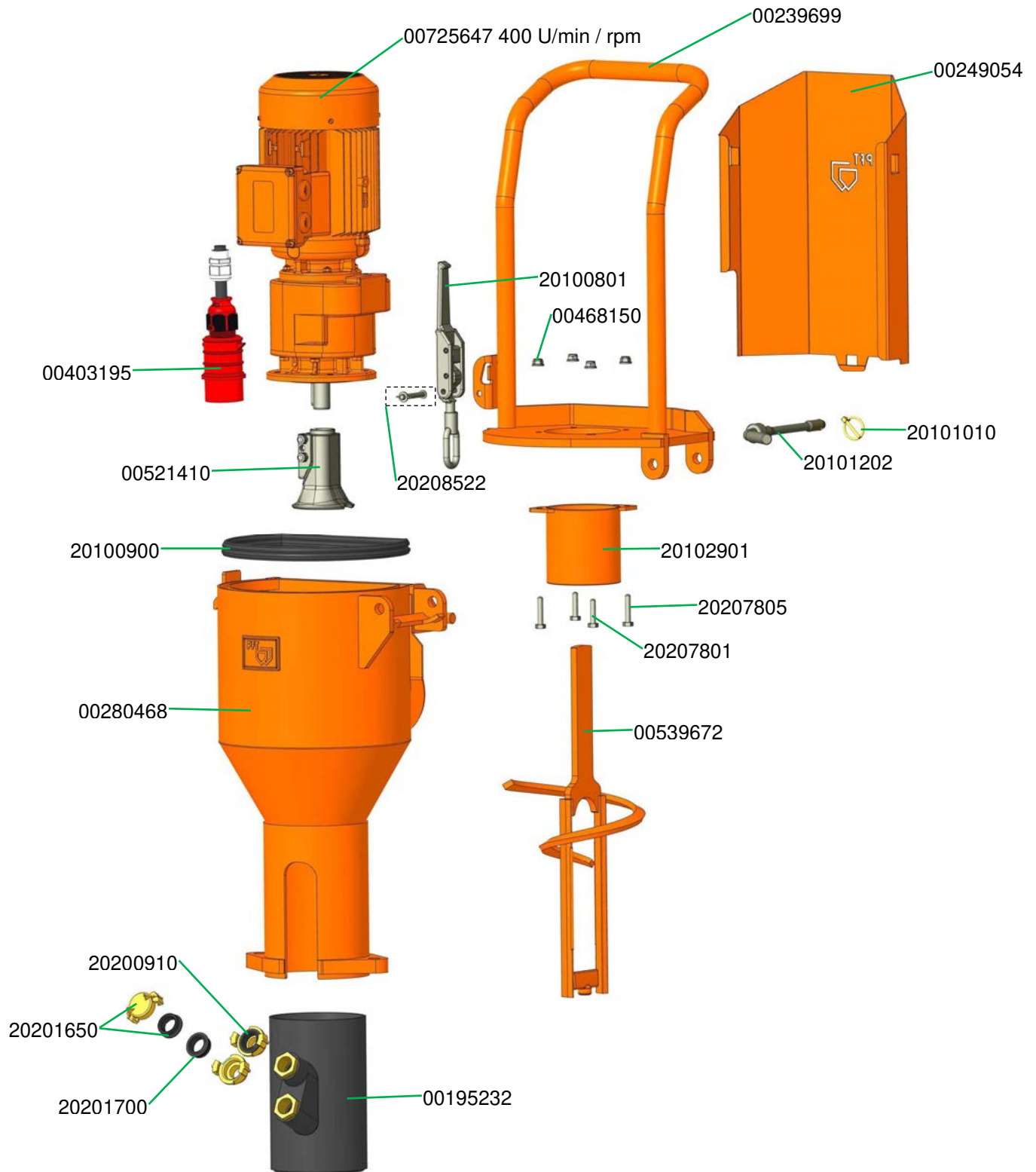
Gummimischrohr G 4 XL
Rubber mixing tube G 4 XL



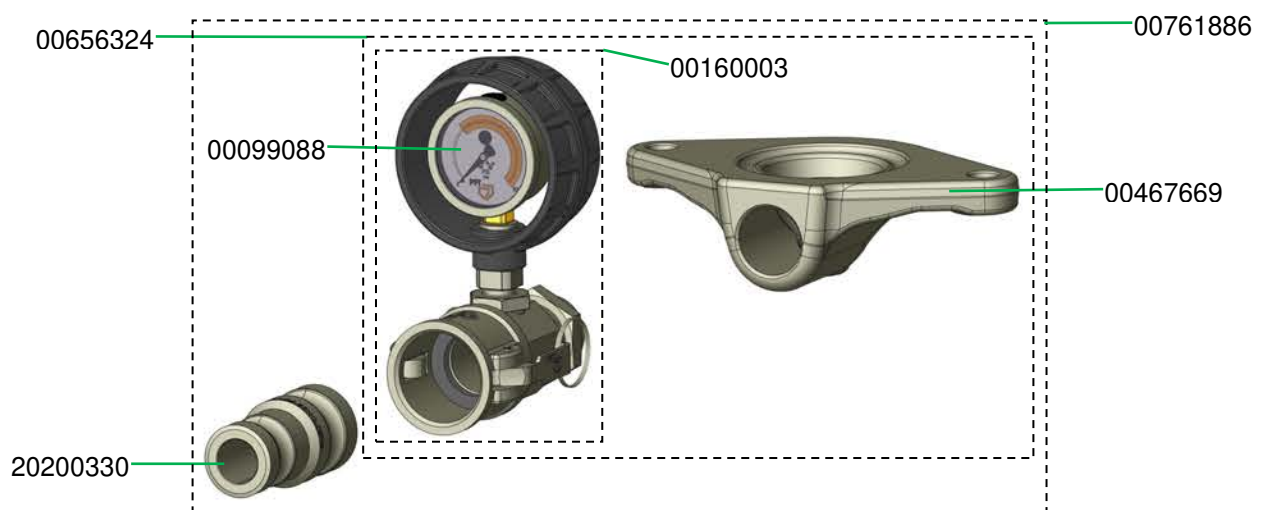
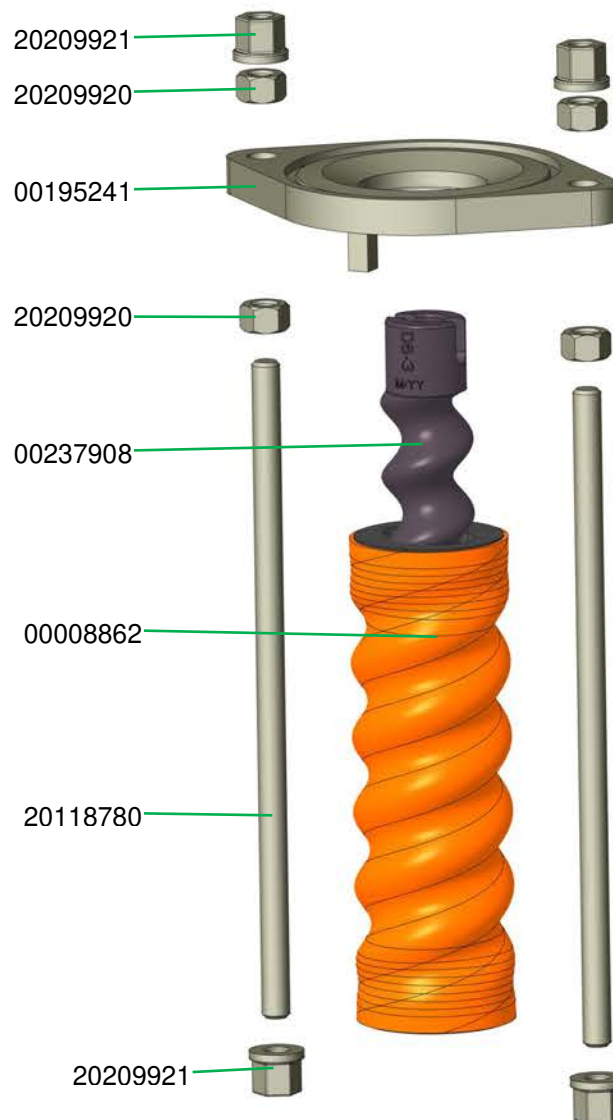
Pumpeneinheit Rotor Stator D6-4 PIN WF
 Pump unit Rotor Stator D6-4 PIN WF



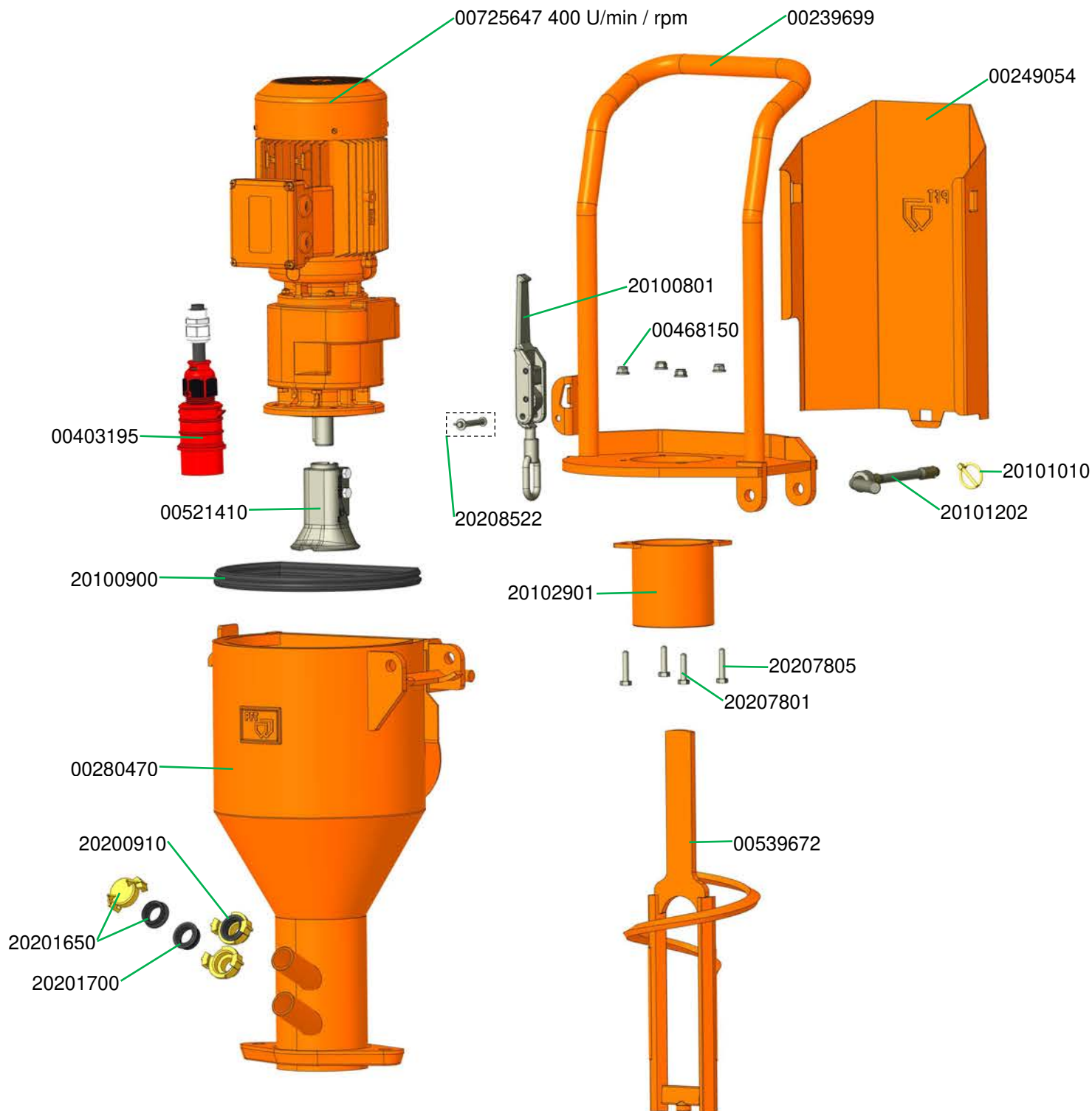
Gummimischrohr G 4 super
Rubber mixing tube G 4 super

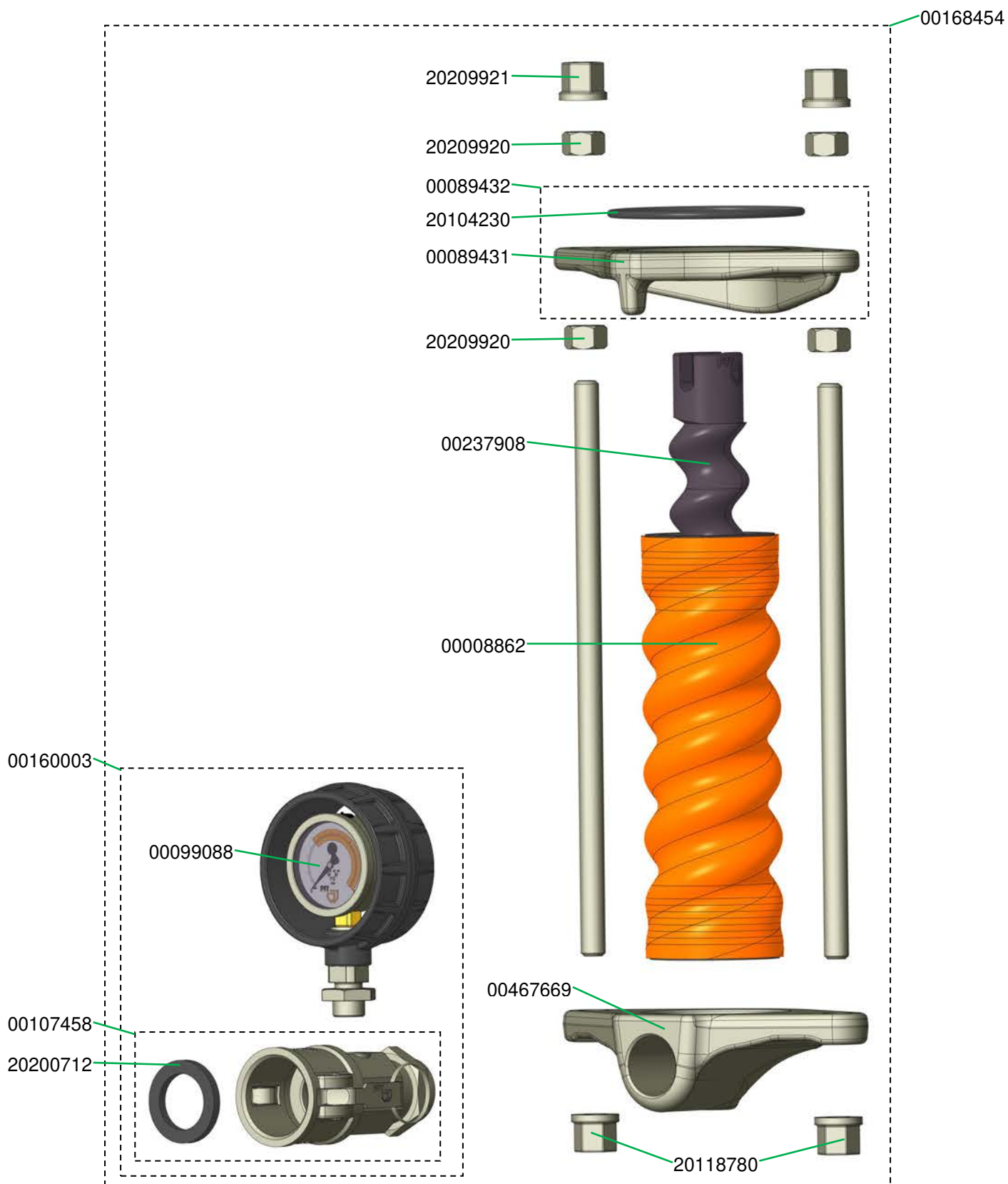


Pumpeneinheit Rotor Stator D6-3
 Pump unit Rotor Stator D6-3

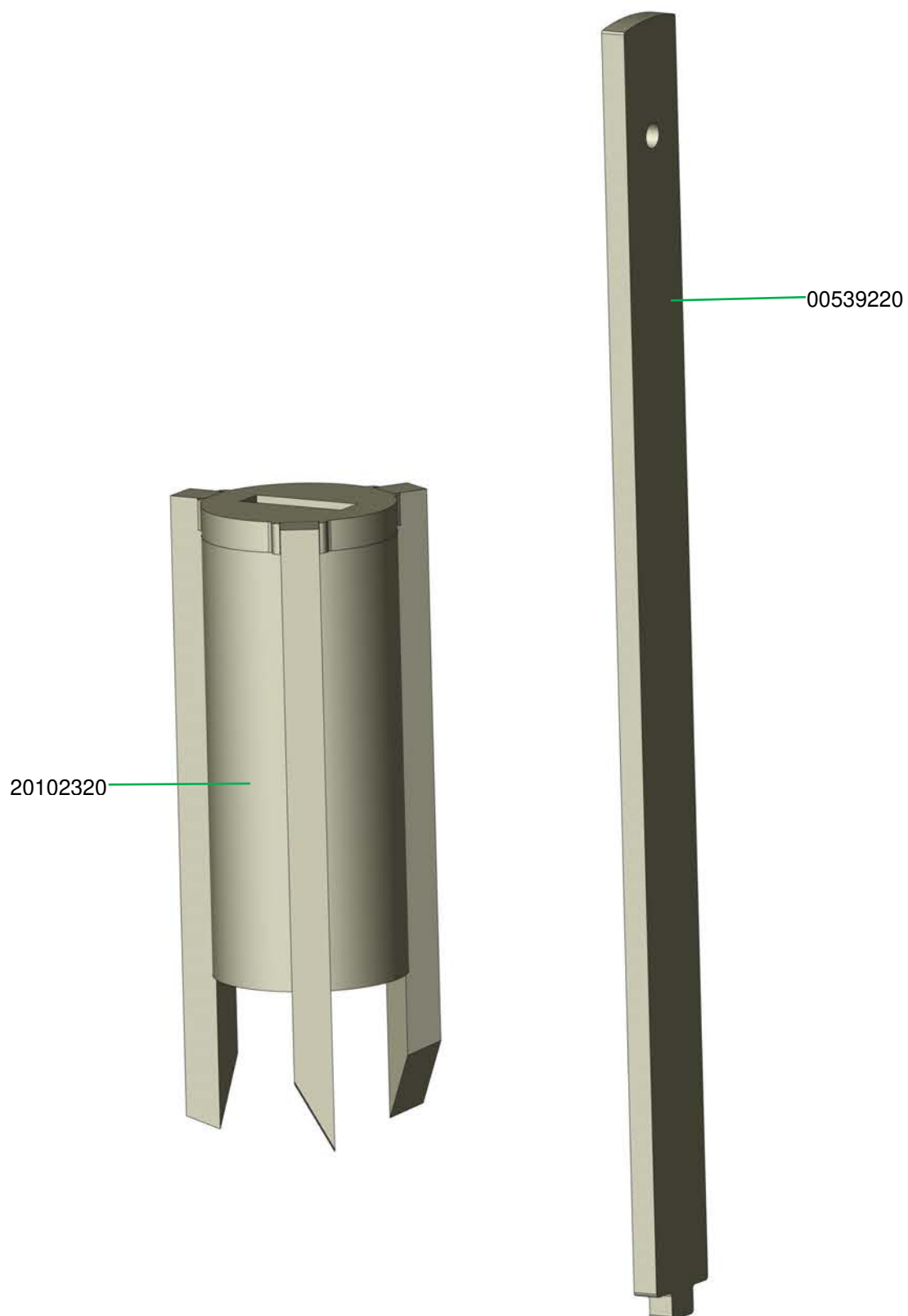


Mischrohr G 4 mit Wechselflansch
Mixing tube G 4 with adaptable flange

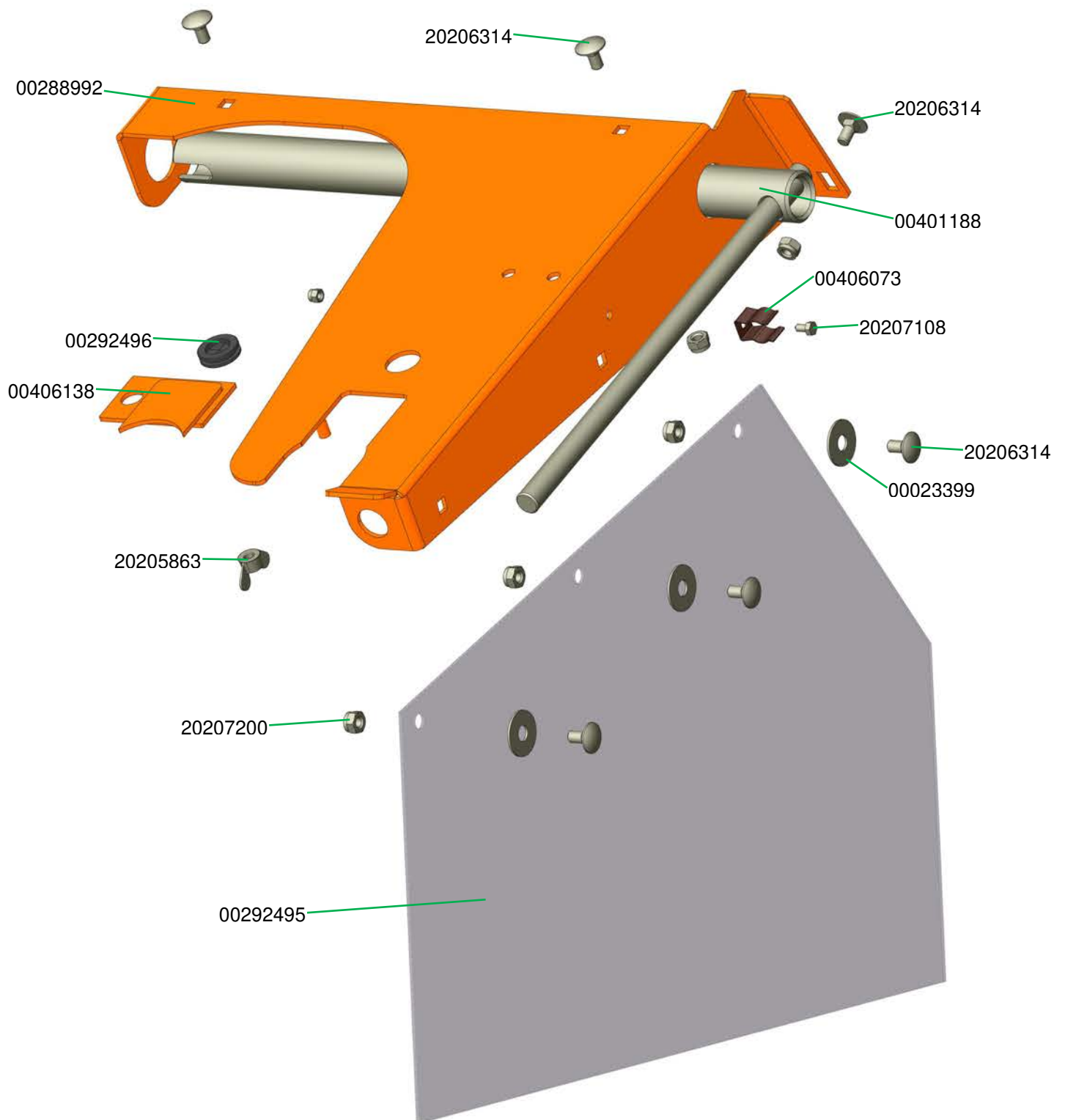




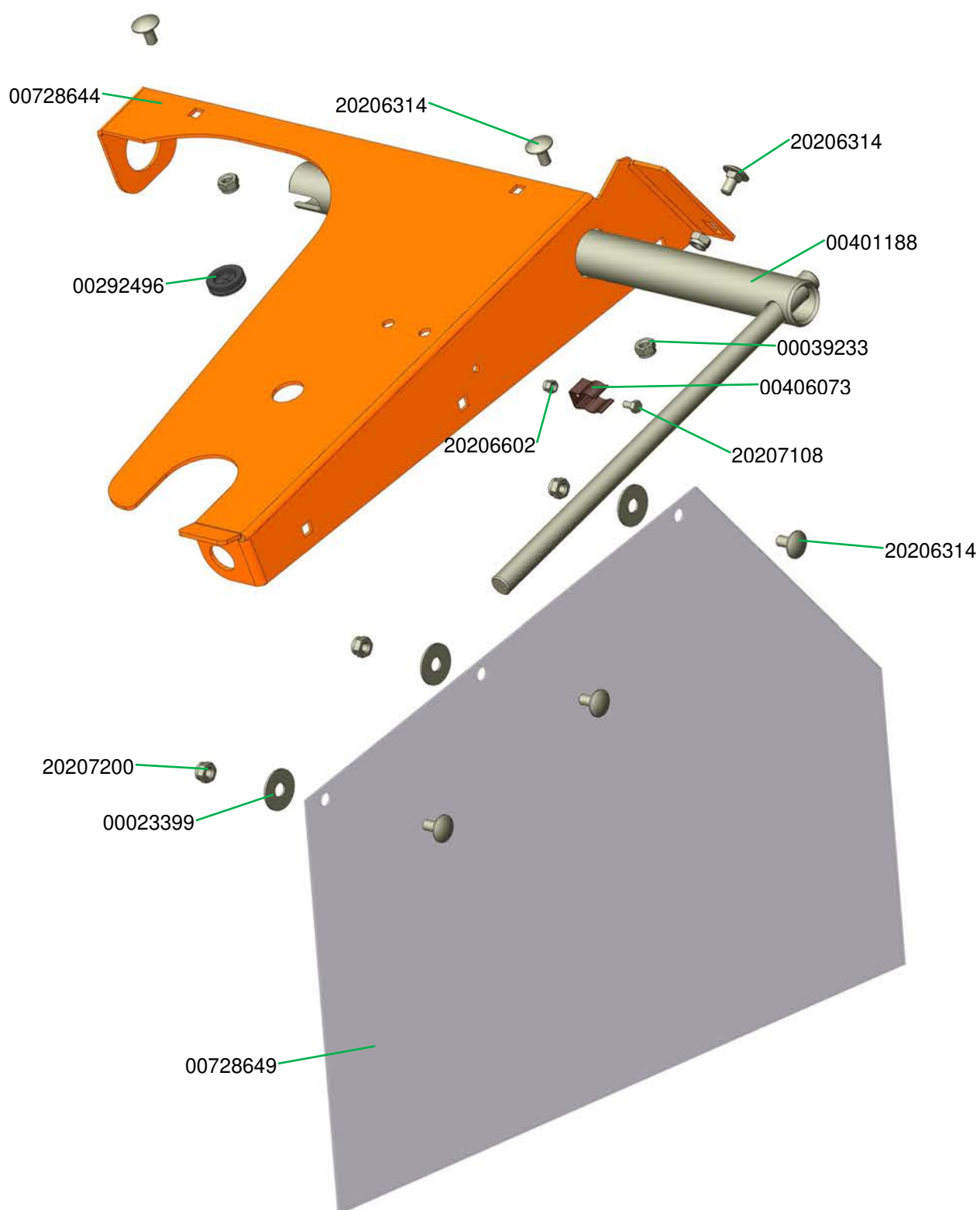
Reinigerwelle BIONIK G 4 verzinkt und Mischrohrreiniger D- und R-Pumpen
Cleaning shaft BIONIK G 4, galvanised and Mixing tube cleaner for D- and R-pumps



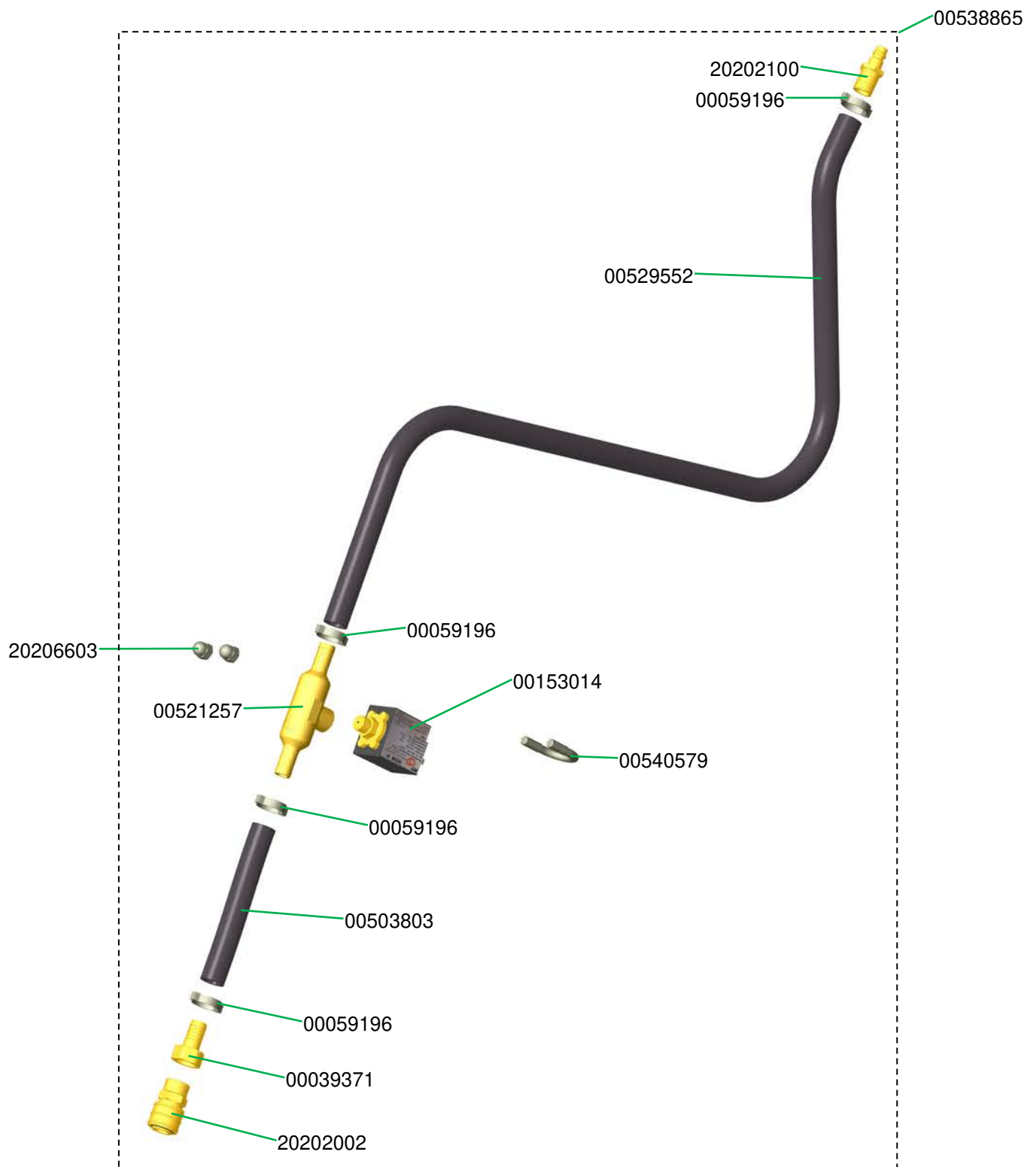
Abdeckung Wasser-Luft-Armatur G 4 bis 03.2021
Cover for water-/ air manifold G 4 until 03.2021



Abdeckung Wasser-Luft-Armatur G 4 **ab 04.2021**
Cover for water-/ air manifold G 4 **from 04.2021**

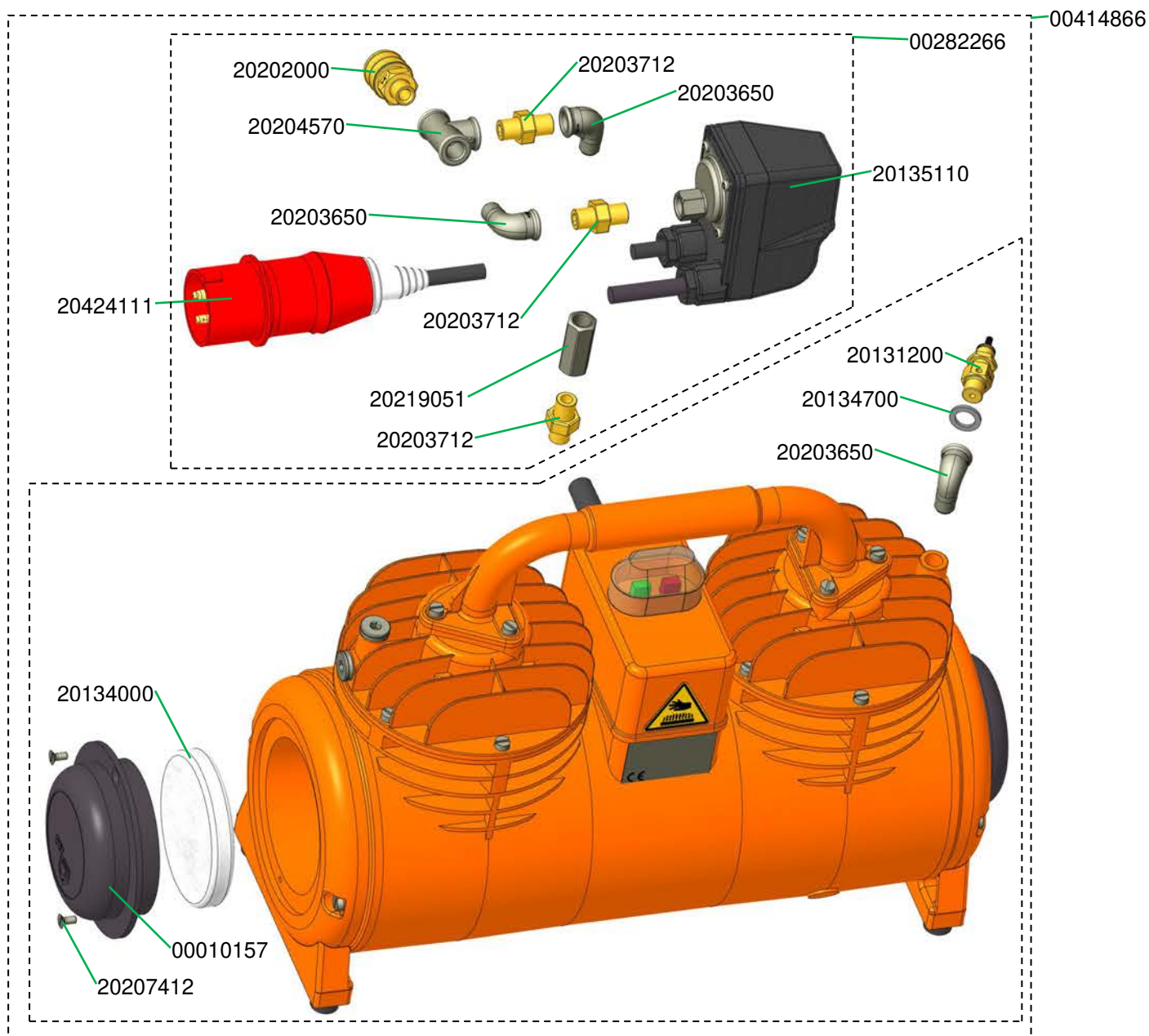


Luftarmatur G 4 Art.-Nr. 00538865
Air manifold G 4 part number 00538865

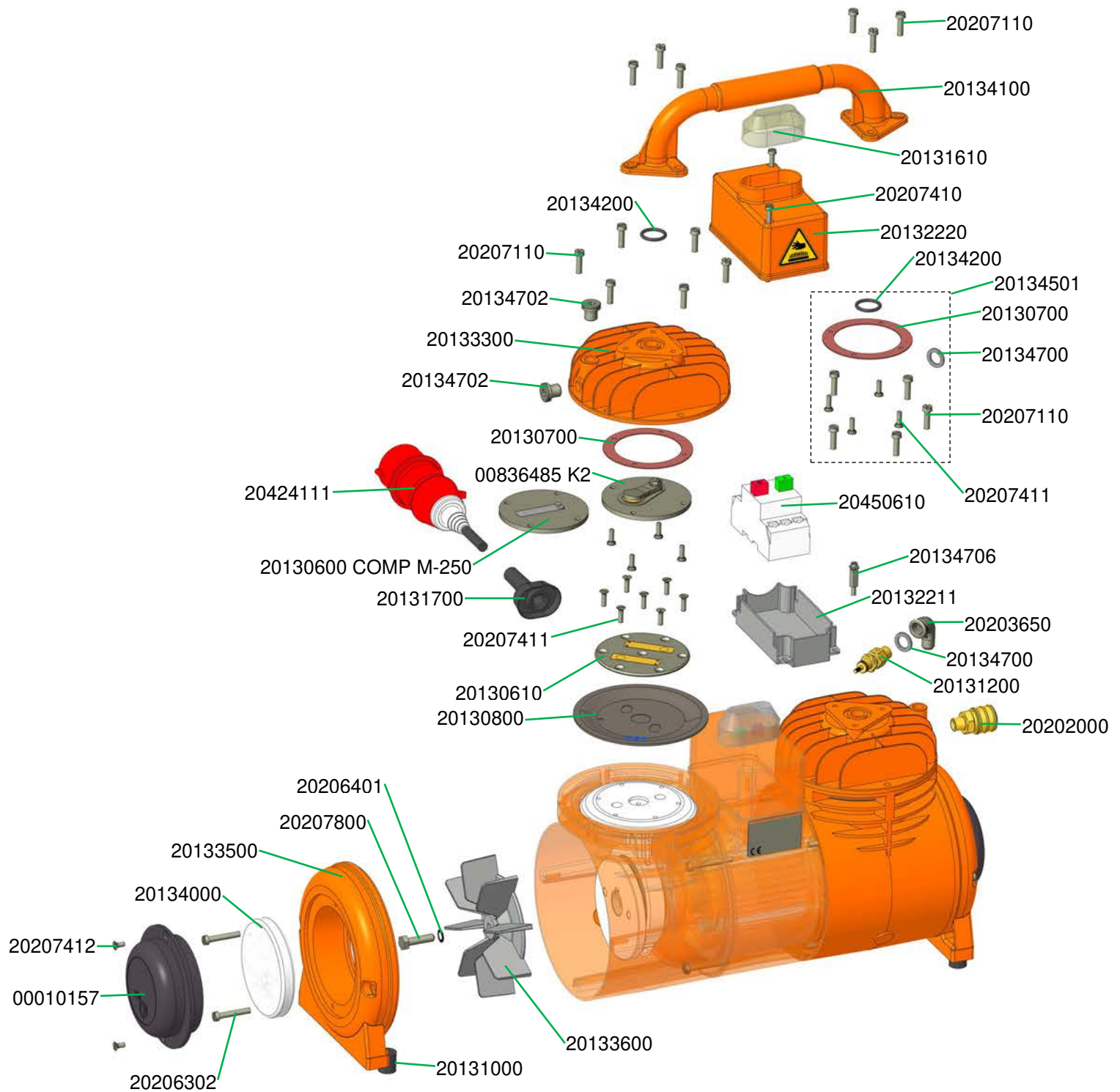


Luftkompressor COMP M-250, 400 V, 3 Ph, 50 Hz mit Drucksteuerung für G 4 (ab 2013) Art.-Nr. 00414866

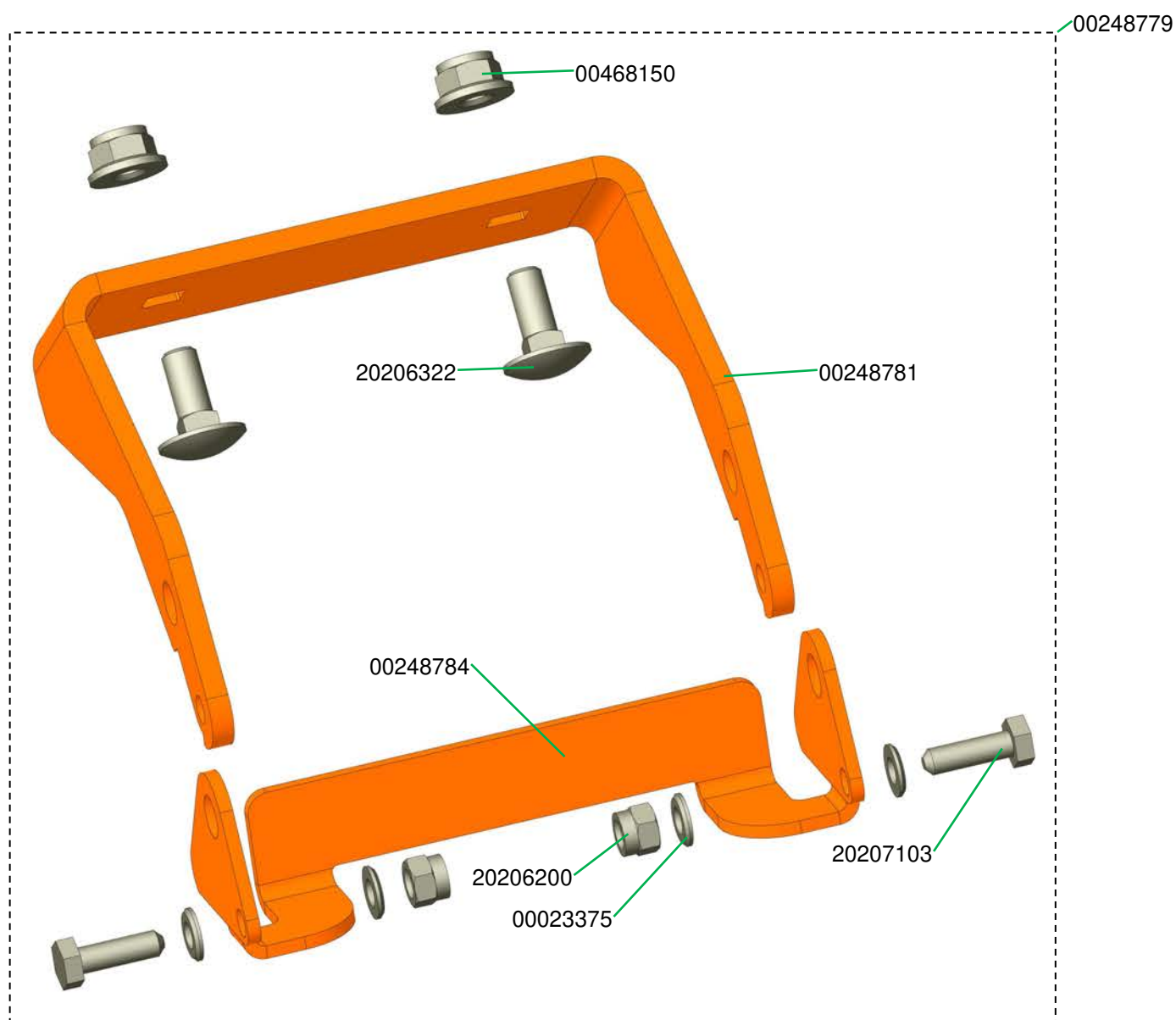
Air compressor COMP M-250, 400 V, 3 Ph, 50 Hz with pressure control for G 4 (from 2013) part number 00414866



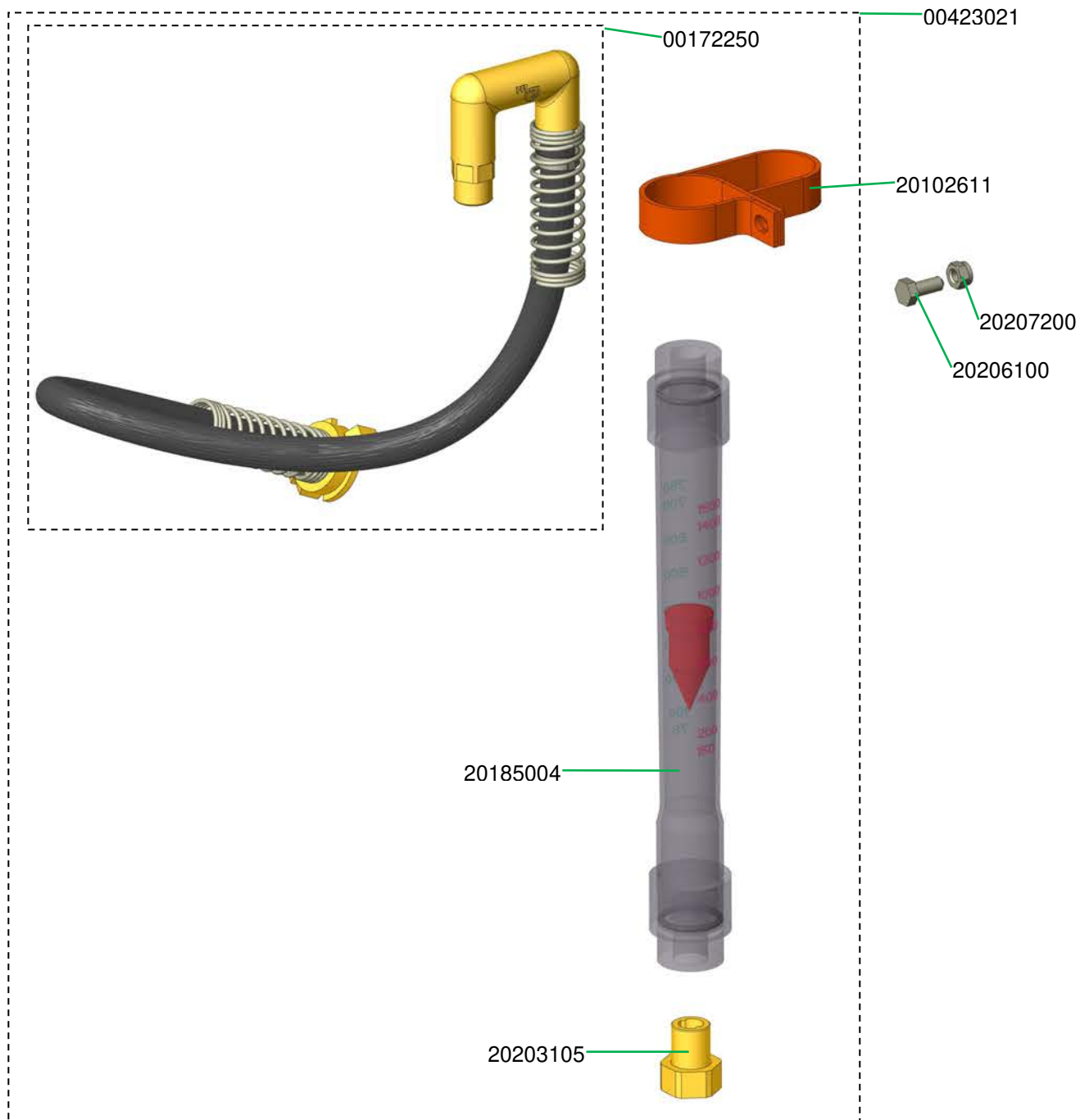
Luftkompressor COMP M-250 Ersatzteile
Air compressor COMP M-250 spare parts



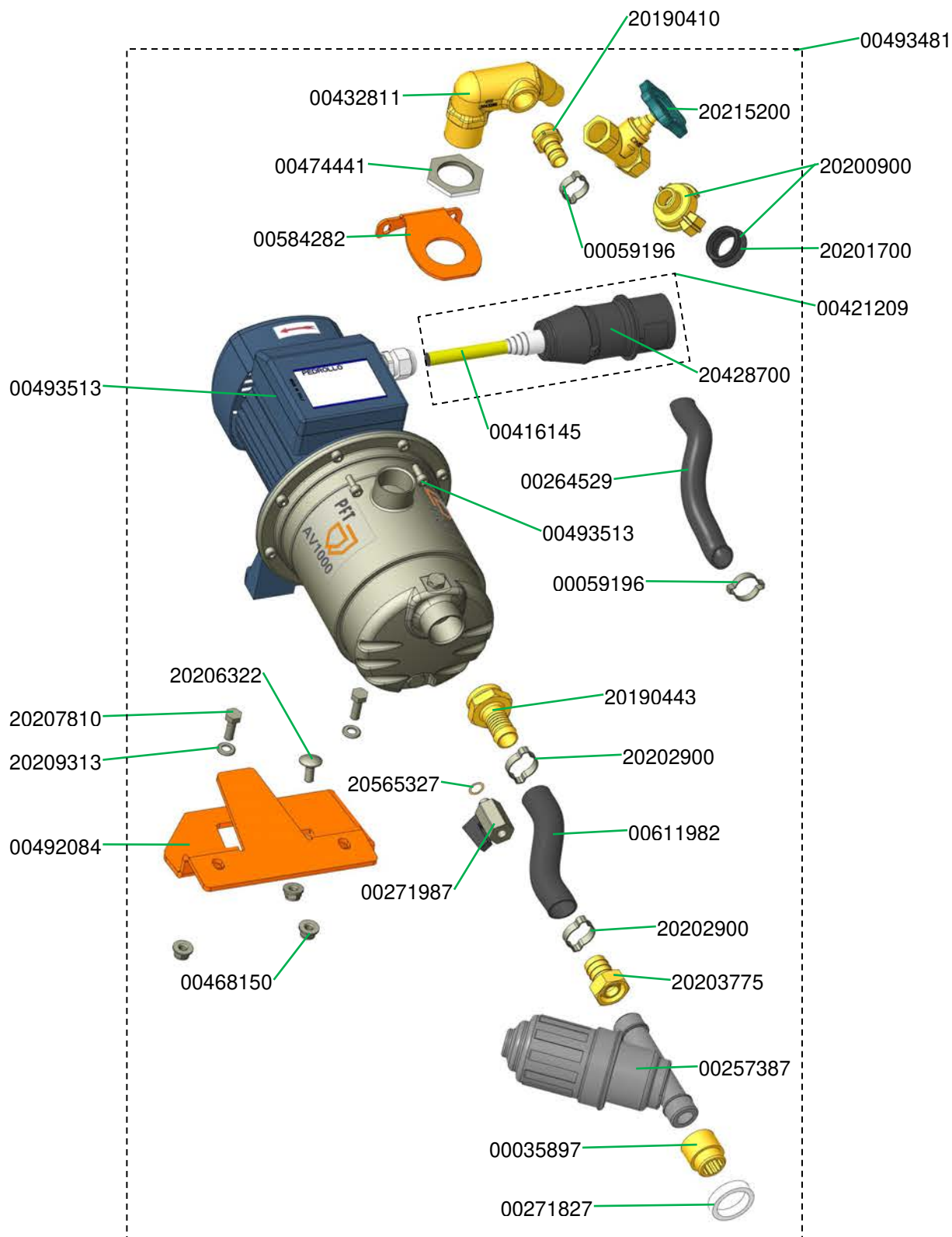
Halterung Kompressor COMP M-250 Handy für G 4 Art.-Nr. 00248779
Support compressor COMP M-250 Handy for G 4 part number 00248779



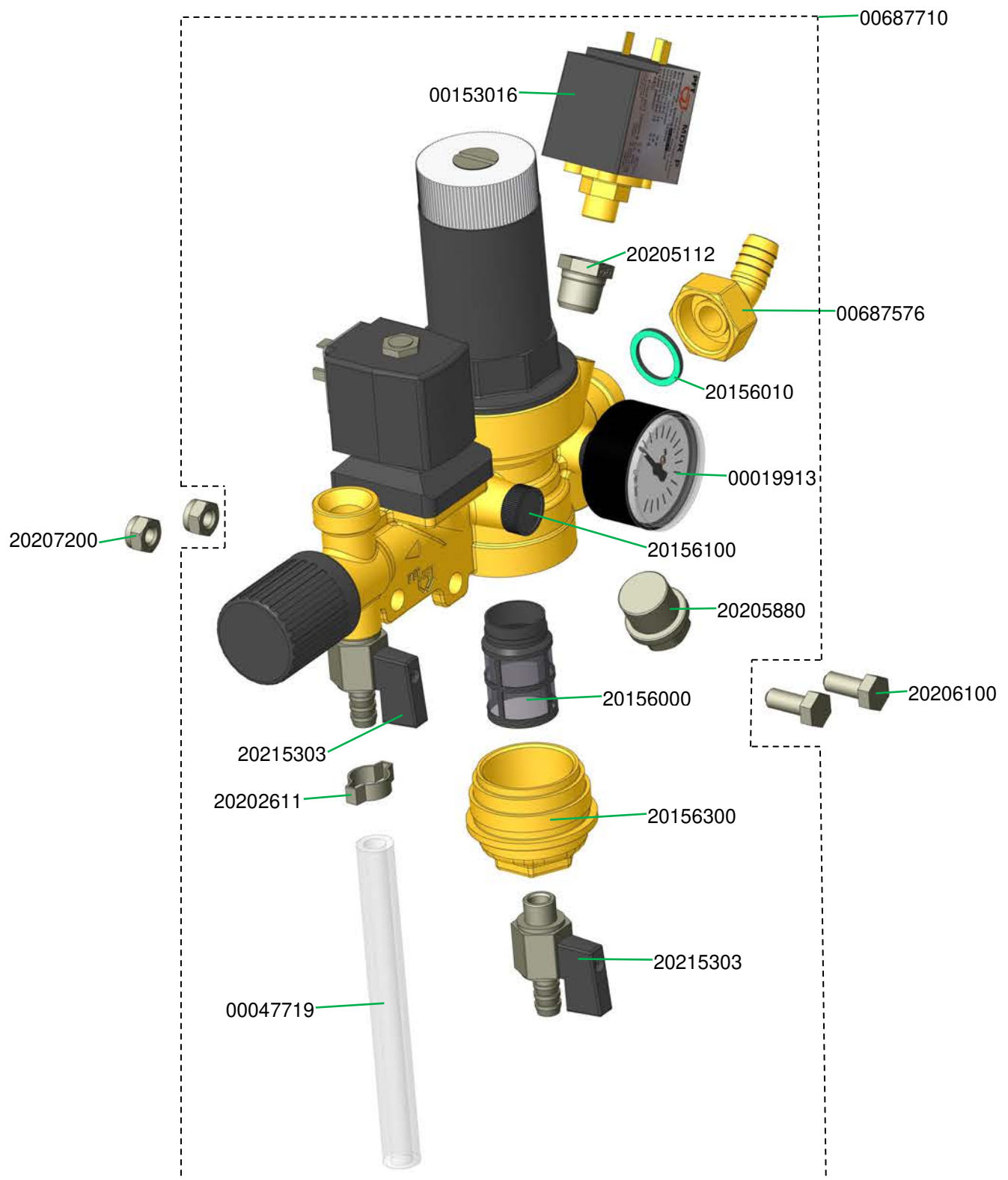
Wasseranschluss G 4 mit Durchflussmesser 150 - 1.500 l/h Art.-Nr. 00423021
Water connection G 4 with water flow meter 150 - 1,500 l/h part number 00423021

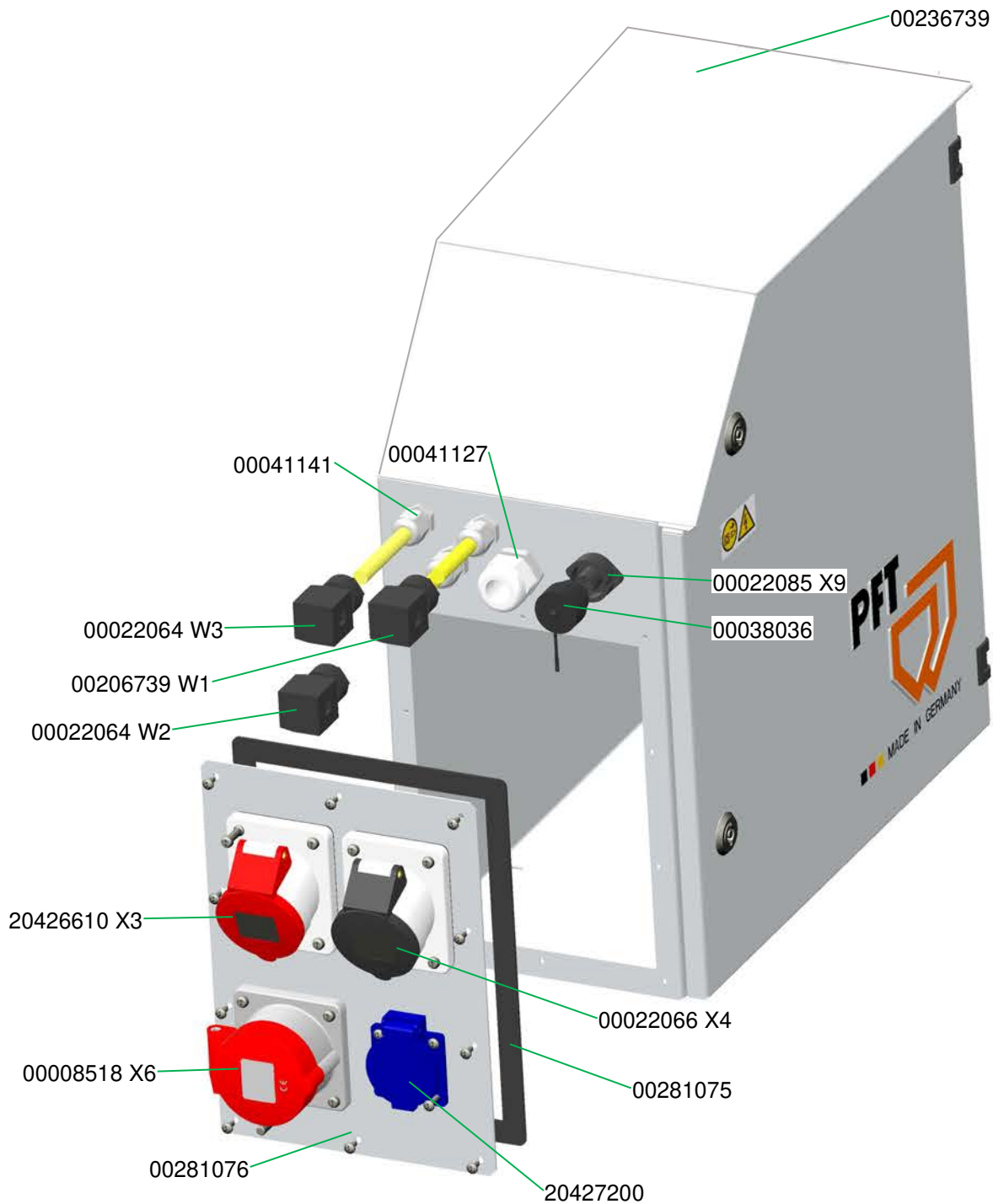


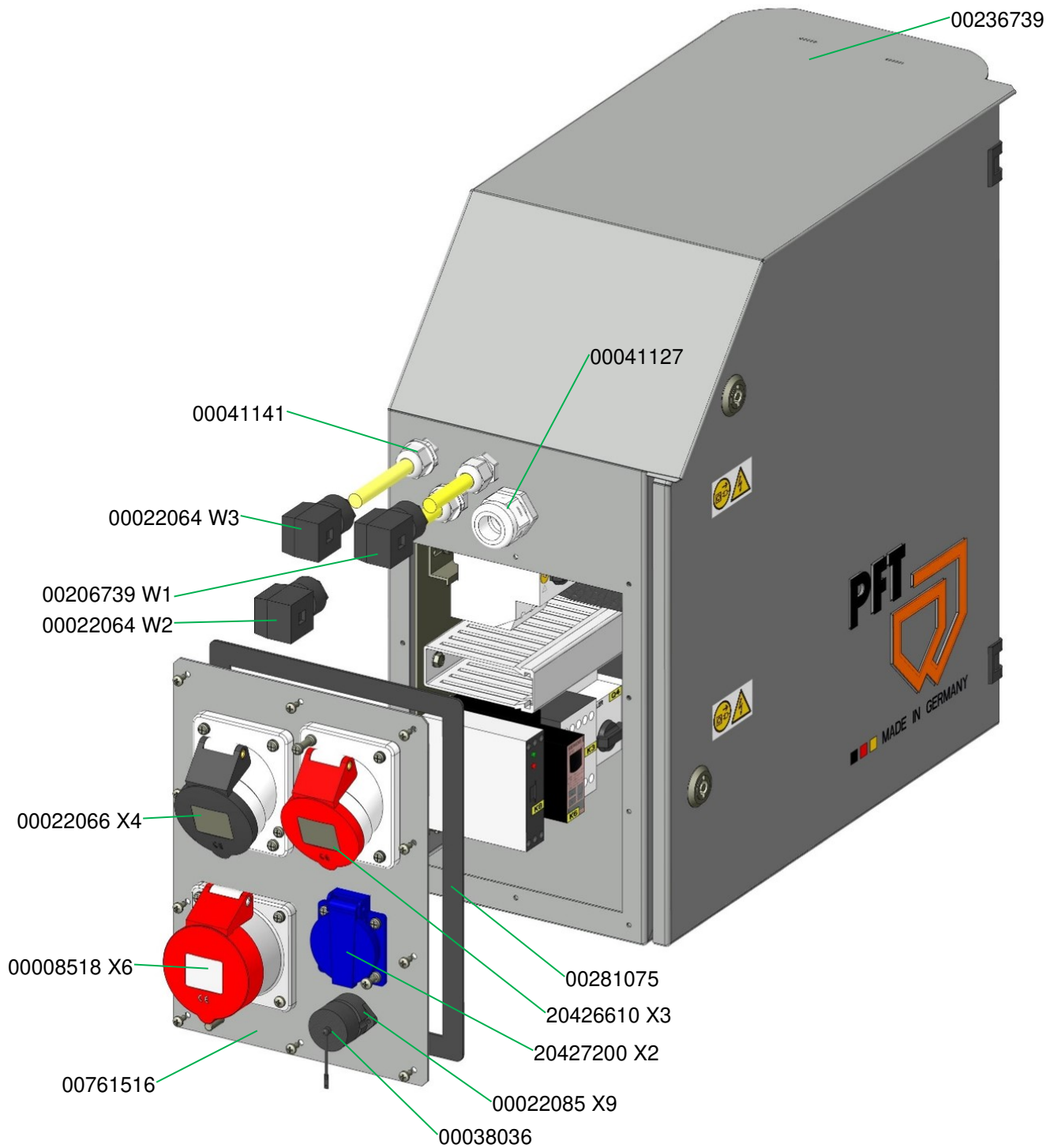
Druckerhöhungspumpe AV1000/1 400V G 4 kpl Art.-Nr. 00493481
 Water pressure booster pump AV1000/1 400V G 4 cpl part number 00493481



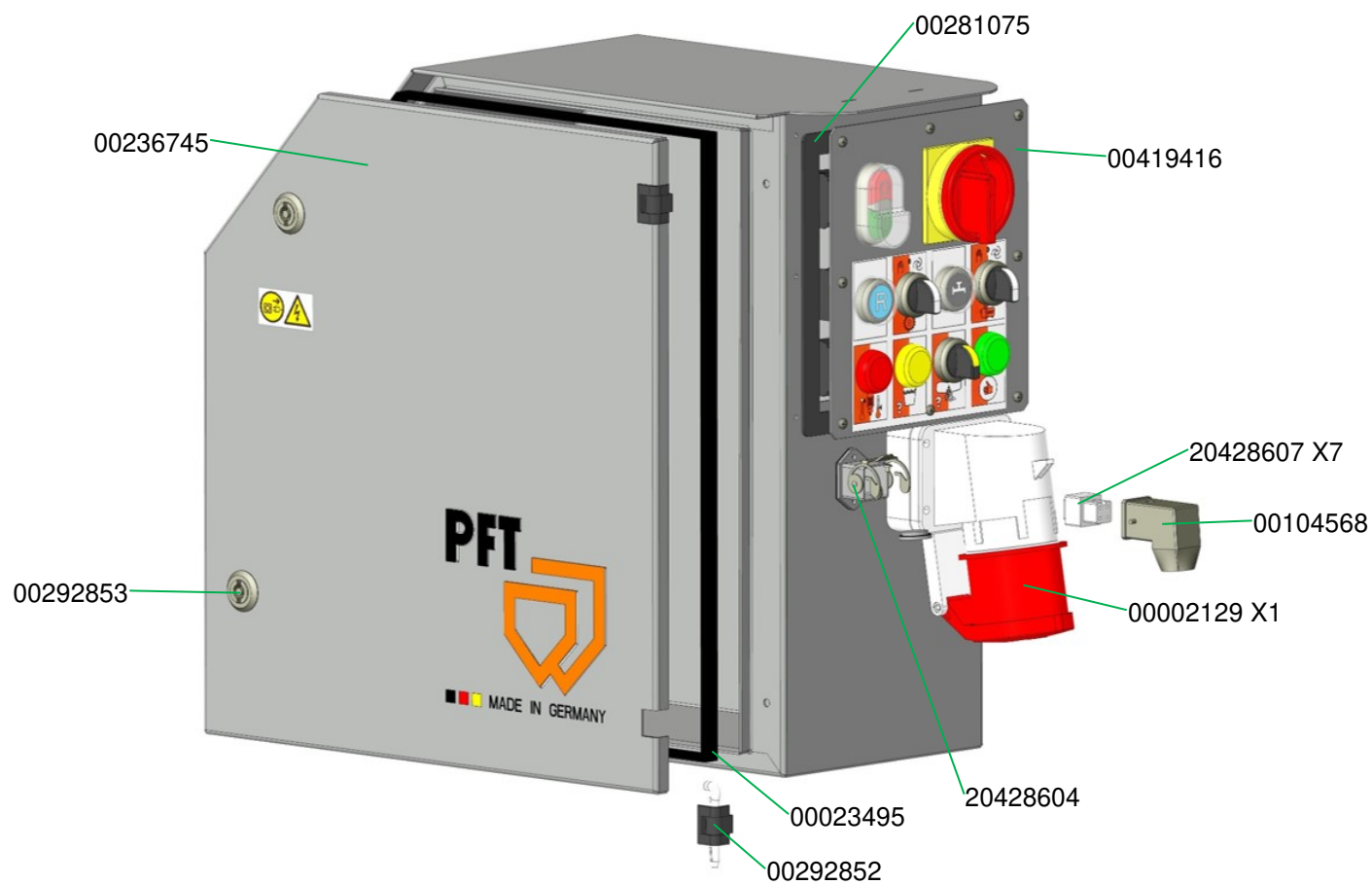
Armaturenblock mit Kugelhahn G 4 Art.-Nr. 00687710
Water manifold G 4 part number 00687710



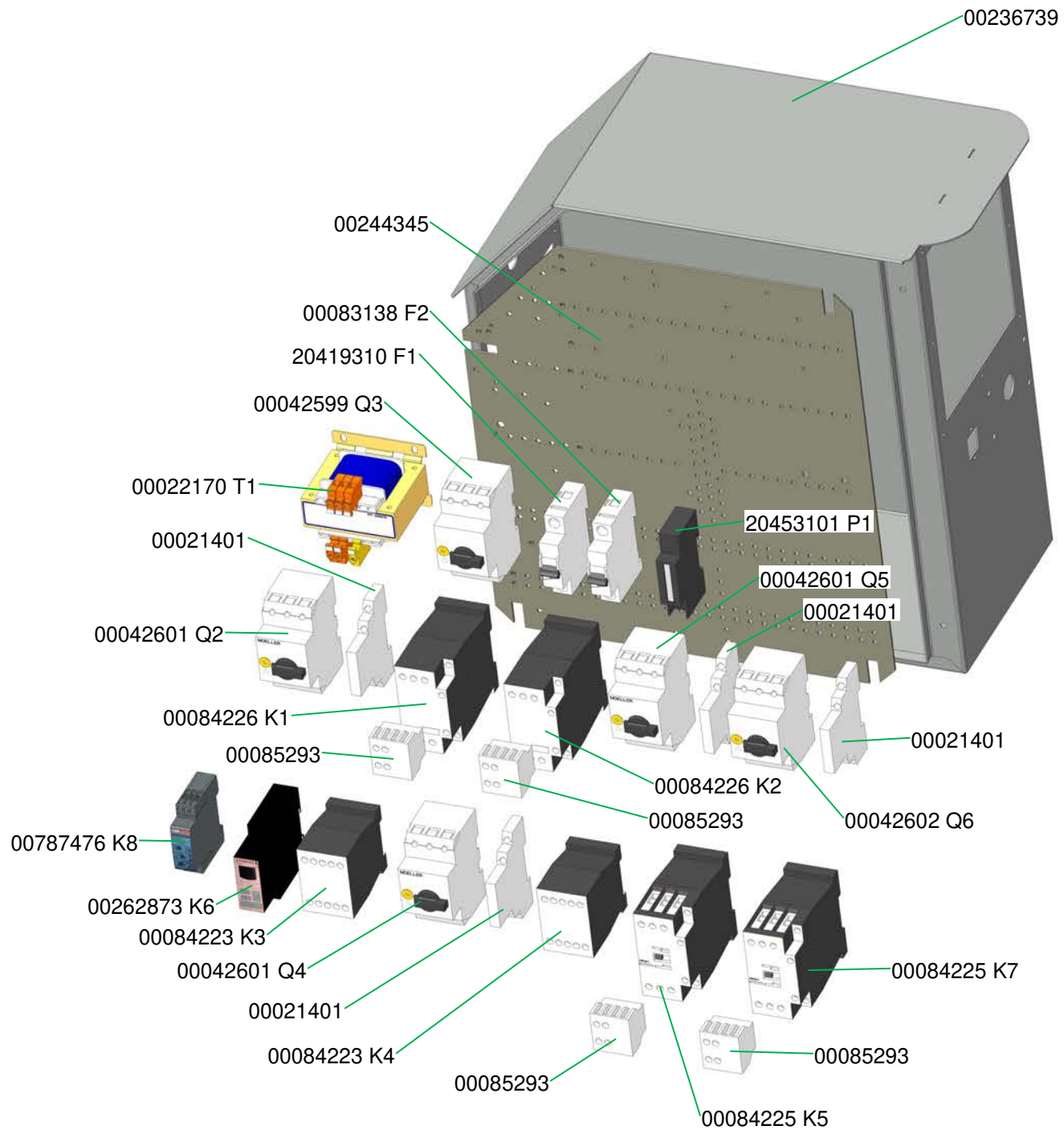




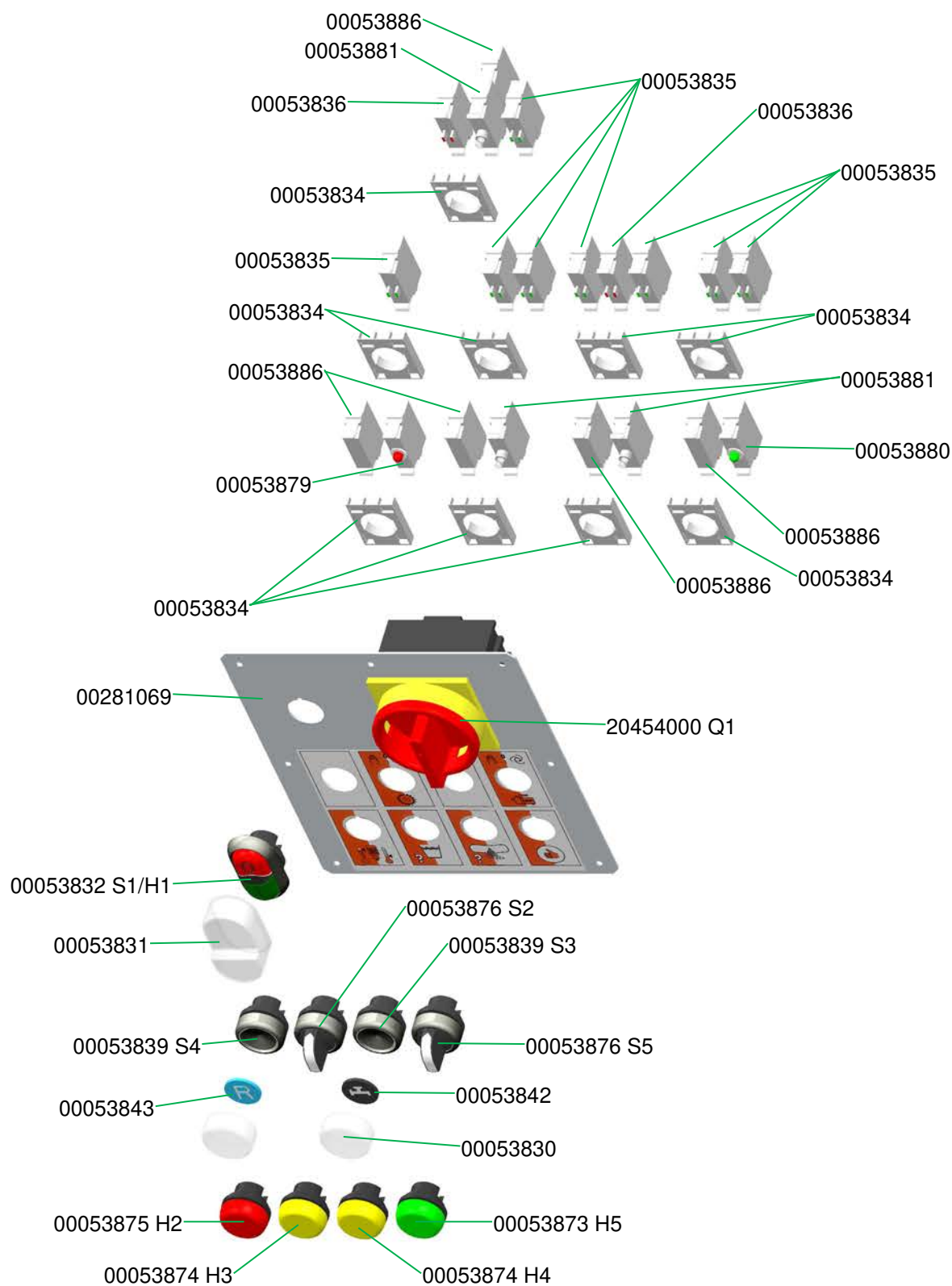
Schaltschrank außen G 4 super / G 4 XL Art.-Nr. 00254666
Control box exterior G 4 super / G 4 XL part number 00254666



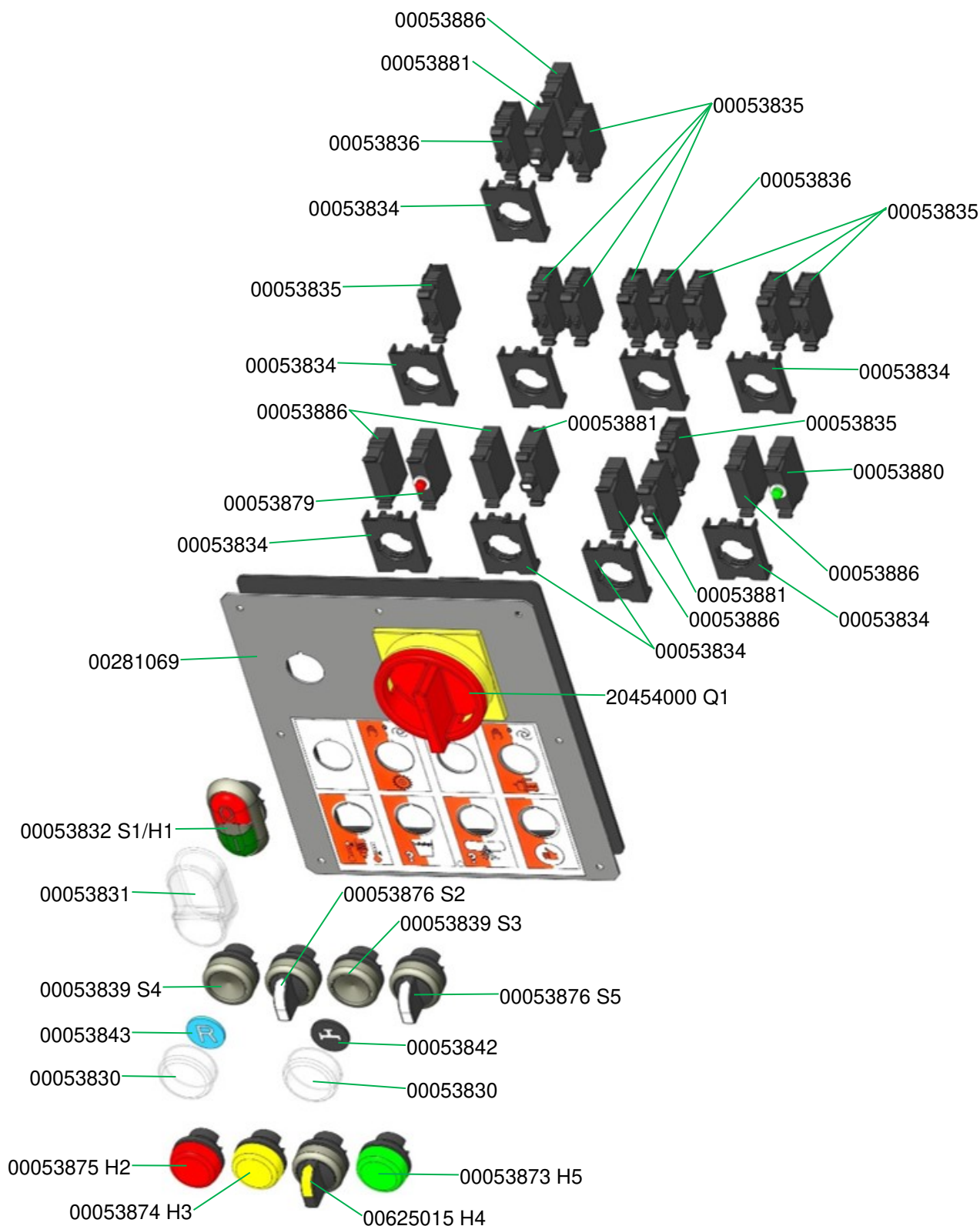
Schaltschrank innen G 4 super / G 4 XL Art.-Nr. 00254666
Control box interior G 4 super / G 4 XL part number 00254666



Schalterblende komplett G 4 super / G 4 XL **bis 02.2022** Art.-Nr. 00419416
 Switch panel complete G 4 super / G 4 XL **until 02.2022** part number 00419416



Schalterblende komplett G 4 super / G 4 XL **ab 02.2022** Art.-Nr. 00419416
 Switch panel complete G 4 super / G 4 XL **from 02.2022** part number 00419416





Empfohlenes Zubehör / Ausrüstung finden Sie im PFT Maschinen- und
Gerätecatalog oder unter
Recommended accessories / equipment can be found in the PFT machine
and device catalog or at
www.pft.net

PFT – ALWAYS AT YOUR SITE



Knauf PFT GmbH & Co. KG
Postfach 60 97343 Iphofen
Einersheimer Straße 53 97346 Iphofen
Deutschland

Telefon +49 9323 31-760
Telefax +49 9323 31-770
Technische Hotline +49 9323 31-1818
info@pft.net
www.pft.net