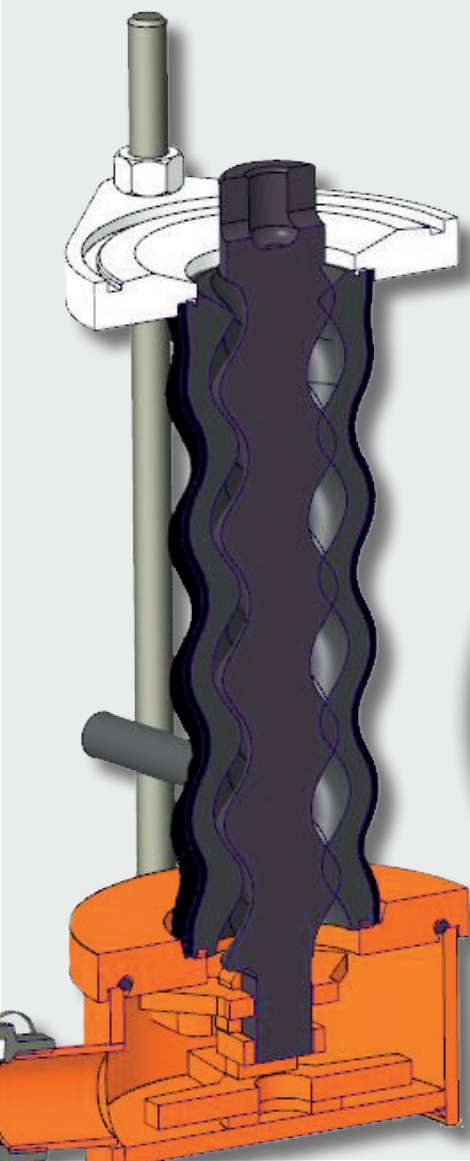


**LESS WEAR
AND TEAR.
LONGER USAGE.**



**D-/R-ROTORS
WITH REINFORCED
TANG**

NEW!



ECONOMICAL. DURABLE. LONG-LASTING.

NEW!

The solution for the well-known construction site problem - tang fractures: The new PFT rotors with reinforced tang. The improved rotor shape with reinforced square tang is more durable, longer lasting and thus significantly more economical.

The problem: Tang fracture

A problem occasionally encountered on construction sites worldwide is the breakage of a rotor tang under too high load. The development process in detail: A progressive wear in the drivetrain (= hauling bracket + mixing shaft) of machines used for many years causes the rotor to slowly move upwards in the stator. This incorrect positioning of the rotor can lead to tang breakage on the rotor when used with an agitator system (e.g. ROTOMIX/ROTOQUIRL) and under excessive load.

The intermediate solution: BIONIK

The optimised hauling bracket from PFT has significantly reduced wear in the drive train, thus minimising the risk of tang breakage on the rotor.

The solution: solid reinforced square tang

The technical adaptation of the rotor towards the square tang shape increases the cross-section and reduces the lever width at the same time. This makes the new rotor tang the strongest in their type! The new-, square tang shape guarantees extreme material reinforcement. The equal power transmission on all 4 sides does not require a predetermined breaking point on the rotor.

PERFECT IN SYSTEM, THOUGHT-OUT IN DETAIL



Technical adjustments:

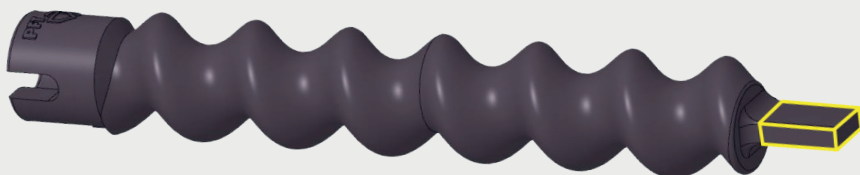
- Square tang shape = extremely reinforced material
- Enlarged cross section
- Reduced leverage width

Benefits:

- Equal power transmission of all 4 sides
- No breaking point
- **Simple conversion:** use rotor with reinforced tang in combination with the new mixing blade and rely on **stability in the future**

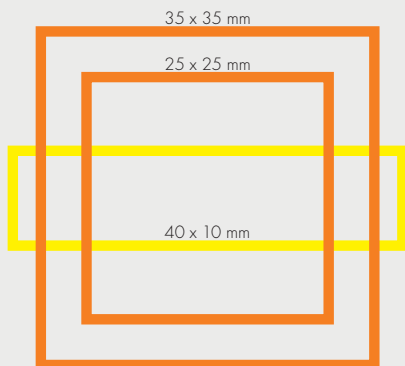
THE SOLUTION IN DETAIL

Old tang:



Reinforced tang:

NEW!



Old tang

40 x 10 mm (400 mm²)

Reinforced tang D-Rotor

25 x 25 mm (625 mm²)

+56%

Reinforced tang R-Rotor

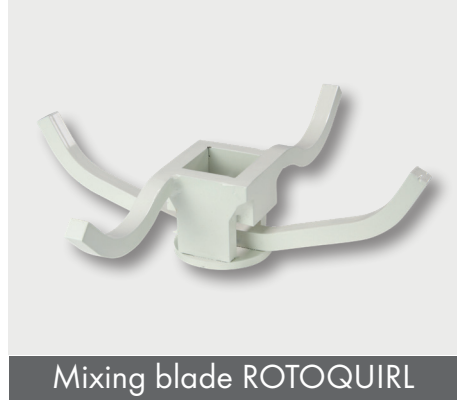
35 x 35 mm (1225 mm²)

+206%

AGITATOR SYSTEMS: ROTOMIX | ROTOQUIRL



Mixing blade ROTOMIX



Mixing blade ROTOQUIRL

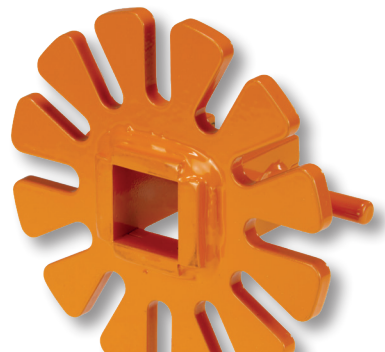
The use of the rotor with reinforced tang requires the use of new mixing blades so that the square tang grips in the agitator.

NEW!

Due to the intensive remixing of the material in the agitator following the rotor/stator system, the mortar is more supple, more productive and is completely lump-free. Additives have an improved activation due to the intensive shearing - ensuring an easy and uniform processing of the material is ensured.

Agitator systems are used with:

- Adhesive and reinforcing mortar
- Insulating plaster
- Floor screed
- Floor filler and many more



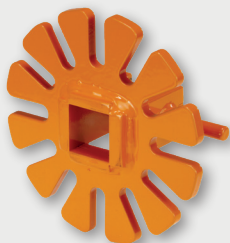
THE NEW ROTORS IN AN OVERVIEW

NEW!

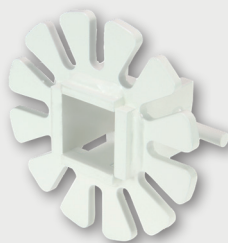


THE NEW MIXING BLADES IN AN OVERVIEW

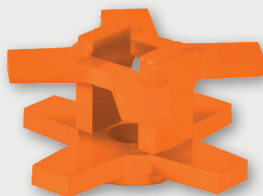
NEW!



Mixing blade ROTOMIX disc for
D-pumps (25 mm), Part no. 00665585



Mixing blade ROTOMIX disc for
R-pump (35 mm), Part no. 00725432



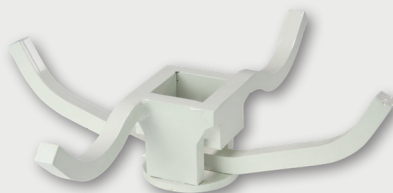
Mixing blade ROTOMIX for
D-pumps (25 mm), Part no. 00665822



Mixing blade ROTOMIX for
R-pump (35 mm), Part no. 00725418



Mixing blade ROTOQUIRL for
D-pumps (25 mm), Part no. 00665851



Mixing blade ROTOQUIRL for
R-pump (35 mm), Part no. 00725426

USE THE VALUABLE SERVICES OF PFT

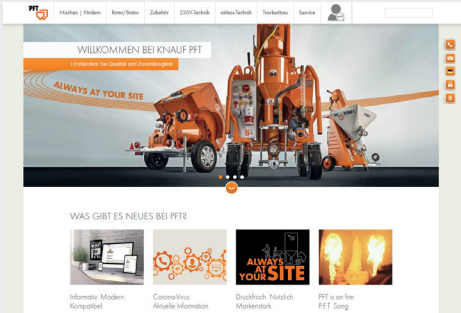


PFT Technical Hotline

Do you have questions about our machine technology or applications of our machines?

Our **free technical hotline** will be happy to help you.

+49 9323 31-1818



PFT Digital

These clicks are worth it!

- > www.pft.net
- > www.youtube.com/knaufpft
- > www.facebook.com/knaufpft
- > www.instagram.com/knauf.pft
- > www.linkedin.com/company/knaufpft



Knauf PFT GmbH & Co. KG
Einersheimer Str. 53
97346 Iphofen
Germany



Flyer Rotor with tang/08.23/PFT