

Ersatzteilliste / Spare parts list

PFT Horizontaler Durchlaufmischer / Horizontal continuous mixer HM 24



Art.-Nr. / part number	Benennung	Designation
00007874	HM 24, 400 V, 3 Ph, 50 Hz (Stahl-Mischrohr)	HM 24, 400 V, 3 Ph, 50 Hz (steel mixing tube)
00008783	HM 24, 400 V, 3 Ph, 50 Hz mit abnehmbarem Auslaufflansch,	HM 24, 400 V, 3 Ph, 50 Hz with removable outlet flange, dosing shaft 35
00020357	HM 24, 400 V, 3 Ph, 50 Hz mit Gummi-Mischrohr	HM 24, 400 V, 3 Ph, 50 Hz with rubber mixing tubebooster pump
00036940	HM 24, 400 V, 3 Ph, 50 Hz mit Gummi-Mischrohr, Steuerung für Füllstandsonde und Außenrüttler	HM 24, 400 V, 3 Ph, 50 Hz with rubber mixing tube, controller for the level sensor and the external vibrator
00070219	HM 24, 400 V, 3 Ph, 50 Hz mit Gummi-Mischrohr, Schaltschrank und AVO 500	HM 24, 400 V, 3 Ph, 50 Hz with rubber mixing tube, control box and AVO 500
00463945	HM 24, 400 V, 3 Ph, 50 Hz mit Gummi-Mischrohr, Schaltschrank und AV 1000	HM 24, 400 V, 3 Ph, 50 Hz with rubber mixing tube, control box and AV 1000
00596843	HM 24, 400 V, 3 Ph, 50 Hz, 6,05 kW für 16 mm Pagel-Vergussmörtel	HM 24, 400 V, 3 Ph, 50 Hz, 6.05 kW for 16 mm Pagel grouting mortarand rubber mixing zone

© Knauf PFT GmbH & Co. KG
Postfach 60 97343 Iphofen
Einersheimer Straße 53 97346 Iphofen
Deutschland

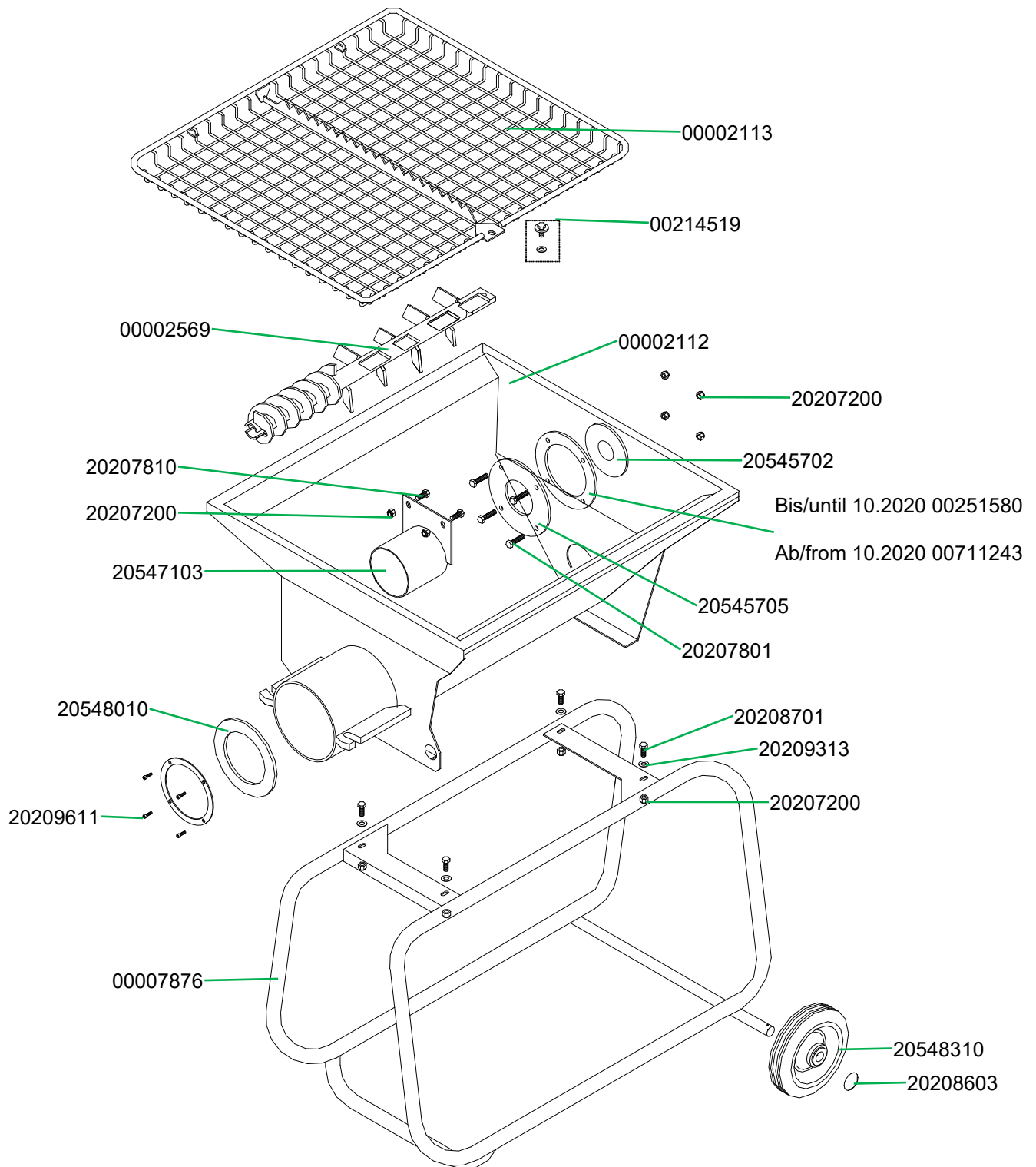
Telefon +49 9323 31-760
Telefax +49 9323 31-770
Technische Hotline +49 9323 31-1818

info@pft.net
www.pft.net

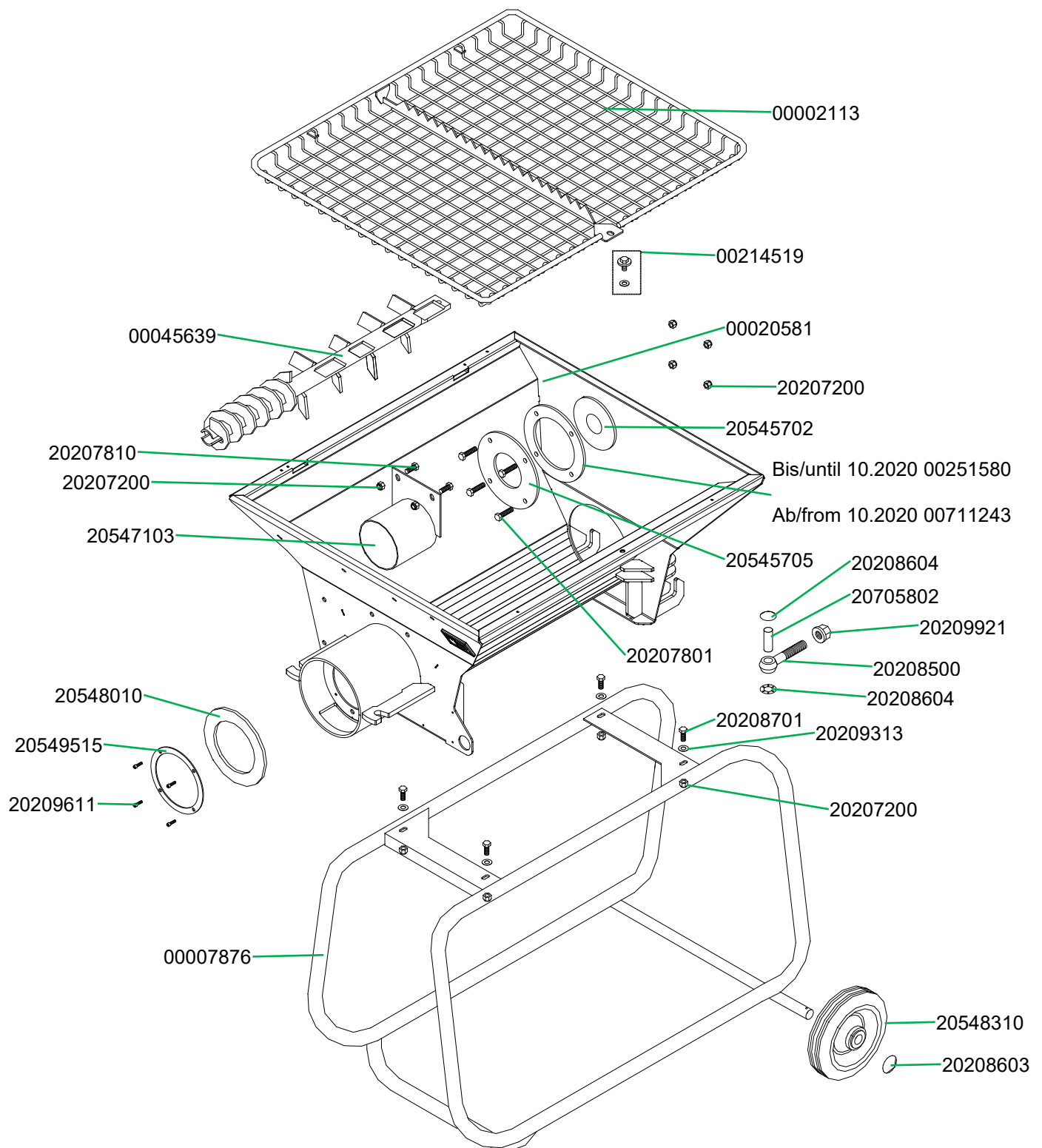
Materialbehälter mit Rahmen	6
Material hopper with frame	6
Materialbehälter mit Rahmen für Maschine Art.-Nr. 00596843	7
Material hopper with frame for maschine part number 00596843	7
Getriebemotor 3,3 kW	8
Gear motor 3.3 kW	8
Getriebemotor 3,3 kW Art.-Nr. 00673161 ab 08.2020	9
Gear motor 3.3 kW part number 00673161 from 08.2020	9
Getriebemotor 6,05 kW Art.-Nr. 00655969	10
Gear motor 6.05 kW part number 00655969	10
Mischrohr HM 22/24 Art.-Nr. 00002116	11
Mixing tube HM 22/24 part number 00002116	11
Mischrohr HM 200, abnehmbarer Auslaufflansch Art.-Nr. 20548520	12
Mixing tube HM 200, removable outlet flange part number 20548520	12
Mischrohr HM 2/200/2002, 300 mm länger Art.-Nr. 00001391	13
Mixing tube HM 2/200/2002, 300 mm longer part number 00001391	13
Mischrohr HM 2 Gummi, starrer Mörtelauslaufflansch Art.-Nr. 00012594	14
Mixing tube HM 2 rubber, rigid mortar outlet flange part number 00012594	14
Kabelsatz HM 24 Art.-Nr. 00002127	15
Cable set for HM 24 part number 00002127	15
Halterung mit Anbaustecker HM 22/24/2002	16
Support for connector HM 22/24/2002	16
Kabelsatz HM 24 400 V, 3 Ph, 50 Hz, 6,05 kW Art.-Nr. 00598596	17
Cable set for HM 24 400 V, 3 Ph, 50 Hz, 6.05 kW part number 00598596	17
Schaltschrank HM 24 Art.-Nr. 00008735	18
Control box HM 24 part number 00008735	18
Wasserarmatur HM 24 Art.-Nr. 00002119	19
Water manifold HM 24 part number 00002119	19
Druckerhöhungspumpe HM 24 Art.-Nr. 00070238	20
Water pressure booster pump HM 24 part number 00070238	20
Druckerhöhungspumpe AV1000 HM 24 Art.-Nr. 00466201	21

Water pressure booster pump AV1000 HM 24 part number 00466201.....	21
--	----

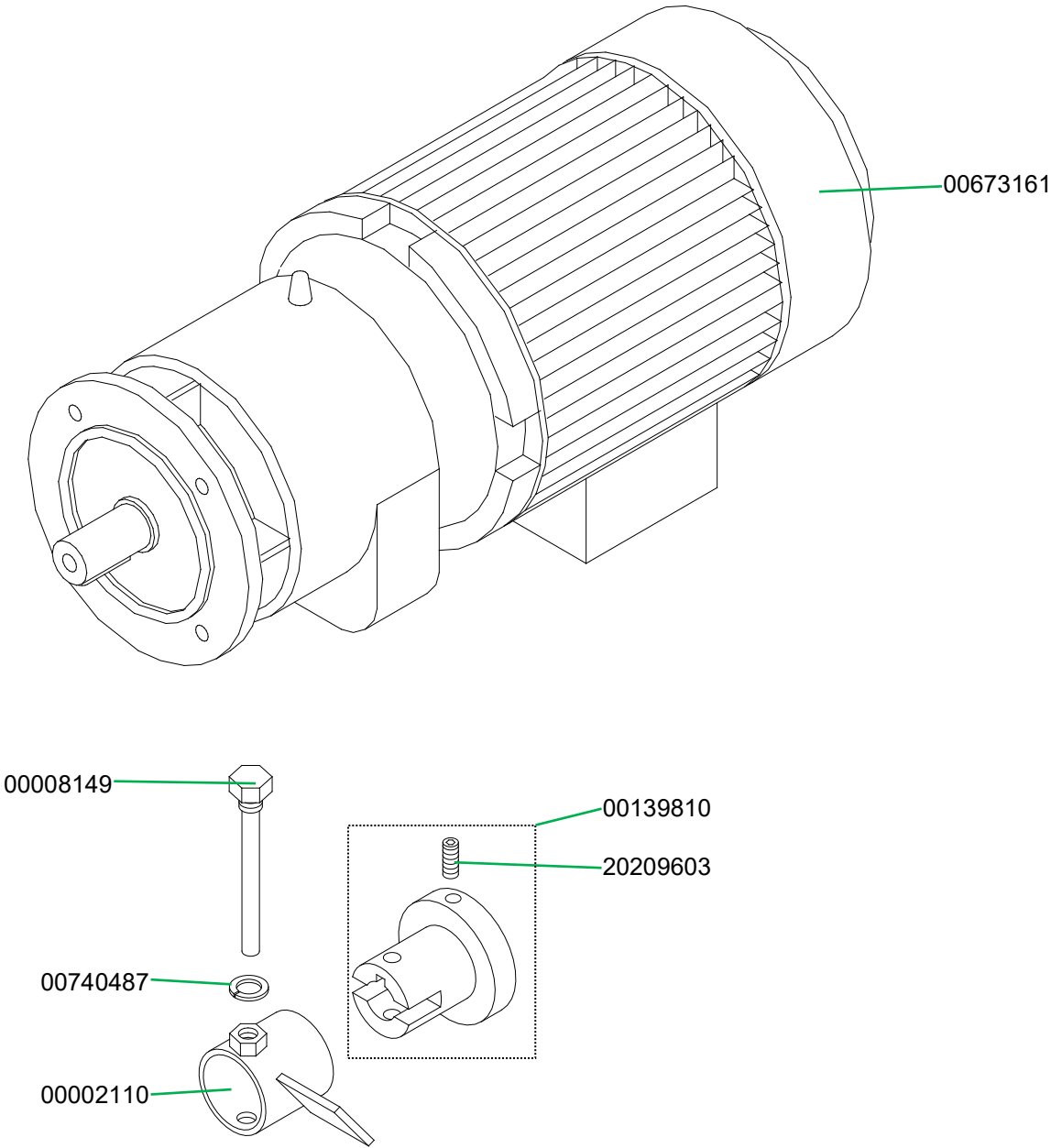
Materialbehälter mit Rahmen
Material hopper with frame

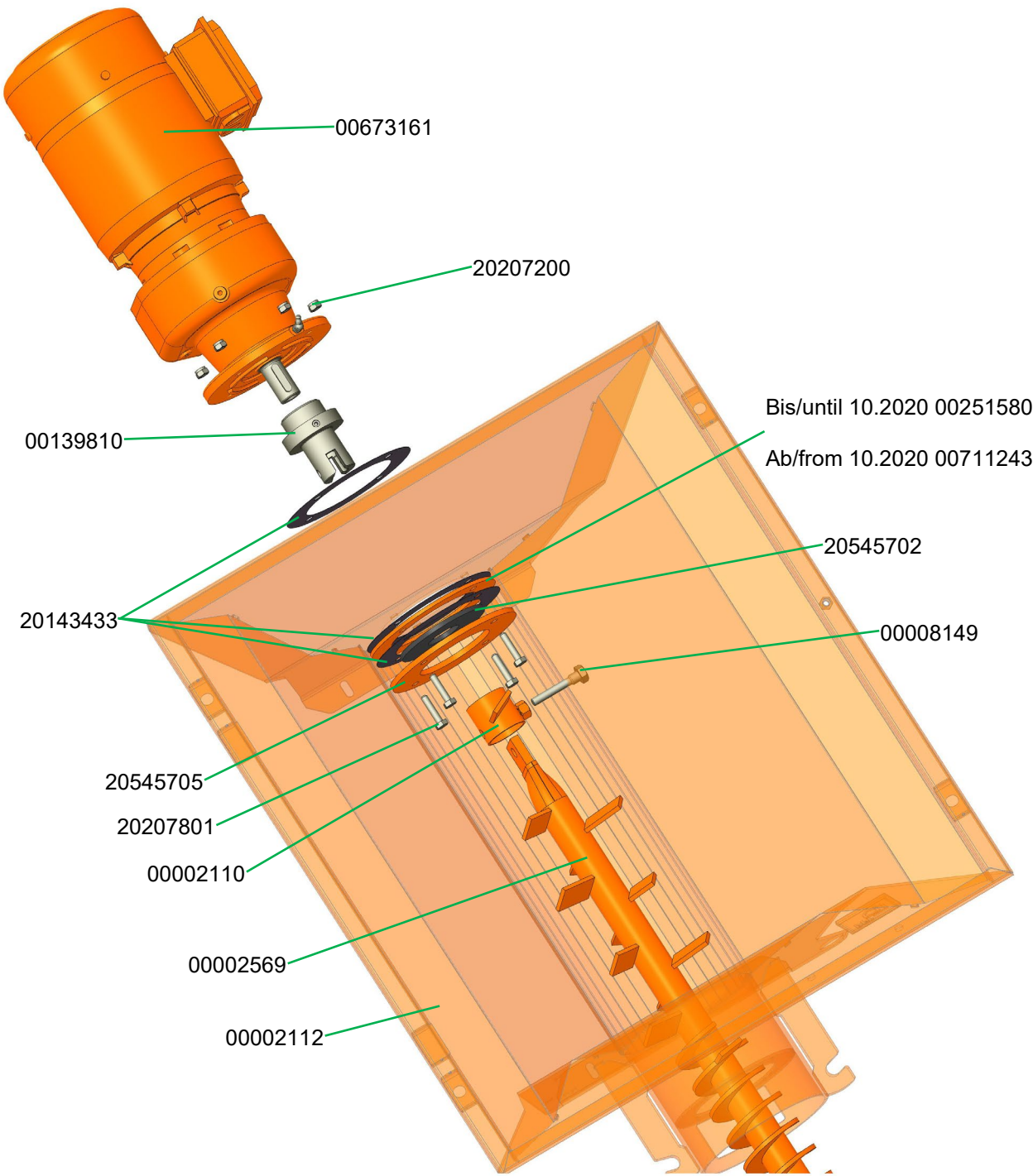


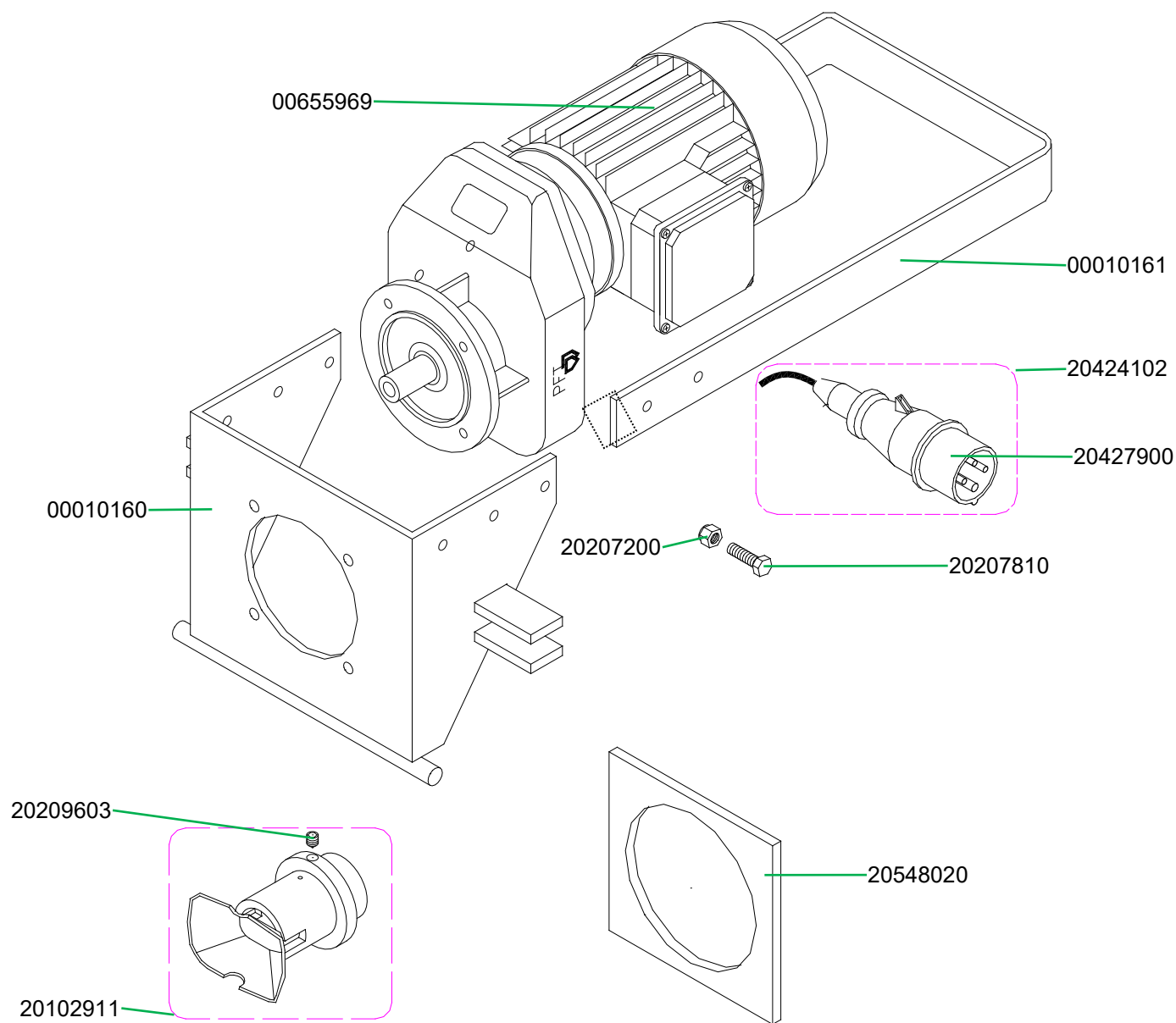
Materialbehälter mit Rahmen für Maschine Art.-Nr. 00596843
 Material hopper with frame for machine part number 00596843



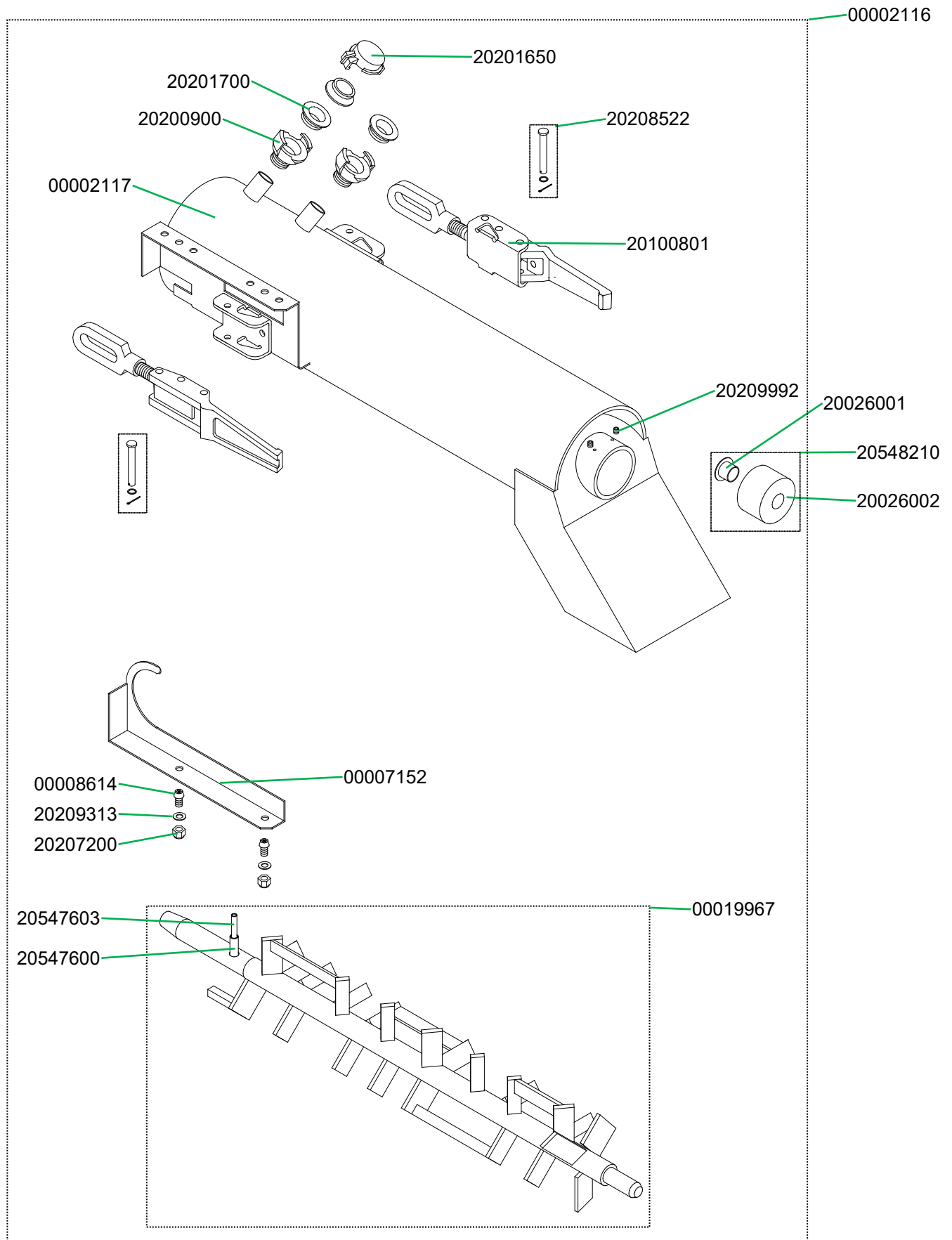
Getriebemotor 3,3 kW
Gear motor 3.3 kW



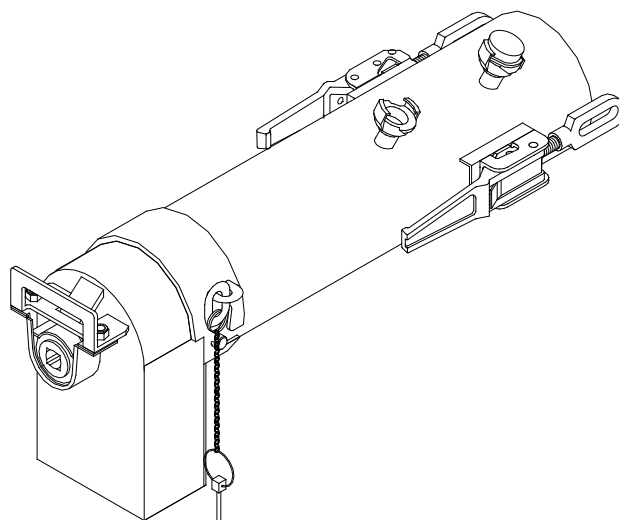
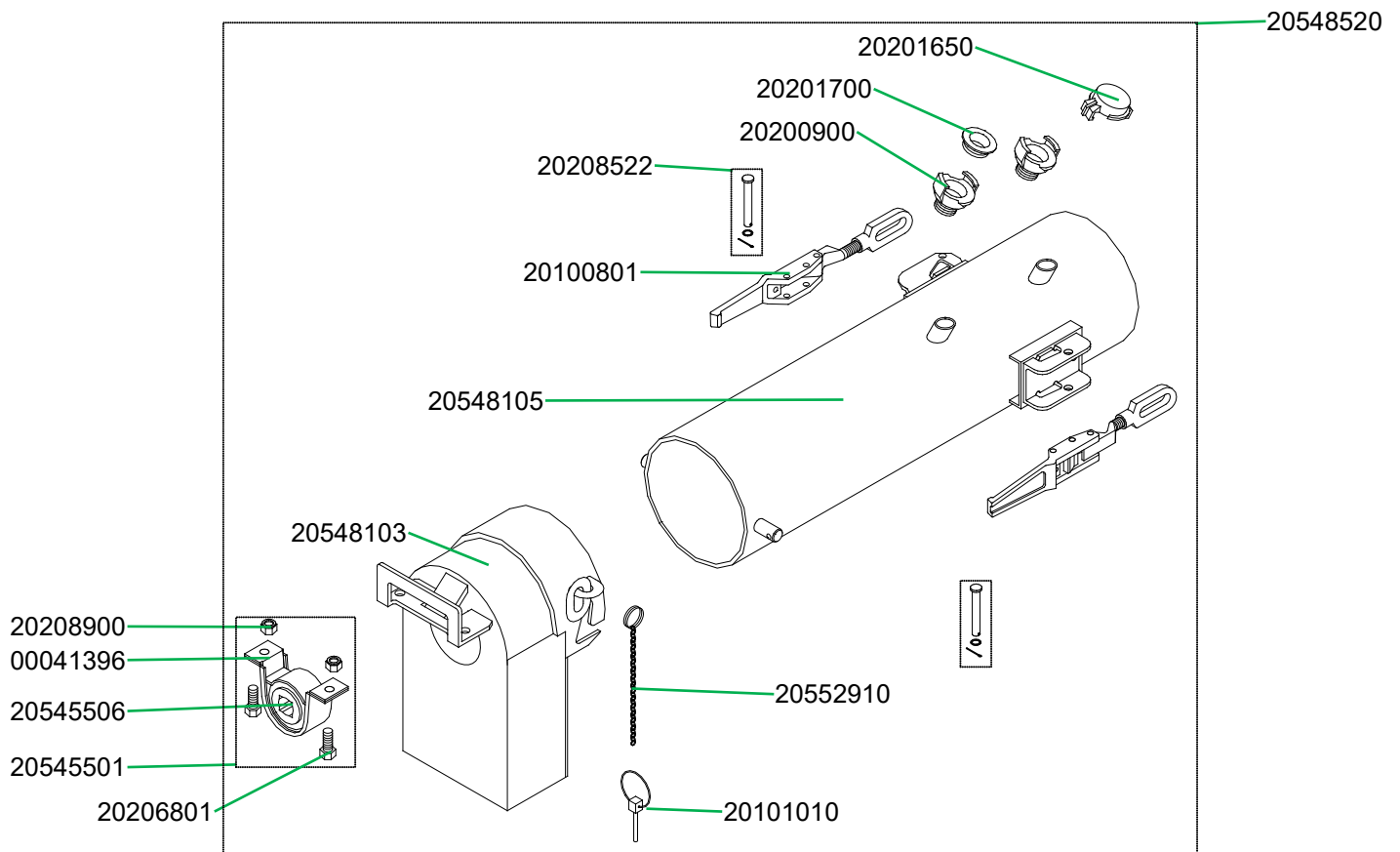




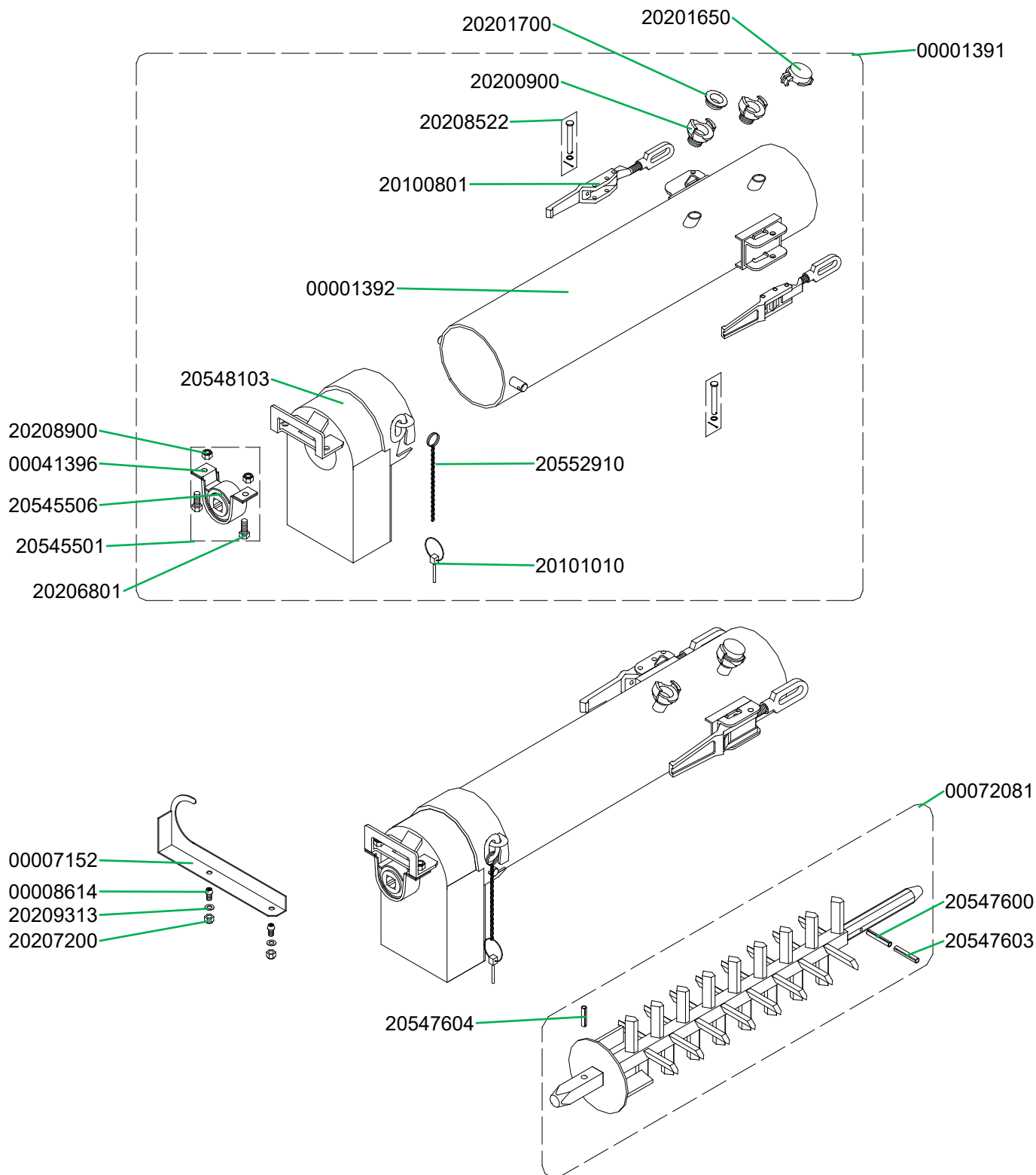
Mischrohr HM 22/24 Art.-Nr. 00002116
 Mixing tube HM 22/24 part number 00002116



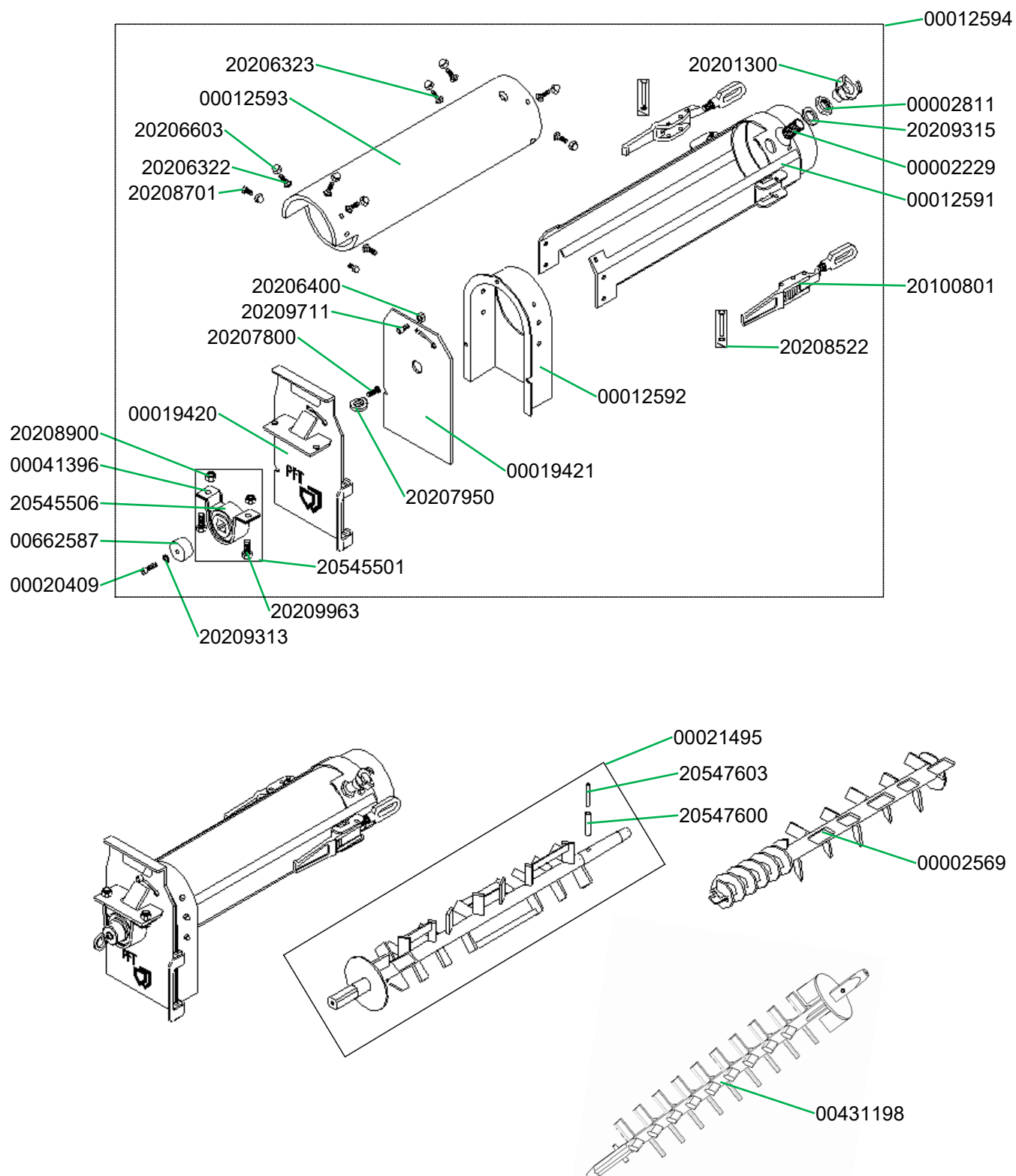
Mischrohr HM 200, abnehmbarer Auslaufflansch Art.-Nr. 20548520
 Mixing tube HM 200, removable outlet flange part number 20548520



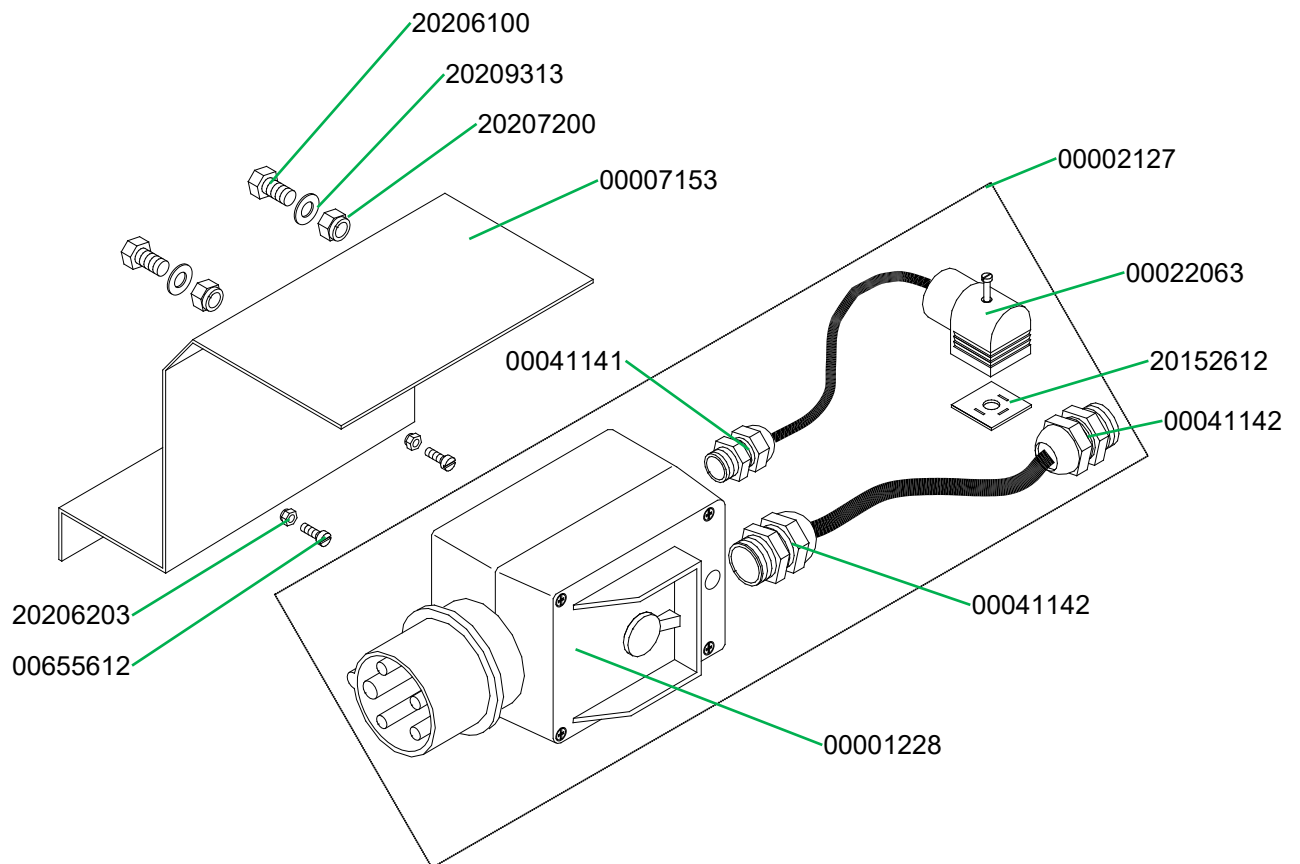
Mischrohr HM 2/200/2002, 300 mm länger Art.-Nr. 00001391
 Mixing tube HM 2/200/2002, 300 mm longer part number 00001391



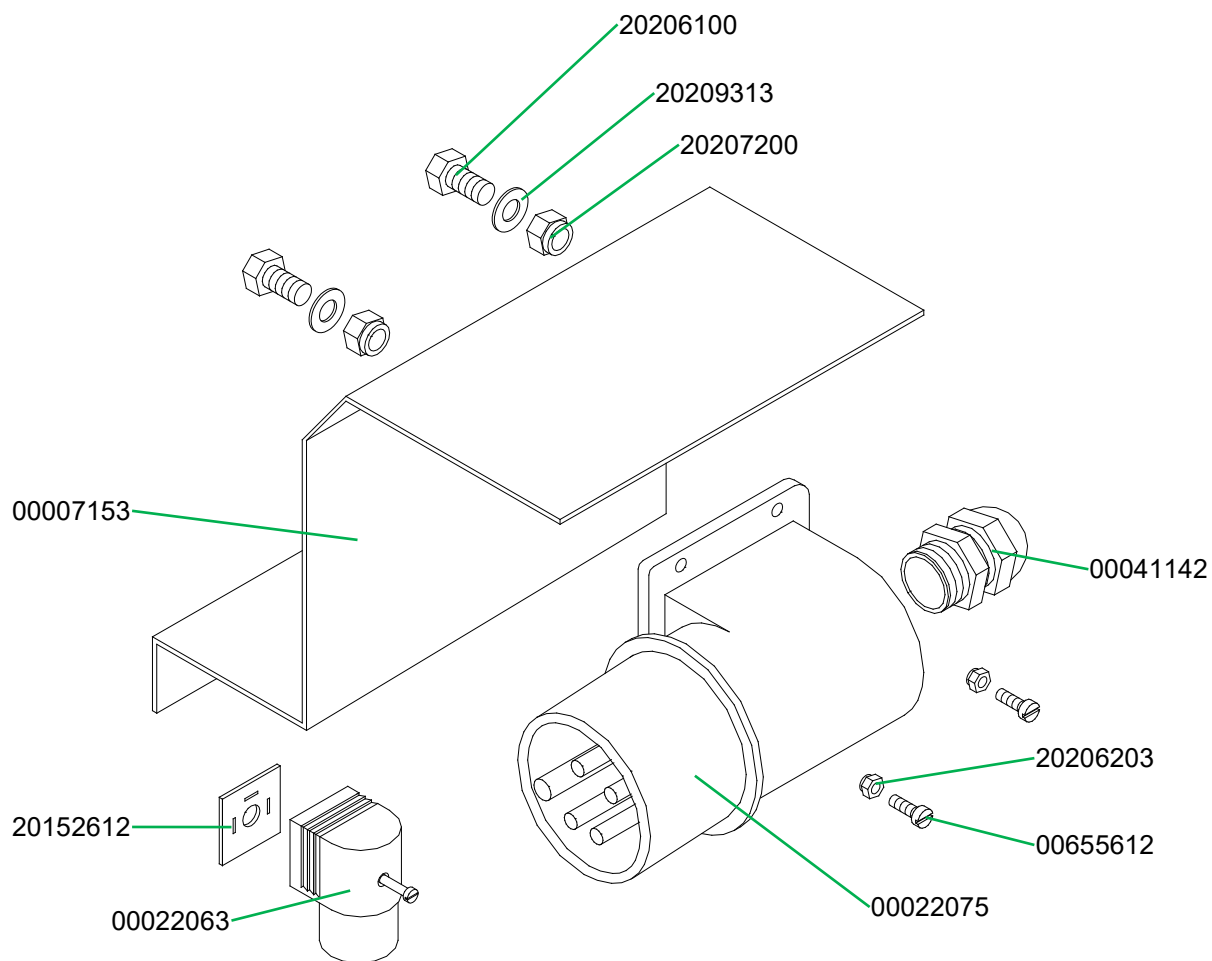
Mischrohr HM 2 Gummi, starrer Mörtelauslaufflansch Art.-Nr. 00012594
 Mixing tube HM 2 rubber, rigid mortar outlet flange part number 00012594

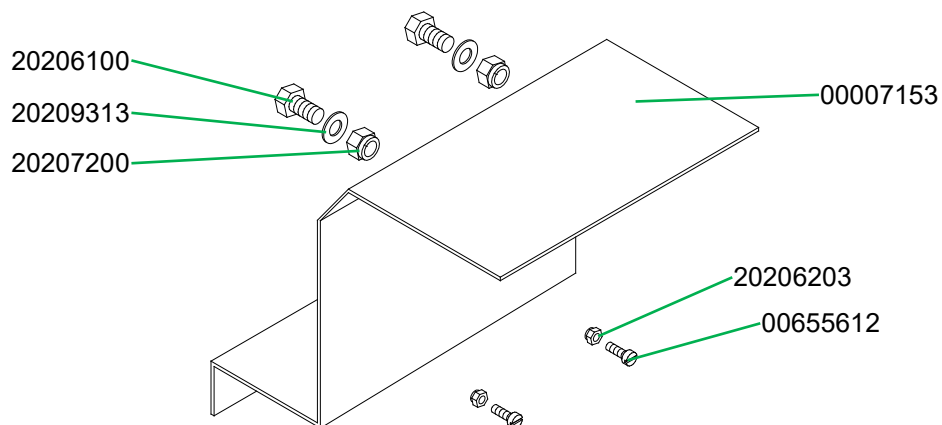
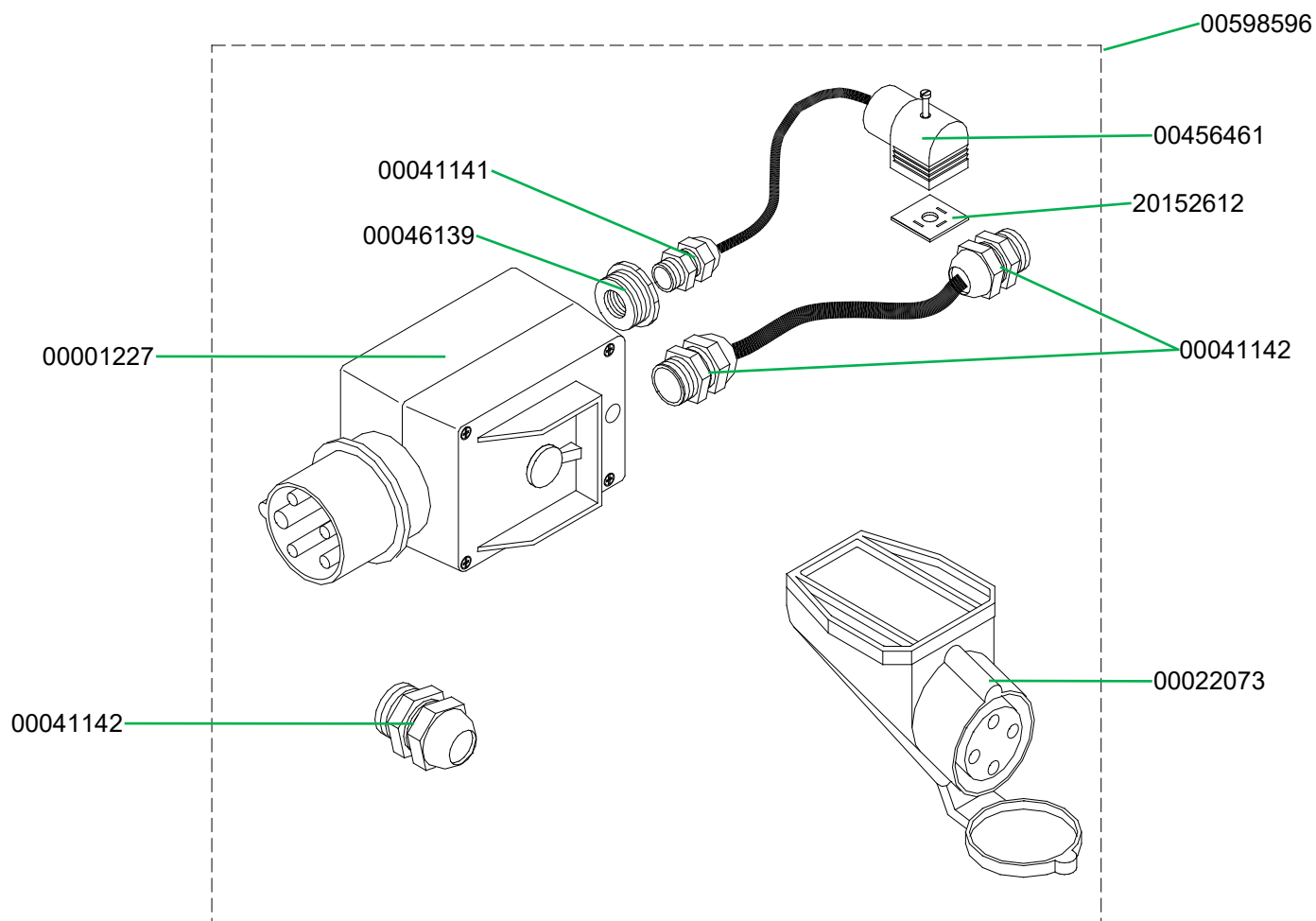


Kabelsatz HM 24 Art.-Nr. 00002127
Cable set for HM 24 part number 00002127

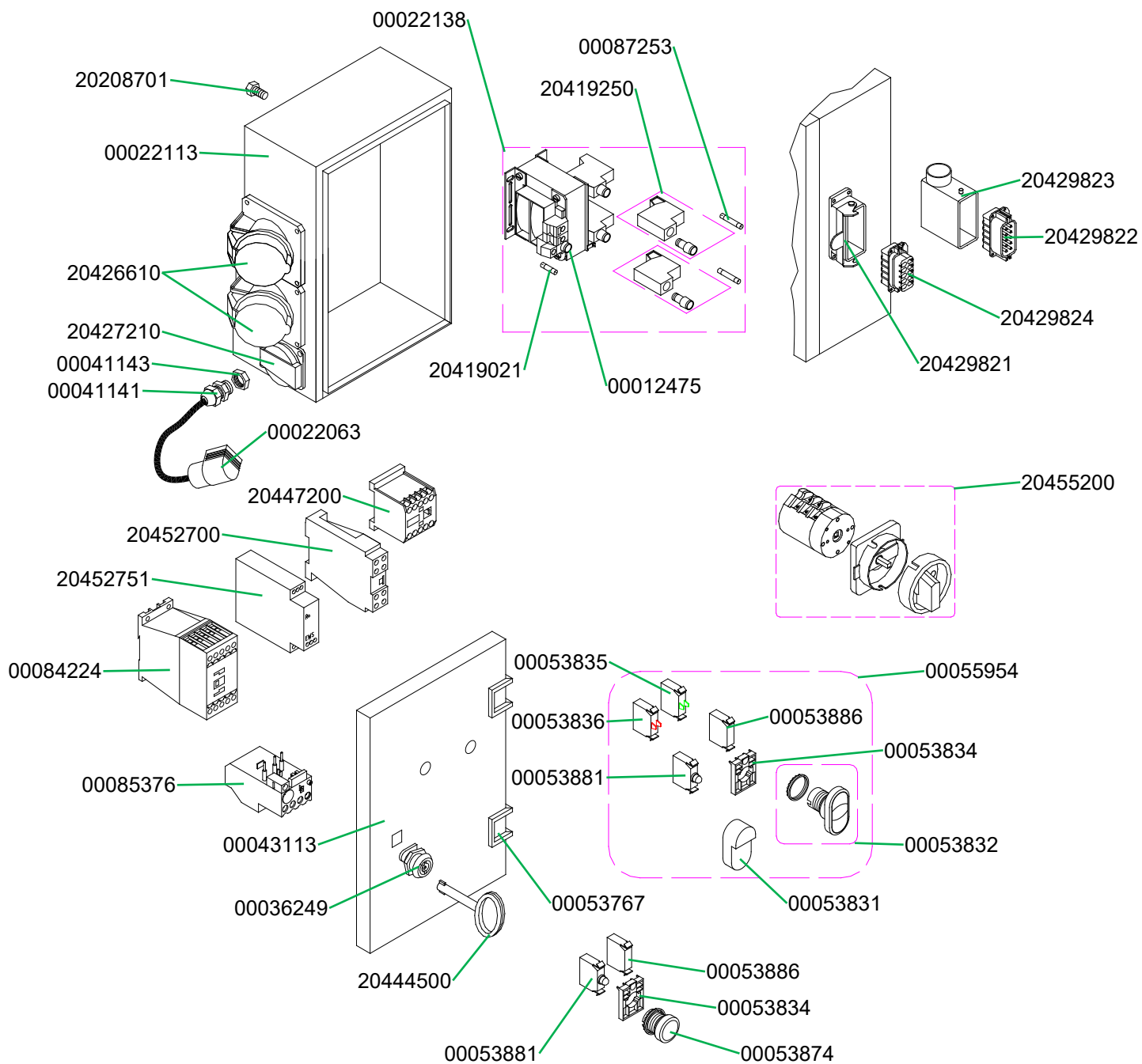


Halterung mit Anbaustecker HM 22/24/2002
Support for connector HM 22/24/2002

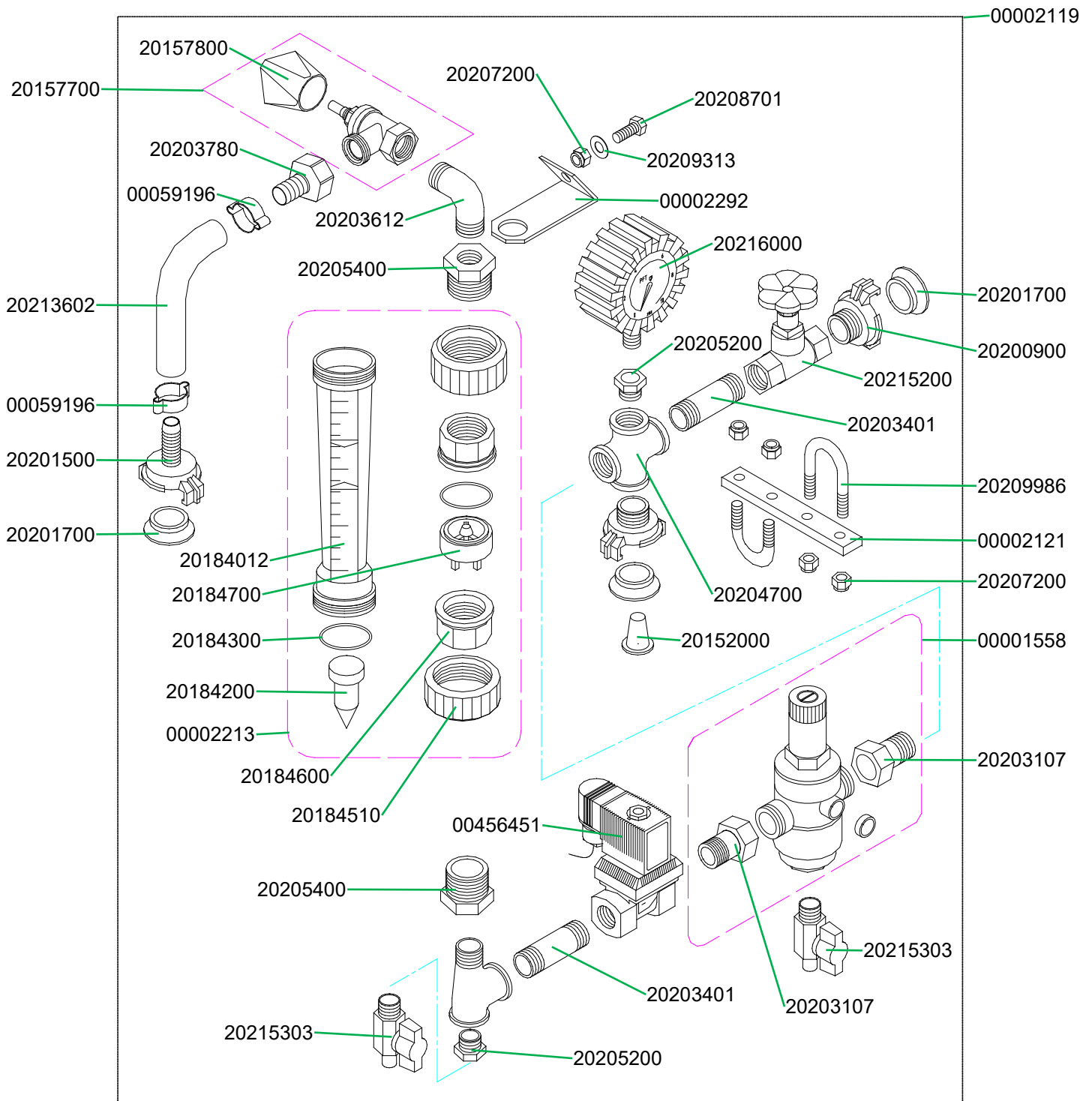




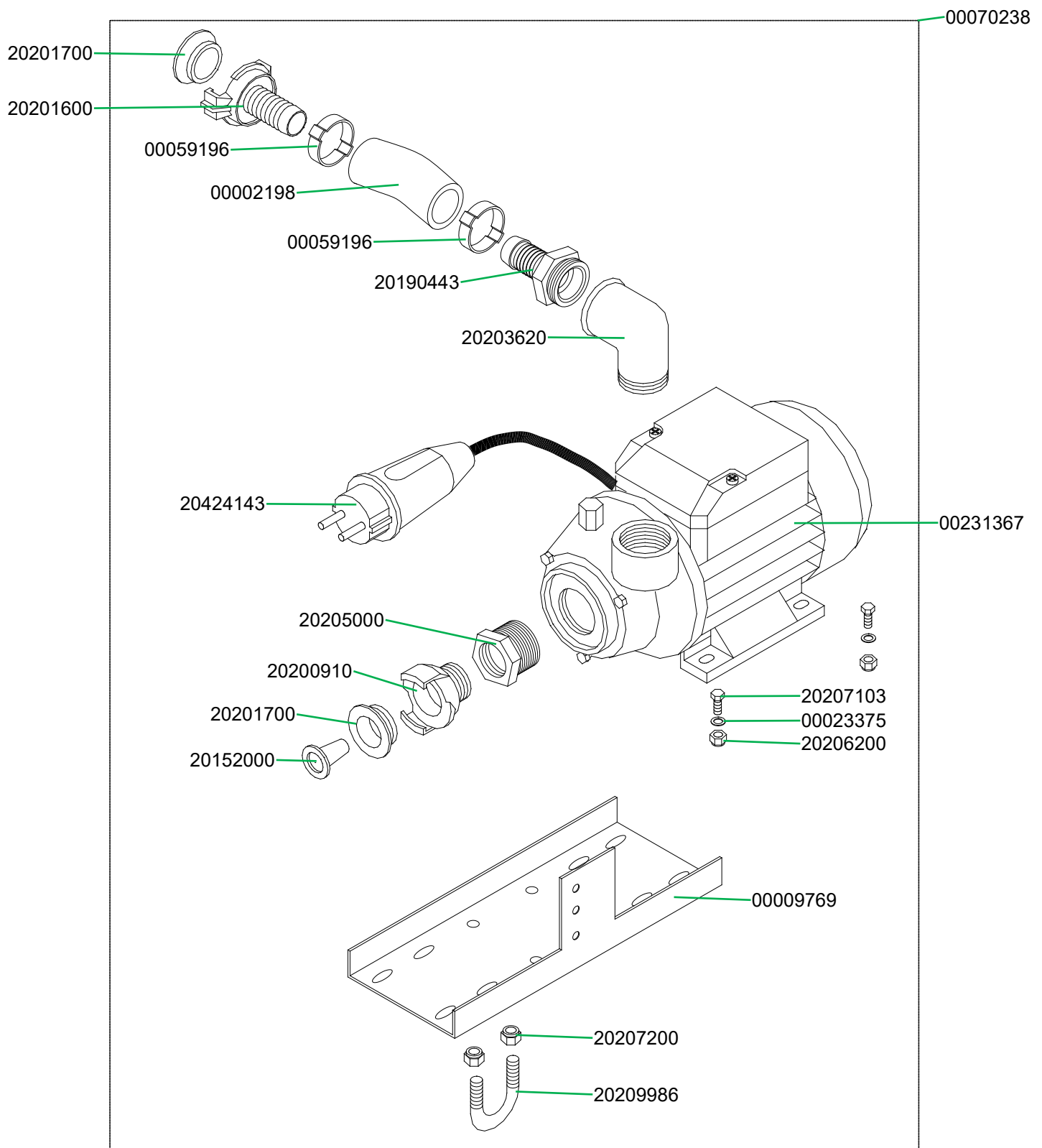
Schaltschrank HM 24 Art.-Nr. 00008735
Control box HM 24 part number 00008735



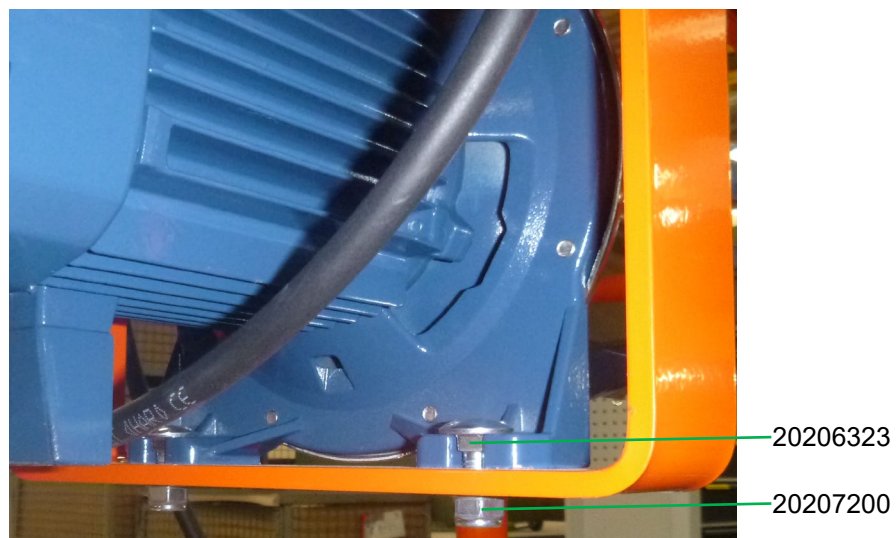
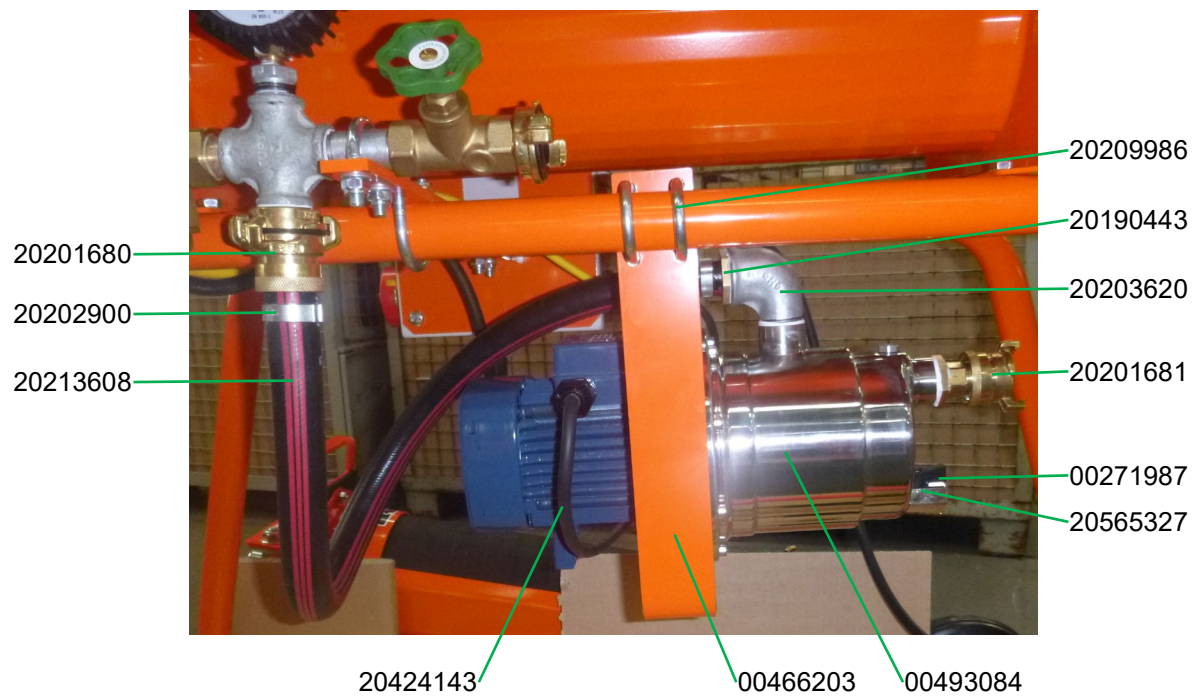
Wasserarmatur HM 24 Art.-Nr. 00002119
Water manifold HM 24 part number 00002119



Druckerhöhungspumpe HM 24 Art.-Nr. 00070238
 Water pressure booster pump HM 24 part number 00070238



Druckerhöhungspumpe AV1000 HM 24 Art.-Nr. 00466201
 Water pressure booster pump AV1000 HM 24 part number 00466201



PFT – ALWAYS AT YOUR SITE



Knauf PFT GmbH & Co. KG
Postfach 60 97343 Iphofen
Einersheimer Straße 53 97346 Iphofen
Deutschland

Telefon +49 9323 31-760
Telefax +49 9323 31-770
Technische Hotline +49 9323 31-1818
info@pft.net
www.pft.net