

Ersatzteilliste / Spare parts list

PFT ROTOQUIRL / PFT ROTOMIX



ROTOQUIRL D-Pumpe:
Art.-Nr. 00767760
Art.-Nr. 00767763



ROTOQUIRL mit Kupplung 50M-Teil
und Festkupplung C, RAL9010 Art.-
Nr. 00711193



ROTOMIX R-Pumpe:
Art.-Nr. 00767642



ROTOMIX R-Pumpe mit
Manometer:
Art.-Nr. 00767686



ROTOMIX D-Pumpe
Art.-Nr. 00767641



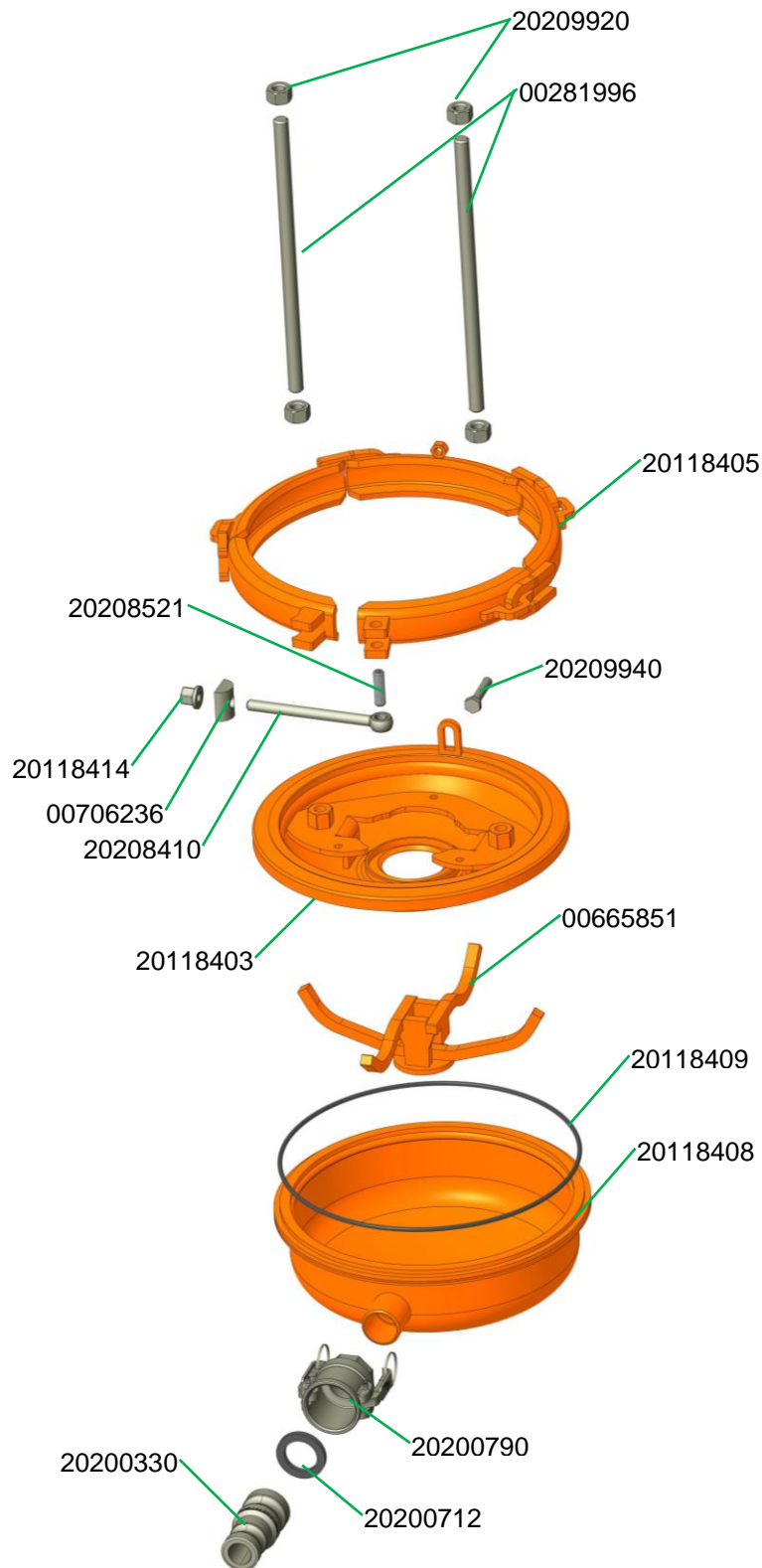
ROTOMIX disc D-Pumpe:
Art.-Nr. 00767745



ROTOMIX B-Pumpe :
Art.-Nr. 00638072
Art.-Nr. 00251139

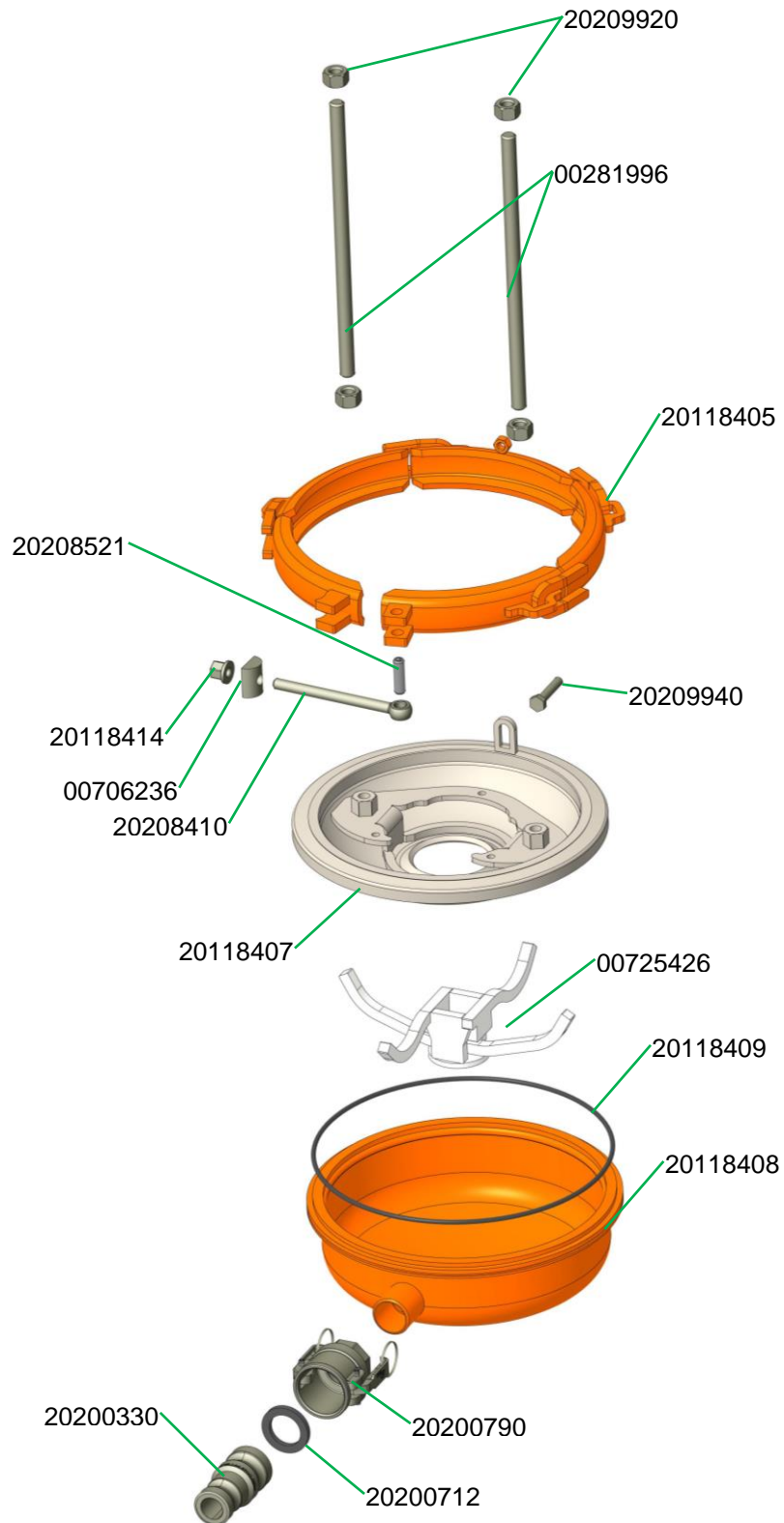
ROTOQUIRL D-Pumpe, Art.-Nr. 00767760	3
ROTOQUIRL D-pump, part number 00767760	3
ROTOQUIRL R-Pumpe, Art.-Nr. 00767763	4
ROTOQUIRL R-pump, part number 00767763	4
ROTOQUIRL mit Kupplung 50M-Teil und Festkupplung C, RAL9010, Art.-Nr. 00711193	5
ROTOQUIRL with coupling 50 female part and fixed coupling C, RAL9010, part number 00711193	5
ROTOMIX R-Pumpe, Art.-Nr. 00767642	6
ROTOMIX R-pump, complete, part number 00767642	6
ROTOMIX R-pump, part number 00767686	7
ROTOMIX D-Pumpe, Art.-Nr. 00767641	8
ROTOMIX D-pump, part number 00767641	8
ROTOMIX disc D-Pumpe, Art.-Nr. 00767745	9
ROTOMIX disc D-pump, part number 00767745	9
ROTOMIX B-Pumpe für RITMO L plus, Art.-Nr. 00638072	10
ROTOMIX B-pump for RITMO L plus, part number 00638072	10
ROTOMIX B-Pumpe 1,5 Stufen, Art.-Nr. 00251139	11
ROTOMIX B-pump 1.5 steps, part number 00251139	11

ROTOQUIRL D-Pumpe, Art.-Nr. 00767760
 ROTOQUIRL D-pump, part number 00767760



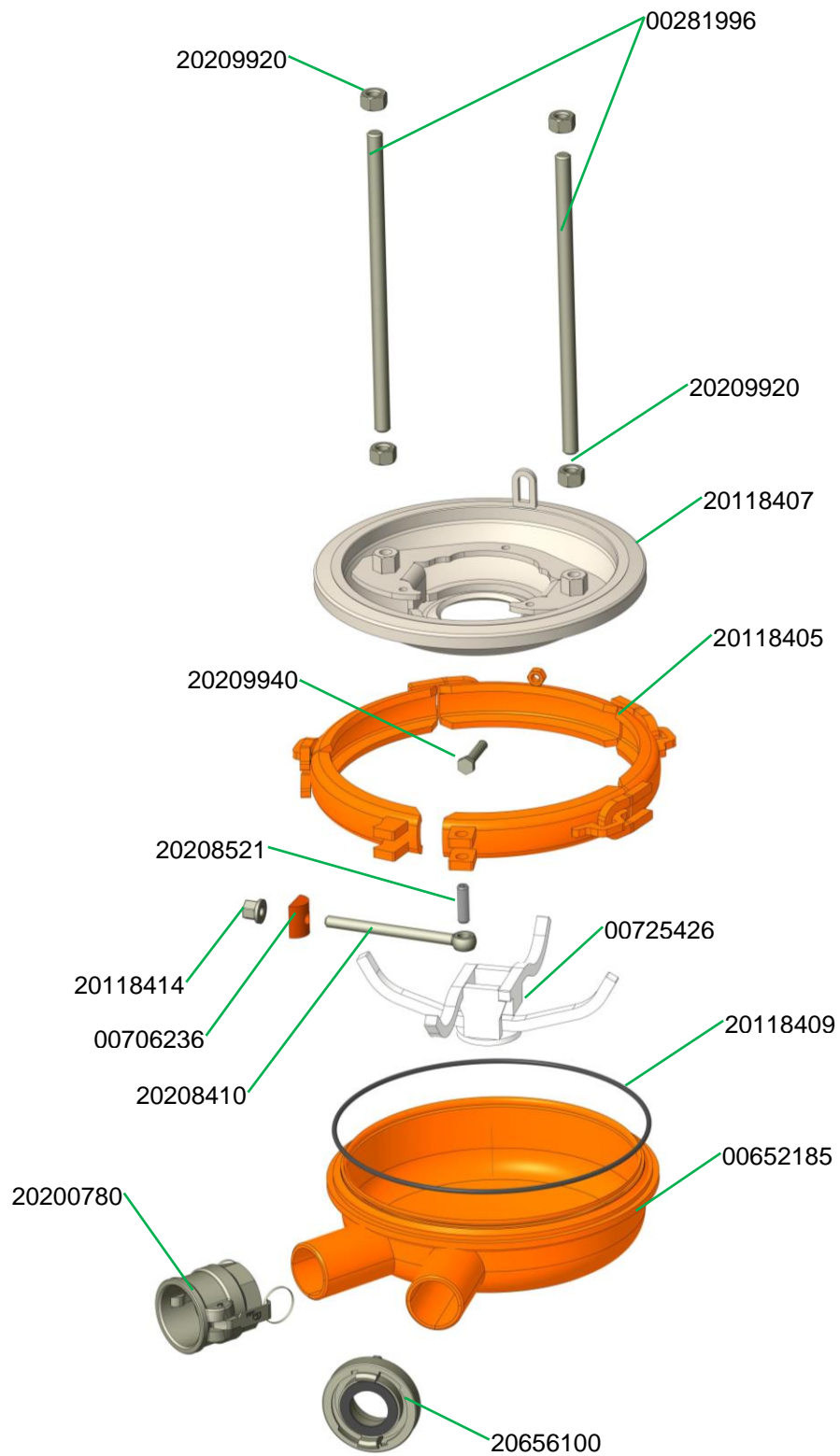
Hinweis: Mischflügel 25 mm für Nachmischer notwendig
 Note: Mixing blade 25 mm necessary for agitator

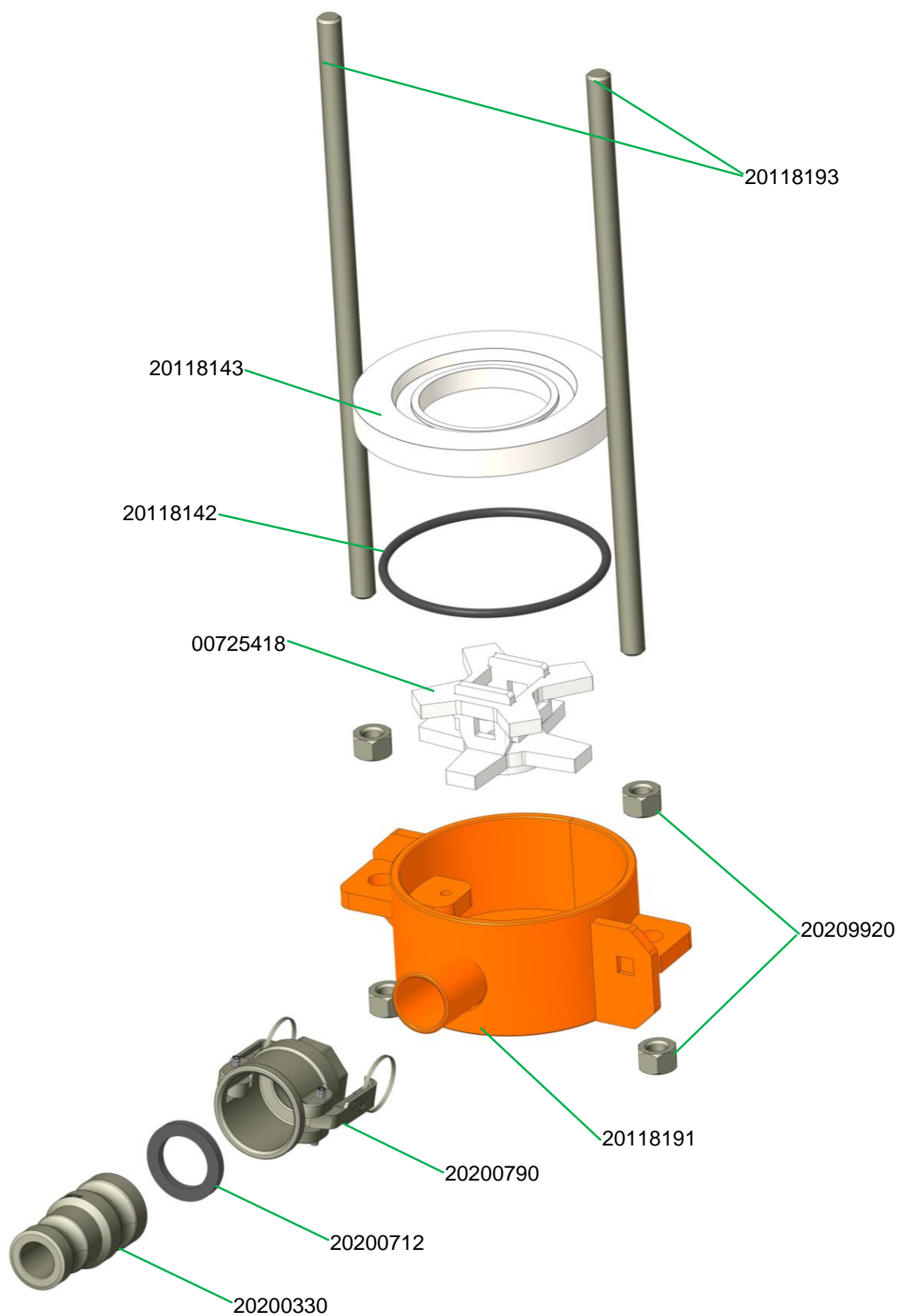
ROTOQUIRL R-Pumpe, Art.-Nr. 00767763
 ROTOQUIRL R-pump, part number 00767763



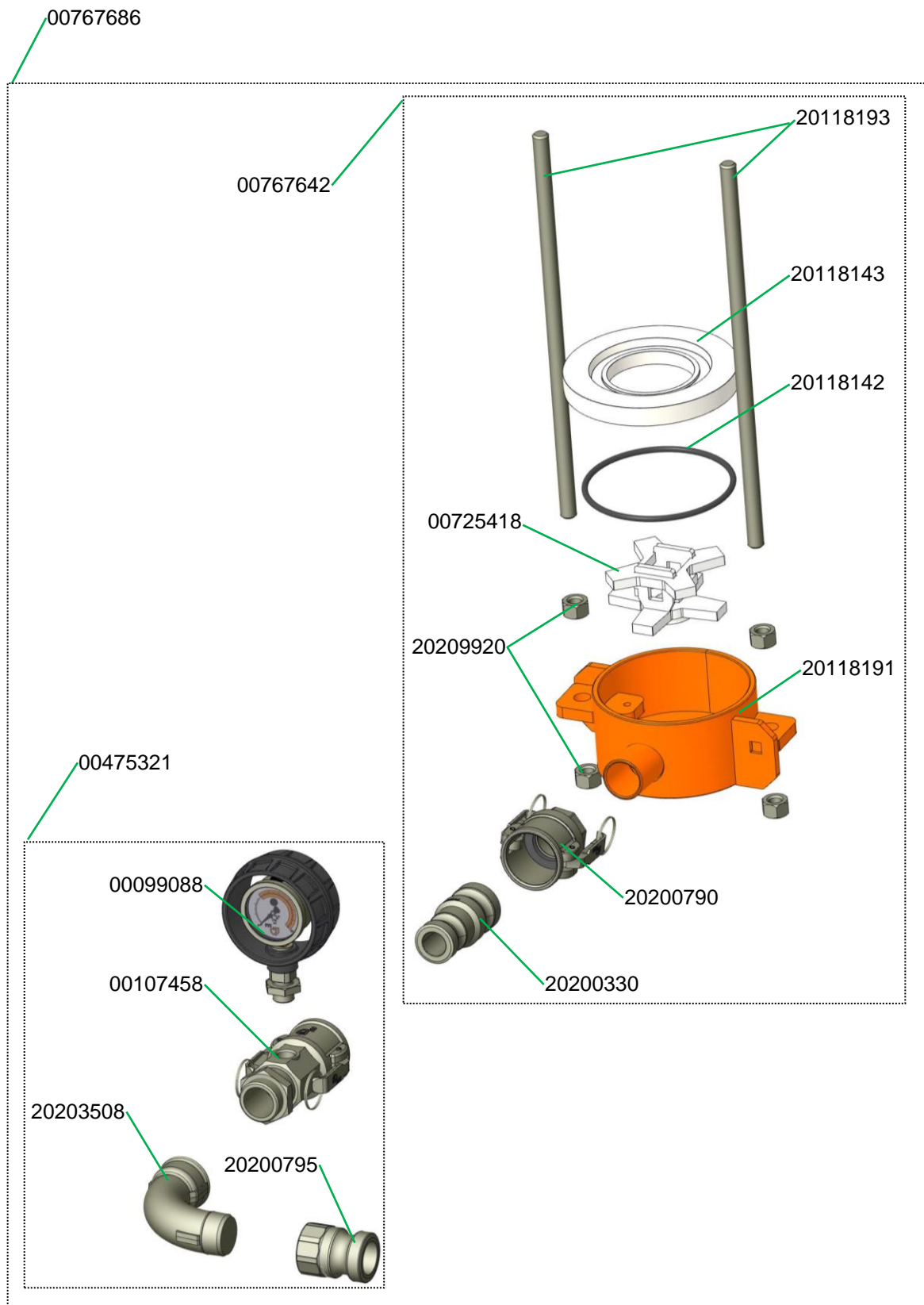
Hinweis: Mischflügel 35 mm für Nachmischer notwendig
 Note: Mixing blade 35 mm necessary for agitator

ROTOQUIRL mit Kupplung 50M-Teil und Festkupplung C, RAL9010, Art.-Nr. 00711193
 ROTOQUIRL with coupling 50 female part and fixed coupling C, RAL9010, part number 00711193



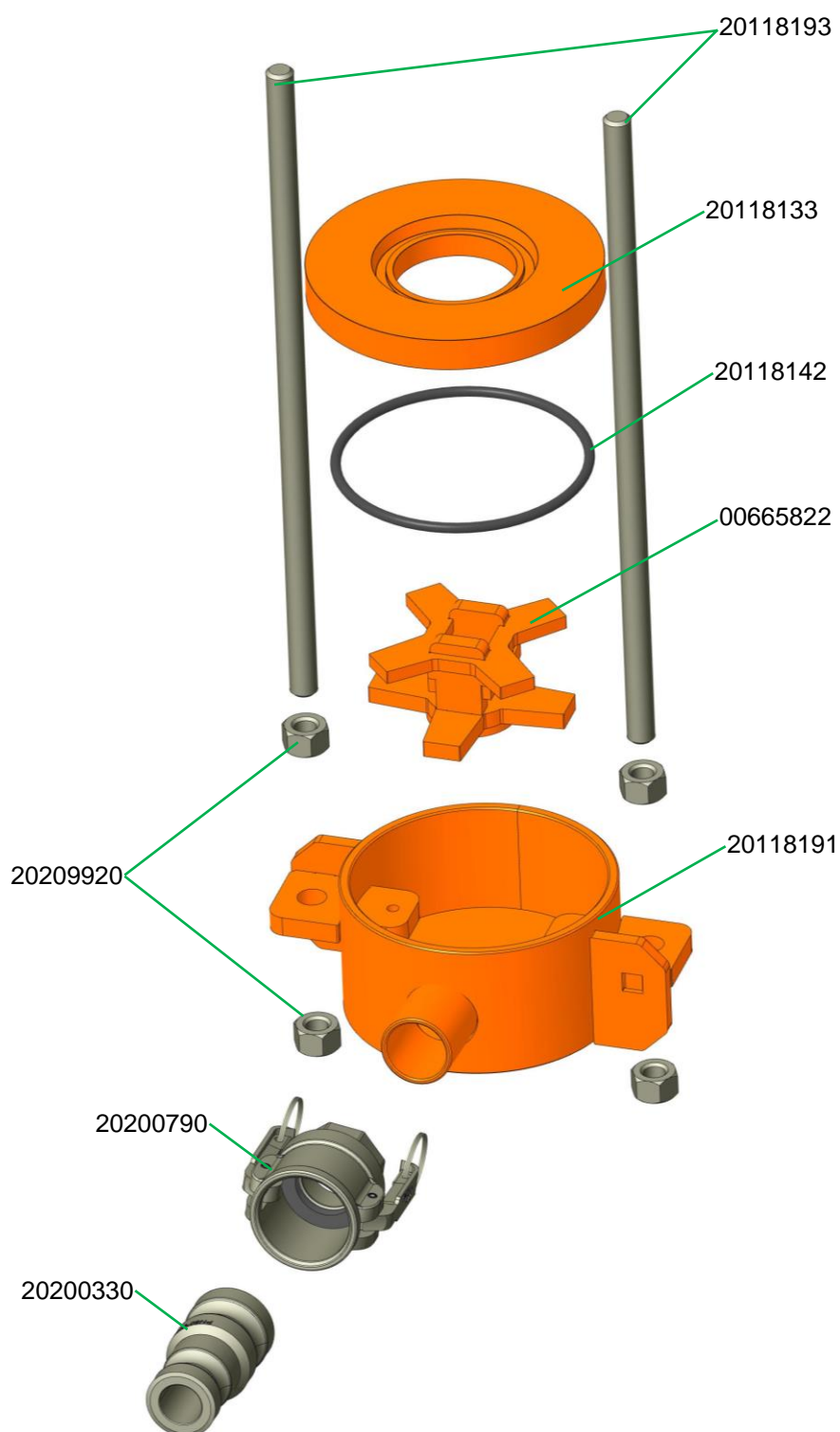


Hinweis: Mischflügel 35 mm für Nachmischer notwendig
Note: Mixing blade 35 mm necessary for agitator



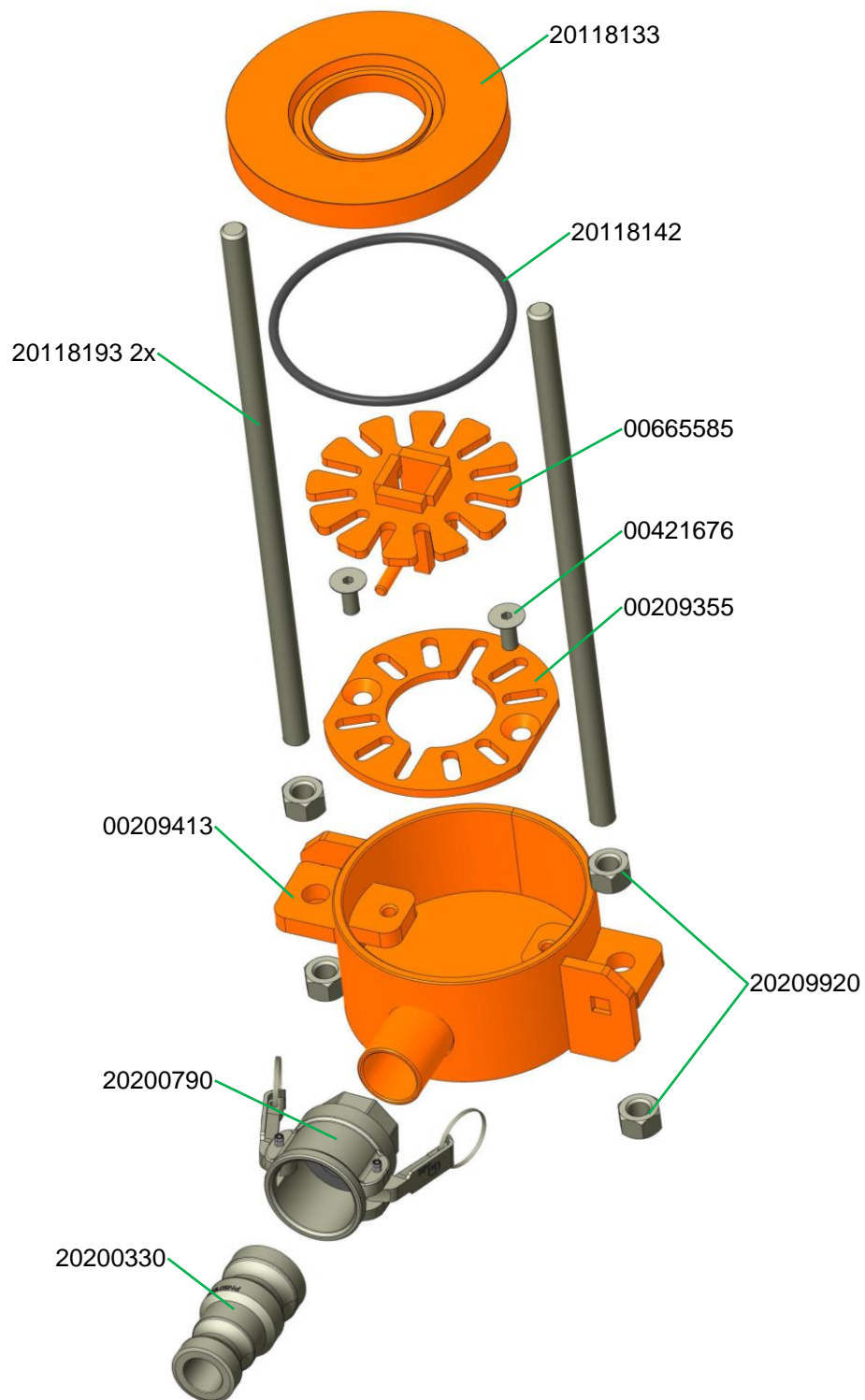
Hinweis: Mischflügel 35 mm für Nachmischer notwendig
 Note: Mixing blade 35 mm necessary for agitator

ROTOMIX D-Pumpe, Art.-Nr. 00767641
ROTOMIX D-pump, part number 00767641



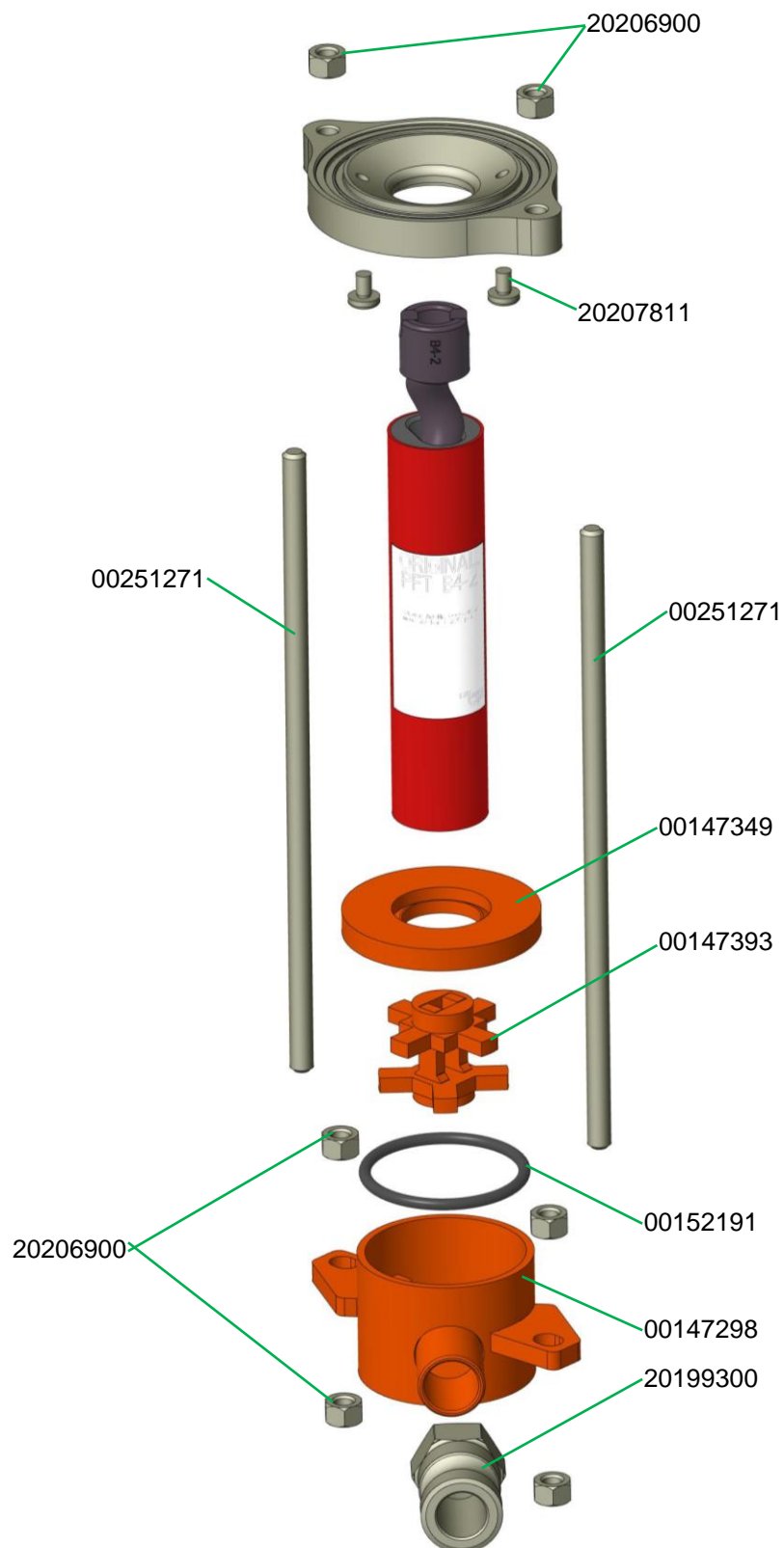
Hinweis: Mischflügel 25 mm für Nachmischer notwendig
Note: Mixing blade 25 mm necessary for agitator

ROTOMIX disc D-Pumpe, Art.-Nr. 00767745
 ROTOMIX disc D-pump, part number 00767745

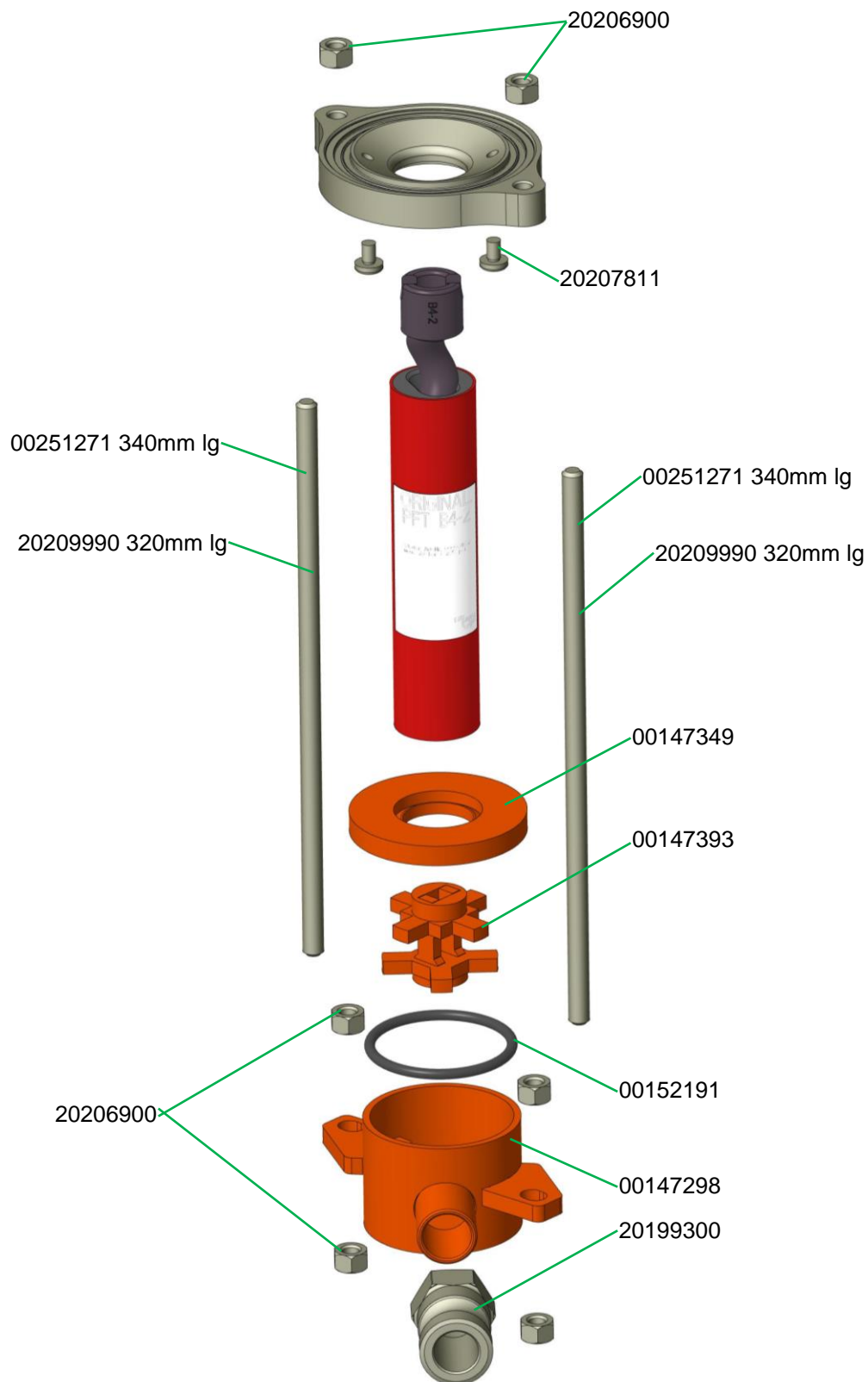


Hinweis: Mischflügel 25 mm für Nachmischer notwendig
 Note: Mixing blade 25 mm necessary for agitator

ROTOMIX B-Pumpe für RITMO L plus, Art.-Nr. 00638072
 ROTOMIX B-pump for RITMO L plus, part number 00638072



ROTOMIX B-Pumpe 1,5 Stufen, Art.-Nr. 00251139
 ROTOMIX B-pump 1.5 steps, part number 00251139



PFT – ALWAYS AT YOUR SITE



Knauf PFT GmbH & Co. KG
Postfach 60 97343 Iphofen
Einersheimer Straße 53 97346 Iphofen
Deutschland

Telefon +49 9323 31-760
Telefax +49 9323 31-770
Technische Hotline +49 9323 31-1818
info@pft.net
www.pft.net