



Ersatzteilliste / Spare parts list

Containermischpumpe CMP 4.0 - 00627857



© Knauf PFT GmbH & Co. KG
Postfach 60 97343 Iphofen
Einersheimer Straße 53 97346 Iphofen
Deutschland

Telefon +49 9323 31-760
Telefax +49 9323 31-770
Technische Hotline +49 9323 31-1818

info@pft.net
www.pft.net

Motorflansch CMP 4.0 schwenkbar RAL9003 Artikelnummer 00628865	5
Motor flange CMP 4.0 swivelling RAL9003 item number 00628865	5
Mischrohr CMP 4.0 RAL9003 Artikelnummer 00628868	6
Mixing tube CMP 4.0 RAL9003 item number 00628868	6
Rahmen CMP 4.0, Siloanschluss 250 mm RAL9003 Artikelnummer 00628863	7
Frame for CMP 4.0, silo connection 250 mm RAL9003 item number 00628863	7
Dosierrohr CMP 4.0 RAL9003 Artikelnummer 00628867	8
Dosing tube CMP 4.0 RAL9003 item number 00628867	8
Deckel Sackeinfülltrichter CMP 4.0 RAL9003	9
Filling hopper cover for bagged material for CMP 4.0 RAL9003	9
Getriebemotor 7,5 kW mit Abdichteinheit CMP 4.0 Artikelnummer 00628870	10
Gear motor 7,5 kW with sealing unit CMP 4.0 item number 00628870	10
Pumpenbehälter CMP 4.0 Artikelnummer 00684014	11
Pump hopper CMP 4.0 item number 00684014	11
Pumpeneinheit CMP 4.0 Artikelnummer 00628862	12
Pump unit CMP 4.0 item number 00628862	12
Steuerschrank CMP 4.0 VA	13
Control box CMP 4.0 VA	13
Luftarmatur CMP 4.0 Artikelnummer 00628080	14
Air manifold CMP 4.0 item number 00628080	14
Luftarmatur CMP 4.0 Artikelnummer 00628080	15
Air manifold CMP 4.0 item number 00628080	15
Luftarmatur CMP 4.0 Artikelnummer 00628080	16
Air manifold CMP 4.0 item number 00628080	16
Wasserarmatur CMP 4.0 Artikelnummer 00628081	17
Water manifold CMP 4.0 item number 00628081	17
Wasserarmatur CMP 4.0 Artikelnummer 00628081	18
Water manifold CMP 4.0 item number 00628081	18
Schaltschrank CMP 30 II_2.18 Artikelnummer 00627311	19
Control box CMP 30 II_2.18 item number 00627311	19

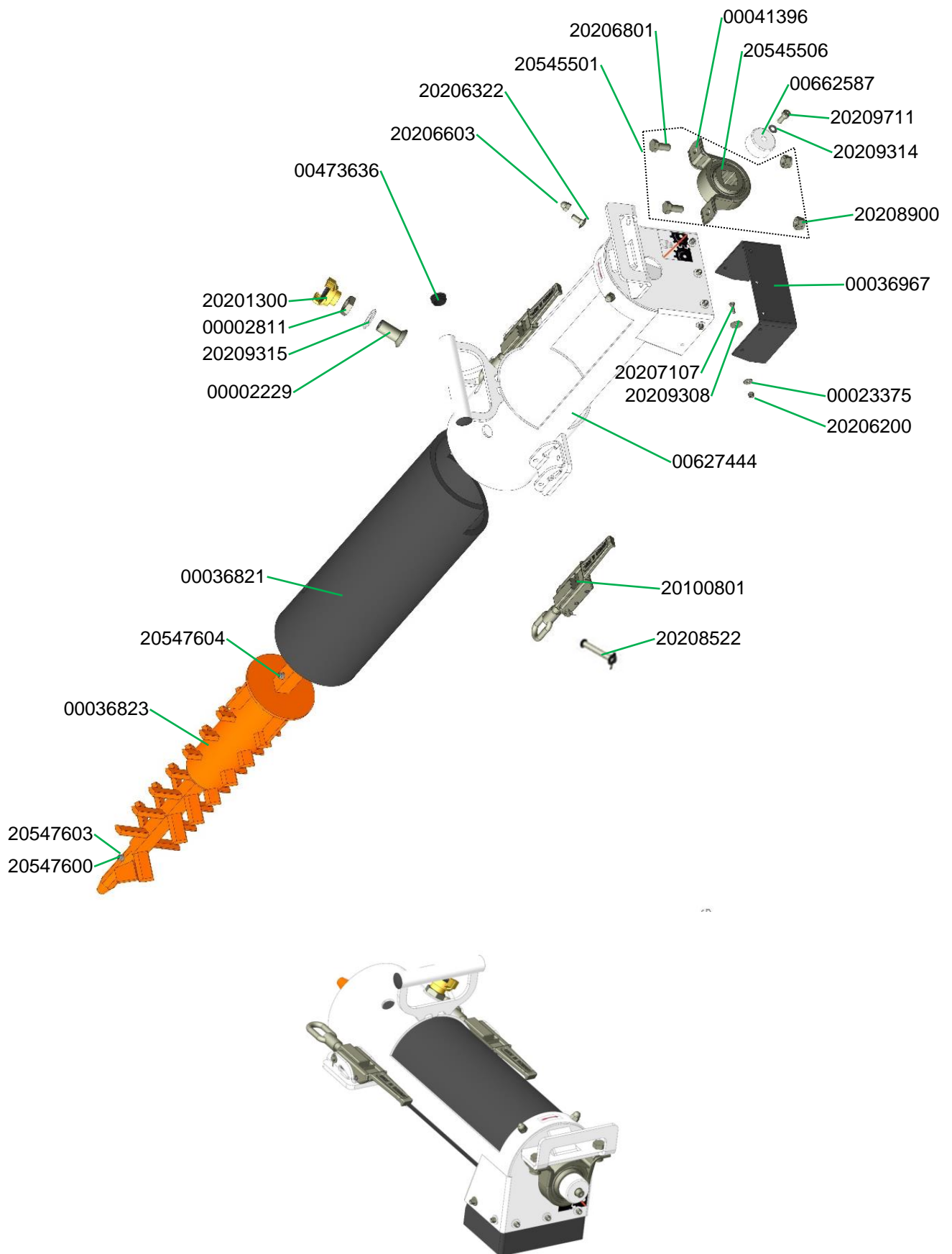
Schaltschrank CMP 30 II_2.18 Artikelnummer 00627311	20
Control box CMP 30 II_2.18 item number 00627311	20
Schaltschrank CMP 30 II_2.18 Artikelnummer 00627311	21
Control box CMP 30 II_2.18 item number 00627311	21
Schaltschrank CMP 30 II_2.18 Artikelnummer 00627311	22
Control box CMP 30 II_2.18 item number 00627311	22
Schaltschrank CMP 30 II_2.18 Artikelnummer 00627311	23
Control box CMP 30 II_2.18 item number 00627311	23
Befestigungsteile zum Anbau an Silo für CMP komplett Artikelnummer 00725299.....	24
Fastening parts for mounting on silo for CMP complete item number 00725299.....	24

Motor flange CMP 4.0 swivelling RAL9003 item number 00628865



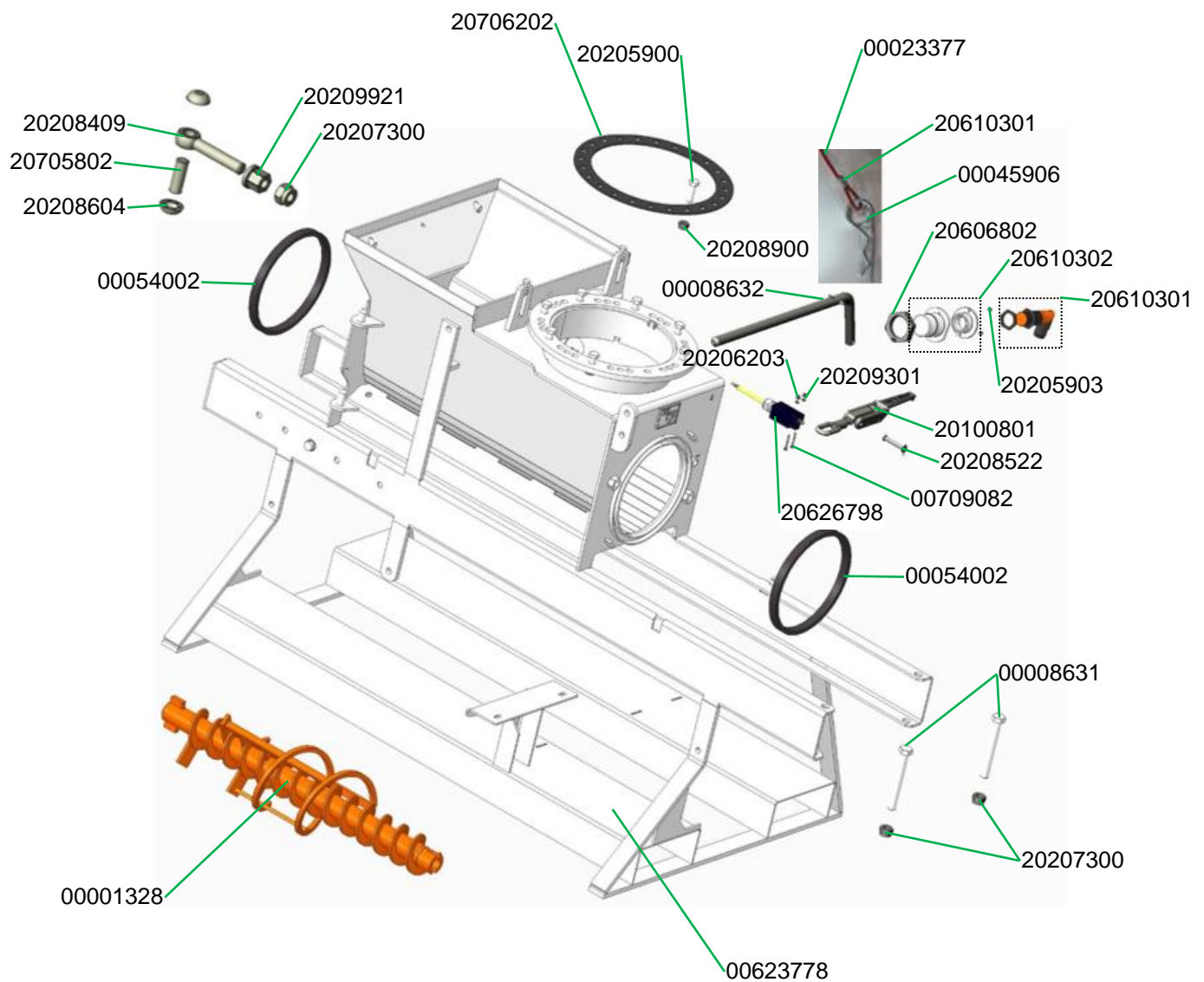
Mischrohr CMP 4.0 RAL9003 Artikelnummer 00628868

Mixing tube CMP 4.0 RAL9003 item number 00628868



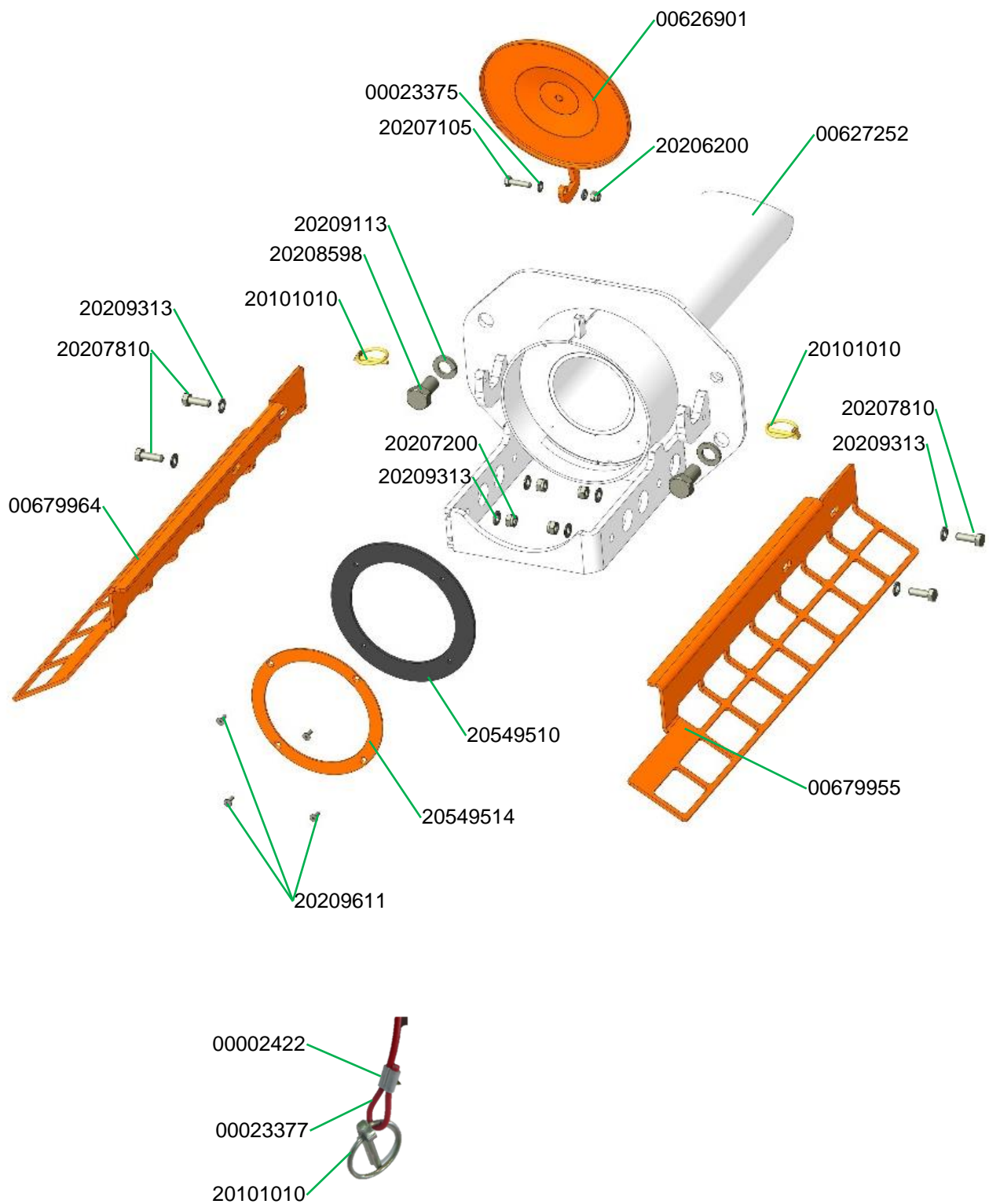
Rahmen CMP 4.0, Siloanschluss 250 mm RAL9003 Artikelnummer 00628863

Frame for CMP 4.0, silo connection 250 mm RAL9003 item number 00628863



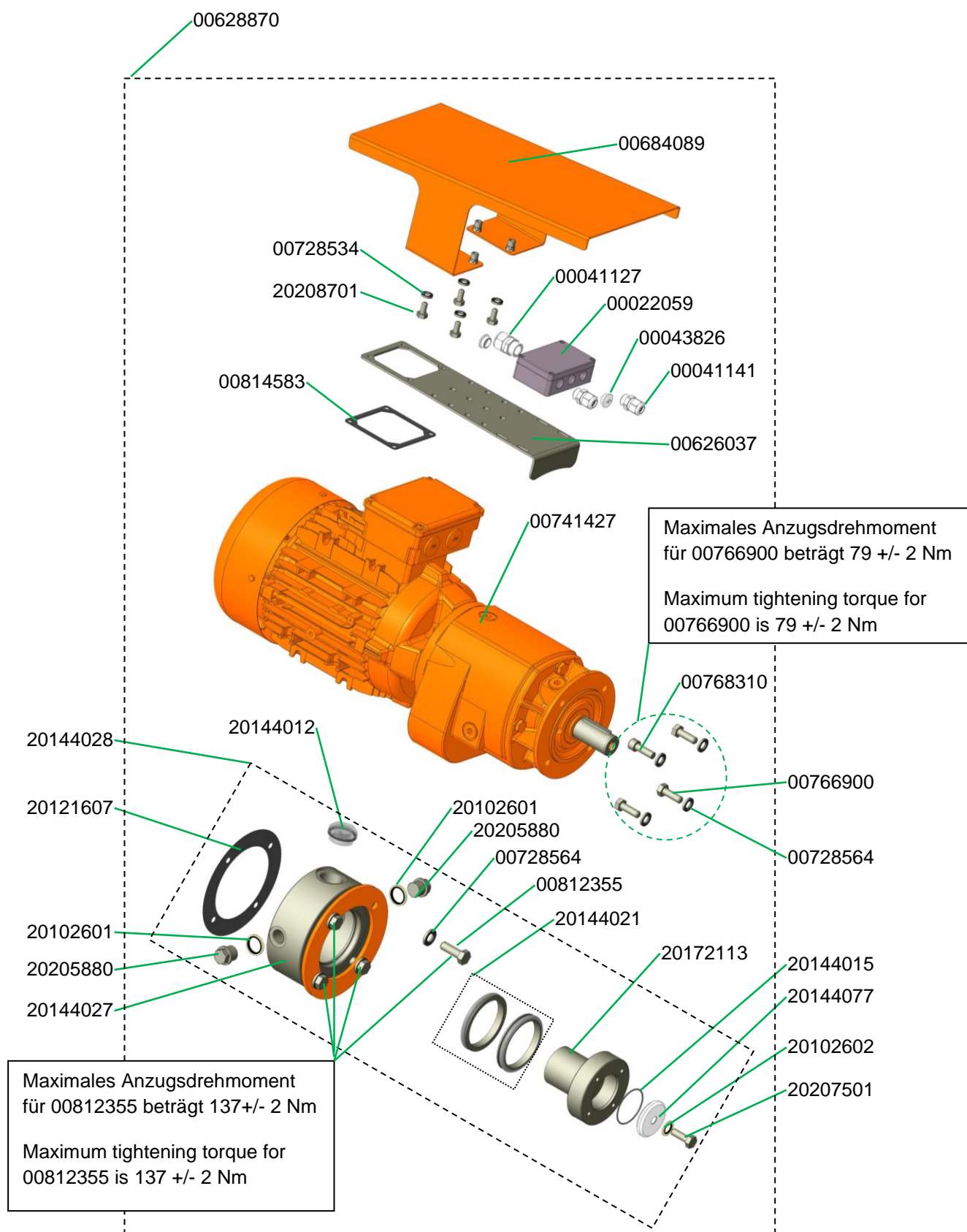
Dosierrohr CMP 4.0 RAL9003 Artikelnummer 00628867

Dosing tube CMP 4.0 RAL9003 item number 00628867



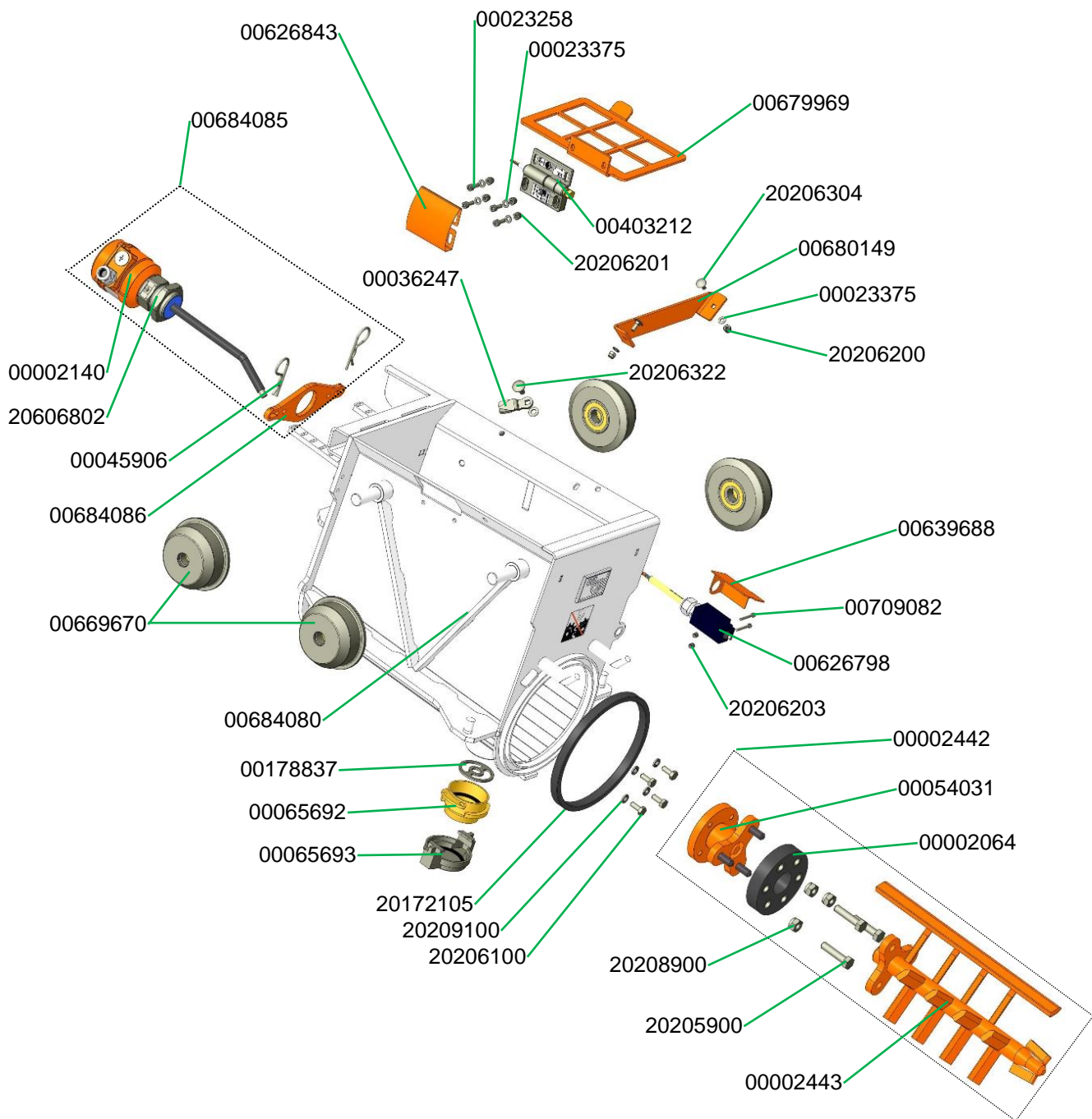
Filling hopper cover for bagged material for CMP 4.0 RAL9003





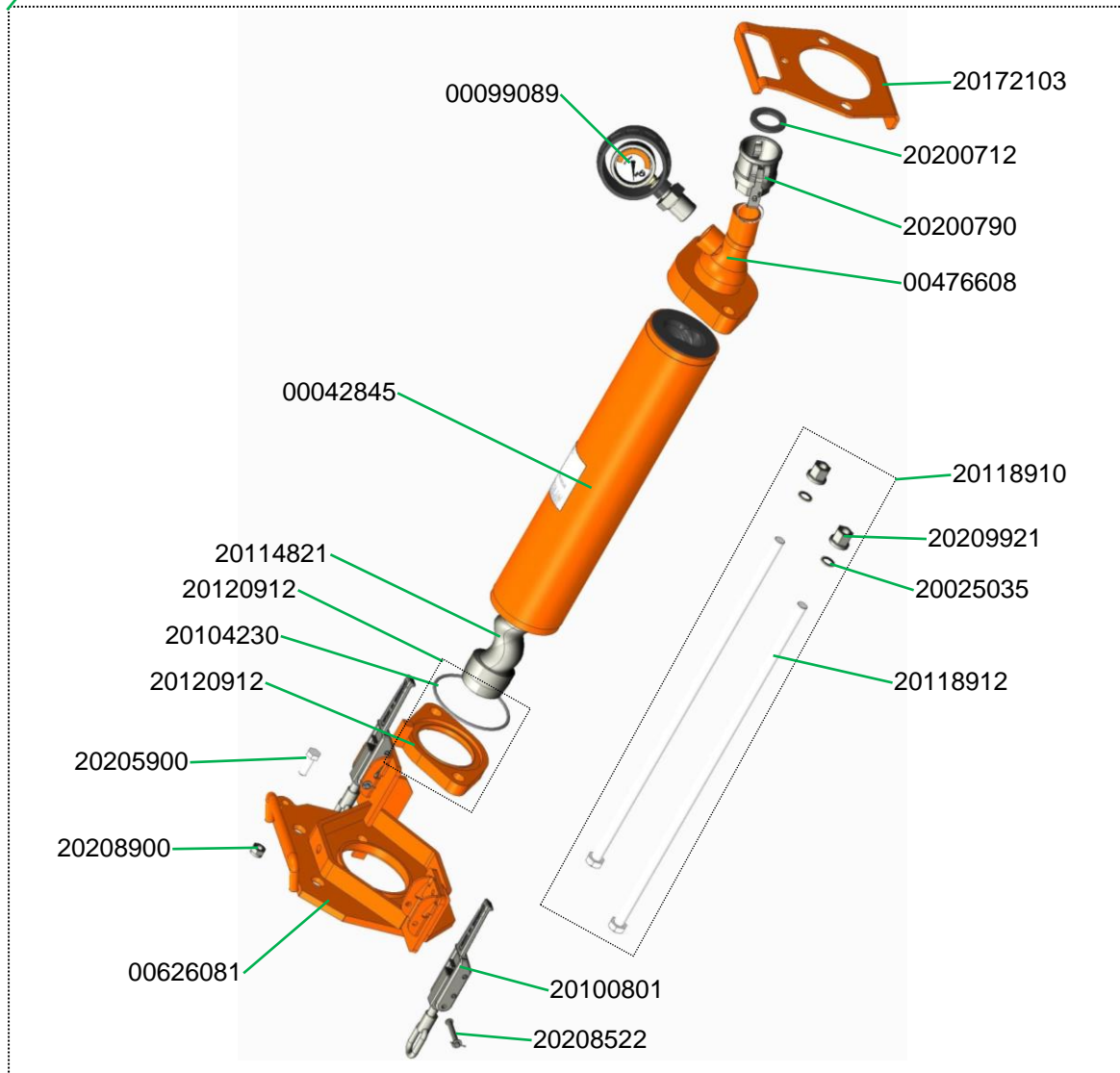
Pumpenbehälter CMP 4.0 Artikelnummer 00684014

Pump hopper CMP 4.0 item number 00684014



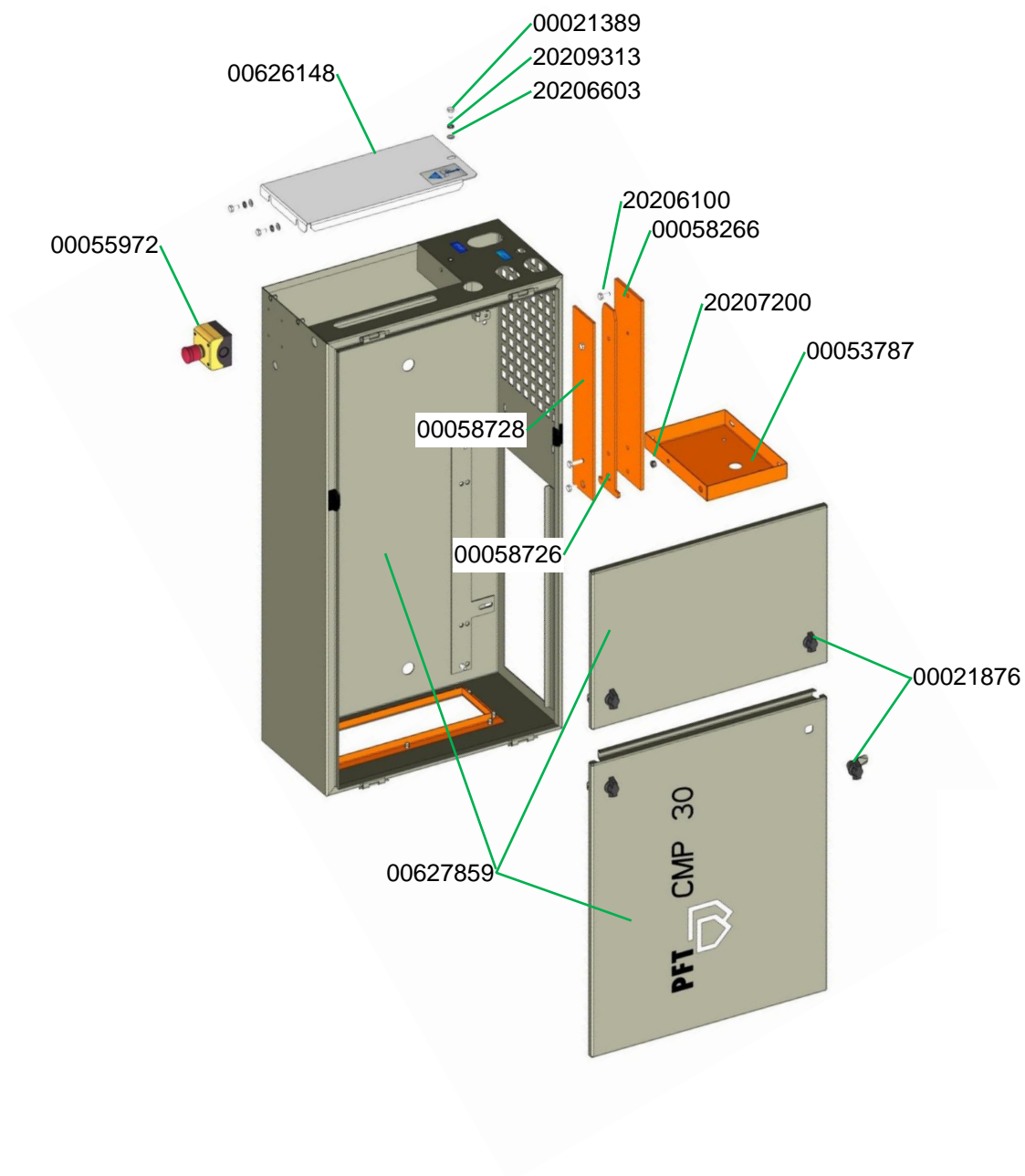
Pump unit CMP 4.0 item number 00628862

00628862



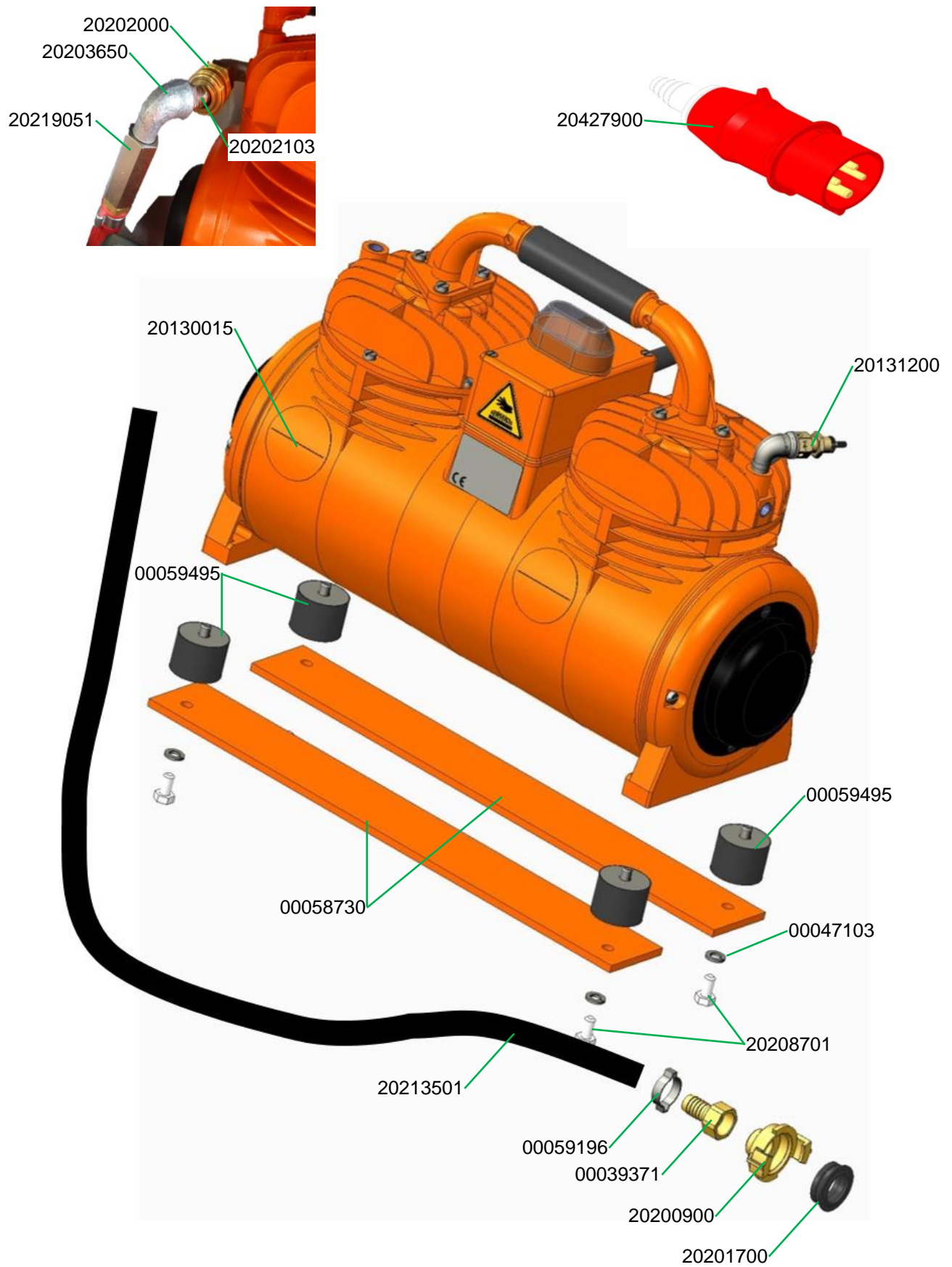
Steuerschrank CMP 4.0 VA

Control box CMP 4.0 VA



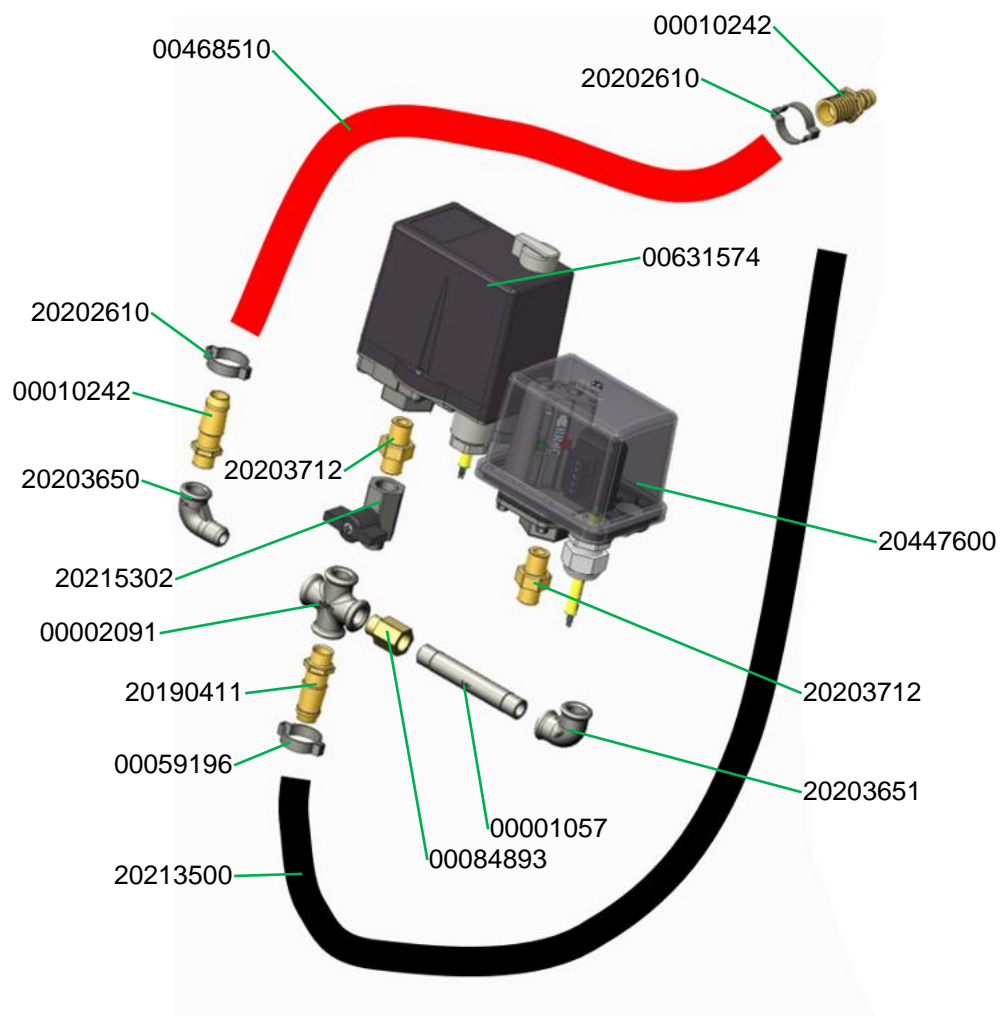
Luftarmatur CMP 4.0 Artikelnummer 00628080

Air manifold CMP 4.0 item number 00628080



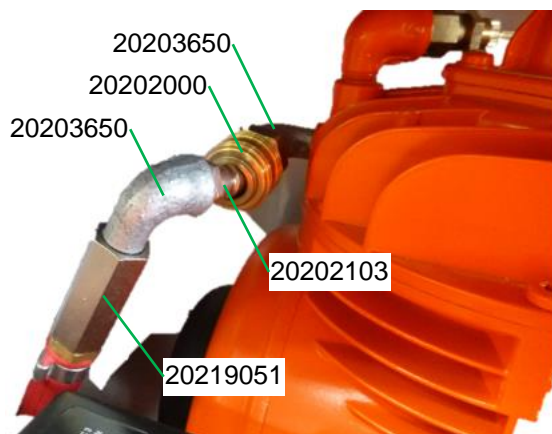
Luftarmatur CMP 4.0 Artikelnummer 00628080

Air manifold CMP 4.0 item number 00628080



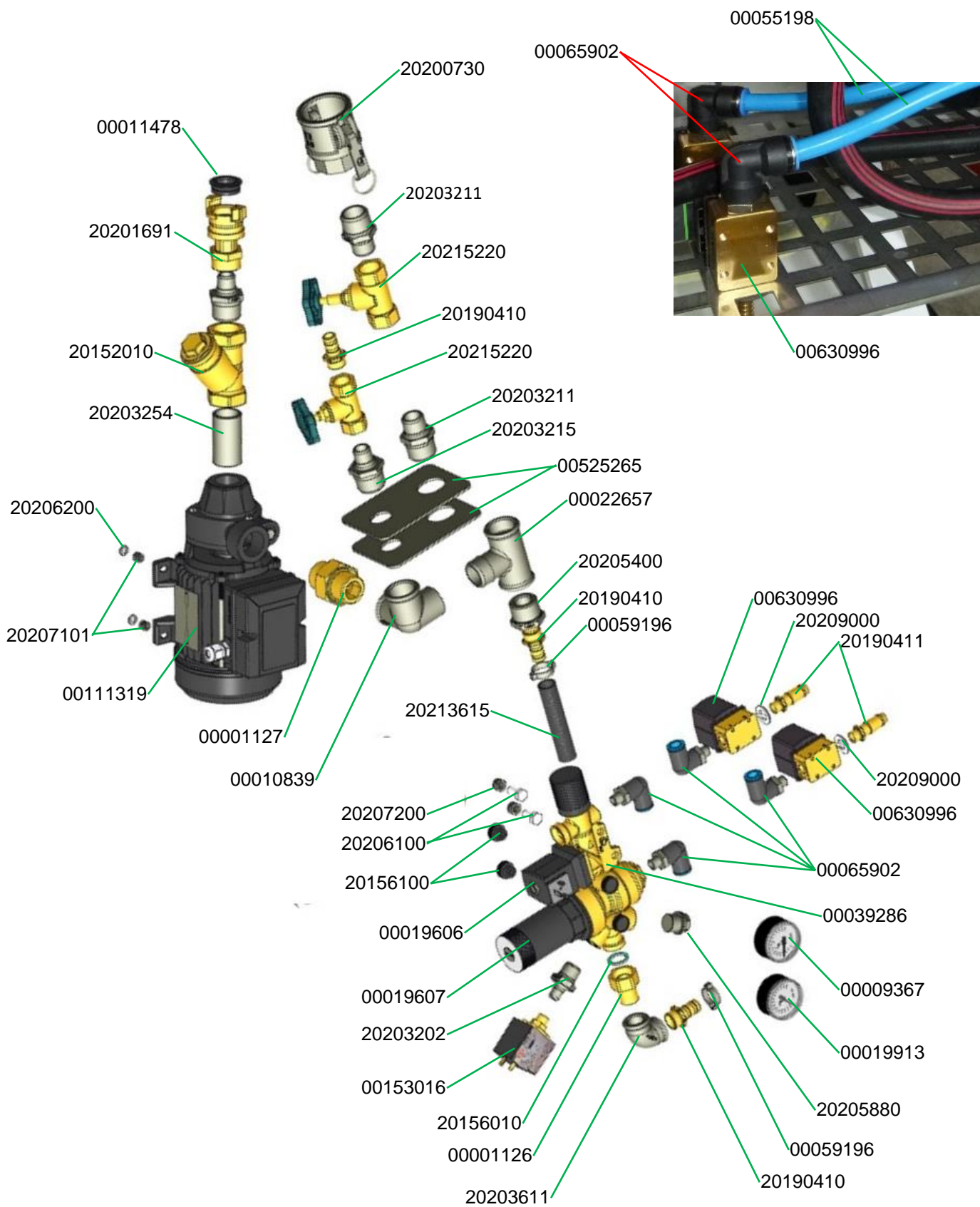
Luftarmatur CMP 4.0 Artikelnummer 00628080

Air manifold CMP 4.0 item number 00628080



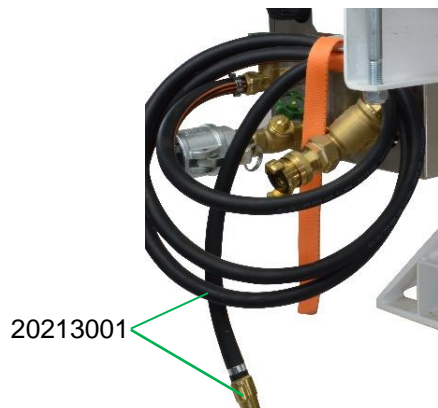
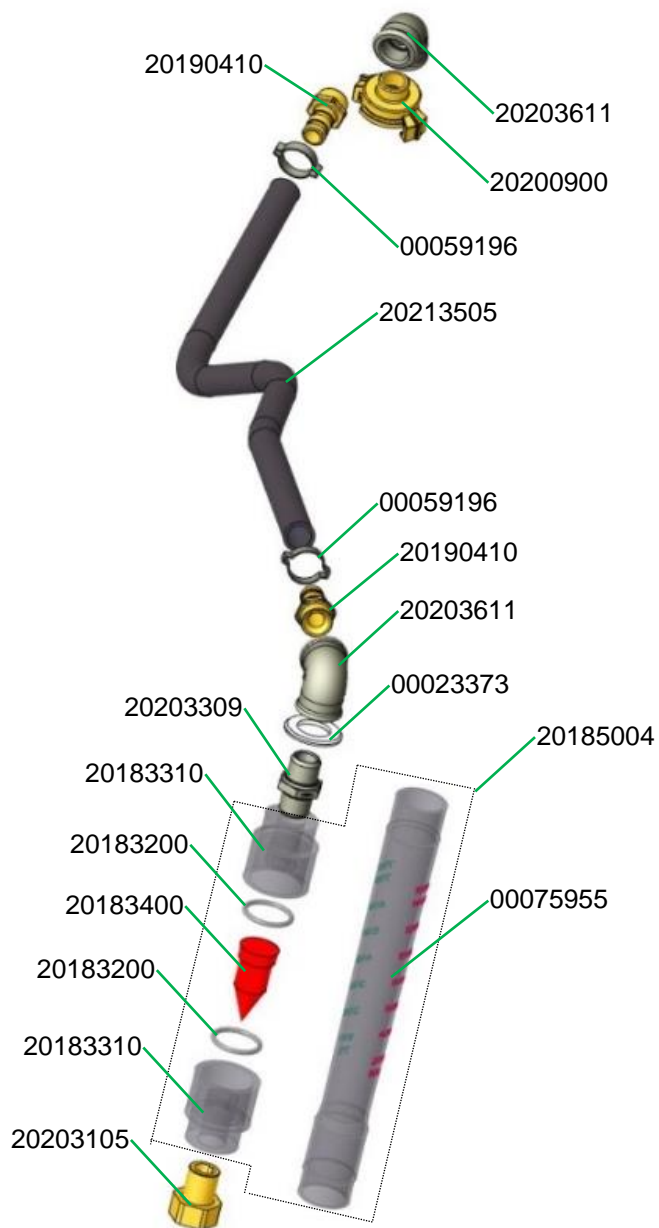
Wasserarmatur CMP 4.0 Artikelnummer 00628081

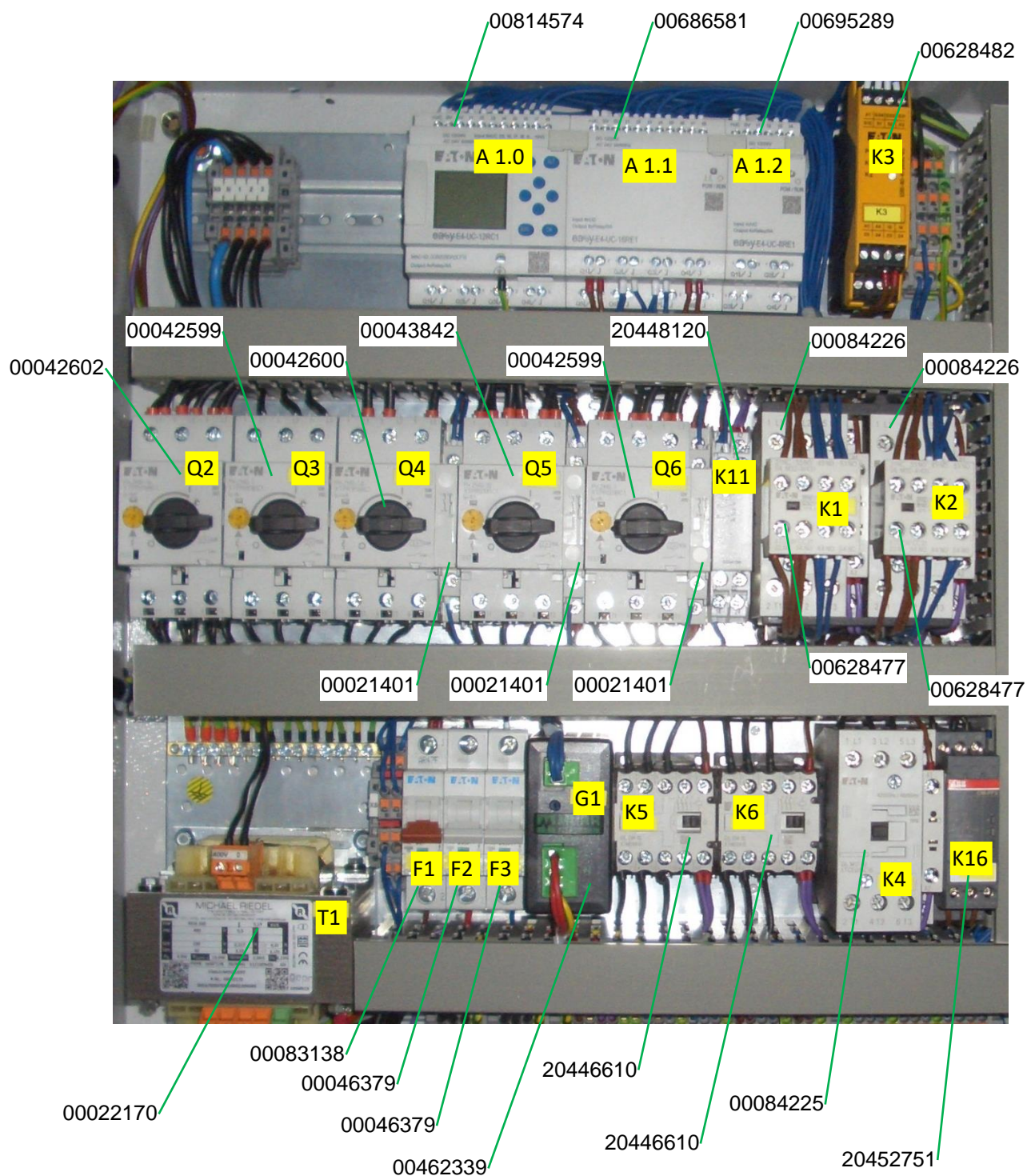
Water manifold CMP 4.0 item number 00628081



Wasserarmatur CMP 4.0 Artikelnummer 00628081

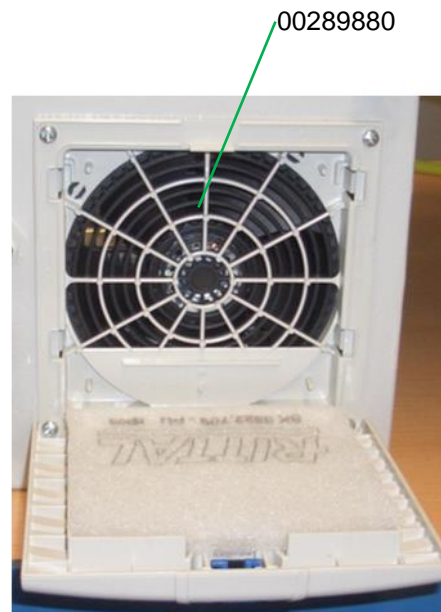
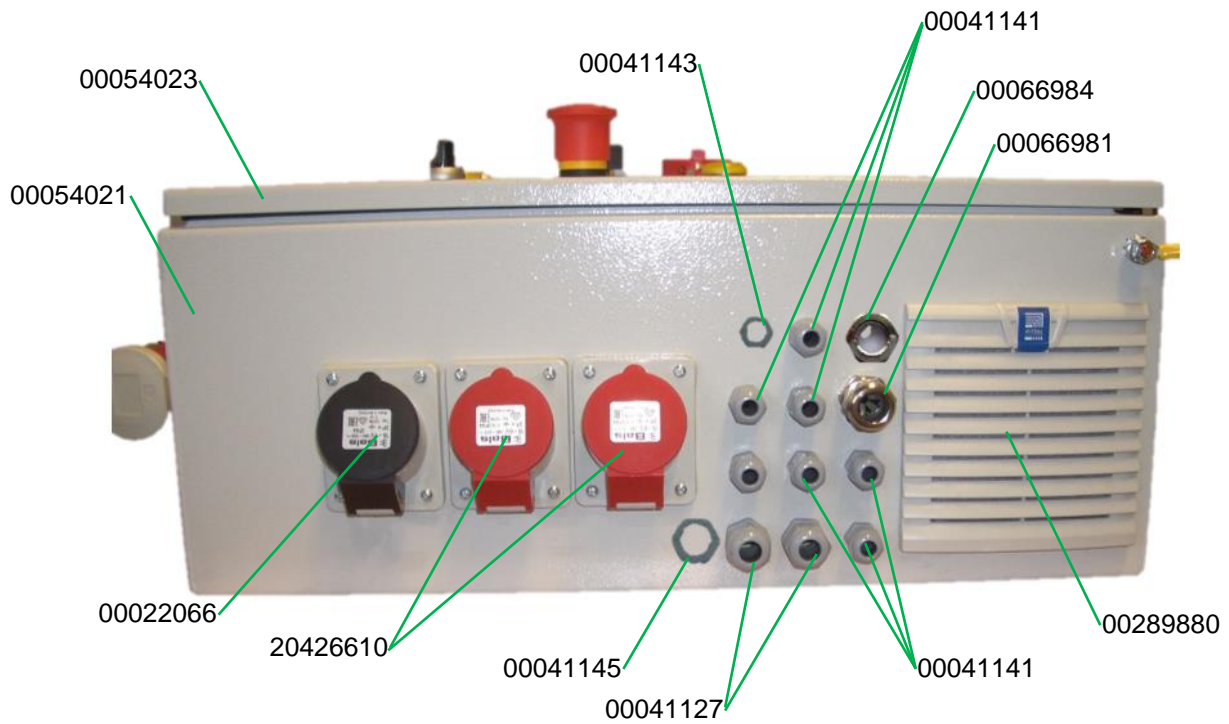
Water manifold CMP 4.0 item number 00628081





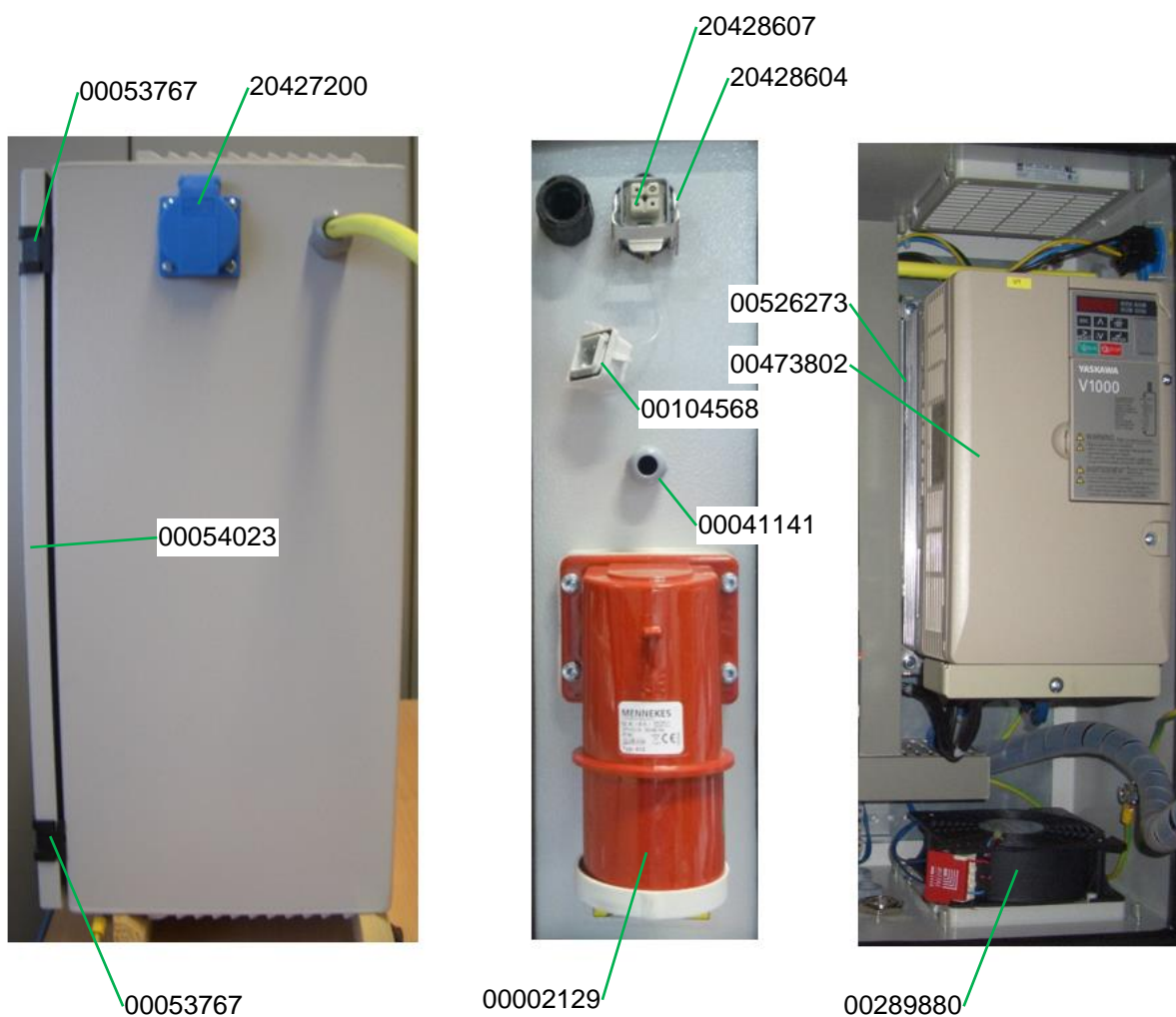
Schaltschrank CMP 30 II_2.18 Artikelnummer 00627311

Control box CMP 30 II_2.18 item number 00627311



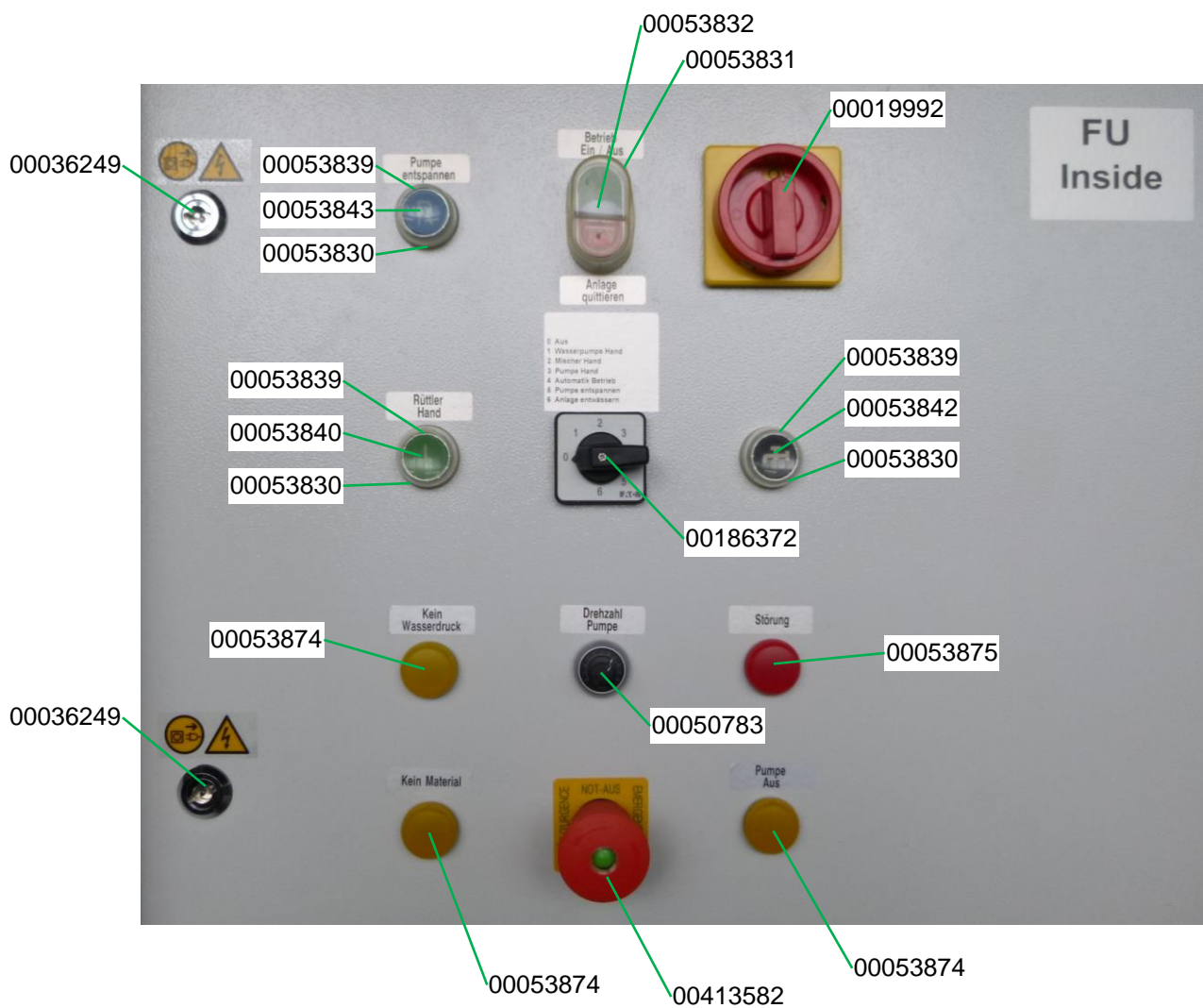
Schaltschrank CMP 30 II_2.18 Artikelnummer 00627311

Control box CMP 30 II_2.18 item number 00627311



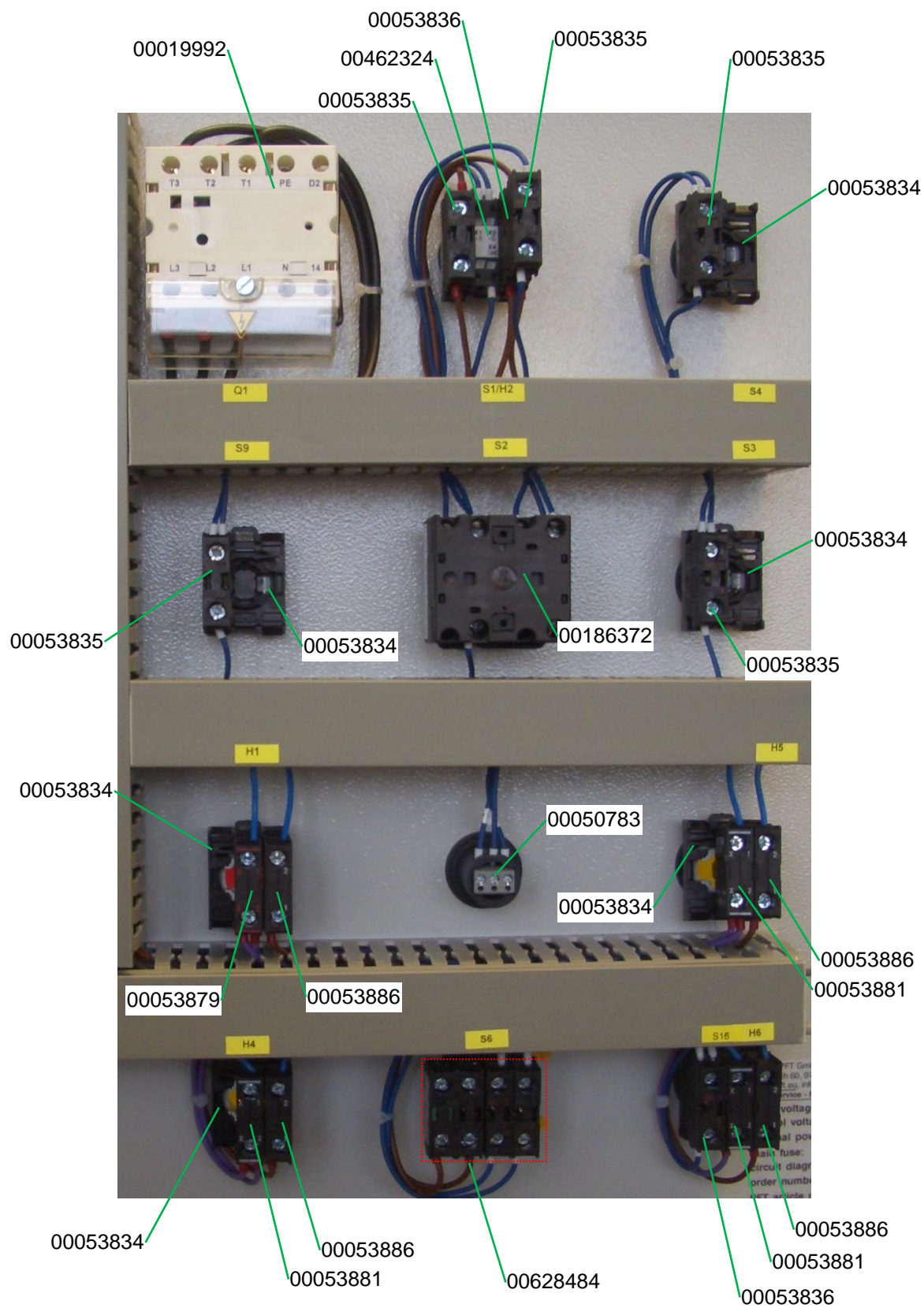
Schaltschrank CMP 30 II_2.18 Artikelnummer 00627311

Control box CMP 30 II_2.18 item number 00627311



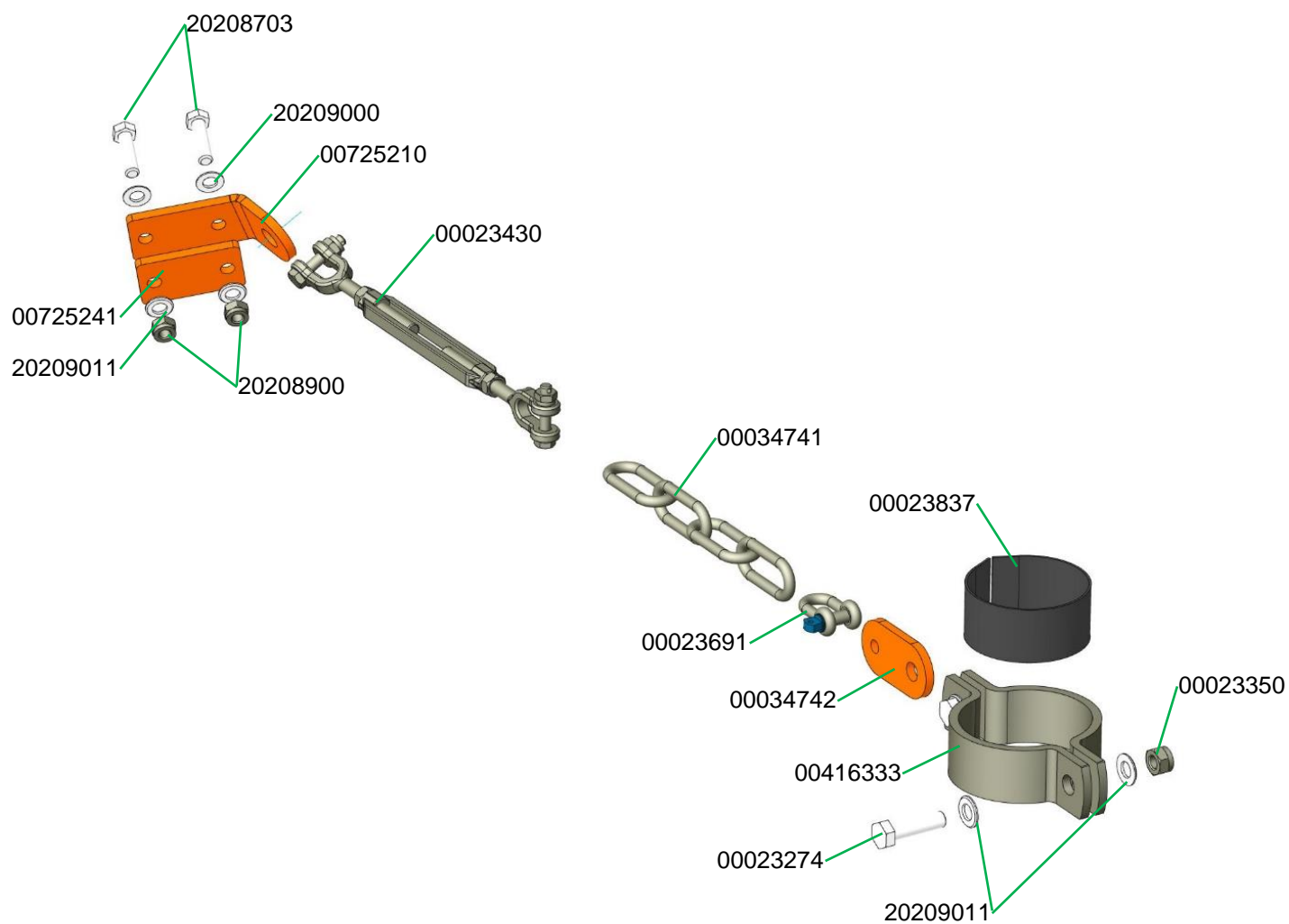
Schaltschrank CMP 30 II_2.18 Artikelnummer 00627311

Control box CMP 30 II_2.18 item number 00627311



Befestigungsteile zum Anbau an Silo für CMP komplett Artikelnummer 00725299

Fastening parts for mounting on silo for CMP complete item number 00725299



PFT – ALWAYS AT YOUR SITE



Knauf PFT GmbH & Co. KG
Postfach 60 97343 Iphofen
Einersheimer Straße 53 97346 Iphofen
Deutschland

Telefon +49 9323 31-760
Telefax +49 9323 31-770
Technische Hotline +49 9323 31-1818

info@pft.net

www.pft.net