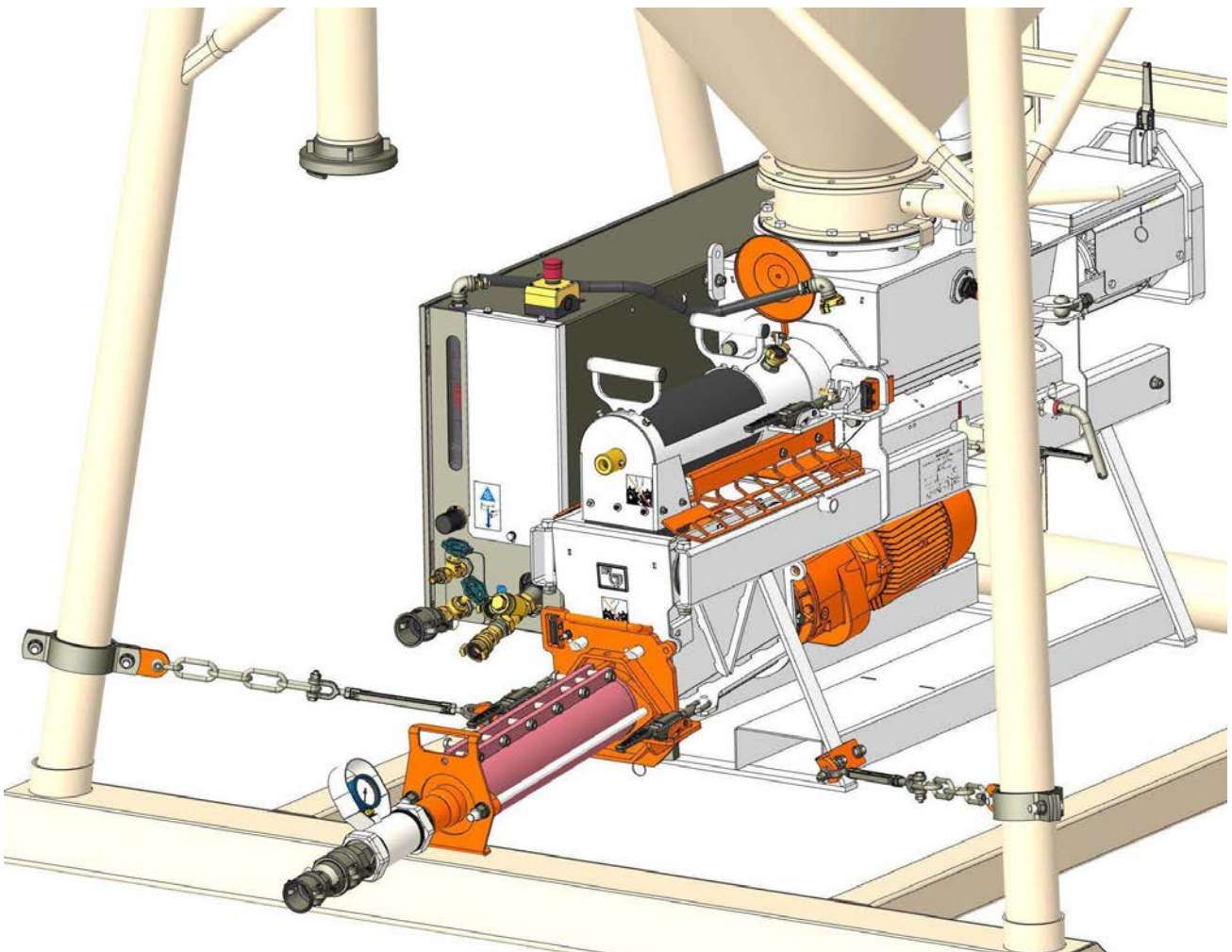




Ersatzteilliste / Spare parts list

PFT CMP 5.0



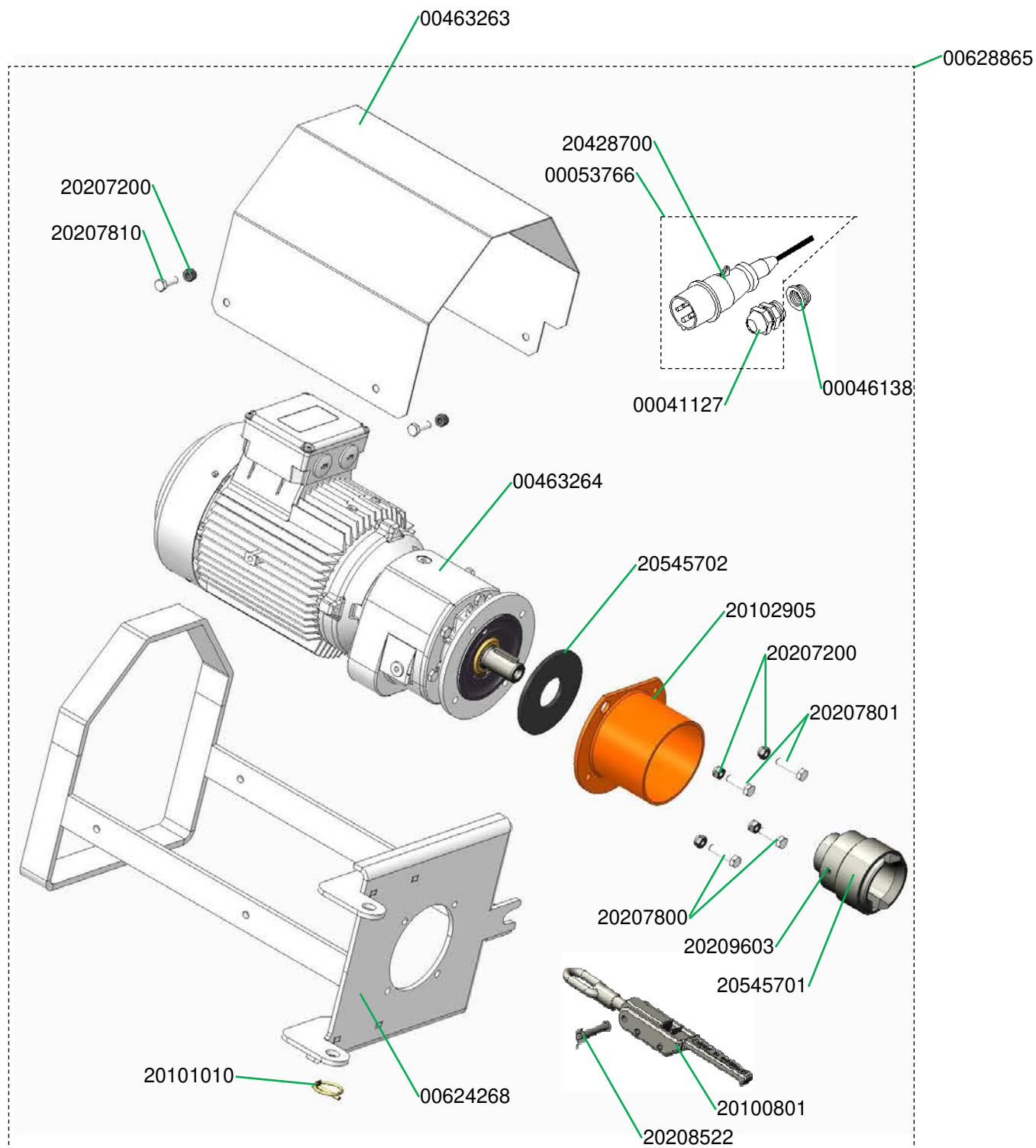
CMP 5.0, 400 V, 3 Ph, 50 Hz RAL9003 Art.-Nr. 00705056

CMP 5.0, 400 V, 3 Ph, 50 Hz RAL9003 part number 00705056

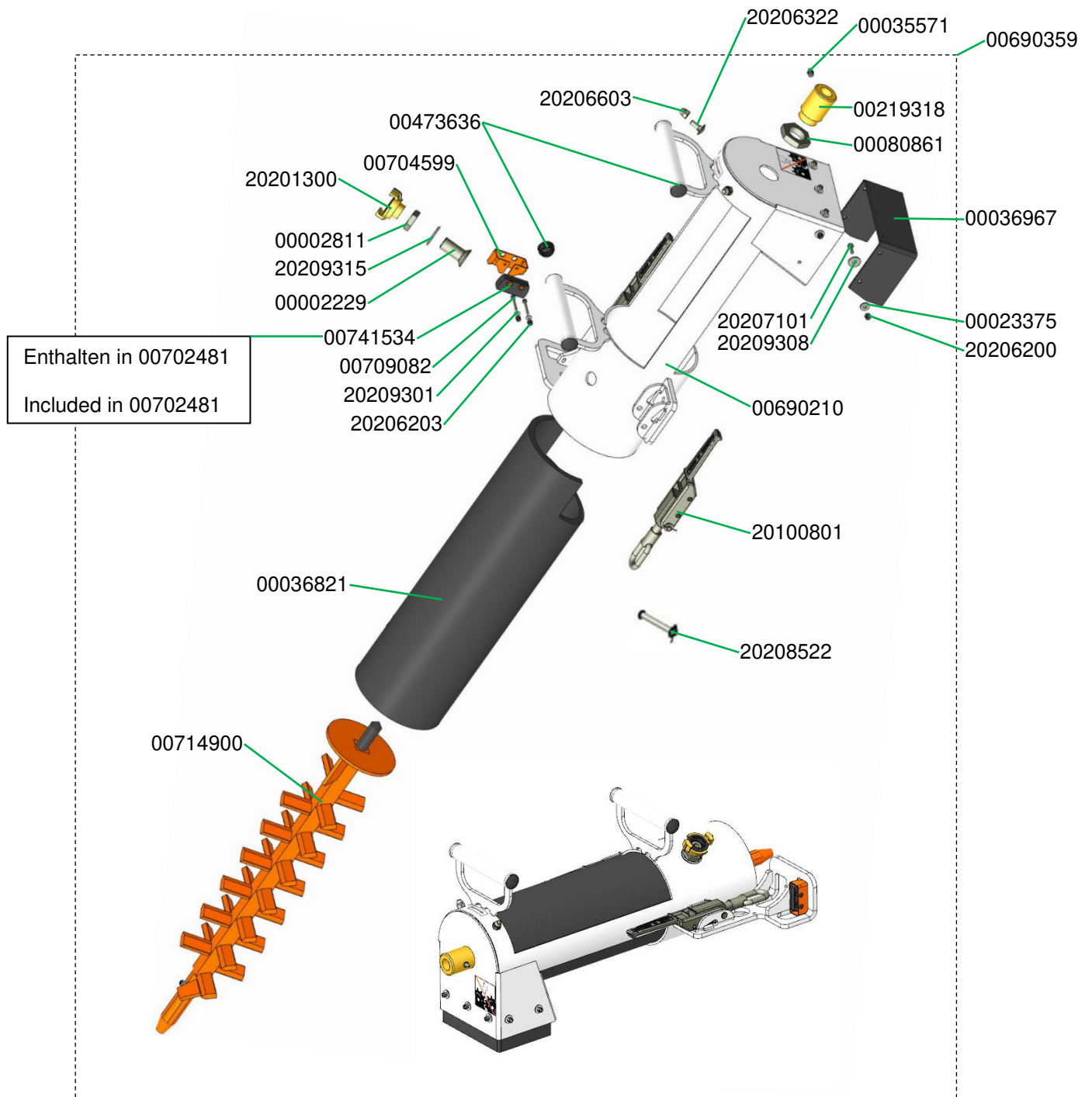
Motorflansch CMP 4.0 schwenkbar RAL9003 Art.-Nr. 00628865.....	4
Motor flange CMP 4.0 swivelling RAL9003 part number 00628865	4
Mischrohr für Rundlager CMP 5.0 RAL9003 kpl. Art.-Nr. 00690359	5
Mixing tube for round bearing CMP 5.0 RAL9003 part number 00690359	5
Rahmen CMP 5.0, Siloanschluss 250 mm RAL9003 Art.-Nr. 00709250	6
Frame for CMP 5.0, silo connection 250 mm RAL9003 part number 00709250.....	6
Dosierrohr CMP 5.0 RAL9003 Art.-Nr. 00709302	7
Dosing tube CMP 5.0 RAL9003 part number 00709302	7
Deckel Sackeinfülltrichter CMP 4.0 RAL9003	8
Filling hopper cover for bagged material for CMP 4.0 RAL9003	8
Getriebemotor 7,5 kW mit Abdichteinheit CMP 5.0 Art.-Nr. 00709725	9
Gear motor 7,5 kW with sealing unit CMP 5.0 part number 00709725.....	9
Pumpenbehälter CMP 5.0 Art.-Nr. 00709281	10
Pump hopper CMP 5.0 part number 00709281	10
Pumpeneinheit CMP 5.0 Art.-Nr. 00709280.....	11
Pump unit CMP 5.0 part number 00709280.....	11
Steuerschrank CMP 4.0 VA.....	12
Control box CMP 4.0 VA.....	12
Luftarmatur CMP 4.0 Art.-Nr. 00628080	13
Air manifold CMP 4.0 part number 00628080	13
Luftarmatur CMP 4.0 Art.-Nr. 00628080	14
Air manifold CMP 4.0 part number 00628080	14
Luftarmatur CMP 4.0 Art.-Nr. 00628080	15
Air manifold CMP 4.0 part number 00628080	15
Wasserarmatur CMP 5.0 Art.-Nr. 00771559	16
Water manifold CMP 5.0 part number 00771559.....	16
Wasserarmatur CMP 5.0 Art.-Nr. 00771559	17
Water manifold CMP 5.0 part number 00771559.....	17
Schaltschrank CMP 30 II_2.18 Art.-Nr. 00627311	18
Control box CMP 30 II_2.18 part number 00627311	18
Schaltschrank CMP 30 II_2.18 Art.-Nr. 00627311	19

Control box CMP 30 II_2.18 part number 00627311	19
Schaltschrank CMP 30 II_2.18 Art.-Nr. 00627311	20
Control box CMP 30 II_2.18 part number 00627311	20
Schaltschrank CMP 30 II_2.18 Art.-Nr. 00627311	21
Control box CMP 30 II_2.18 part number 00627311	21
Schaltschrank CMP 30 II_2.18 Art.-Nr. 00627311	22
Control box CMP 30 II_2.18 part number 00627311	22
Befestigungsteile zum Anbau an Silo für CMP komplett Art.-Nr. 00725299	23
Fastening parts for mounting on silo for CMP complete part number 00725299	23

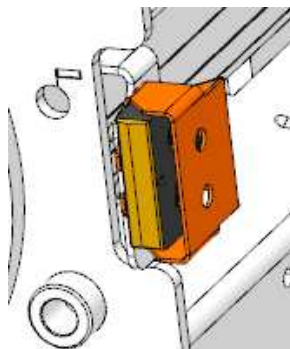
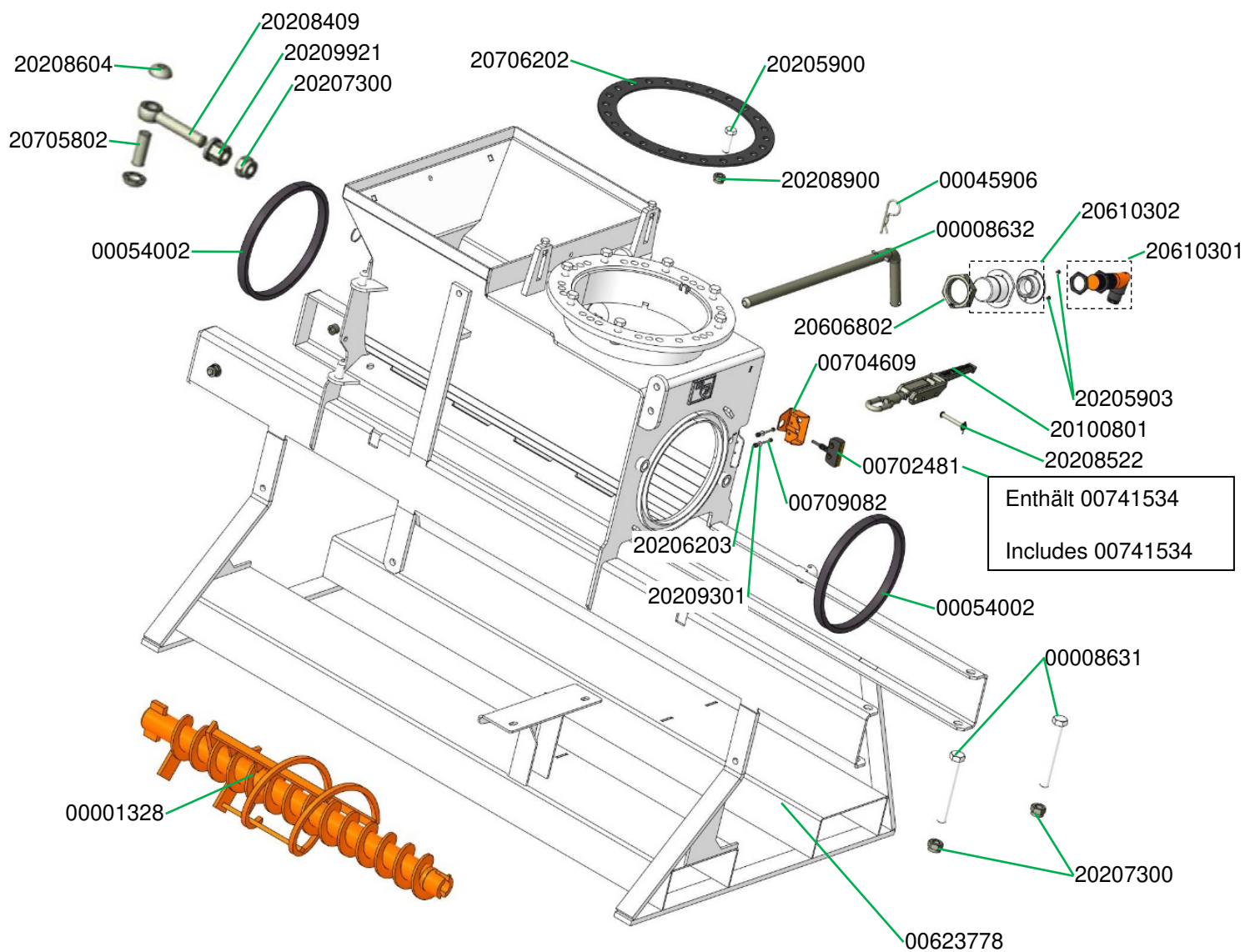
Motorflansch CMP 4.0 schwenkbar RAL9003 Art.-Nr. 00628865
Motor flange CMP 4.0 swivelling RAL9003 part number 00628865



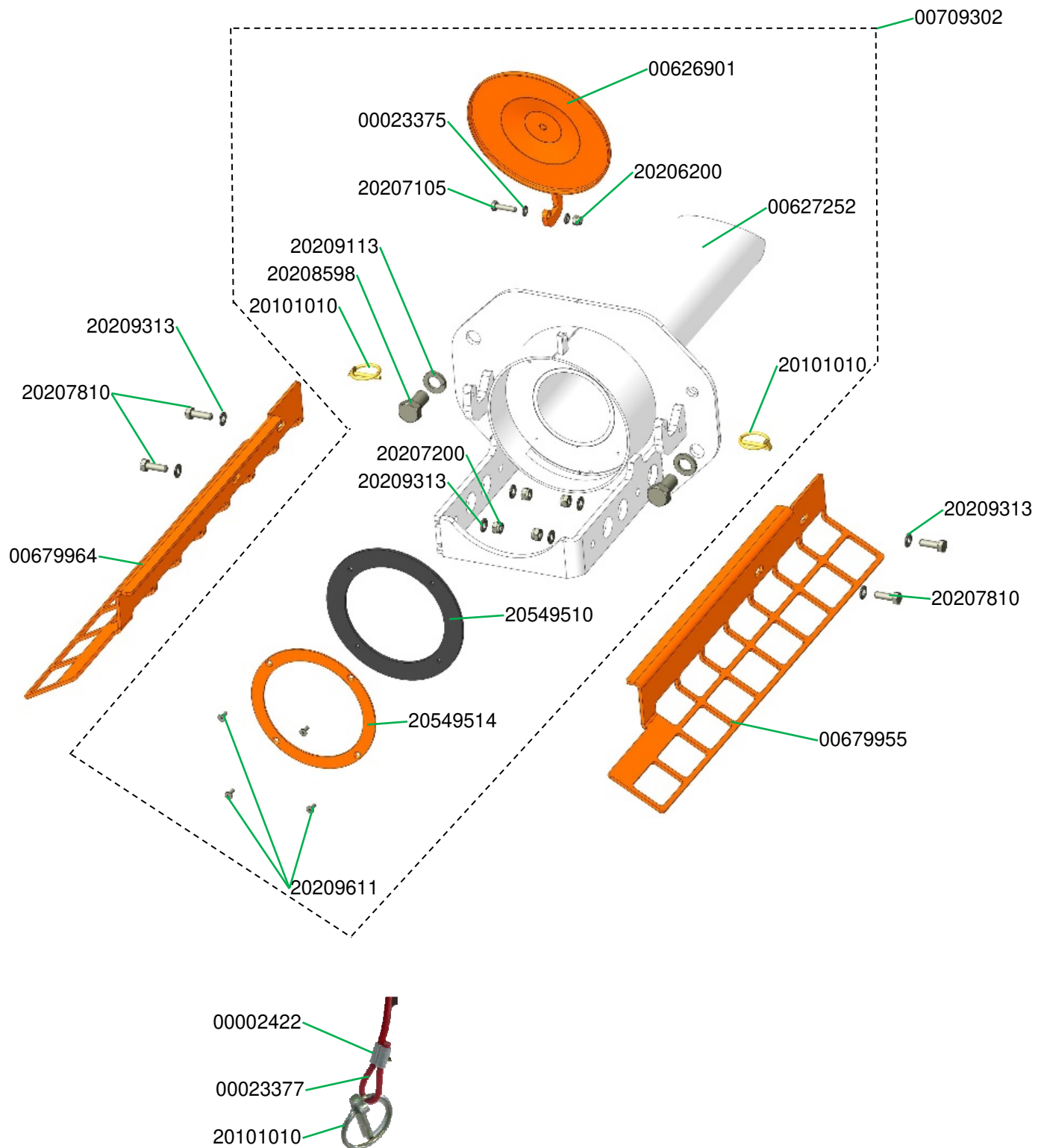
Mischrohr für Rundlager CMP 5.0 RAL9003 kpl. Art.-Nr. 00690359
 Mixing tube for round bearing CMP 5.0 RAL9003 part number 00690359



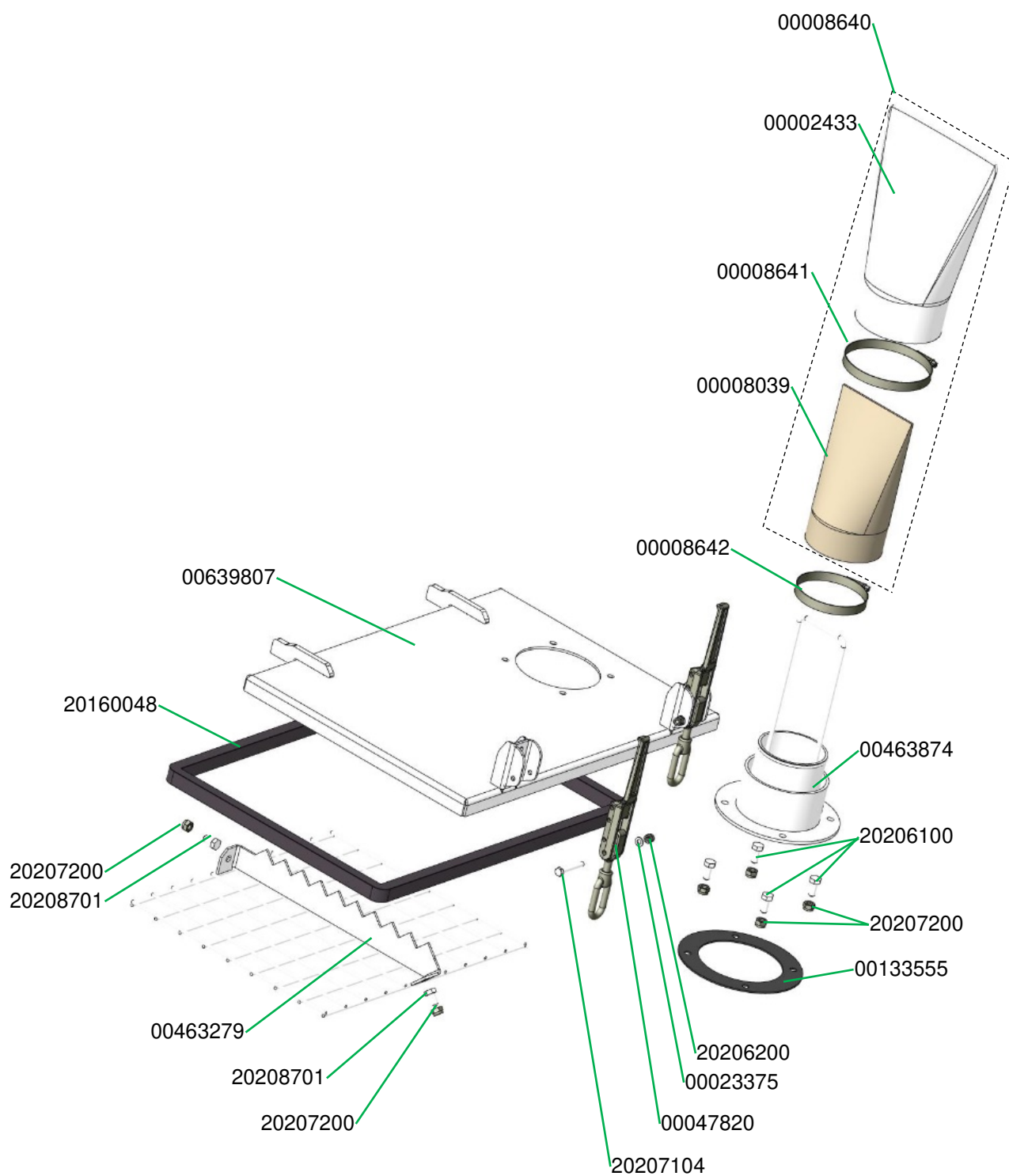
Rahmen CMP 5.0, Siloanschluss 250 mm RAL9003 Art.-Nr. 00709250
 Frame for CMP 5.0, silo connection 250 mm RAL9003 part number 00709250



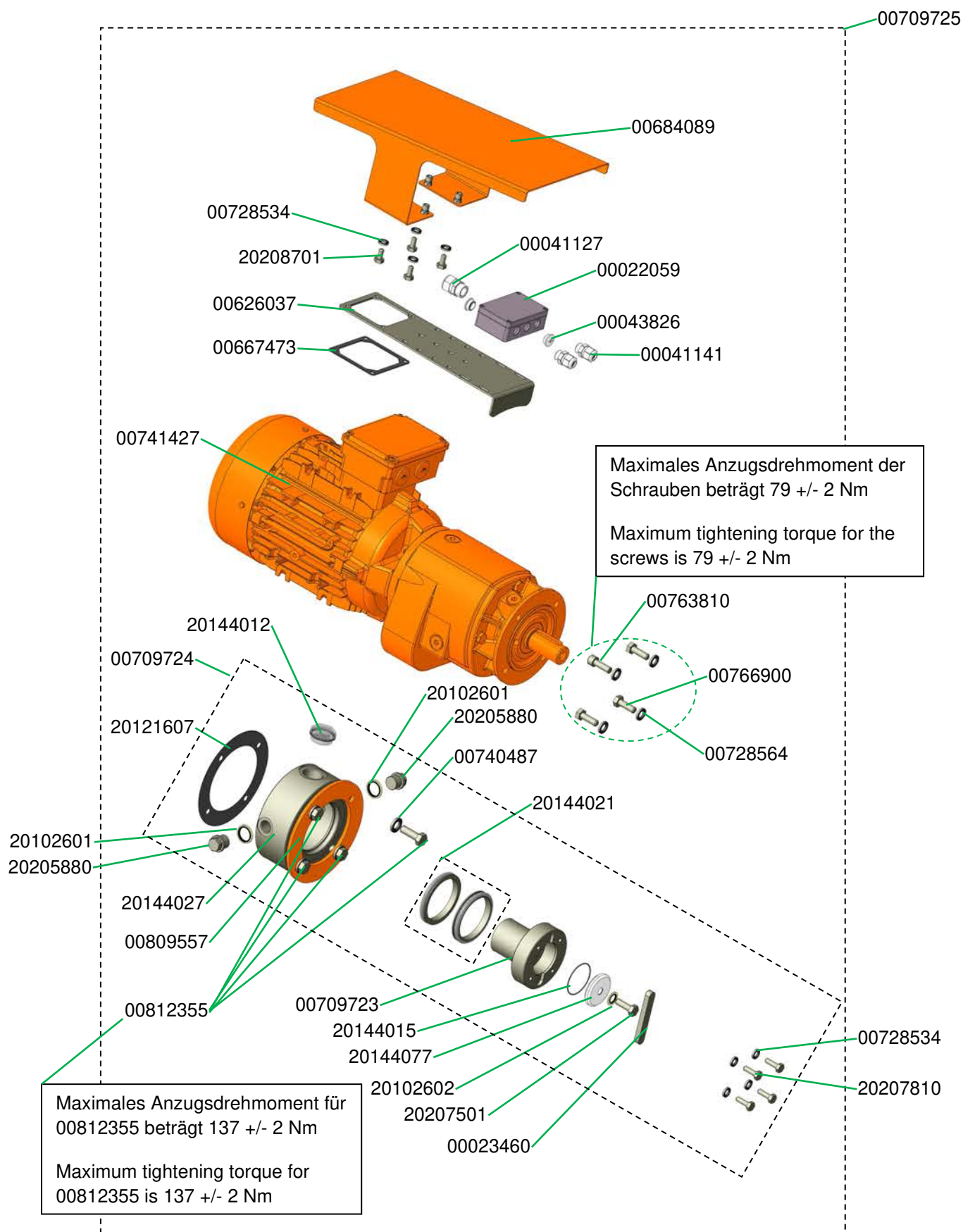
Dosierrohr CMP 5.0 RAL9003 Art.-Nr. 00709302
Dosing tube CMP 5.0 RAL9003 part number 00709302



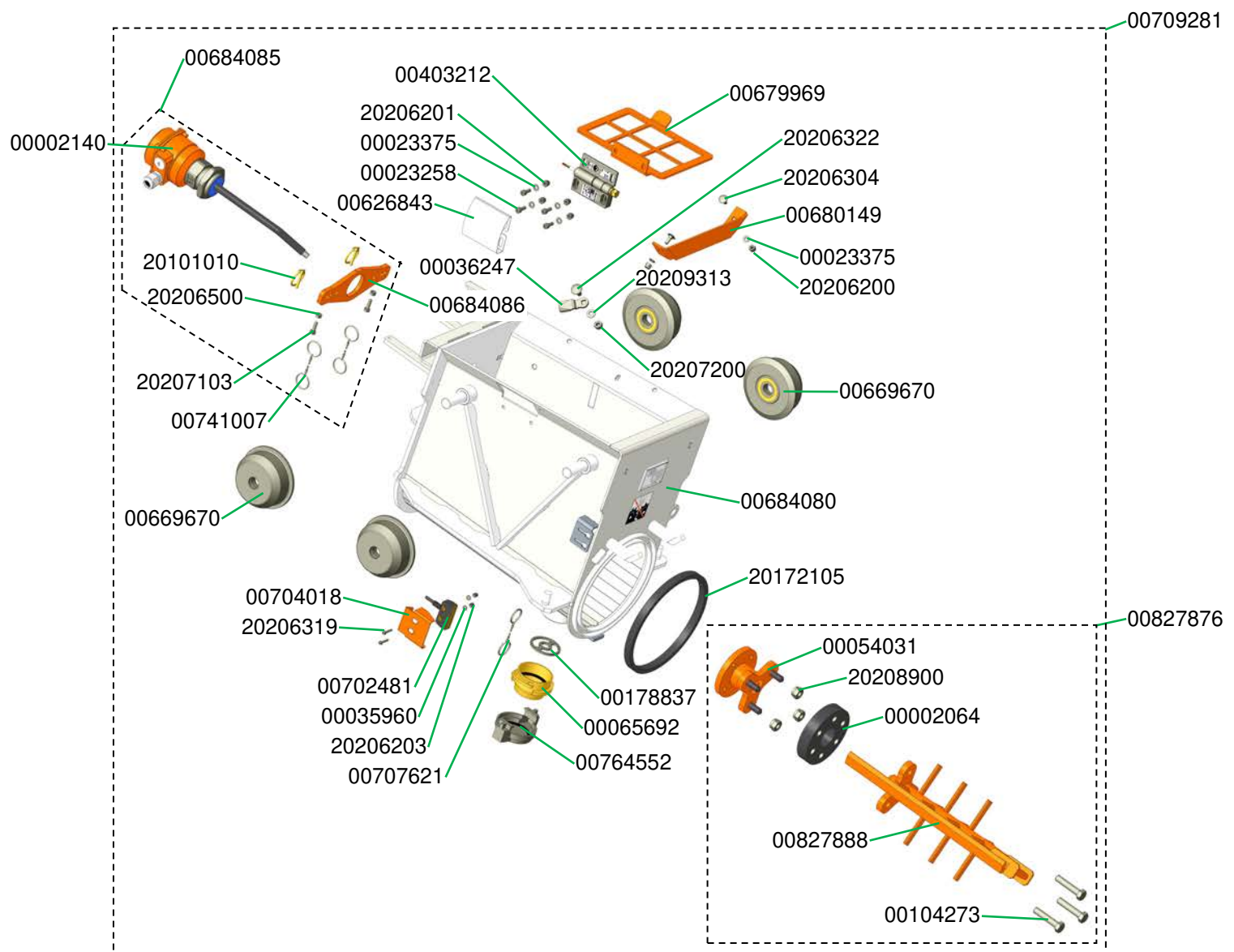
Deckel Sackeinfülltrichter CMP 4.0 RAL9003
Filling hopper cover for bagged material for CMP 4.0 RAL9003



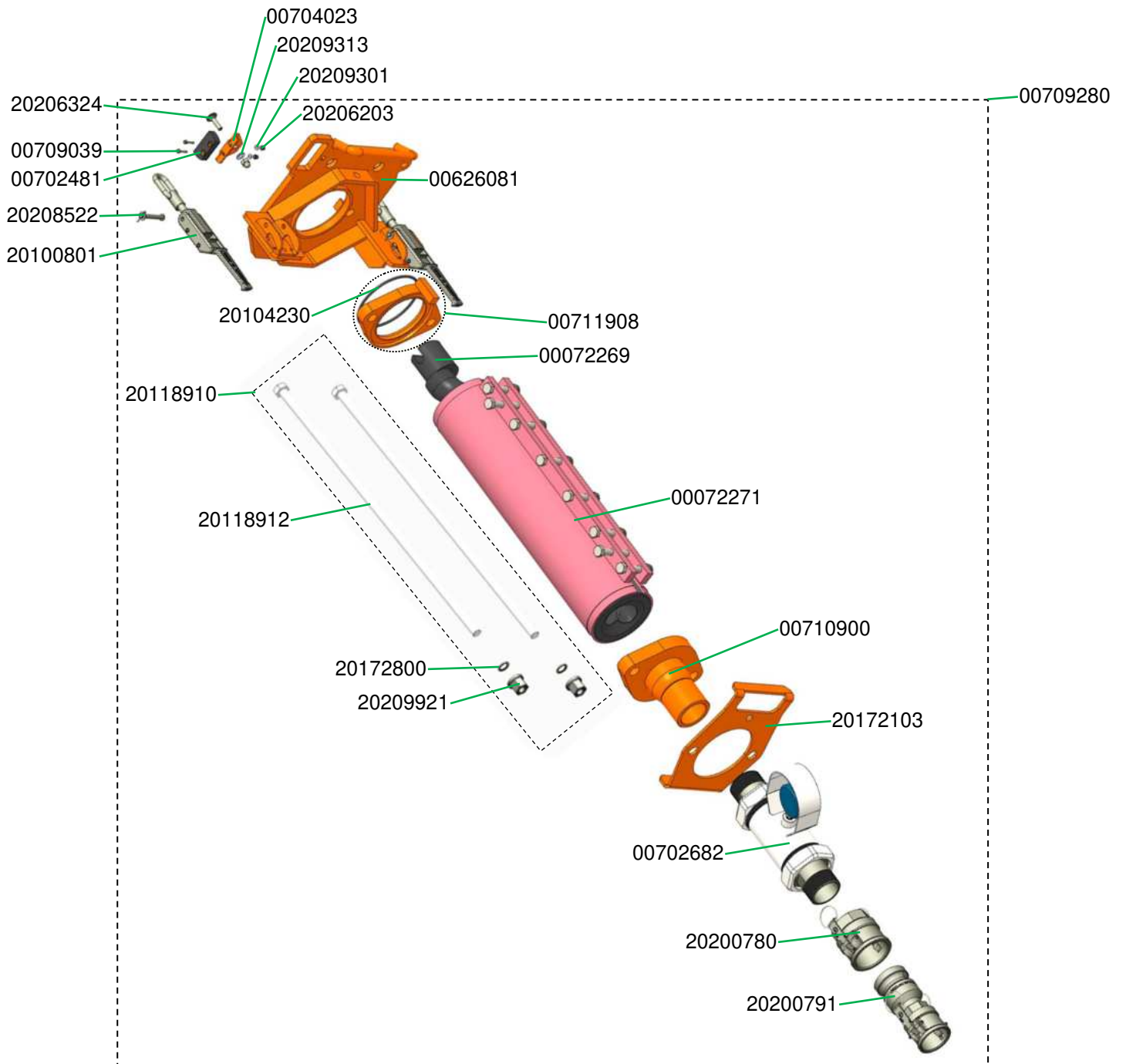
Getriebemotor 7,5 kW mit Abdichteinheit CMP 5.0 Art.-Nr. 00709725
 Gear motor 7,5 kW with sealing unit CMP 5.0 part number 00709725



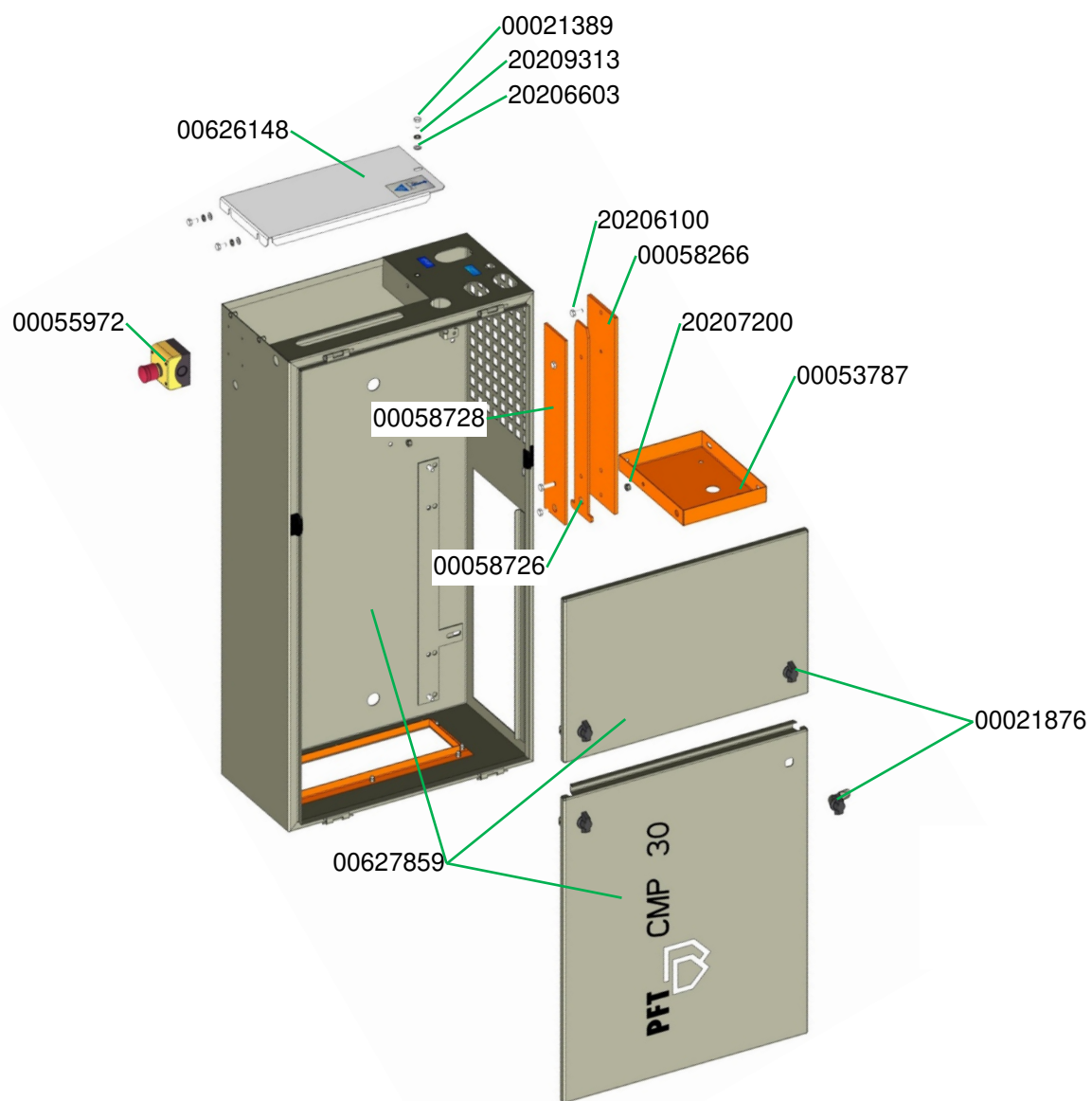
Pumpenbehälter CMP 5.0 Art.-Nr. 00709281
 Pump hopper CMP 5.0 part number 00709281



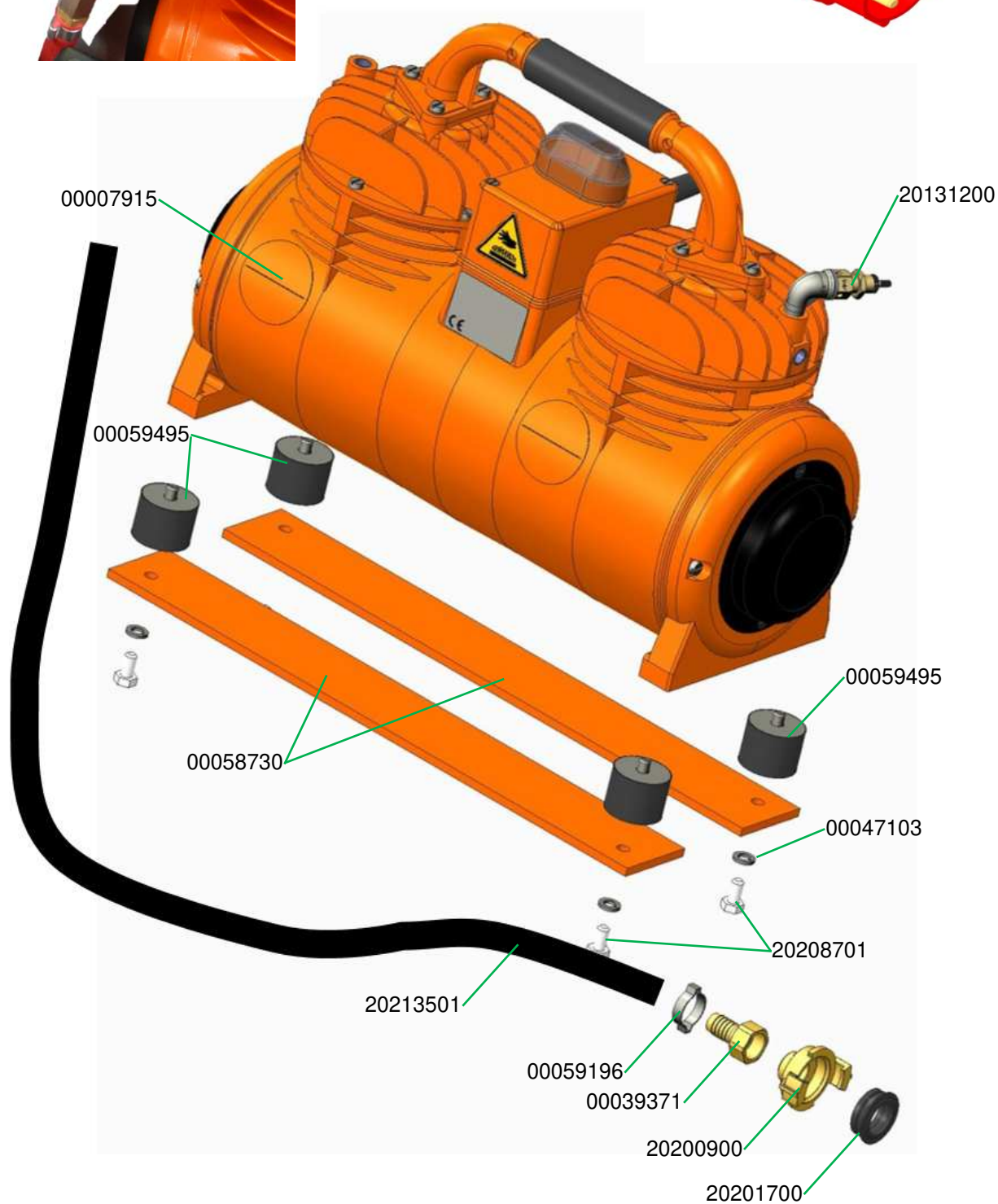
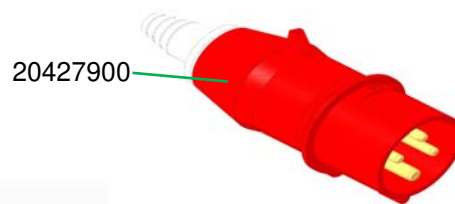
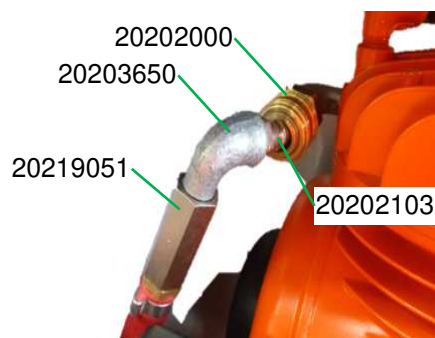
Pumpeneinheit CMP 5.0 Art.-Nr. 00709280
 Pump unit CMP 5.0 part number 00709280



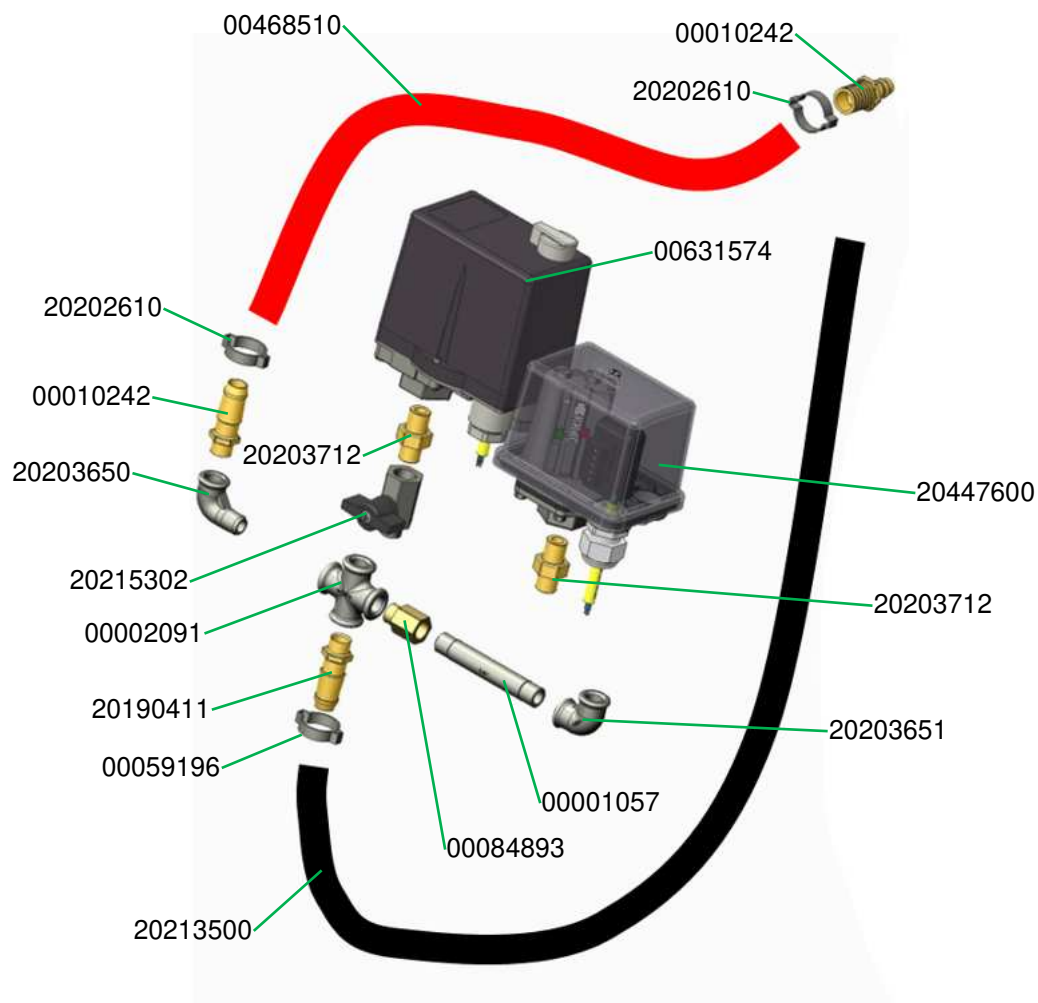
Steuerschrank CMP 4.0 VA
Control box CMP 4.0 VA



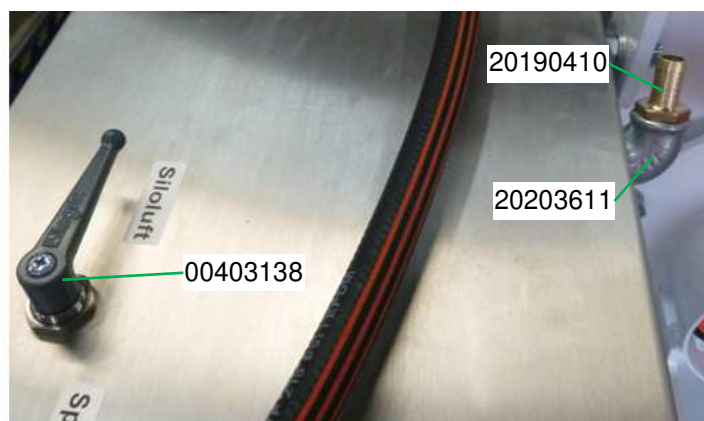
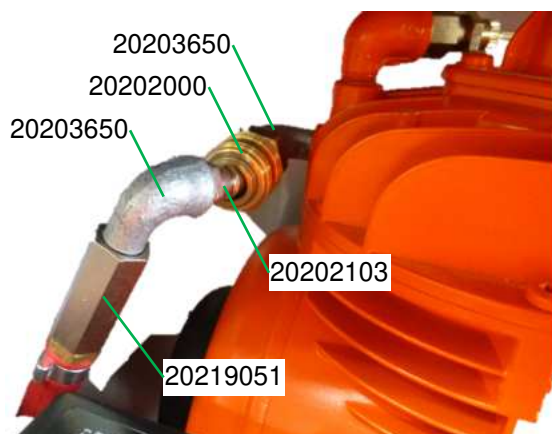
Luftarmatur CMP 4.0 Art.-Nr. 00628080
Air manifold CMP 4.0 part number 00628080



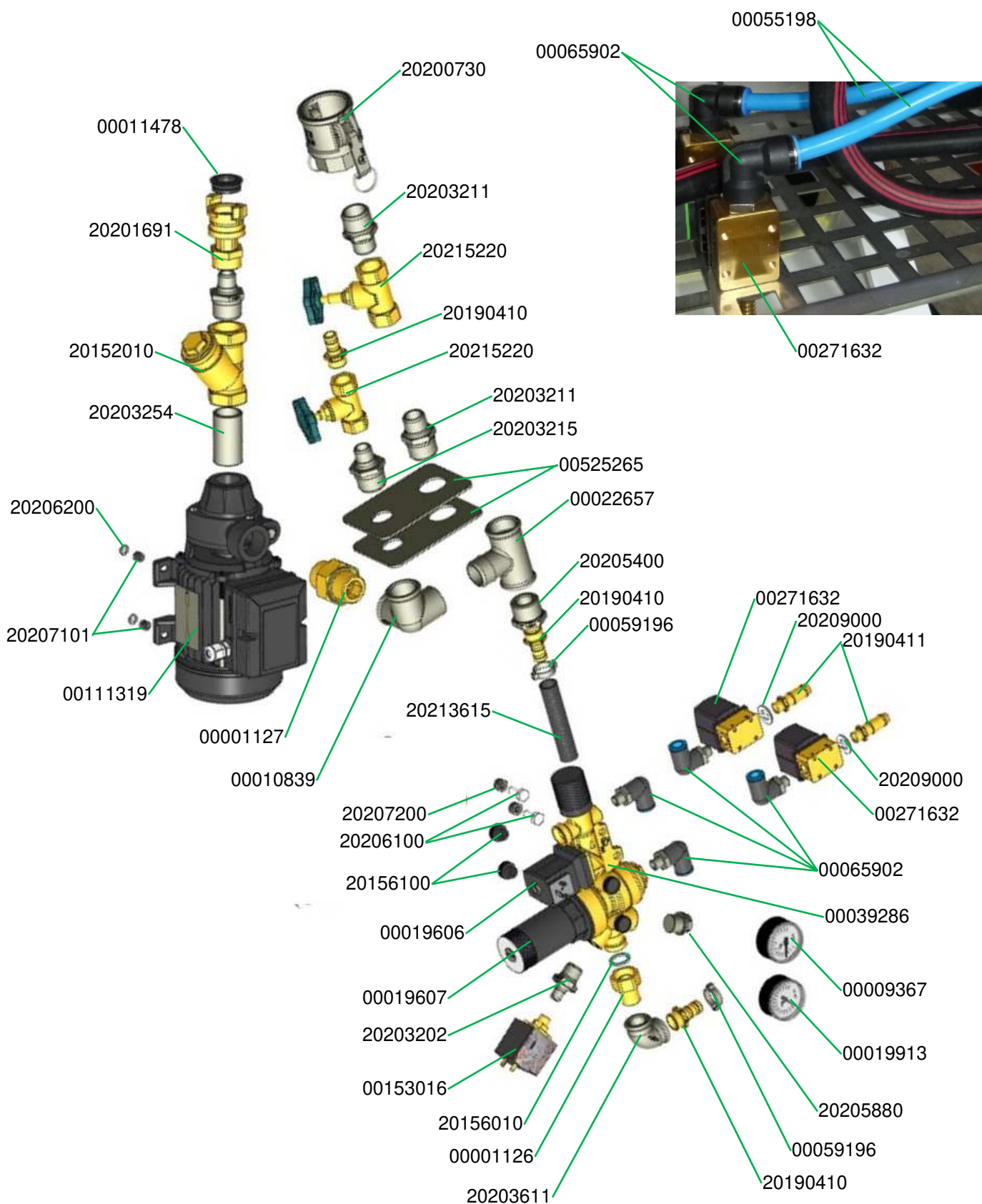
Luftarmatur CMP 4.0 Art.-Nr. 00628080
Air manifold CMP 4.0 part number 00628080



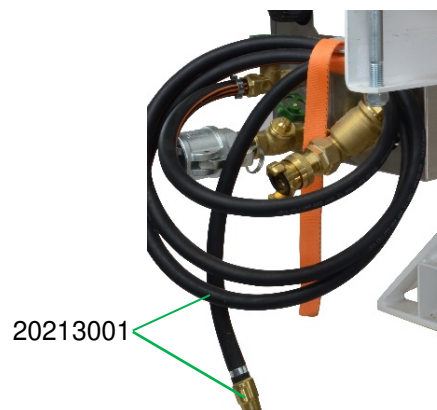
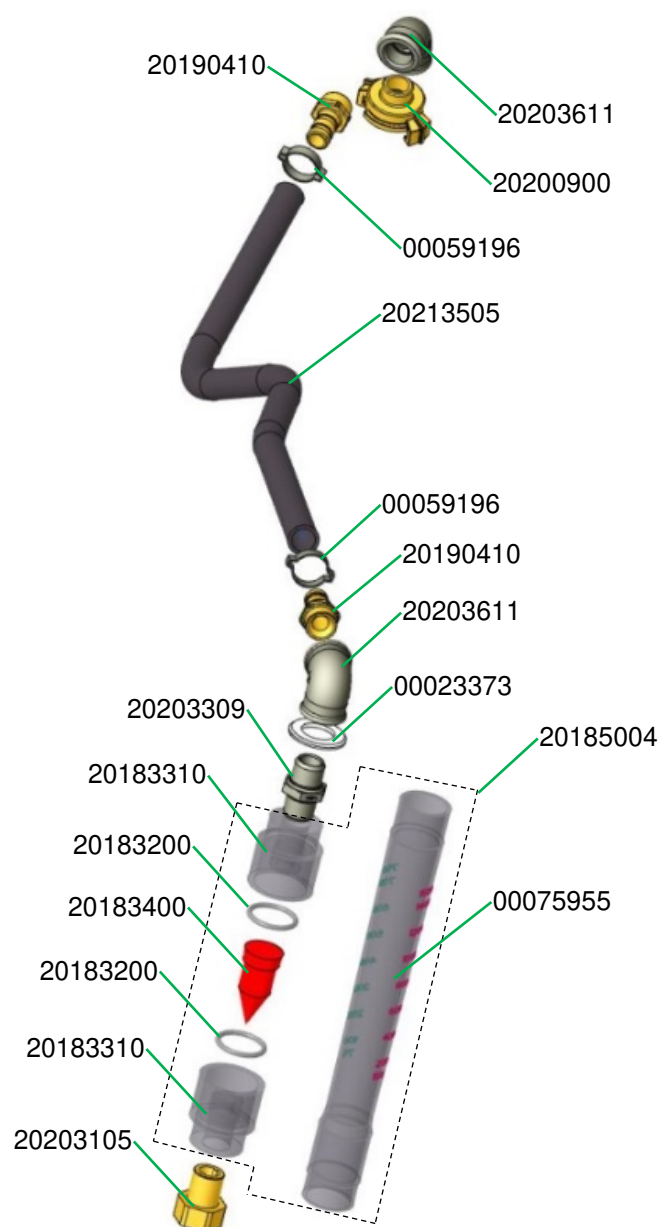
Luftarmatur CMP 4.0 Art.-Nr. 00628080
Air manifold CMP 4.0 part number 00628080



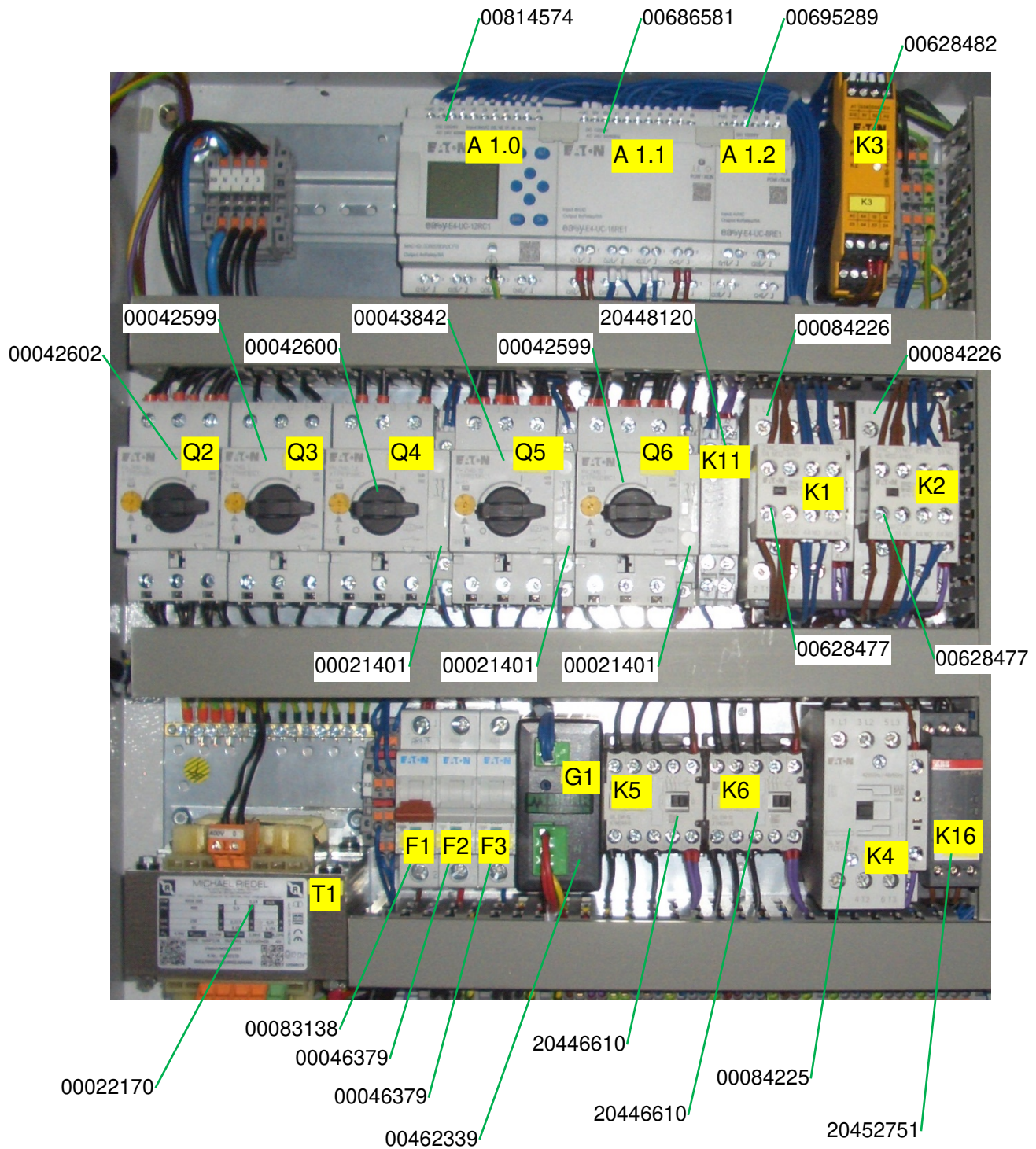
Wasserarmatur CMP 5.0 Art.-Nr. 00771559
Water manifold CMP 5.0 part number 00771559



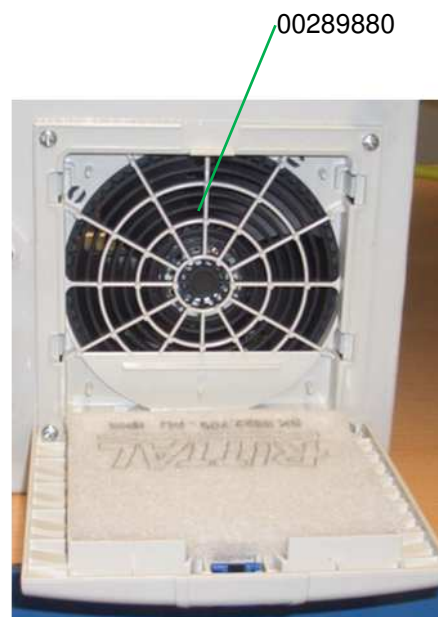
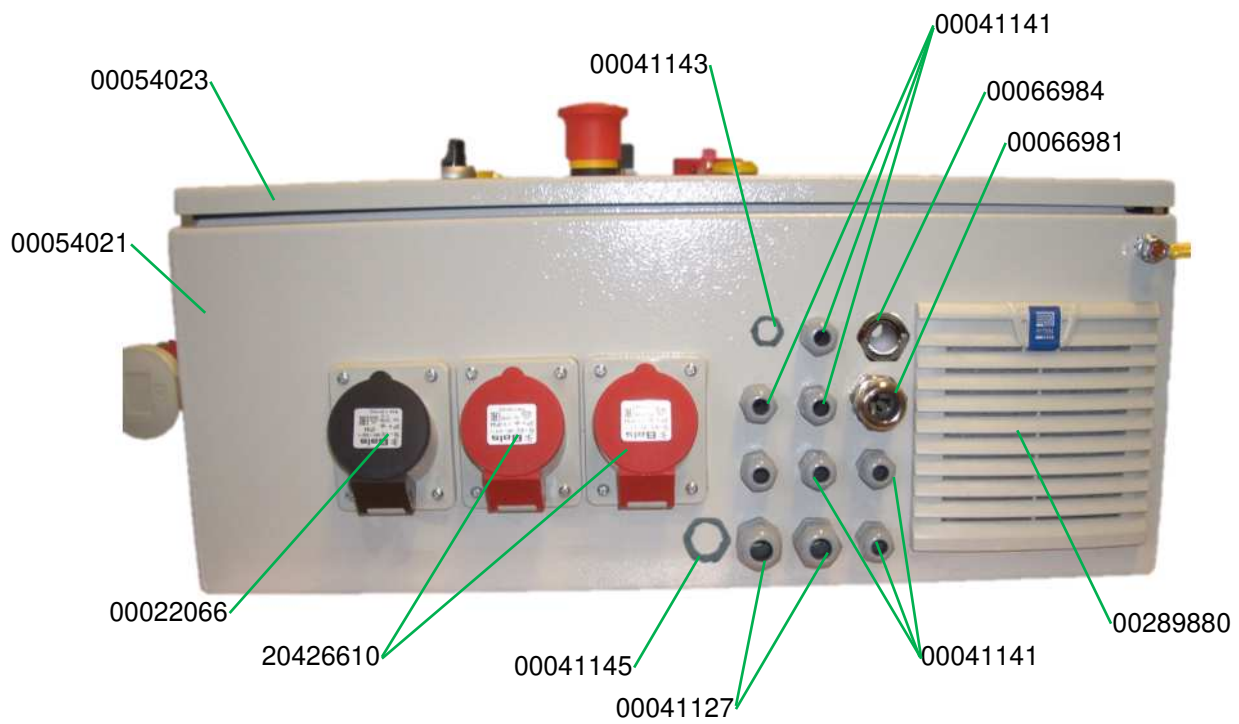
Wasserarmatur CMP 5.0 Art.-Nr. 00771559
Water manifold CMP 5.0 part number 00771559



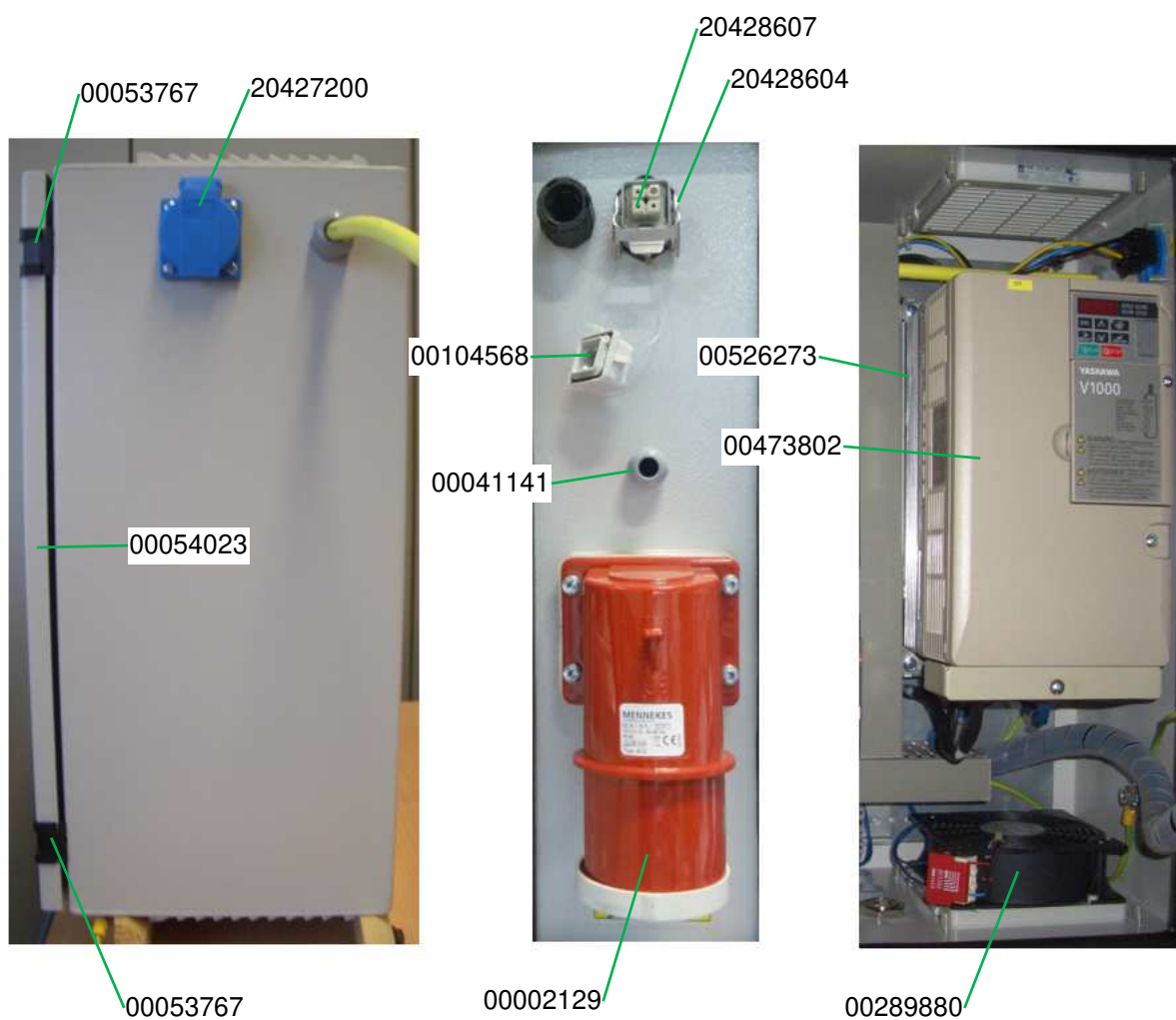
Schaltschrank CMP 30 II_2.18 Art.-Nr. 00627311
Control box CMP 30 II_2.18 part number 00627311



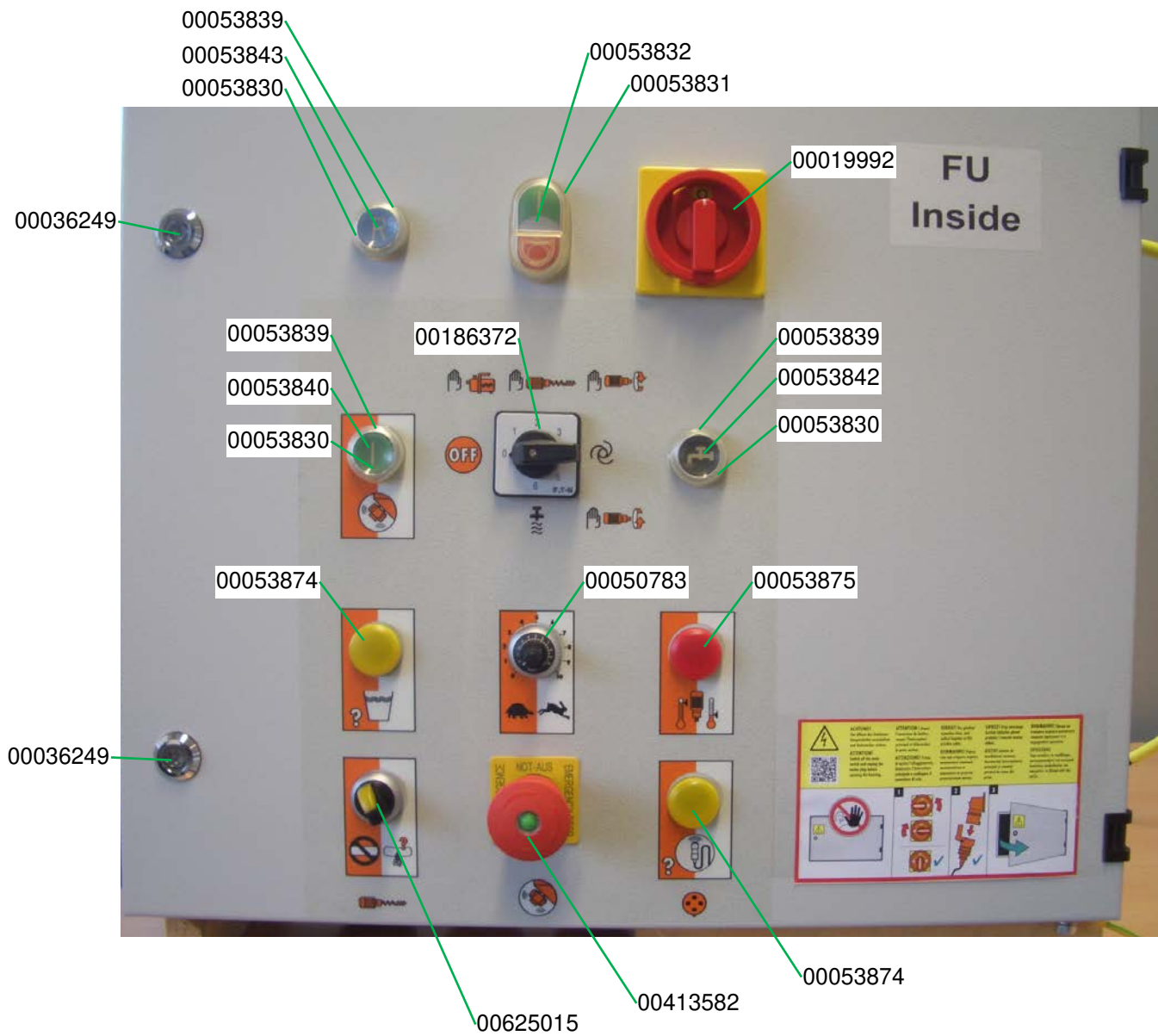
Schaltschrank CMP 30 II_2.18 Art.-Nr. 00627311
Control box CMP 30 II_2.18 part number 00627311



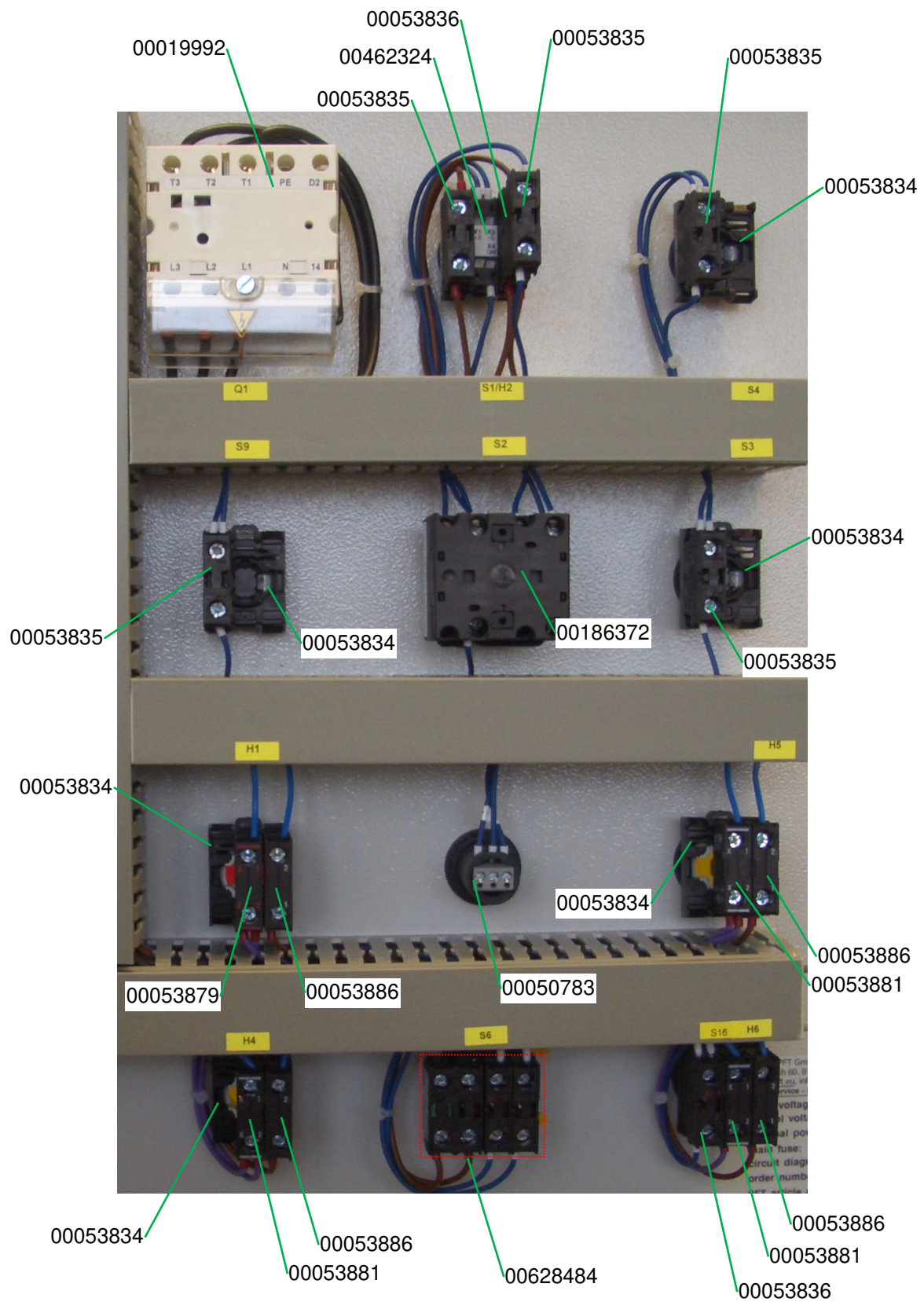
Schaltschrank CMP 30 II_2.18 Art.-Nr. 00627311
Control box CMP 30 II_2.18 part number 00627311



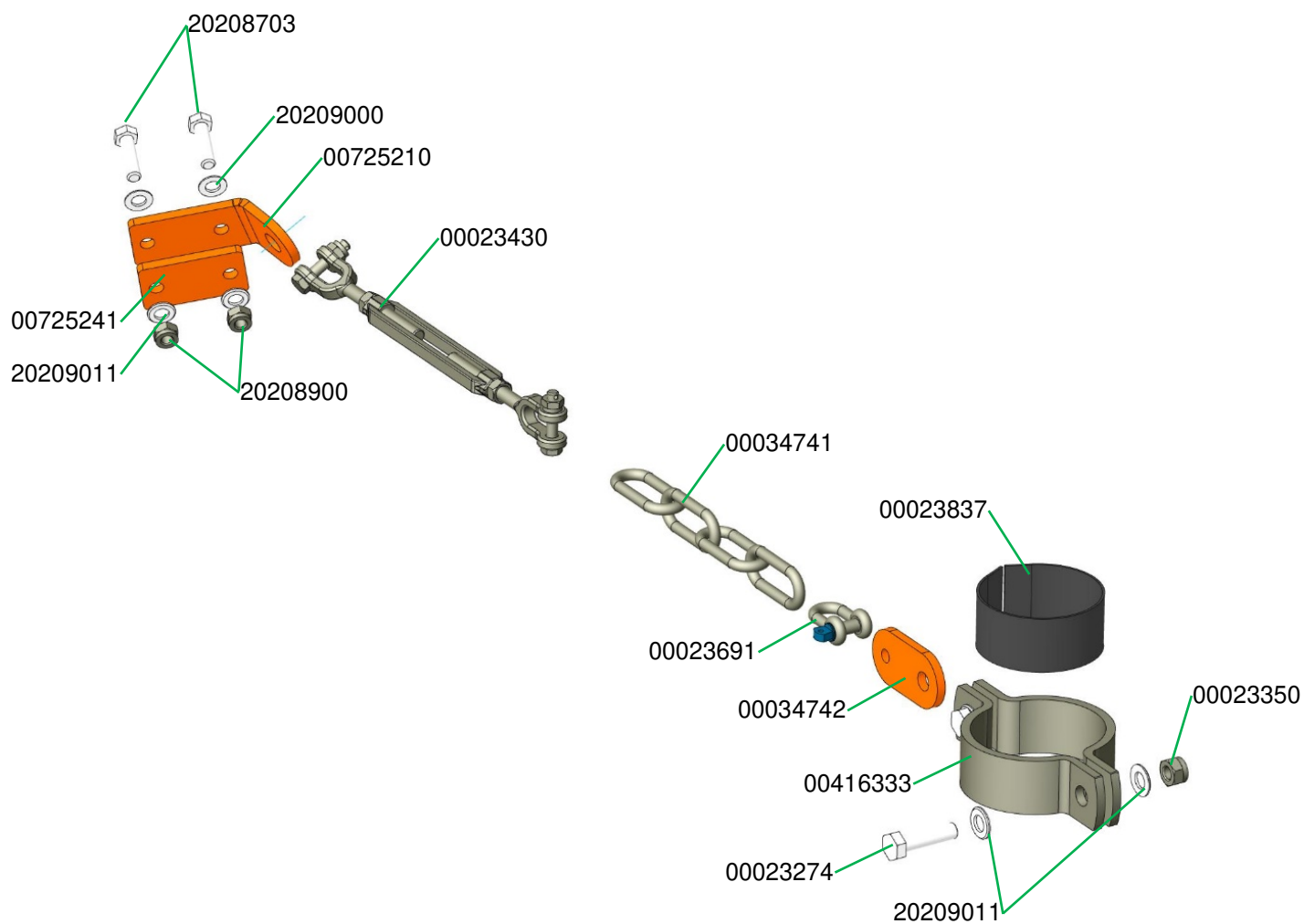
Schaltschrank CMP 30 II_2.18 Art.-Nr. 00627311
Control box CMP 30 II_2.18 part number 00627311



Schaltschrank CMP 30 II_2.18 Art.-Nr. 00627311
Control box CMP 30 II_2.18 part number 00627311



Befestigungsteile zum Anbau an Silo für CMP komplett Art.-Nr. 00725299
Fastening parts for mounting on silo for CMP complete part number 00725299



PFT – ALWAYS AT YOUR SITE



Knauf PFT GmbH & Co. KG
Postfach 60 97343 Iphofen
Einersheimer Straße 53 97346 Iphofen
Deutschland

Telefon +49 9323 31-760
Telefax +49 9323 31-770
Technische Hotline +49 9323 31-1818
info@pft.net
www.pft.net