



Ersatzteilliste / Spare parts list

PFT Förderanlagen / Conveying systems

SILOJET III T _ 00045837 _ 00106521 _ 00105407 _ 00122352



© Knauf PFT GmbH & Co. KG
Postfach 60 97343 Iphofen
Einersheimer Straße 53 97346 Iphofen
Deutschland

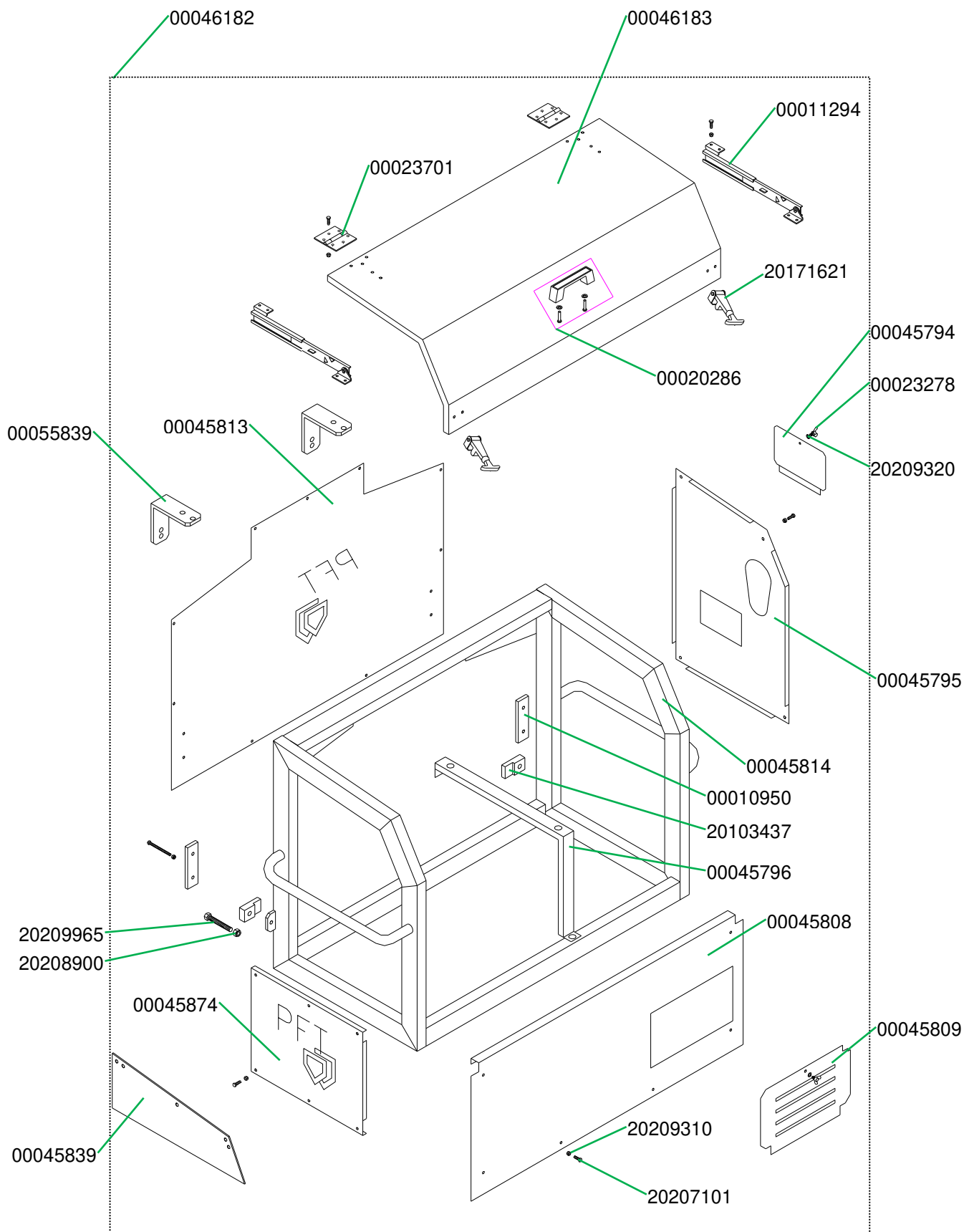
Telefon +49 9323 31-760
Telefax +49 9323 31-770
Technische Hotline +49 9323 31-1818

info@pft.net
www.pft.net

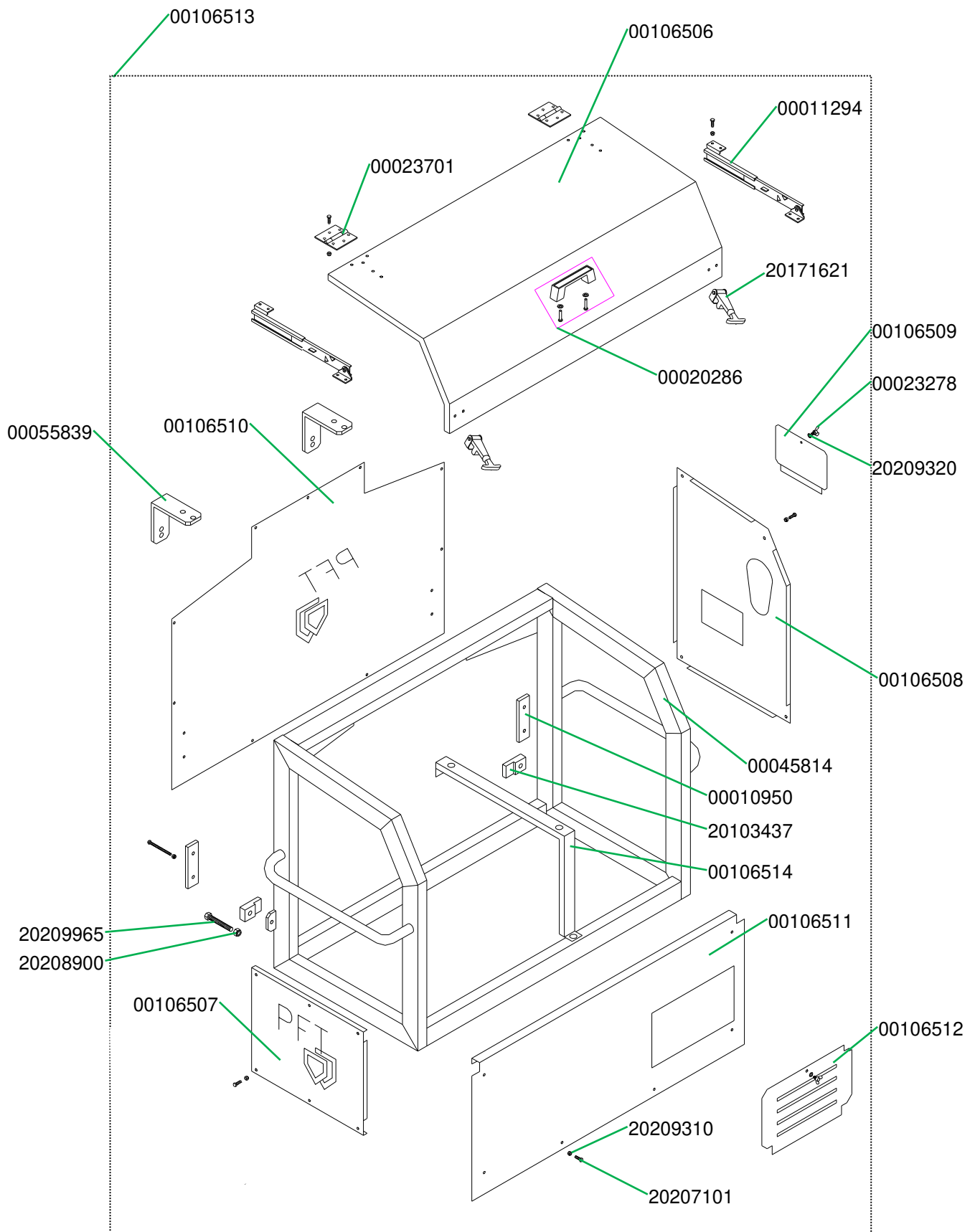
Rahmen SILOJET III T kpl. RAL9010 Artikelnummer 00046182.....	5
Frame SILOJET III cpl. RAL9010 part number 00046182.....	5
Rahmen SILOJET III T kpl. RAL1015 Artikelnummer 00106513.....	6
Frame SILOJET III cpl. RAL1015 part number 00106513.....	6
Rahmen SILOJET III T kpl. RAL2004 Artikelnummer 00105381.....	7
Frame SILOJET III cpl. RAL2004 part number 00105381.....	7
Rahmen SILOJET III T mit BDS komplett RAL2004 Artikelnummer 00122353	8
Frame for SILOJET III T with BDS, complete RAL2004 part number 00122353	8
Rahmen SILOJET III T kpl. RAL1015 Artikelnummer 00679535.....	9
Frame SILOJET III cpl. RAL1015 part number 00679535.....	9
Rahmen SILOJET III T BDS plus kpl RAL2004 Artikelnummer 00745293.....	10
Frame SILOJET III T BDS plus cpl. RAL2004 part number 00745293	10
Rotationskompressor KDT 3.140 Artikelnummer 00102156.....	11
Rotary compressor KDT 3.140 part number 00102156	11
Rotationskompressor KDT 3.140 8,1KW Artikelnummer 00102156 / 00200463 HD	12
Rotary compressor KDT 3.140 8.1 KW part number 00102156 / 00200463 HD	12
Rotationskompressor KDT 3.145 7,5KW Artikelnummer 00670518 HD.....	13
Rotary compressor KDT 3.145 7,5 KW part number 00670518 HD.....	13
Rotationskompressor KDT 3.145 7,5KW Artikelnummer 00670518 HD.....	14
Rotary compressor KDT 3.145 7,5 KW part number 00670518 HD.....	14
Fördergefäß SILOJET III T komplett.....	15
Conveying pot SILOJET III T, complete	15
Fördergefäß SILOJET III T komplett.....	16
Conveying pot SILOJET III T, complete	16
Stellantrieb zum Absperrorgan Typ 6	17
Actuator for closing flap Typ 6.....	17
Fördergefäß SILOJET komplettmit BDS-Belüftungssystem	18
Conveying pot SILOJET complete with BDS ventilation system.....	18
Absperrorgan Ø 250 mm ohne Stellantrieb, Dichtung wechselbar ab 04.2016 Artikelnummer 00089078	19
Closing flap Ø 250 mm without actuator, gasket can be changed parts since year part number 00089078	19

Absperrorgan Ø 250 mm ohne Stellantrieb, Dichtung wechselbar bis 04.2016 Artikelnummer 00089078	20
Closing flap Ø 250 mm without actuator, gasket can be changed parts since year part number 00089078	20
Drucksteuerung SILOJET III T kpl.	21
Pressure control for SILOJET III T cpl.	21
Drucksteuerung SILOJET 145 BDS komplett	22
Pressure control SILOJET 145 BDS ventilation system, complete.....	22
Schaltschrank SILOJET III ohne BDS Artikelnummer 00046174	23
Control box SILOJET III without BDS part number 00046174	23
Schaltschrank SILOJET III ohne BDS Artikelnummer 00046174	24
Control box SILOJET III without BDS part number 00046174	24
Schaltschrank SILOJET III plus Artikelnummer 00681407	25
Control box SILOJET III plus part number 00681407	25
Schaltschrank SILOJET III plus Artikelnummer 00681407	26
Control box SILOJET III plus part number 00681407	26
Blindstecker Anforderung SILOMAT 42 V Artikelnummer 00466177.....	27
Dummy connector requirement SILOMAT 42 V part number 00466177	27
Schaltschrank SILOJET III T mit BDS Art. Nr. 00122062.....	28
Control box SILOJET III with BDS part number 00122062.....	28
Schaltschrank SILOJET III T mit BDS Art. Nr. 00122062.....	29
Control box SILOJET III with BDS part number 00122062.....	29
Dokumentenbox rund.....	30
Document box round	30
Zubehör.....	31
Accessories	31

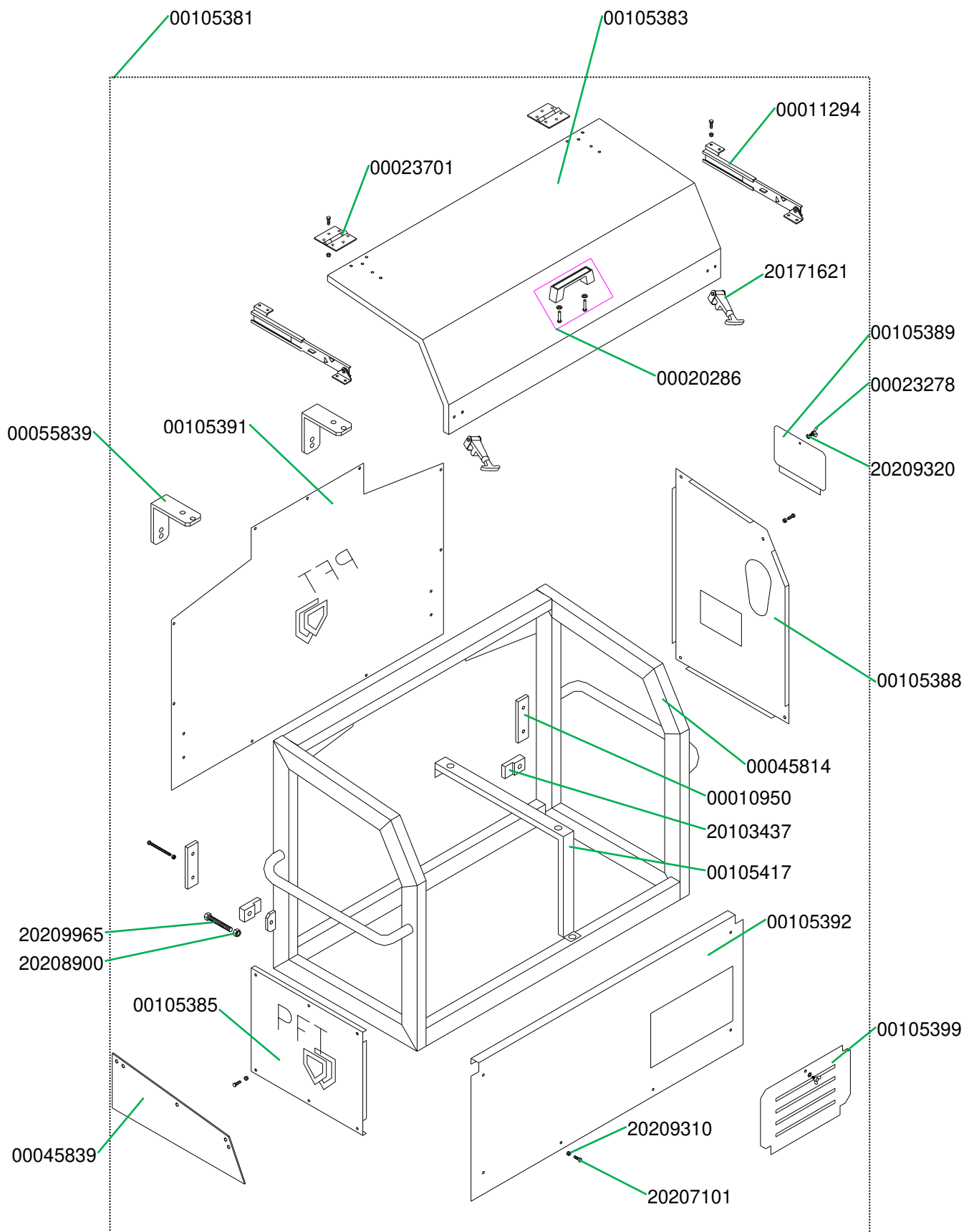
Rahmen SILOJET III T kpl. RAL9010 Artikelnummer 00046182
 Frame SILOJET III cpl. RAL9010 part number 00046182



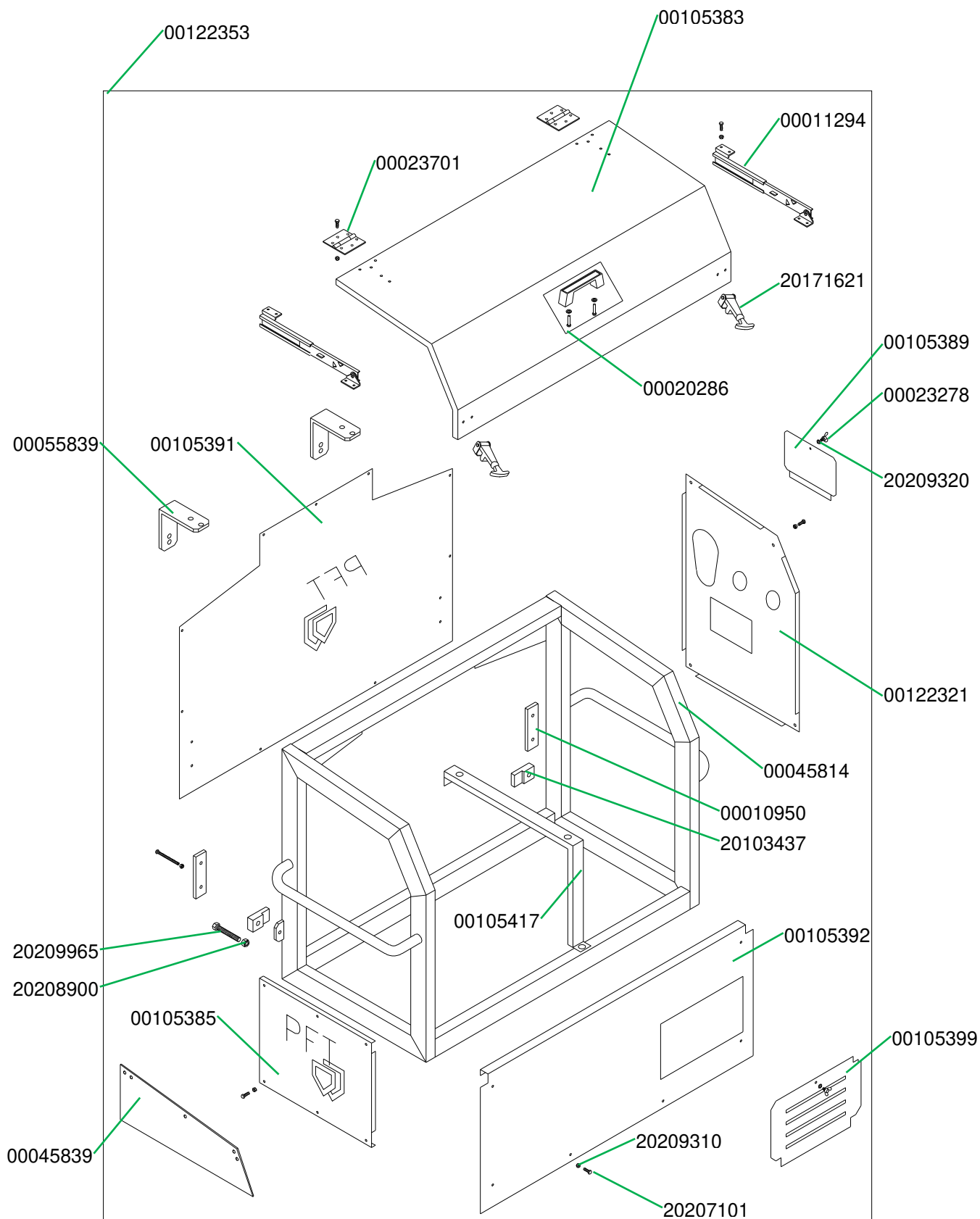
Rahmen SILOJET III T kpl. RAL1015 Artikelnummer 00106513
 Frame SILOJET III cpl. RAL1015 part number 00106513



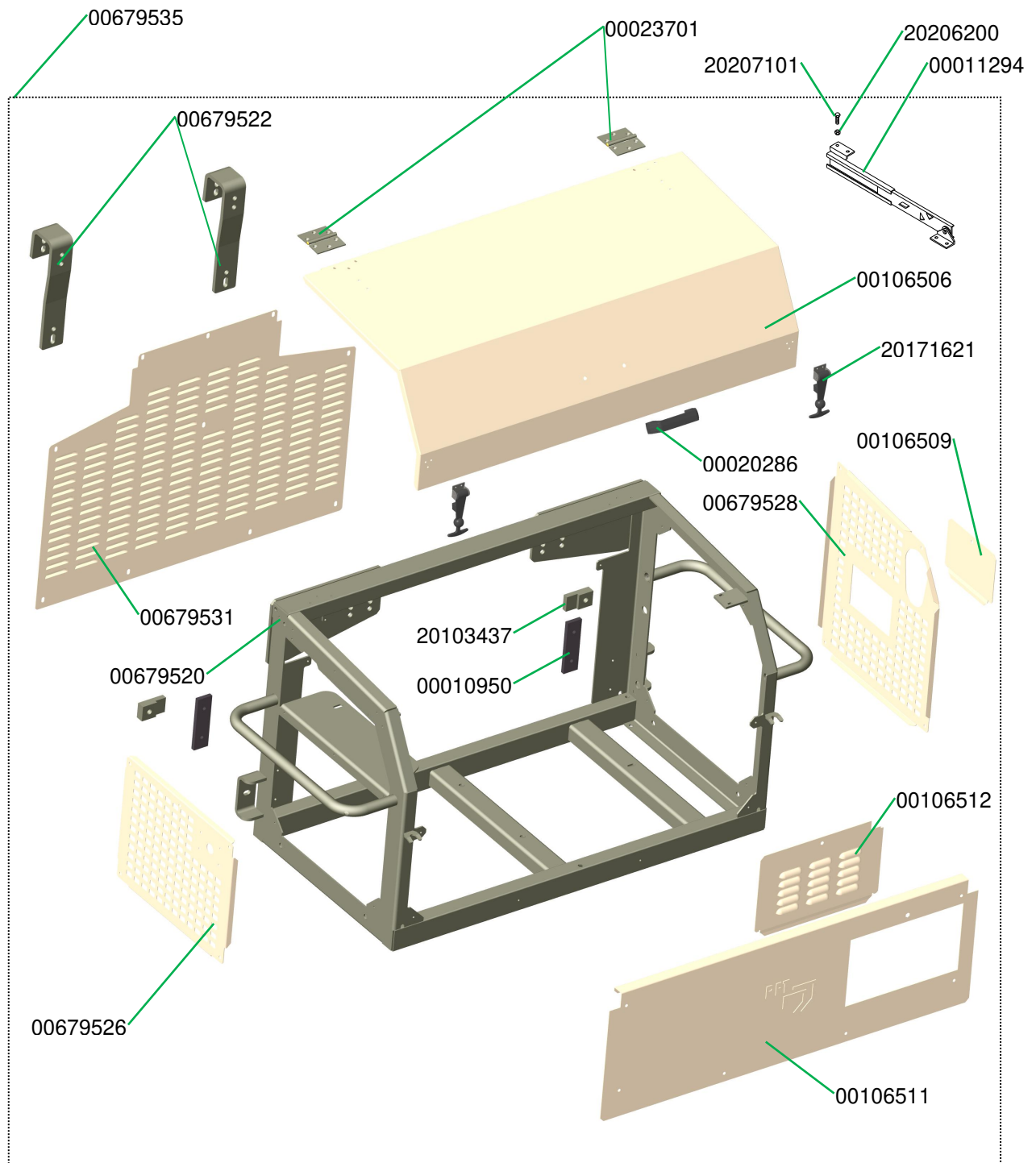
Rahmen SILOJET III T kpl. RAL2004 Artikelnummer 00105381
 Frame SILOJET III cpl. RAL2004 part number 00105381



Rahmen SILOJET III T mit BDS komplett RAL2004 Artikelnummer 00122353
 Frame for SILOJET III T with BDS, complete RAL2004 part number 00122353

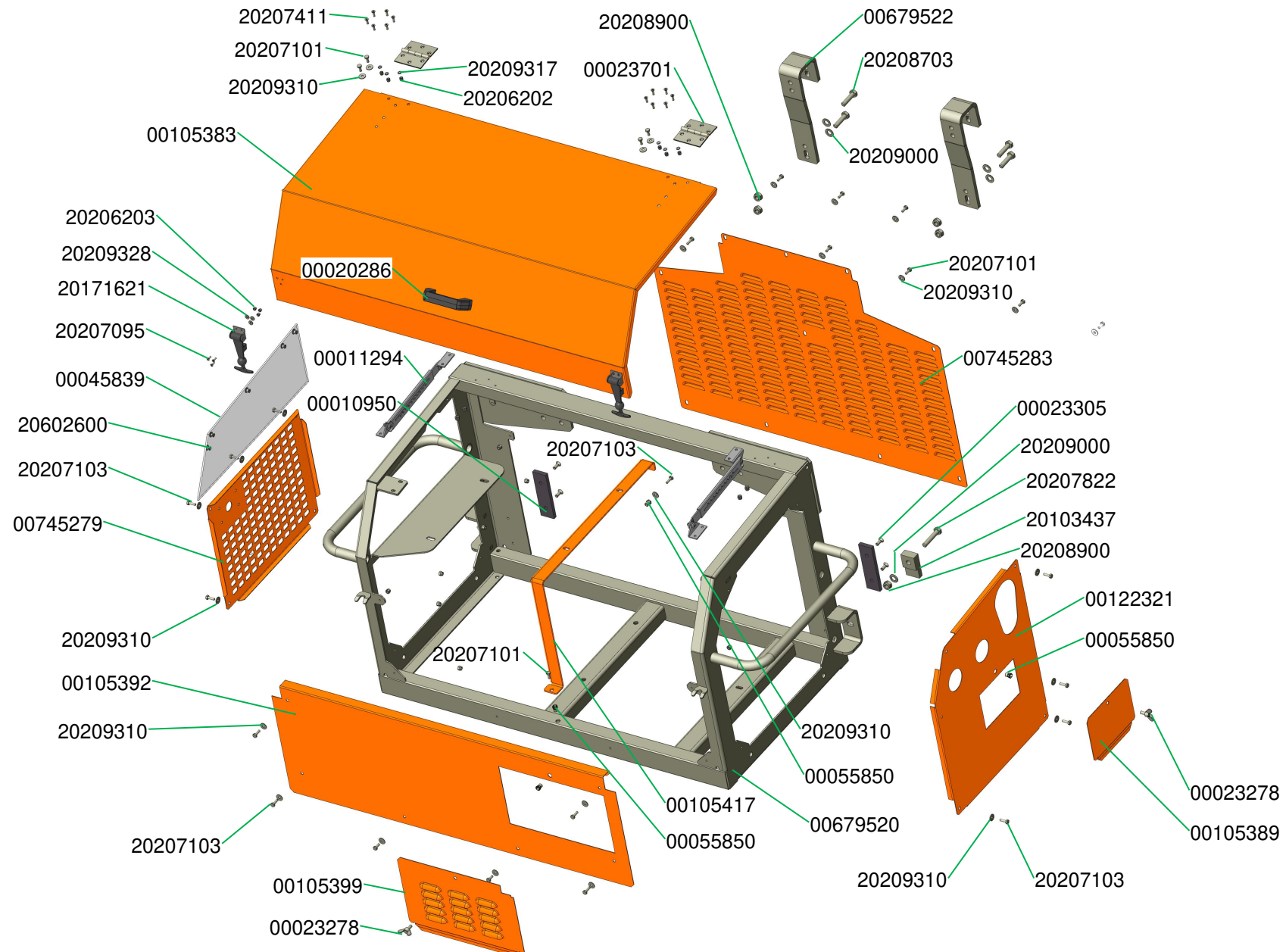


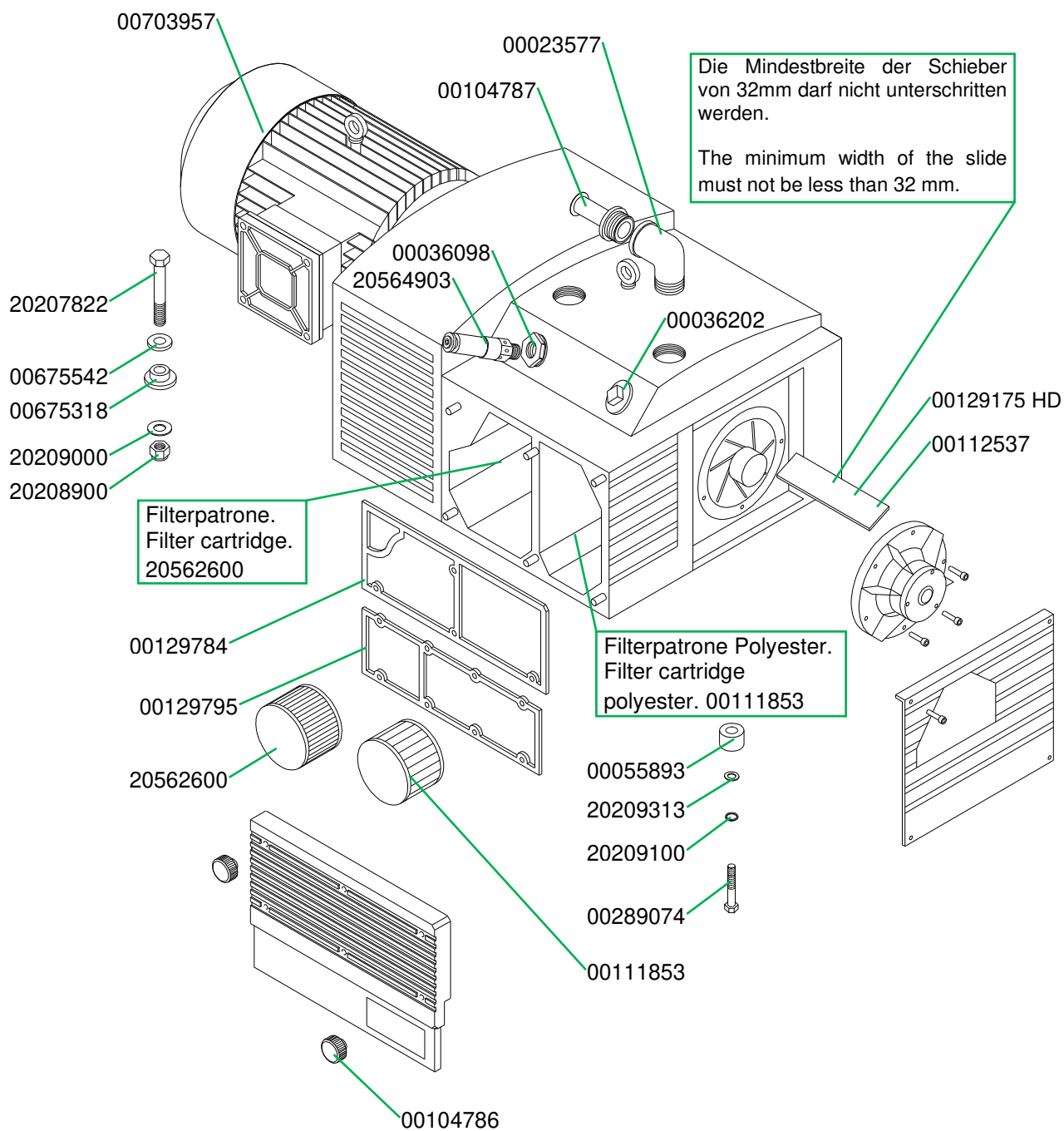
Rahmen SILOJET III T kpl. RAL1015 Artikelnummer 00679535
 Frame SILOJET III cpl. RAL1015 part number 00679535

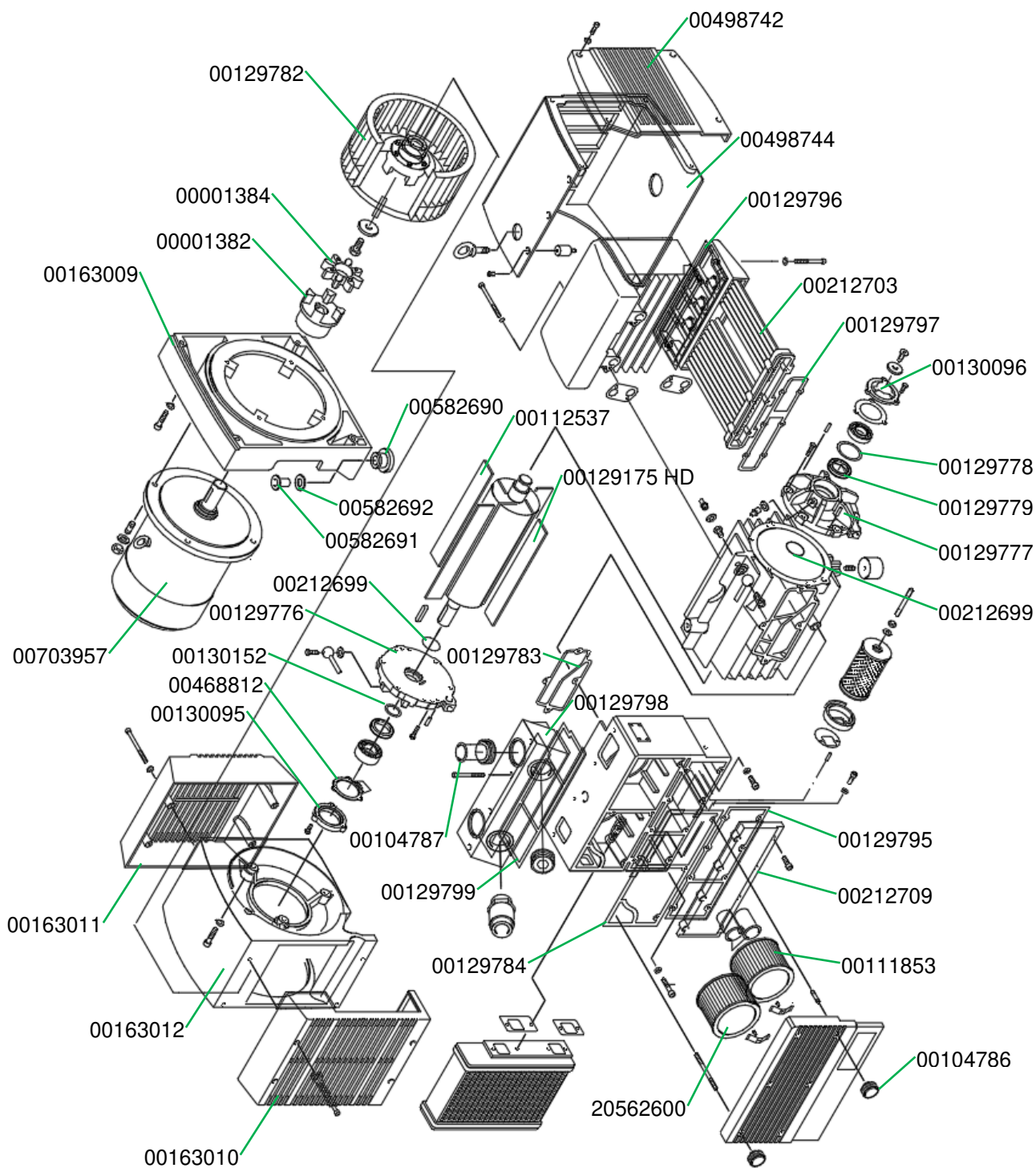


Rahmen SILOJET III T BDS plus kpl RAL2004 Artikelnummer 00745293

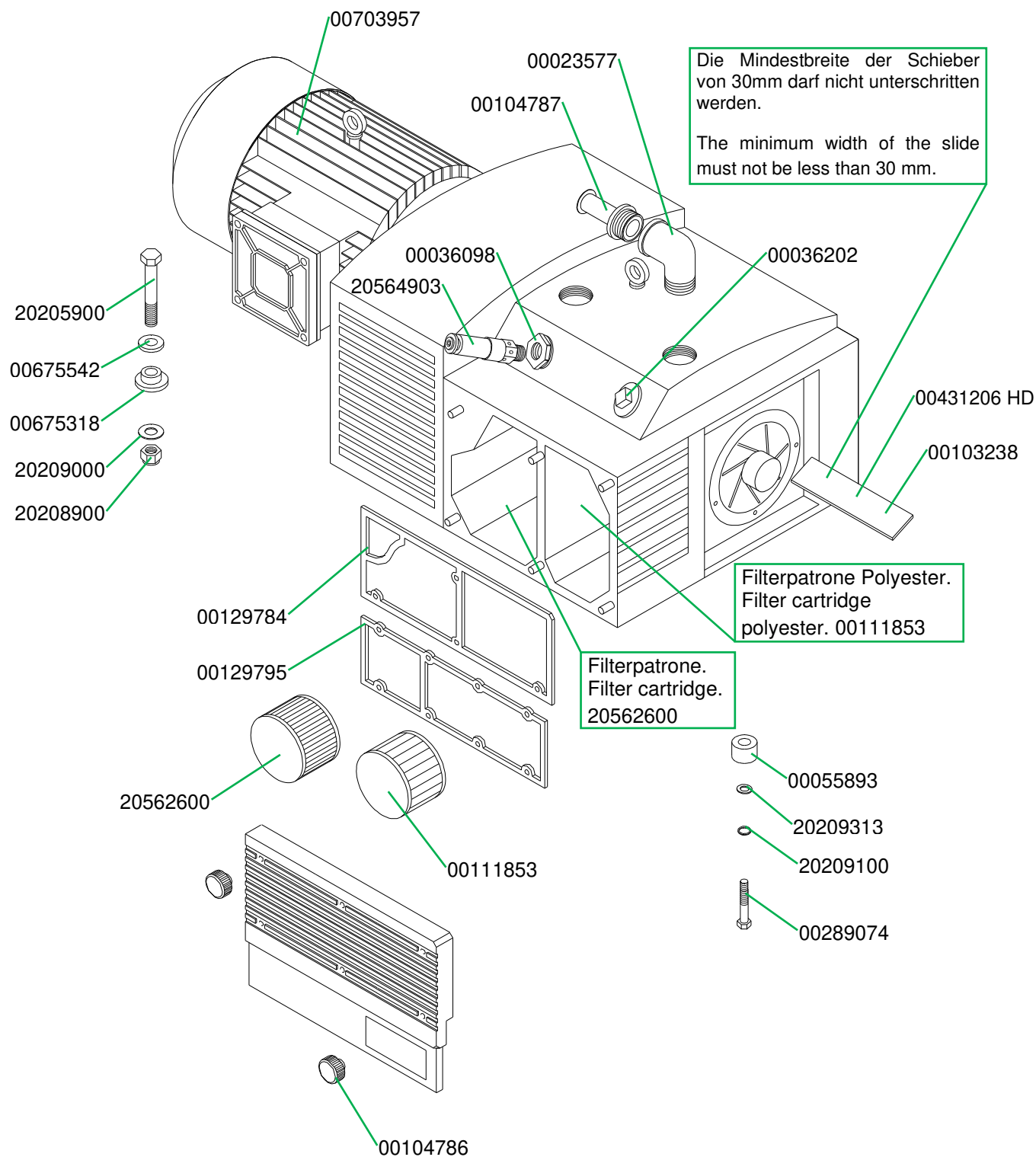
Frame SILOJET III T BDS plus cpl. RAL2004 part number 00745293



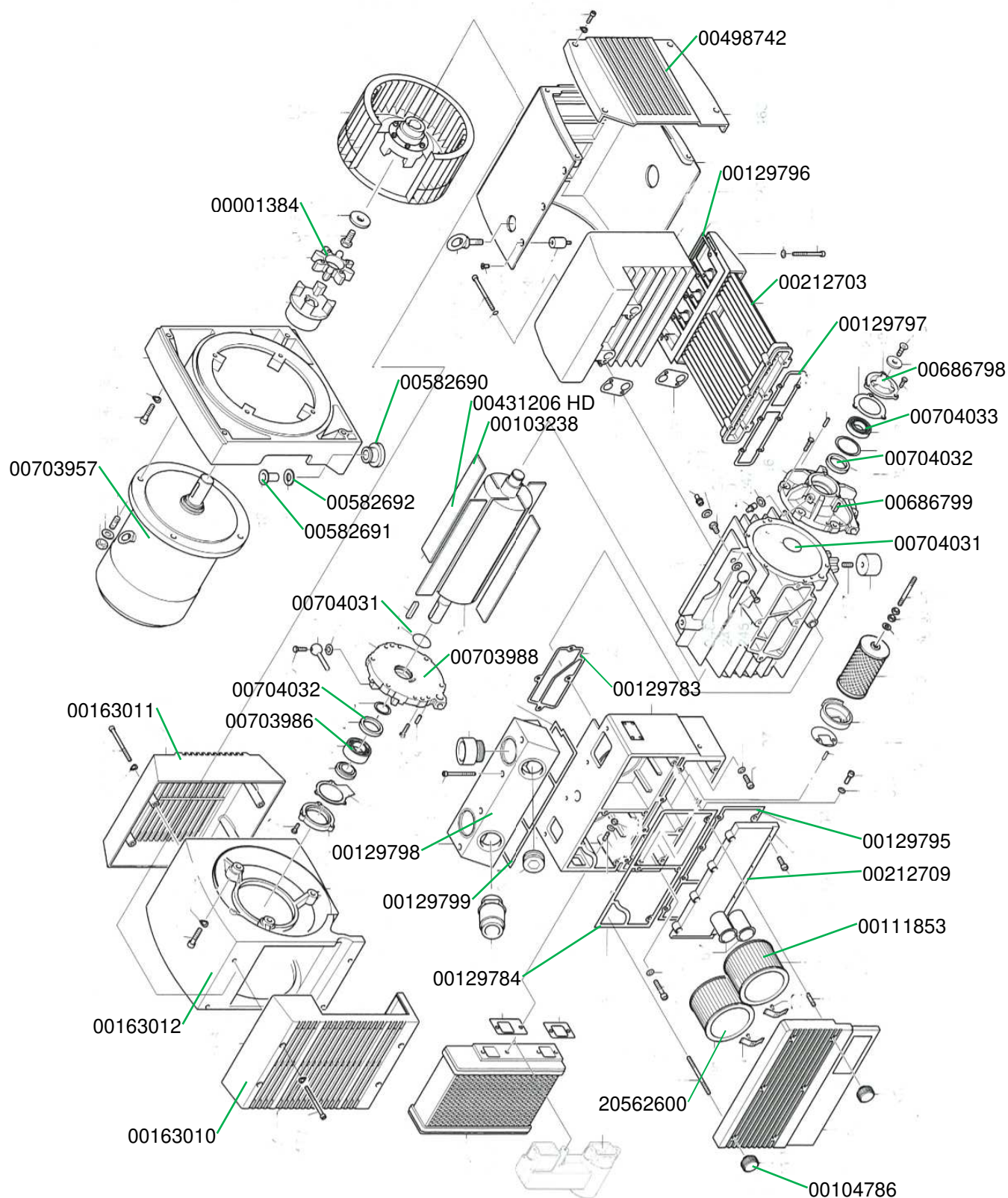




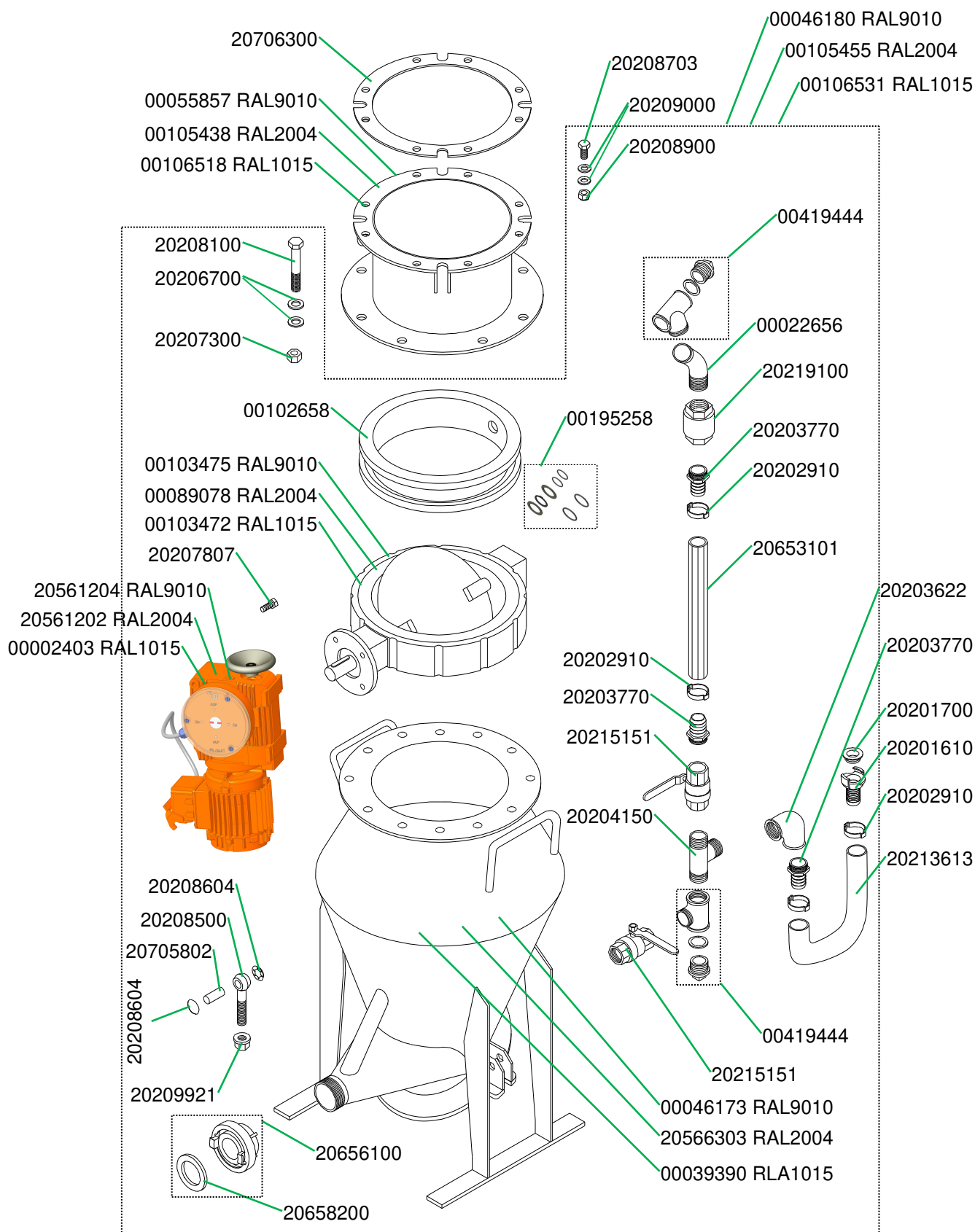
Rotationskompressor KDT 3.145 7,5KW Artikelnummer 00670518 HD
 Rotary compressor KDT 3.145 7,5 KW part number 00670518 HD



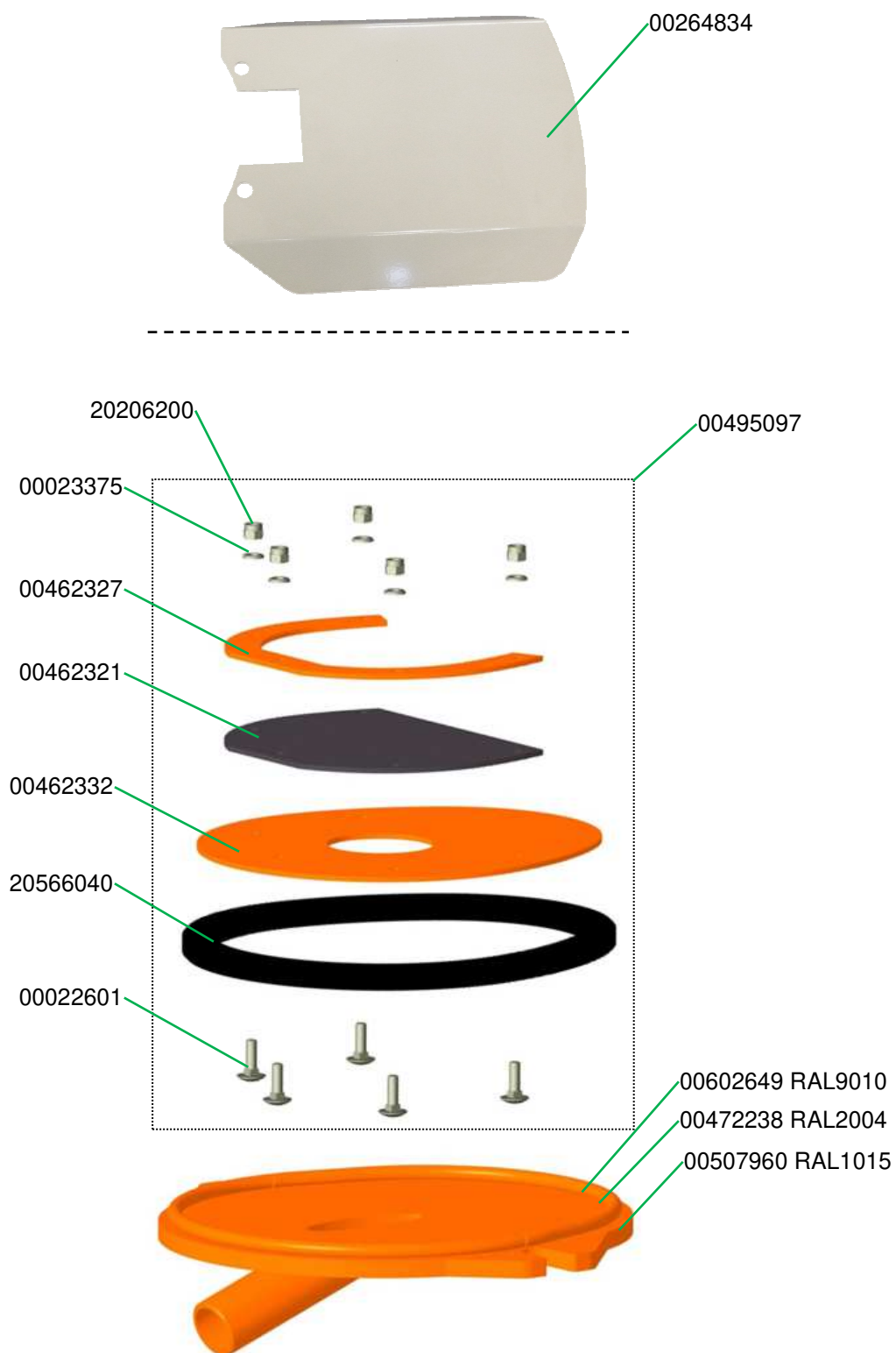
Rotationskompressor KDT 3.145 7,5KW Artikelnummer 00670518 HD
 Rotary compressor KDT 3.145 7,5 KW part number 00670518 HD



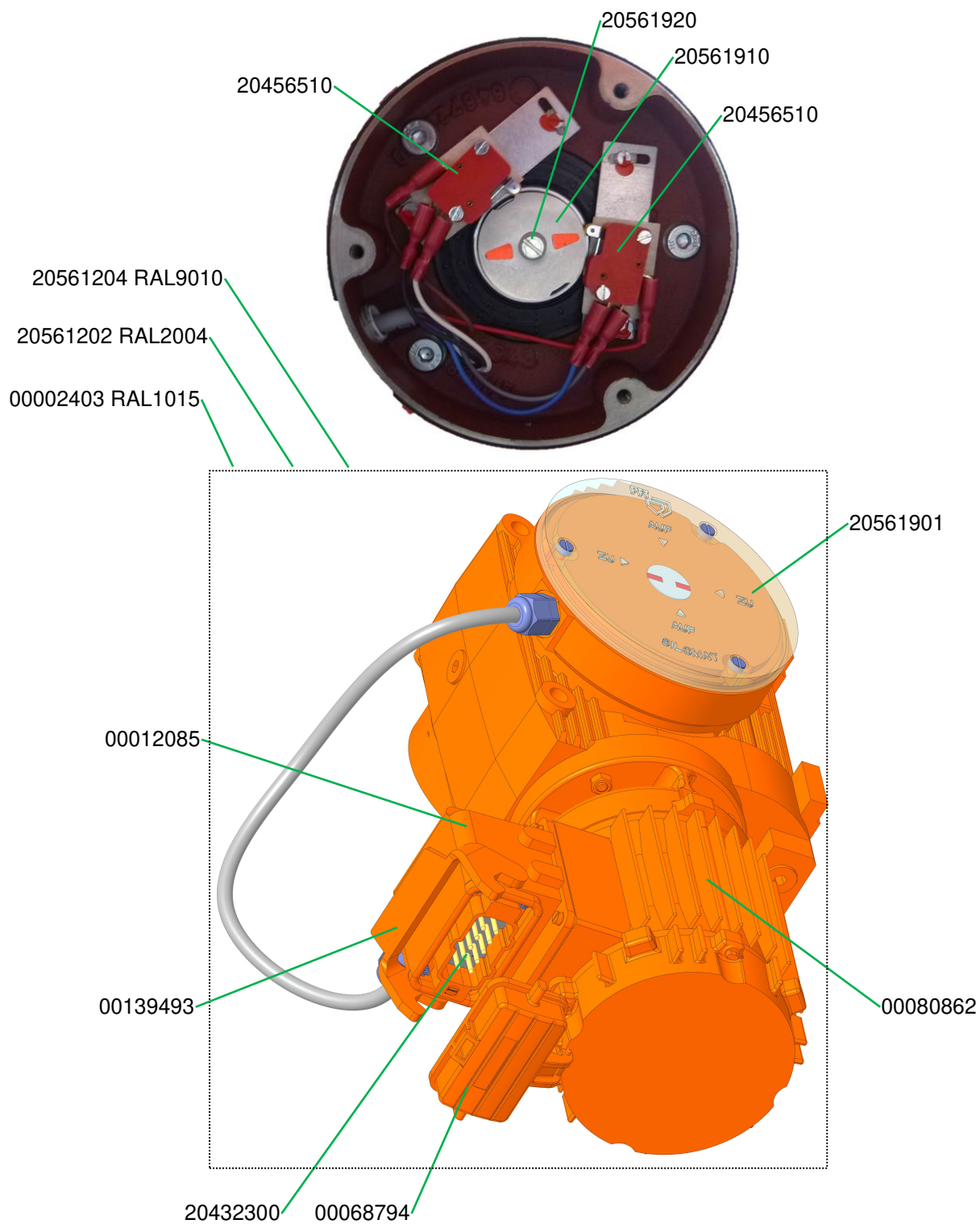
Fördergefäß SILOJET III T komplett
Conveying pot SILOJET III T, complete



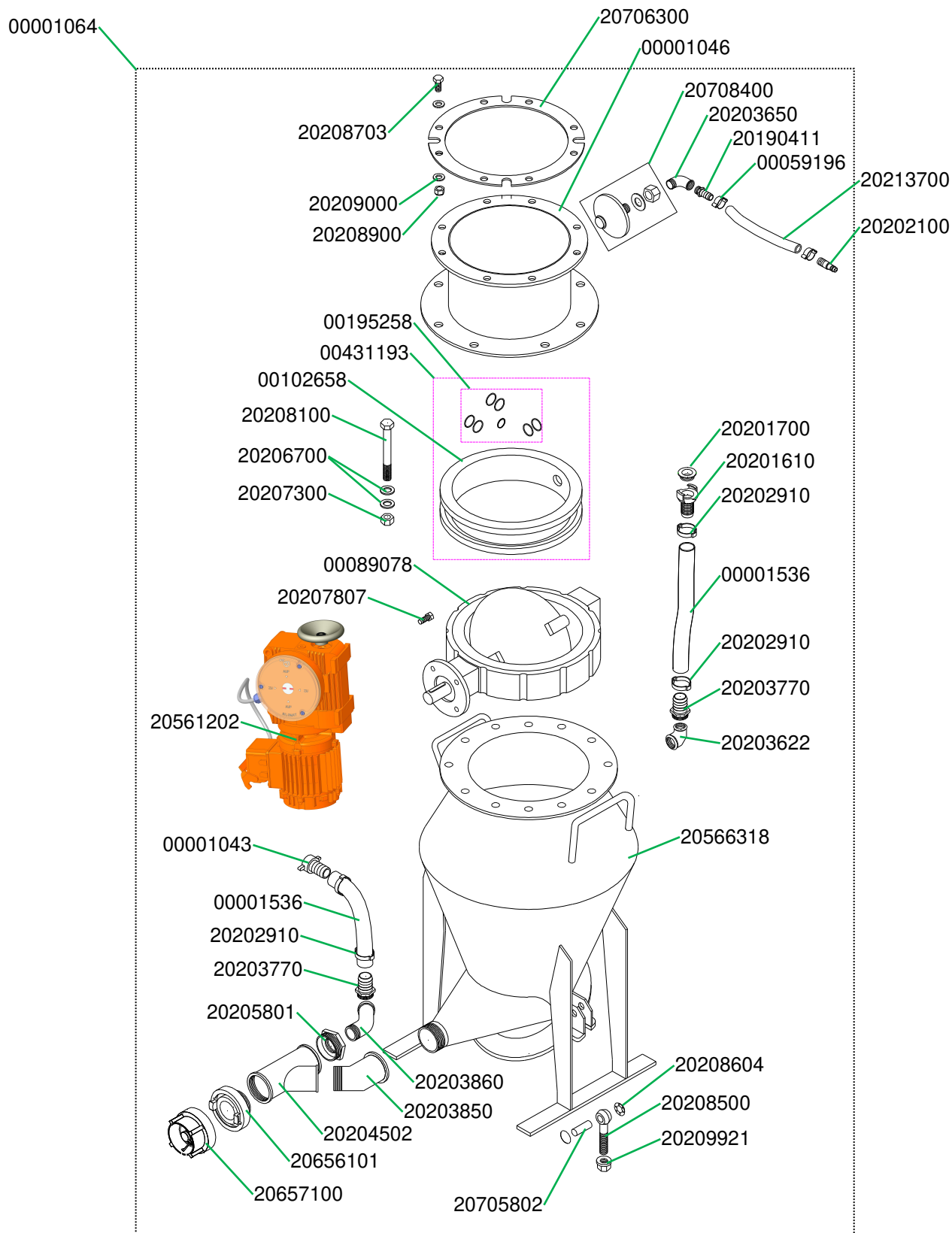
Fördergefäß SILOJET III T komplett
Conveying pot SILOJET III T, complete



Stellantrieb zum Absperrorgan Typ 6 Actuator for closing flap Typ 6

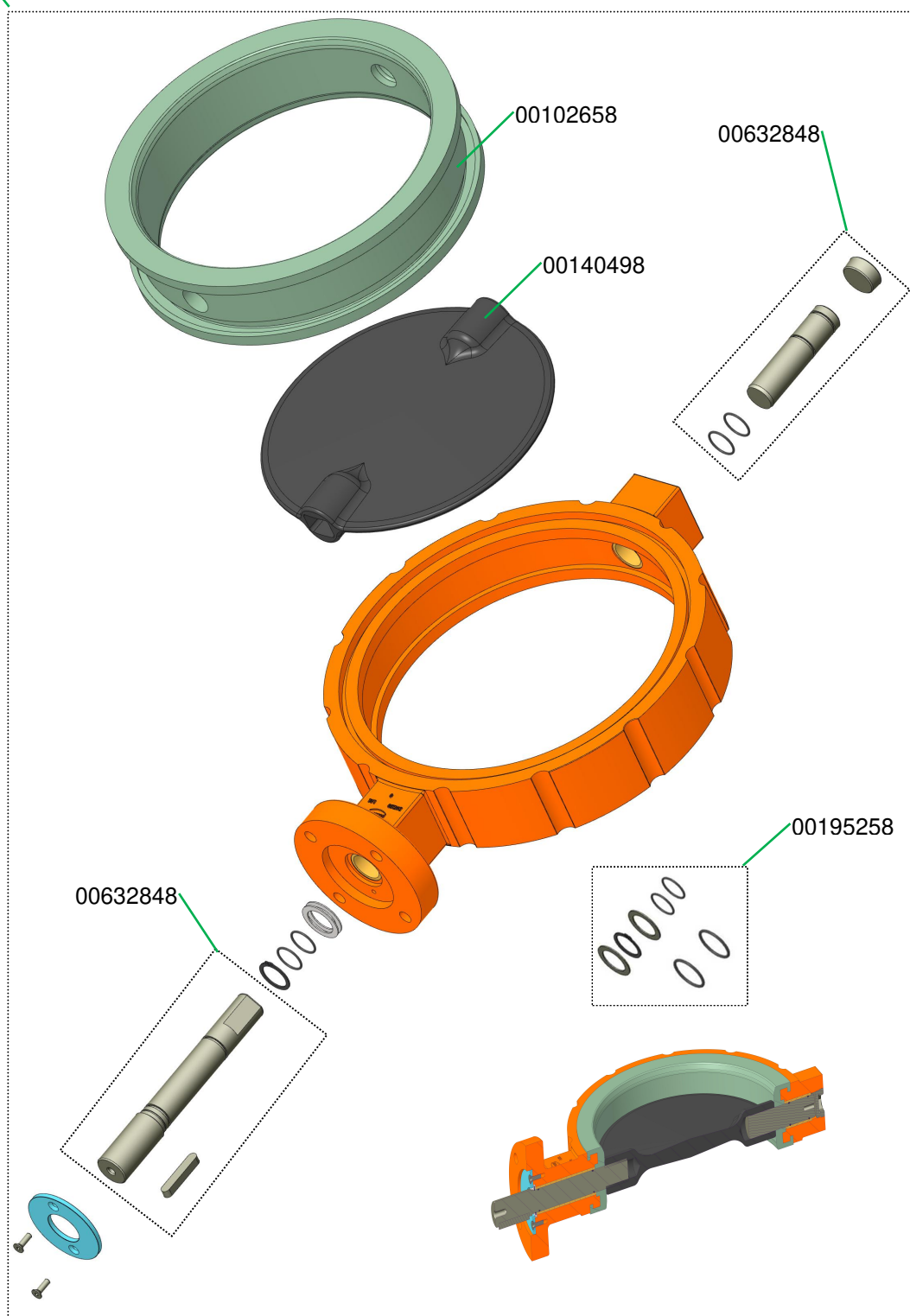


Fördergefäß SILOJET komplett mit BDS-Belüftungssystem
Conveying pot SILOJET complete with BDS ventilation system



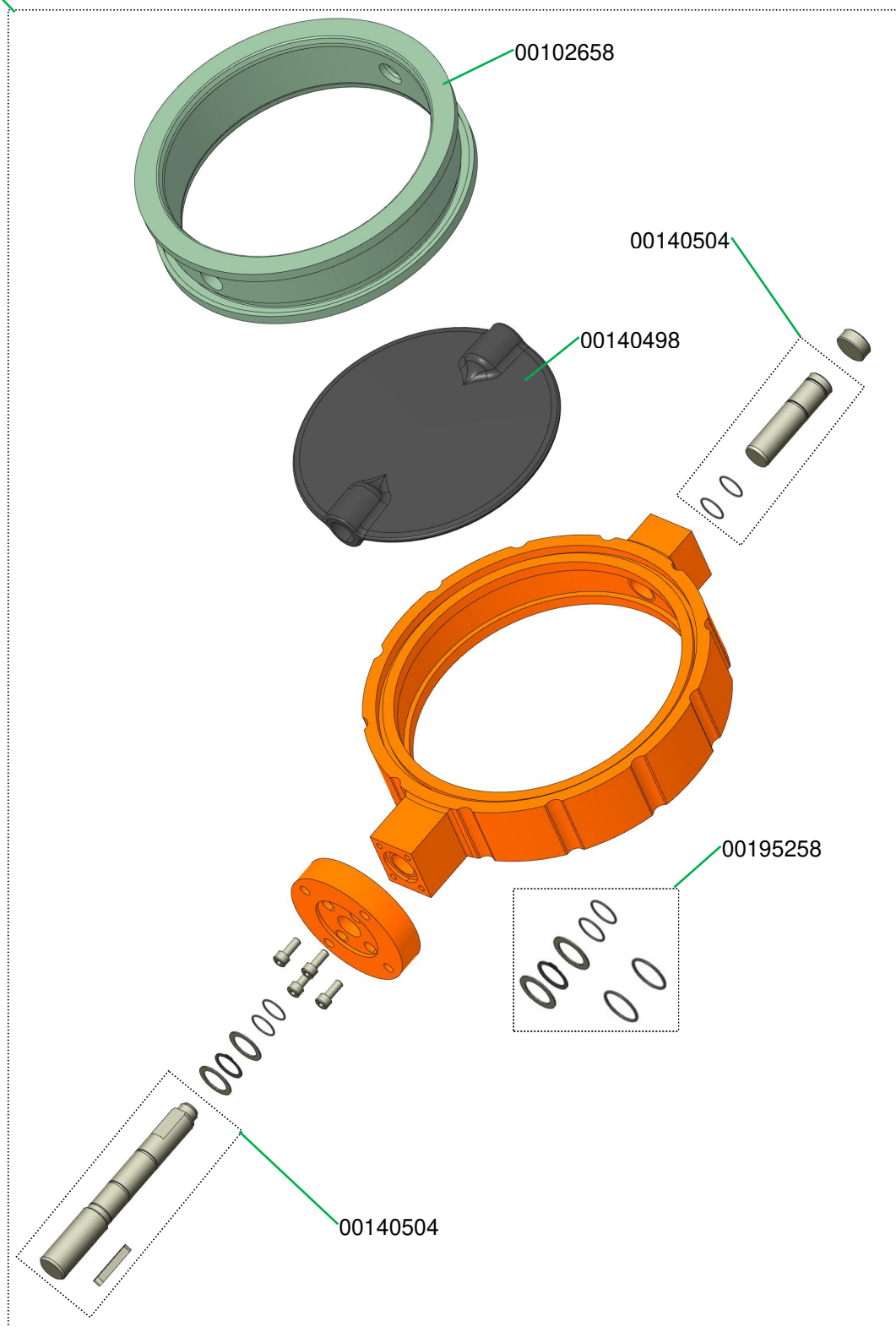
Absperrorgan Ø 250 mm ohne Stellantrieb, Dichtung wechselbar ab 04.2016 Artikelnummer 00089078
Closing flap Ø 250 mm without actuator, gasket can be changed parts since year part number 00089078

00089078

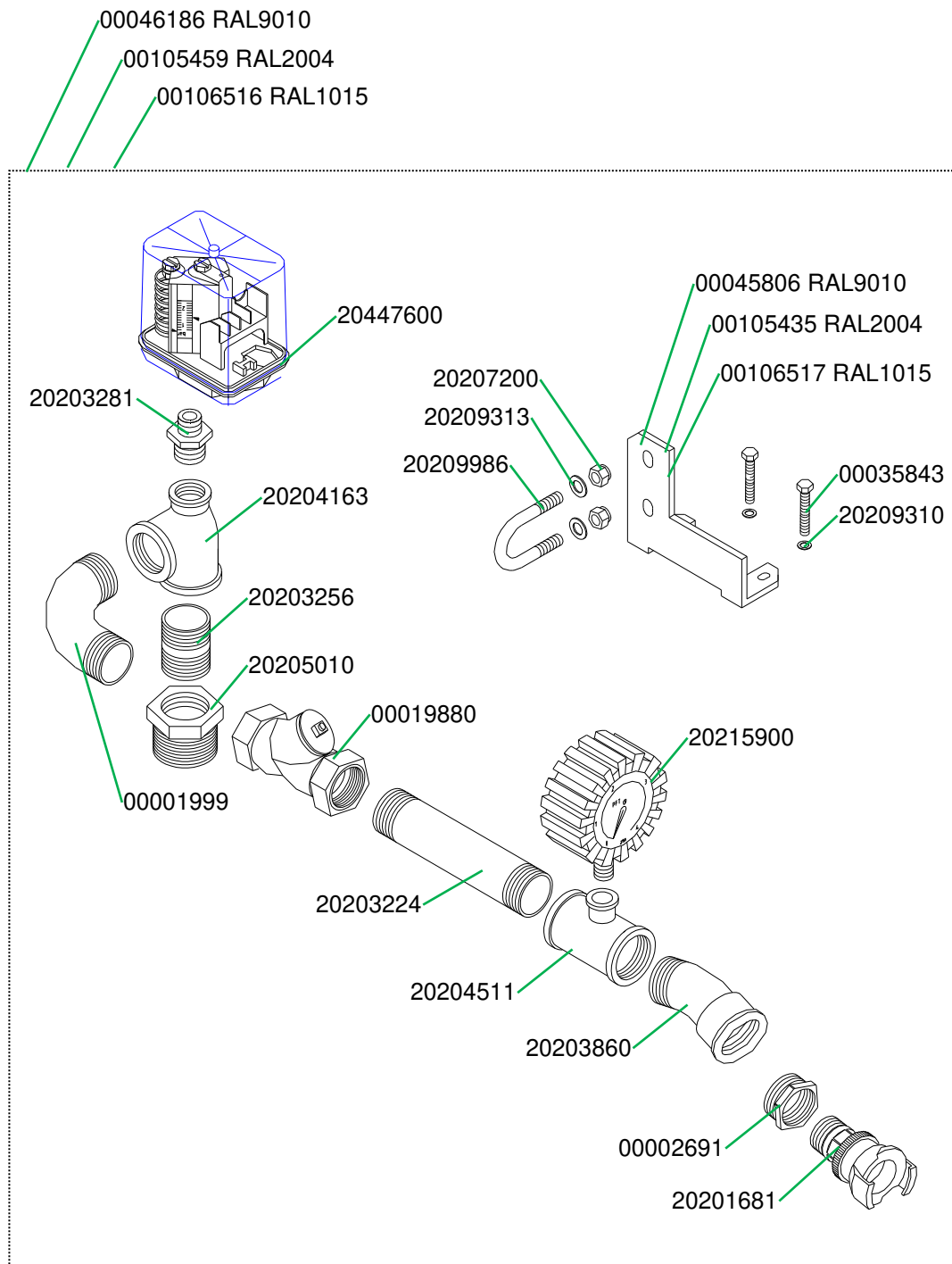


Absperrorgan Ø 250 mm ohne Stellantrieb, Dichtung wechselbar bis 04.2016 Artikelnummer 00089078
Closing flap Ø 250 mm without actuator, gasket can be changed parts since year part number 00089078

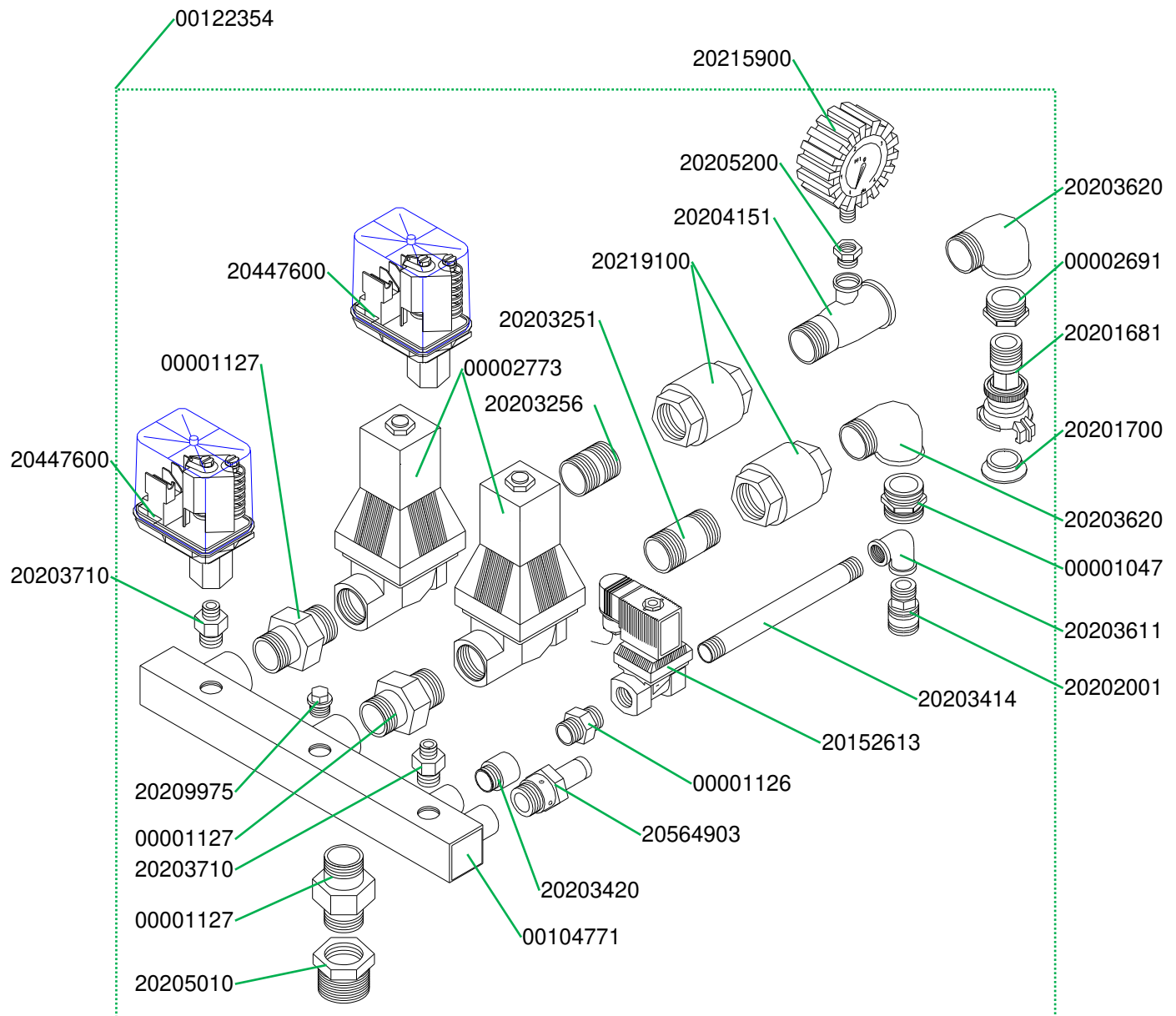
00089078



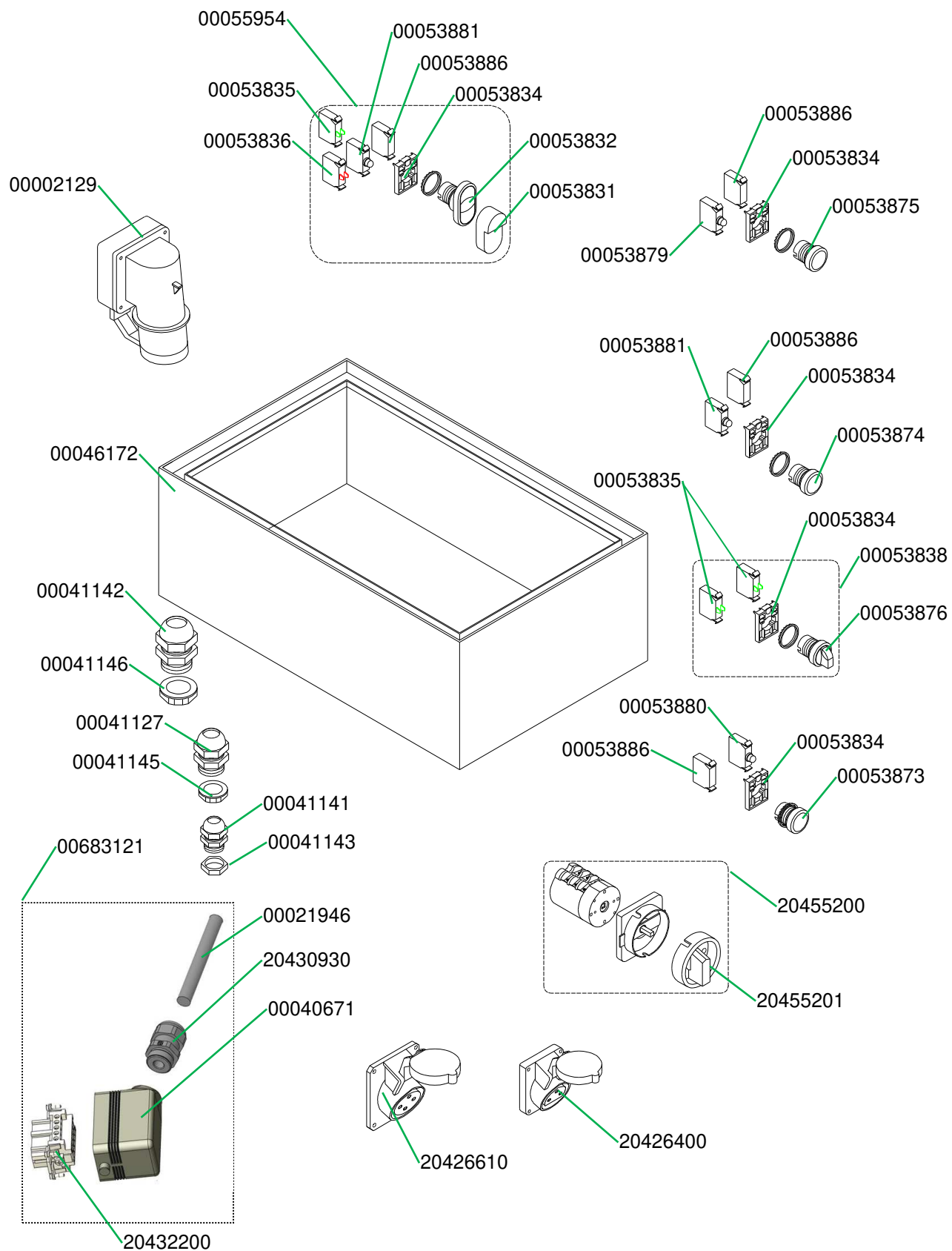
Drucksteuerung SILOJET III T kpl.
Pressure control for SILOJET III T cpl.



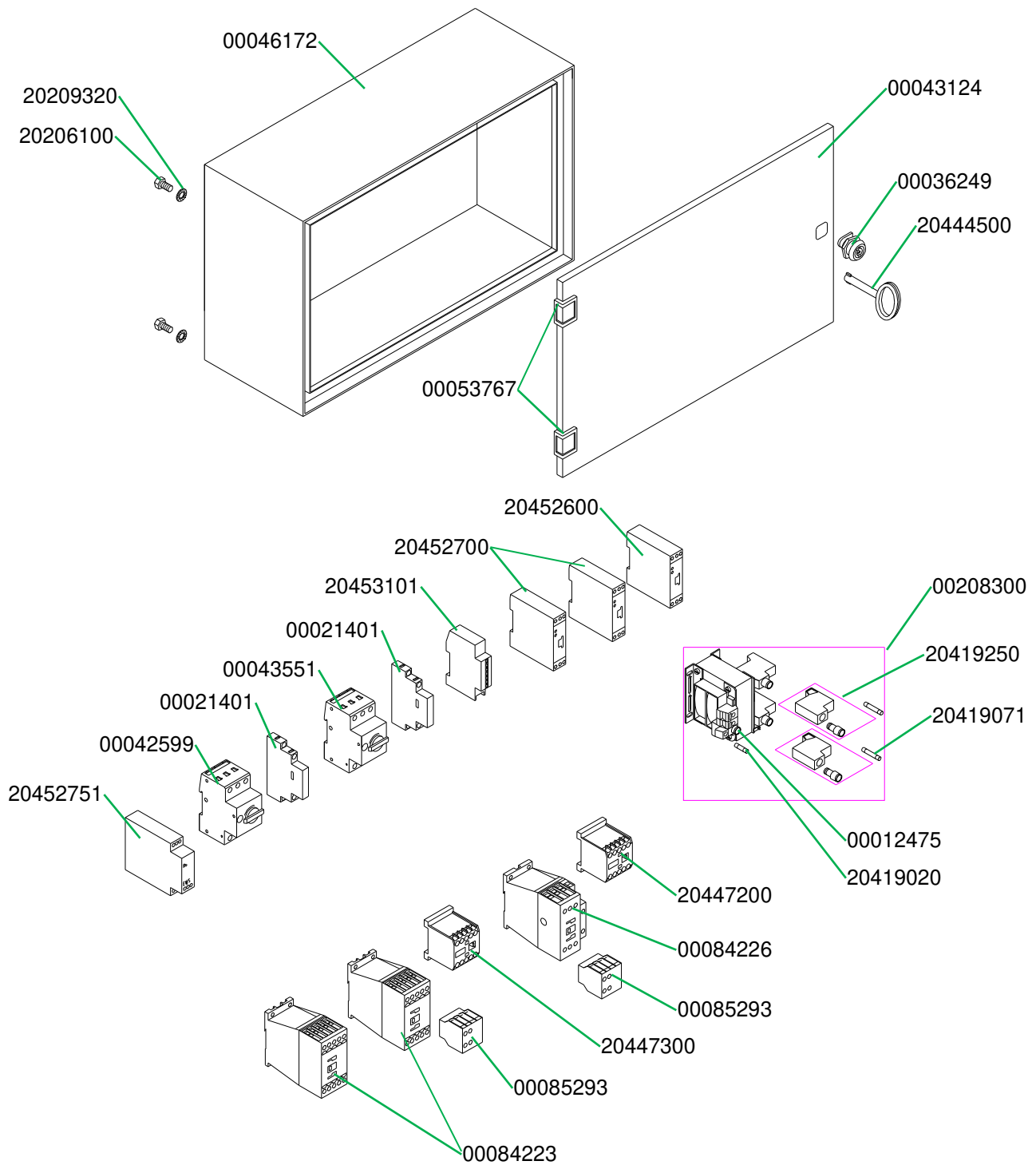
Drucksteuerung SILOJET 145 BDS komplett
Pressure control SILOJET 145 BDS ventilation system, complete



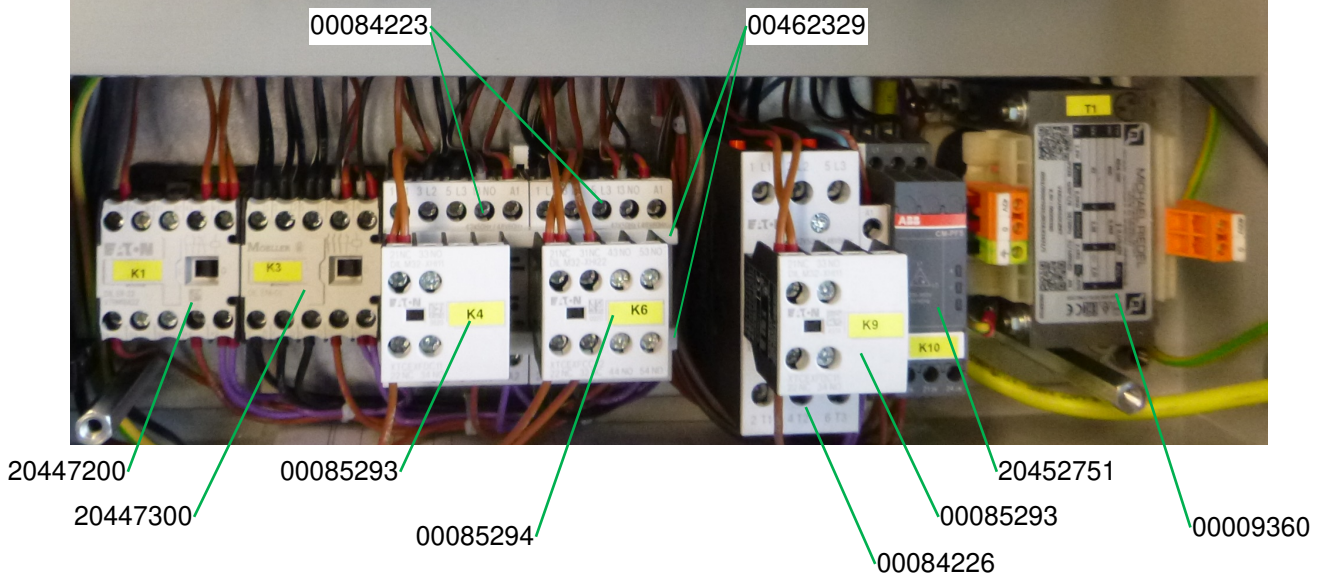
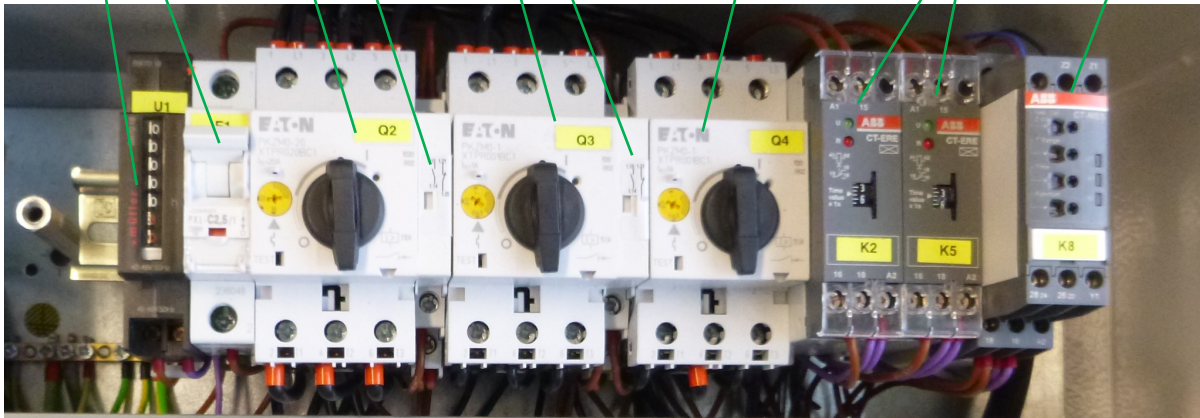
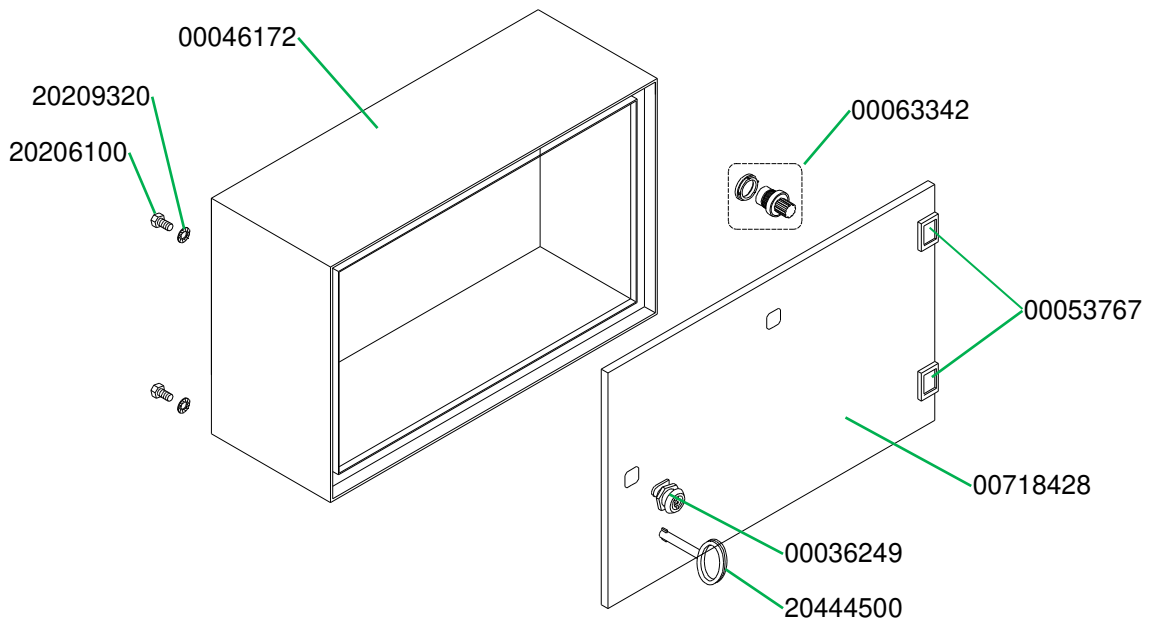
Schaltschrank SILOJET III ohne BDS Artikelnummer 00046174
Control box SILOJET III without BDS part number 00046174



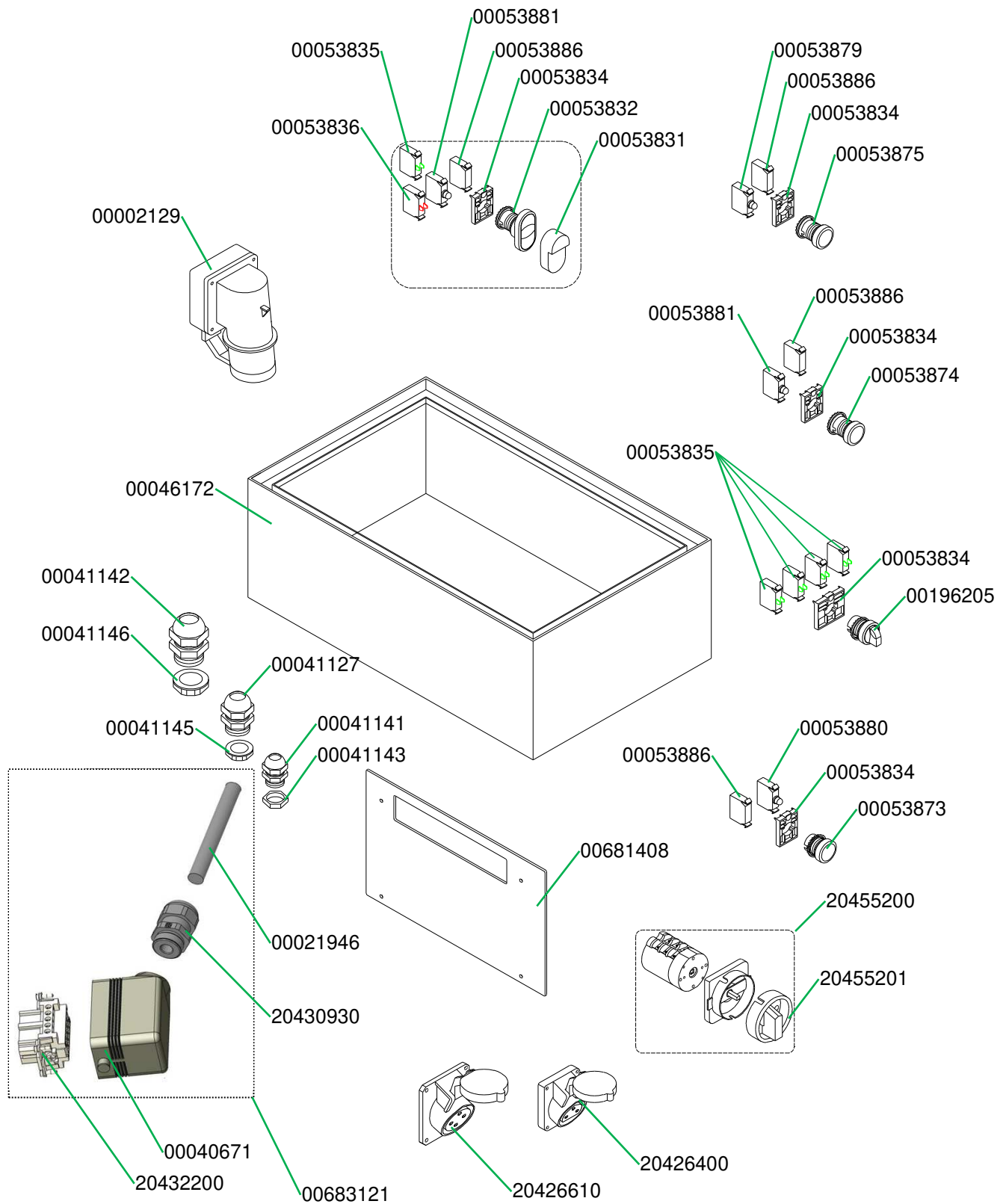
Schaltschrank SILOJET III ohne BDS Artikelnummer 00046174
Control box SILOJET III without BDS part number 00046174



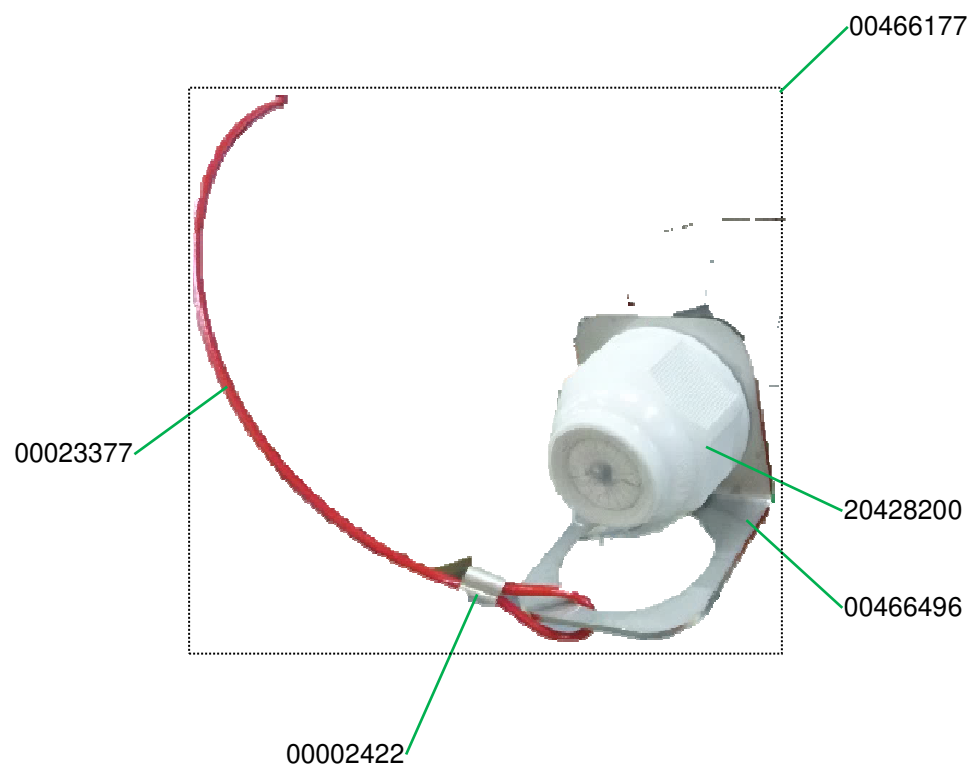
Control box SILOJET III plus part number 00681407



Schaltschrank SILOJET III plus Artikelnummer 00681407
Control box SILOJET III plus part number 00681407



Blindstecker Anforderung SILOMAT 42 V Artikelnummer 00466177
Dummy connector requirement SILOMAT 42 V part number 00466177



Technical drawing of the internal components of a control cabinet, showing various electrical components and their part numbers. The components are arranged in two rows within a grey metal enclosure.

Top Row Components (from left to right):

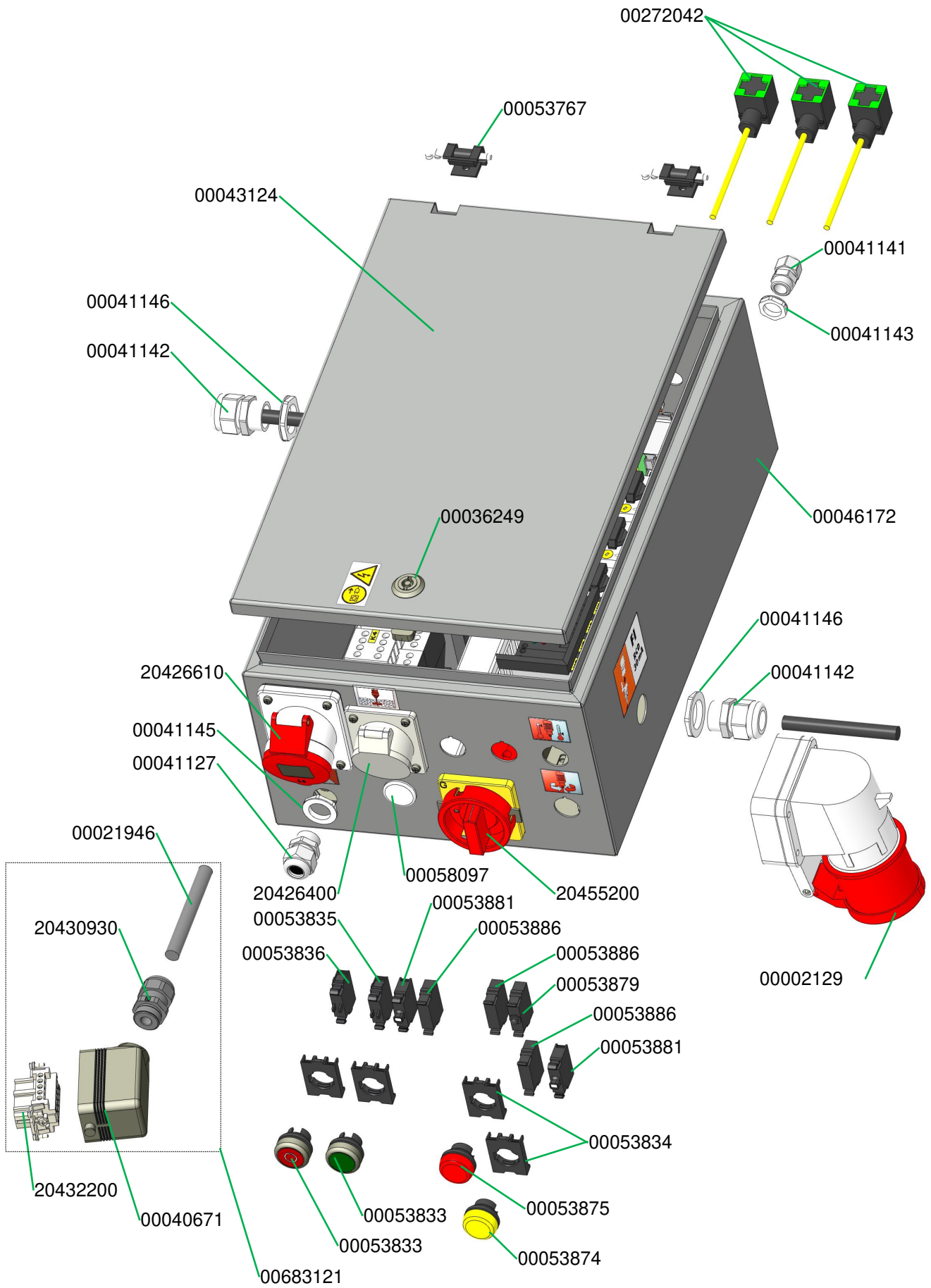
- Terminal block **K3** (part number 00085294)
- Terminal block **K4** (part number 00094268)
- Terminal block **K6** (part number 00085294)
- Terminal block **K14** (part number 00094268)
- Terminal block **K10** (part number 20452751)
- Terminal block **K9** (part number 00254600)
- Terminal block **K12** (part number 20448120)
- Terminal block **K1** (part number 20448120)
- Terminal block **F1** (part number 20448120)
- Terminal block **U1** (part number 20448120)

Bottom Row Components (from left to right):

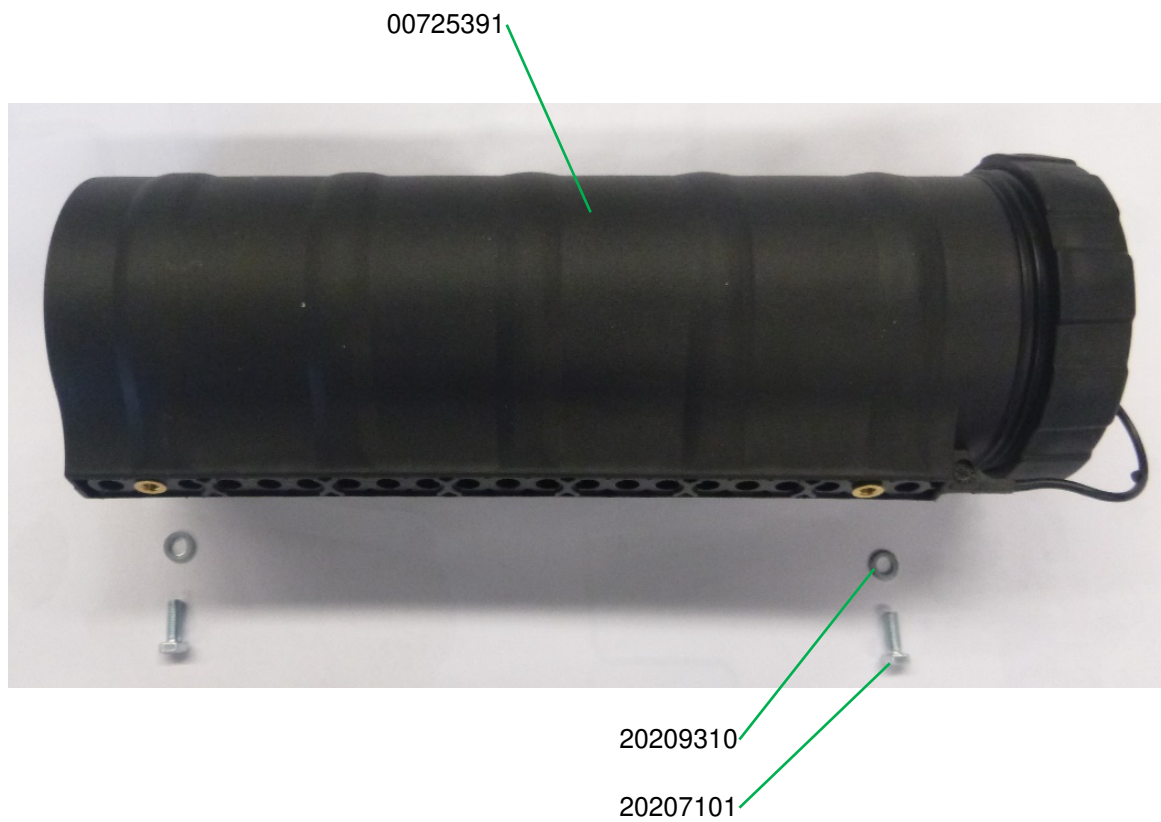
- Terminal block **K2** (part number 20452700)
- Terminal block **K5** (part number 20452700)
- Terminal block **K8** (part number 20452700)
- Terminal block **K11** (part number 20452700)
- Terminal block **Q2** (part number 00517685)
- Terminal block **Q3** (part number 00094273)
- Terminal block **Q4** (part number 00094273)
- Terminal block **T1** (part number 20453101)

Other Components and Part Numbers:

- Part number 20447300 points to the left side of the cabinet.
- Part number 20452600 points to the bottom row of components.
- Part number 00043551 points to the bottom row of components.
- Part number 00021401 points to the bottom row of components.
- Part number 00042599 points to the bottom row of components.
- Part number 00009360 points to the bottom row of components.



Dokumentenbox rund
Document box round



Zubehör Accessories



Empfohlenes Zubehör / Ausrüstung finden Sie im PFT Maschinen- und
Gerätecatalog oder unter
Recommended accessories / equipment can be found in the PFT machine
and device catalog or at
www.pft.net

PFT – ALWAYS AT YOUR SITE



Knauf PFT GmbH & Co. KG
Postfach 60 97343 Iphofen
Einersheimer Straße 53 97346 Iphofen
Deutschland

Telefon +49 9323 31-760
Telefax +49 9323 31-770
Technische Hotline +49 9323 31-1818

info@pft.net

www.pft.net