

# Operating manual

## PFT ZARGOMAT pro

Safety - Overview - Operation - Spare parts lists



Article number of the operating manual: 00 65 69 53

Article number PFT ZARGOMAT pro DN25-360°: 00 42 00 58



**Read the operating manual prior to starting any work!**

© Knauf PFT GmbH & Co. KG  
P.O. Box no. 60 97343 Iphofen  
Einersheimer Straße 53 97346 Iphofen  
Germany

Phone +49 9323 31-760  
Fax +49 9323 31-770  
Technical hotline +49 9323 31-1818

[info@pft.net](mailto:info@pft.net)  
[www.pft.net](http://www.pft.net)



<b>1</b>	<b>Inspection .....</b>	<b>5</b>	<b>13</b>	<b>Overview ZARGOMAT pro with hose cpl. ....</b>	<b>19</b>
1.1	Inspection by machine operator .....	5	13.1	Overview article number 00420058 ...	19
1.2	Periodic inspection .....	5			
<b>2</b>	<b>General information.....</b>	<b>6</b>	<b>14</b>	<b>Transport, packaging and storage .....</b>	<b>20</b>
2.1	Information regarding the operating manual .....	6	14.1	Safety instructions for transport .....	20
2.2	Information on the safety instructions.....	6	14.2	Transport checklist .....	20
2.3	Keep the manual for later use .....	6	<b>15</b>	<b>Packaging.....</b>	<b>20</b>
<b>3</b>	<b>Symbol explanation.....</b>	<b>6</b>	<b>16</b>	<b>Operation.....</b>	<b>21</b>
3.1	Limitation of liability .....	7	16.1	Safety .....	21
3.2	Copyright protection .....	8	<b>17</b>	<b>Commissioning.....</b>	<b>22</b>
3.3	Spare parts .....	8	17.1	Preparing the mortar hoses.....	22
3.4	Customer service.....	8	17.2	Connecting the PFT ZARGOMAT pro .....	23
<b>4</b>	<b>Safety .....</b>	<b>9</b>	<b>18</b>	<b>Applying mortar.....</b>	<b>23</b>
4.1	Operator responsibility.....	9	18.1	Unlock locking lever .....	23
<b>5</b>	<b>Operating personnel.....</b>	<b>10</b>	<b>19</b>	<b>Interruption of work .....</b>	<b>24</b>
5.1	Requirements .....	10	<b>20</b>	<b>Cleaning PFT ZARGOMAT pro.....</b>	<b>24</b>
5.2	Unauthorised individuals .....	11	20.1	Cleaning the mortar hose.....	24
<b>6</b>	<b>Proper use of the ZARGOMAT pro.....</b>	<b>11</b>	20.2	Disassemble sprayer for cleaning .....	25
6.1	Personal safety equipment.....	12	20.3	Cleaning the mortar hose.....	26
6.2	Special dangers .....	14	<b>21</b>	<b>Cleaning end .....</b>	<b>26</b>
<b>7</b>	<b>Safety devices .....</b>	<b>16</b>	<b>22</b>	<b>Maintenance.....</b>	<b>27</b>
7.1	Dealing with dangerous situations and accidents.....	16	22.1	Maintenance plan.....	27
7.2	Signs.....	17	<b>23</b>	<b>Disassembly.....</b>	<b>28</b>
<b>8</b>	<b>Technical data PFT ZARGOMAT pro .....</b>	<b>17</b>	23.1	Safety .....	28
8.1	General information .....	17	23.2	Disassembly .....	29
8.2	Connection.....	17	<b>24</b>	<b>Disposal.....</b>	<b>29</b>
8.3	Operating conditions.....	17	<b>25</b>	<b>Spare parts drawing, spare parts list .....</b>	<b>30</b>
<b>9</b>	<b>Sound power level .....</b>	<b>17</b>	25.1	Spare parts drawing ZARGOMAT pro Article no. 00420058 .....	30
<b>10</b>	<b>Vibrations .....</b>	<b>17</b>	25.2	Spare parts list ZARGOMAT pro Article no. 00420058 .....	30
<b>11</b>	<b>Decorative plaster attachment glue gun .</b>	<b>18</b>	25.3	PFT ZARGOMAT pro Article no. 00420063 .....	31
<b>12</b>	<b>Recommended accessories .....</b>	<b>18</b>			

## Inhaltsverzeichnis



25.4	Spare part drawing ZARGOMAT pro without mortar hose Article no. 00420063 .....	32	26	Index.....	34
25.5	Spare parts list ZARGOMAT pro without mortar hose Article no. 00420063 .....	33			



# 1 Inspection

## 1.1 Inspection by machine operator

- Prior to each shift, the machine operator has to examine the effectiveness of the control and safety devices, as well as the proper fitting of the protection devices.
- The safe working condition of construction machinery has to be checked by the machine operator during operation.
- If the safety devices show any defects or if any other defects are detected that compromise a safe operation, the supervisor has to be informed immediately.
- In case of defects that cause harm to persons, the operation of the construction machine has to be stopped to eliminate the defects.

## 1.2 Periodic inspection

- Construction machinery has to be inspected for their safe working condition in accordance with the operating conditions and the operational requirements as needed, however at least once a year by an expert.
- Pressure vessels have to undergo the prescribed expert inspections.
- The inspection results have to be documented and kept at least until the next inspection.

## 2 General information

### 2.1 Information regarding the operating manual

- This manual provides important information and instructions on the correct use of the equipment. Adherence to all defined safety and handling instructions is a prerequisite for a safe working environment.
- Additionally, the on-site accident prevention regulations and general safety guidelines for the equipment must be followed at all times.
- Read the manual carefully before starting any work! It is an integral part of the product and must be kept near the machine and accessible to operators at all times.
- Always include the operating manual when transferring the machine to third parties.
- The diagrams and illustrations shown in the manual are intended for better understanding of tasks and descriptions. They are not necessarily shown to the correct scale and may vary slightly from the actual equipment used.

### 2.2 Information on the safety instructions

These safety instructions provide important information on how to operate the unit. Precondition for safe working is compliance with all safety instructions and instructions given.

### 2.3 Keep the manual for later use

The operating manual must be available during the entire service life of the product.

## 3 Symbol explanation

### Warning symbols

Warnings are shown by symbols in this manual. The warnings themselves open with signal words that express the seriousness of the danger.

Adhere to these warnings at all times to avoid accidents, personal injury and equipment damage.



#### **DANGER!**

Indicates a dangerous situation that will lead to death or serious injury if it is ignored.



#### **WARNING!**

Indicates the possibility of a dangerous situation that could lead to death or serious injury if it is ignored.



## Symbol explanation

### Tips and recommendations



#### CAUTION!

Indicates the possibility of a dangerous situation that could lead to non-serious injury if it is ignored.



#### CAUTION!

Indicates the possibility of a dangerous situation that could lead to material damage if it is ignored.



#### NOTE!

*Contains useful tips and recommendations, plus further information on efficient and problem-free operation.*

### Special safety instructions

The following symbols are used in conjunction with safety instructions in order to illustrate certain types of danger.



#### DANGER!

#### Danger of death due to electric current!

Indicates a potentially life-threatening situation caused by electricity in the affected area. Non-compliance with the safety instruction could lead to death or serious injury. Work on electrical systems may only be carried out by specialist electricians.

## 3.1 Limitation of liability

All specifications and instructions in this manual have been compiled according to the currently valid norms and instructions, up-to-date technology and our many years of experience in the branch.

The manufacturer accepts no liability for damages caused under the following conditions:

- Non-compliance with the manual
- Improper operation
- Operation by untrained personnel
- Unauthorised rebuilding
- Technical changes
- Use of unauthorised spare parts

The actual scope of delivery may vary from the explanations and diagrams detailed here due to special models, additional order options and technological changes.

Additionally, the obligations defined in the delivery contract, the general terms and conditions, the delivery requirements of the manufacturer and the valid regulations at the time of contract conclusion all apply.

### 3.2 Copyright protection

Keep the manual and its contents confidential. It is only to be used by personnel who actively use the machine. Forwarding of the manual to third-parties without prior written permission from the manufacturer is not permitted.



**NOTE!**

*The specifications, text, illustrations, pictures and other representations within the manual are copyright protected and are subject to business copyright laws. Misuse of the manual is a criminal offence.*

All forms of reproduction – both in whole and in part – plus the utilisation or publication of the manual contents are not permitted without prior written approval by the manufacturer. Violation of these terms can lead to claims for compensation. We reserve all other further rights.

### 3.3 Spare parts



**WARNING!**

**Danger of injury due to incorrect spare parts!**

Incorrect or defective spare parts can lead to damage, improper functionality or complete system breakdowns. They can also negatively affect system safety.

Therefore:

- Only use original spare parts from the manufacturer.

Only purchase spare parts from approved dealers.

### 3.4 Customer service

Our customer hotline is available in case of technical queries.

Information on the respective contact partners can be found by telephone, fax, e-mail or on the Internet. The address of the manufacturer can be found on page 2.

Our employees are always happy to receive new information resulting from practical operation. This information may be used for future product improvements.





## 4 Safety

This section provides an overview of all important safety aspects. These offer optimal levels of safety for personnel and safe and problem-free operation.

Significant danger may result from non-compliance with the operating steps and safety instructions detailed in this manual.

### 4.1 Operator responsibility

The equipment is intended for business use. The operator is then subject to legal work safety obligations.

Apart from the work safety instructions detailed in this manual, all valid safety, accident prevention and environmental protection guidelines for the equipment must be adhered to. This especially applies to the following:

- The operator must be aware of the valid work safety regulations. They are also responsible for determining additional dangers resulting from the individual working conditions on the operating site. These additional dangers must be summarised as operational instructions for the correct use of the equipment.
- During the entire operation time of the equipment, the operator is responsible for coordinating their instructions with the current operational status and adjusting them as required.
- The operator is responsible for clearly allocating and defining the responsible parties for installation, operation, maintenance and cleaning.
- The operator must ensure that all persons employed with the equipment have read and understood the manual. Additionally, the operator must also carry out regular employee training and inform them of the dangers associated with equipment use.

The operator is also responsible for the technical functionality and condition of the equipment. The following rules apply here:

- The operator must make sure that the maintenance intervals detailed in the manual are adhered to.
- The operator must have all safety devices regularly checked for functionality and completeness.
- The operator must provide personnel with the necessary safety equipment.

## 5 Operating personnel

### 5.1 Requirements



#### **WARNING!**

**Danger of injury due to insufficient training and qualifications!**

Improper use of the equipment can lead to serious personal injury and material damage.

Therefore:

- Only have certain tasks carried out by the responsible persons detailed in the individual chapters of this manual.
- Contact specialists in case of doubt.

The following qualifications are specified for various tasks within this manual:

#### ■ **Authorised personnel**

Instructed by the operator on tasks and the possible dangers of improper operation.

#### ■ **Specialists**

Due to their professional qualifications, experience and knowledge of the system, specialists are able to work independently and recognise possible dangers without special instructions.

#### ■ **Electricians**

Due to their professional qualifications, experience and knowledge of system standards, electricians are able to work independently on electrical systems and recognise possible dangers without special instructions.

Electricians are specially trained for the work environment in question and are aware of the relevant standards and instructions.

Only persons that carry out their work responsibly are permitted to work with the system. Persons with impaired reactions (e.g. due to drugs, alcohol or medication) are not permitted.

Observe the specific business and age regulations when selecting personnel on-site.



## 5.2 Unauthorised individuals



### **WARNING! Unauthorised individuals are put at risk!**

Unauthorised individuals that do not fulfil the requirements here are not fully aware of the dangers in the work area.

Therefore:

- Keep unauthorised individuals away from the work area.
- In case of doubt, ask the persons involved and guide them away from the work area.
- Stop operation as long as unauthorised individuals are found within the work area.

## 6 Proper use of the ZARGOMAT pro

*The system is only intended for use under the conditions detailed below*

- *Casting of frames.*
- *Application of adhesive mortar on boards for thermal insulation composite system.*
- *Renovation of quarry stone masonry.*
- *Grouting of masonry.*
- *Casting of pavement and joints.*
- *Injecting mortar.*

## Proper use of the ZARGOMAT pro



### WARNING!

#### Danger due to improper use of the machine!

Improper or unauthorised additional use of the system can lead to dangerous situations.

Therefore:

- Only use the machine as intended.
- Always observe all processing guidelines from the material manufacturer.
- Adhere to all specifications in this manual to the letter.
- The following system uses must be avoided. They are not authorised:
- Do not use in the foodstuff or pharmaceutical industries

We accept no responsibility for damages caused by improper or unauthorised use.

The operator is liable for all damages caused by improper or unauthorised use.

## 6.1 Personal safety equipment

In order to minimise negative effects on personal health, personal safety equipment must be worn during operation.

- Always wear the necessary safety equipment for each individual task.
- Pay attention to the signs in the work area regarding personal safety equipment.

### Always wear

Always wear the following during all work:



#### Protective suit

The protective suit is tight-fitting, rips easily if caught, has narrow sleeves and has no protruding parts. It is primarily intended as protection from being caught by movable machine parts.

Do not wear rings, chains and other jewellery.



#### Safety shoes

Protects against heavy falling parts and slipping on slippery surfaces.



## Proper use of the ZARGOMAT pro



### Safety goggles

Protects the eyes from flying projectiles and liquid splashes.



### Light breathing protection

Protects against dangerous dust.



### Ear protection

Protects against damage caused by loud noises.



### Safety helmet

Protects against falling and flying parts and materials.



### Safety gloves

Protects hands from friction, scraping, punctures or deep injuries as well as from contact with hot surfaces.

### Wear for special tasks

Special safety equipment is necessary for certain specialist tasks. These are specially indicated in the individual manual chapters. These special pieces of equipment are as follows:



### Face guard

Protects the eyes and face from flames, sparks or embers as well as from hot particles or exhaust gases.

## Proper use of the ZARGOMAT pro



### 6.2 Special dangers

The following section details other elements of risk that can occur according to the risk assessment.

Pay attention to the safety instructions and warnings in the other chapters in order to reduce health risks and avoid dangerous situations.

#### Electric current



##### **DANGER!**

##### **Danger of death due to electric current!**

Contact with live components can lead to death or serious injury. Damage to electrical insulation or individual components can be potentially life-threatening.

Therefore:

- If insulation damage occurs, switch off the electrical supply immediately and organise repairs.
- Work on electrical systems should only be made by qualified electricians.
- When working on electrical systems, first ensure that they are completely switched off and free of voltage.
- Before starting maintenance, cleaning or repair work, switch off the power supply and secure it against being switched back on again.
- Do not bypass fuses or disable them. Pay attention to the correct amp reading when replacing fuses.
- Keep electrical parts away from sources of moisture. This can lead to a short-circuit.

#### Escaping material



##### **DANGER!**

##### **Danger of injury due to escaping material!**

Escaping material can cause injuries to the eyes and face.

Therefore:

- Always wear protective goggles.
- When working, always stand so that escaping mortar cannot hit you.



## Proper use of the ZARGOMAT pro

### Noise



#### **WARNING!**

##### **Danger of damage to hearing!**

The loud noises associated with the work area can cause serious damage to hearing.

Therefore:

- Always wear ear protection when working.
- Only remain in the danger zone for as long as absolutely necessary.

### Dangerous dust



#### **WARNING!**

##### **Danger of health problems due to dust!**

Inhaled dust can lead to long-term lung damage or other negative effects on health.

Therefore:

- Always wear light breathing protection in the danger zone.

### Moving parts



#### **WARNING!**

##### **Danger of injury due to moving parts!**

Rotating and oscillating parts can cause serious injuries.

Therefore:

- Do not reach into or handle moving parts during operation.
- Do not open safety covers during operation.
- Pay attention to run-down times:  
Before opening covers, ensure that parts are no longer moving.
- Always wear tight-fitting clothing when working in the danger zone.

### Dirt and other impedances



#### **CAUTION!**

##### **Tripping hazards due to dirt and other impedances!**

Dirt and other impedances can form a slipping or tripping hazard, and can lead to significant injuries.

Therefore:

- Always keep the work area clean.
- Remove objects when they are no longer needed.
- Indicate tripping hazards with yellow and black tape.

## 7 Safety devices



### **WARNING!**

#### **Danger of death due to non-functioning safety devices!**

Safety devices provide the highest possible levels of operational safety. Although they make processes more complicated, they must never be disabled. Safety is only guaranteed when safety devices are intact.

Therefore:

- Before starting work, check that the safety devices are correctly installed and are fully functional.
- Never disable the safety devices.
- Do not obstruct access to safety devices such as emergency stop keys, trip wires etc.

### 7.1 Dealing with dangerous situations and accidents

#### **Preventative measures**

- Always be prepared in case of accidents or fires!
- Make first-aid equipment (bandages, blankets etc.) and fire extinguishers easily accessible.
- Inform your personnel about accident reporting, first-aid and rescue equipment.
- Keep access roads free for emergency service vehicles.

#### **When accidents happen...**

- Activate the emergency stop immediately.
- Organise first-aid measures.
- Remove persons from the danger zone.
- Inform the responsible on-site department.
- Notify the emergency services.
- Clear access roads for emergency service vehicles.





## Technical data PFT ZARGOMAT pro

### 7.2 Signs

The following symbols and notices are located in the work area. They refer to the immediate vicinity in which they are attached.



#### **WARNING!**

#### **Danger of injury due to illegible symbols!**

Over the course of time, labels and signs can become dirty or unreadable.

Therefore:

- Always keep all safety, warning and operating notices in a legible condition.
- Replace damaged signs or labels immediately.

## 8 Technical data PFT ZARGOMAT pro

### 8.1 General information

#### Weight

Detail	Value	Unit
PFT ZARGOMAT pro with hose cpl.	3,1	kg
PFT ZARGOMAT pro without hose	1,1	kg

### 8.2 Connection

Detail	Value
Coupling	25M-Teil

### 8.3 Operating conditions

#### Environment

Detail	Value	Unit
Temperature range	5-40	°C

## 9 Sound power level

Guaranteed sound power level LWA

95dB (A)

## 10 Vibrations

Weighted effective value of acceleration to which the upper body parts are exposed <2.5 m/s<sup>2</sup>

## Decorative plaster attachment glue gun



### 11 Decorative plaster attachment glue gun



With the attachment for decorative plaster and reinforcing mortar, the complete application - bonding and reinforcing air assisted for thermal insulation composite systems with only one sprayer, the PFT ZARGOMAT pro can be done.

Decorative plaster attachment, glue gun nozzle 10 mm

Article no. 00 01 97 87

*Fig. 1: Decorative plaster attachment*

### 12 Recommended accessories

Extension for remote control cable - 16 m

Article no. 00 08 80 49

Extension for remote control cable - 25 m

Article no. 20 45 69 31

Extension for remote control cable - 50 m

Article no. 20 45 69 34



## 13 Overview ZARGOMAT pro with hose cpl.

### 13.1 Overview article number 00420058

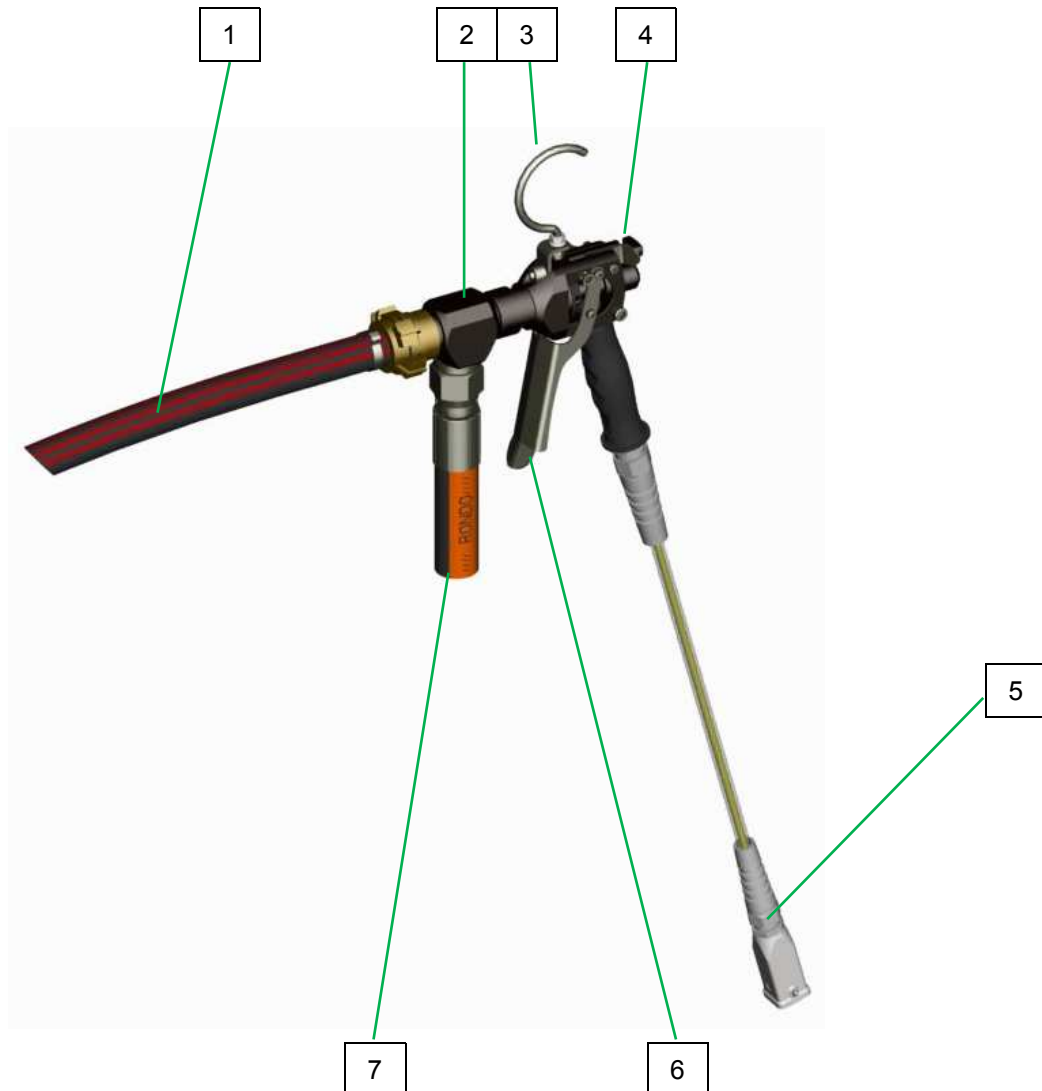


Fig. 2: Overview ZARGOMAT pro

- 1 Mortar hose
- 2 Rotatable distributor
- 3 Hook
- 4 Locking lever
- 5 Connection for remote control
- 6 Lever
- 7 Connection for mortar hose

## 14 Transport, packaging and storage

### 14.1 Safety instructions for transport

#### Improper transport



#### CAUTION!

#### Damage can be caused by improper transport!

Significant damage may occur if the equipment is transported incorrectly.

Therefore:

- Proceed with care when unloading packages and transporting goods on-site. Always observe the symbols and instructions on the packaging.
- Only remove packaging immediately before assembly.

### 14.2 Transport checklist

Inspect the goods for damage and missing parts immediately after delivery.

If external transportation damage can be seen, proceed as follows:

- Do not accept the delivery, or accept it only under reservations.
- Note the damage on the transportation documents or the delivery note of the carrier.
- Submit the appropriate claim.



#### NOTE!

*Always submit a claim for the defects as soon as they are detected. Damage claims can only be accepted within the applicable deadlines for submission.*

## 15 Packaging

#### Packaging information

Individual packages are packed according to the applicable transportation requirements. Only environmentally-friendly materials were used for the packaging.

The packaging is intended to protect individual components from harm during transportation, corrosion and other damage up to the point of assembly. Do not destroy the packaging and only remove it shortly before assembly.

Provided no agreements for the return of the packaging have been made, separate the materials according to type and size and reuse or recycle them accordingly.



## Handling the packaging materials



### CAUTION!

**Environmental damage can result from improper disposal of materials!**

Packaging materials are valuable resources and can often be reused or recycled.

Therefore:

- Dispose of packaging materials in an environmentally sound manner.
- Observe locally applicable waste disposal guidelines. If necessary, contract a specialist waste disposal company.

# 16 Operation

## 16.1 Safety

### Basic information



### WARNING!

**Danger of injury due to improper operation!**

Improper operation can lead to serious injuries or equipment damage.

Therefore:

- Carry out all operating steps as described in this operating manual.
- Before starting any work, ensure that all covers and protective devices are installed and functioning properly.
- Never disable protective devices during operation.
- Keep the operating area clean and tidy. Components and tools that are stacked on one another or left lying around can cause accidents.

### Personal protective equipment

All machine operators must wear the following protective equipment:

- Protective work clothing
- Safety goggles
- Safety gloves
- Safety shoes
- Ear protection



### NOTE!

*The warning signs illustrated relate to additional protective equipment that must be worn for particular working conditions.*

## Commissioning



### Safety

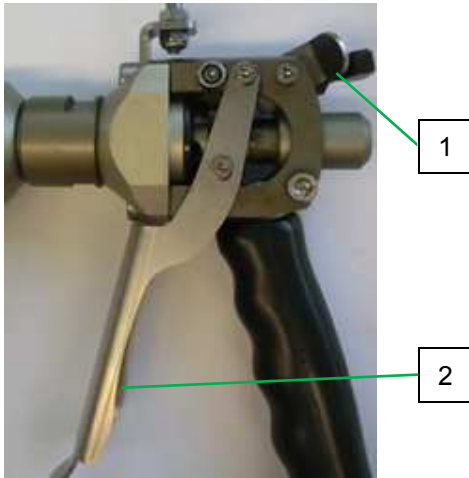


Fig. 3: Lock the lever



#### WARNING!

**Risk of injury due to improper operation!**  
**Abzugshebel sperren:**

- Press the locking lever (1) upwards to lock the lever (2).

## 17 Commissioning

### 17.1 Preparing the mortar hoses



Fig. 4: Preparing the mortar hose

1. Flush mortar hose with water.
2. Completely empty the mortar hose of water.
3. Prime the mortar hose by wetting it with about 1 litre of wallpaper paste.
4. Connect the mortar hose (1) to the mortar pressure gauge.
5. Allow the machine to run until all the wallpaper paste has emerged from the end of the mortar hose.

#### NOTE!



*Make sure the couplings are clean and connected properly, and do not leak. Dirty couplings and rubber seals are leaky and allow water under pressure to escape, which inevitably leads to blockages.*

*Carefully secure risers so that they do not tear away from their own weight.*



#### DANGER!

Never detach hose couplings if the mortar hoses are under pressure (check mortar pressure gauge). Mixed material can escape under pressure and lead to serious injuries, especially eye injuries.

Hoses that tear off can lash wildly and injure those standing nearby!



## 17.2 Connecting the PFT ZARGOMAT pro

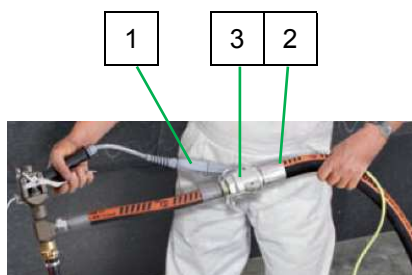


Fig. 5: Spray gun

1. Connect remote control (1).
2. Connect mortar hose (2) to the ZARGOMAT pro (3).

## 18 Applying mortar



### **DANGER!** **Danger of injury due to leaking mortar!**

Escaping mortar can lead to injuries to the eyes and face.

- Never look into the spray gun.
- Always wear protective goggles.
- Always position the machine so that you cannot be hit should mortar escape.
- Never direct spray gun against people or animals.

### 18.1 Unlock locking lever



Fig. 6: Locking lever

1. Press down on the locking lever (1) on the spray gun ZARGOMAT pro.

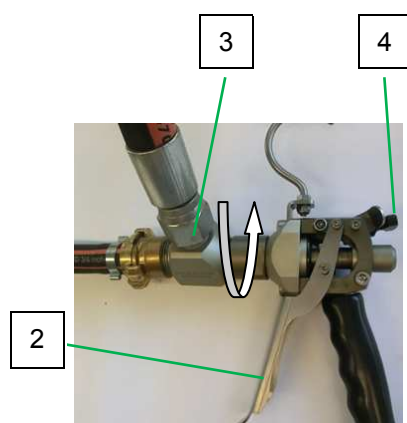


Fig. 7: Locking lever

2. This unlocks the lever (2).
3. Hold the sprayer in the direction of the object to be processed.
4. Ensure that nobody is in the discharge area of the spraying gun.
5. Press the lever.



### **NOTE!**

To work, the housing (3) can be locked with material hose in four different positions:

- Press the locking lever.
- By rotation the housing, the housing snaps into the disired position.

## 19 Interruption of work



### NOTE!

Generally, the setting times of the materials to be processed must be observed:

Clean the equipment and hoses as appropriate for the setting time of the material and the length of the interruption (take outdoor temperature into account).

Observe the guidelines of the material manufacturer regarding interruptions.

## 20 Cleaning PFT ZARGOMAT pro

### 20.1 Cleaning the mortar hose

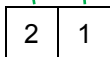


Fig. 8: Mortar pressure at 0 bar

The spraying gun must be cleaned daily after work and before prolonged pauses.

1. To switch off the machine.
2. Check the mortar pressure gauge (3) to see if the pressure has fallen to "0 bar".



### DANGER!

#### Overpressure on the machine!

When opening machine components, these can fly open in an uncontrolled manner and injure the operator.

- Only open the machine if the pressure has fallen to 0 bar.

3. Release cam lever (2) and uncouple mortar hose (1) from the mortar pressure gauge.



### NOTE!

The mortar hoses and spray gun must be cleaned immediately at the end of work.



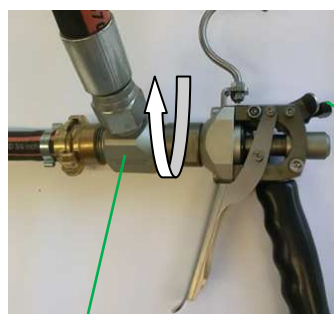


## 20.2 Disassemble sprayer for cleaning



### NOTE!

Remnants of the material that collect in the interior part of the mortar hose and the spraying gun can cause damage, increase in quantity and constrict the cross-section. Consequently, the mortar hoses must be clean, so that it will be possible to begin the next pumping operation in a fault-free manner.

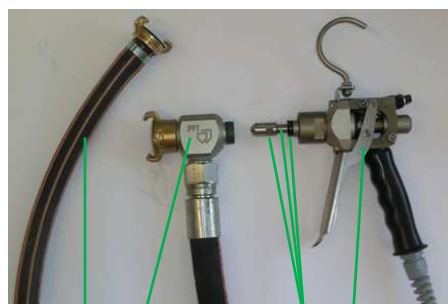


2

1

1. Push the housing locking lever (1) upwards.
2. By turning the housing (2) in the direction of the arrow, the housing snaps into place.

Fig. 9: Disassemble sprayer



4

2

5

3

3. Screw the handle of the pistol with the base body (3) from the housing (2).
4. Clean housing (2) with brush inside.
5. Remove and clean material hose (4).
6. Clean conical needle, o-ring and guide sleeve.
7. Grease conical needle, o-ring guide sleeve (5) after cleaning.



### Note!

Keep ZARGOMAT pro clean. Before all things clean connections and threads of material residues.

Fig. 10: Sprayer

## Cleaning end



### 20.3 Cleaning the mortar hose

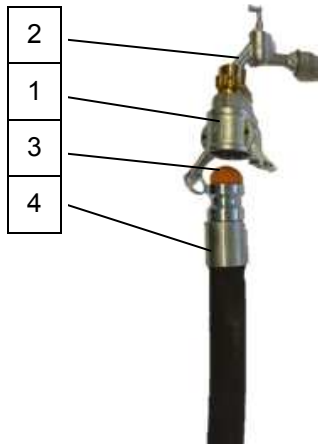


Fig. 11: Connect cleaner coupling

1. Connect the cleaner coupling (1) to the water tap (2).
2. Press the water saturated sponge ball (3) into the mortar hose (4).



#### NOTE!

*Do not rinse the mortar hoses with water before. The material has to be pushed out of the hoses with the sponge ball.*

3. Connect the mortar hose (4) with the sponge ball to the cleaner coupling (1).
4. Open the water tap until the sponge ball exits the spraying device.
5. In case of strong soiling repeat this process.

## 21 Cleaning end



Fig. 12: Complete

1. After the end of cleaning, re-fill the spraying gun.



## 22 Maintenance

### Basic information



#### **WARNING!**

##### **Risk of injury due to improperly carried out maintenance work!**

Improper maintenance can lead to severe injuries or considerable property damage.

Therefore:

- Ensure order and safety at the assembly site! Loose, stacked components or components lying about can cause accidents.
- If components were removed, ensure proper assembly, put back all fastening elements and observe torque indications for screws.

### Electrical system



#### **DANGER!**

##### **Danger of death from electric current!**

There is danger to life if you come in contact with live parts. Activated electrical components can carry out uncontrolled movements and cause serious injuries.

Therefore:

- Switch off the energy supply before starting any work and secure against restarting.
- Disconnect the power supply by removing the connection cable

### 22.1 Maintenance plan

After finishing the maintenance works and prior to switching on the machine, the following steps have to be carried out:

1. Check all previously loosened screw connections for secure fit.
2. Check if all previously removed safety systems and covers are properly reinstalled.
3. Ensure that all used tools, materials and other pieces of equipment were removed from the work area.
4. Clean the work area and remove any spilled materials such as liquids, processing materials or similar.
5. Ensure that all safety systems of the installation work perfectly.

## 23 Disassembly

The machine must be disassembled and disposed of in an environmentally sound manner after reaching the end of its useful life.

### 23.1 Safety

#### Personnel

- Disassembly may only be performed by specially trained personnel.
- Work on electrical systems may only be carried out by qualified electricians.

#### Basic information



#### **WARNING!**

#### **Danger of injury due to improper disassembly!**

Residual energy, sharp-edged components and corners on and around the device or on the tools required can cause injuries.

Therefore:

- Ensure there is adequate space before starting any work.
- Exercise caution when working with open, sharp-edged components.
- Keep the work area clean and tidy. Components and tools that are stacked on one another or left lying around can cause accidents.
- Disassemble components correctly. Bear in mind that individual components can be heavy. Use lifting equipment if necessary.
- Secure components so they do not fall or tip over.
- Consult your dealer if questions arise.

#### Electrical system



#### **DANGER!**

#### **Danger of death due to electric current!**

Contact with live components can lead to death or serious injury. Live electrical components can move uncontrollably and cause serious injury.

Therefore:

- Switch off and completely disconnect the power supply before starting disassembly.



## 23.2 Disassembly

When decommissioning, clean the unit and dismantle it according to valid work safety and environmental protection regulations.

Before beginning with disassembly:

- Switch off the machine and secure it against being switched on again.
- Disconnect the entire energy supply from the machine and discharge the residual energy.
- Remove operating and auxiliary materials as well as residual processing materials and dispose of them in an environmentally sound manner.

## 24 Disposal

Provided no return or disposal agreements have been made, recycle the disassembled parts:

- Metallic parts are scrapped.
- Plastic elements are recycled.
- Remaining components are disposed of sorted by individual material.



### **CAUTION!**

**Environmental damage can result from improper disposal of materials!**

Electrical scrap and components, lubricants and other process materials are subject to special guidelines and may only be disposed of by approved waste disposal specialists!

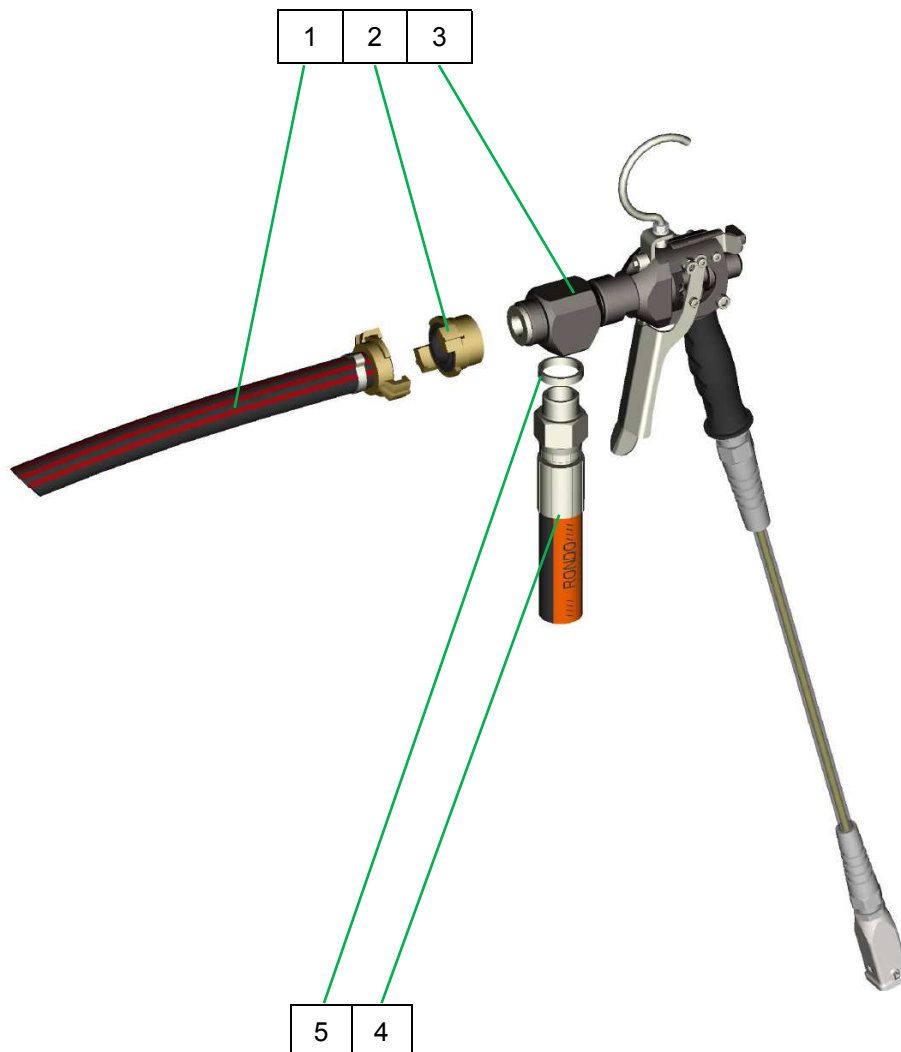
Local authorities and waste disposal specialists can provide more details on the correct disposal of materials.

## Spare parts drawing, spare parts list



## 25 Spare parts drawing, spare parts list

### 25.1 Spare parts drawing ZARGOMAT pro Article no. 00420058



### 25.2 Spare parts list ZARGOMAT pro Article no. 00420058

ITEM	Qty	Article no.	Article description
1	1	00 02 03 89	Glue attachment for glue gun
2	1	20 20 11 00	Geka coupling 1" internal thread (packing unit = 10 pcs)
3	1	00 42 00 63	ZARGOMAT pro DN25-360° without mortar hose
4	1	00 42 00 60	Mortar hose 1.5 m 25 female part / 3/4" for ZARGOMAT pro
5	1	00 42 94 00	Spacer disc D33 x d28 x 6 VA



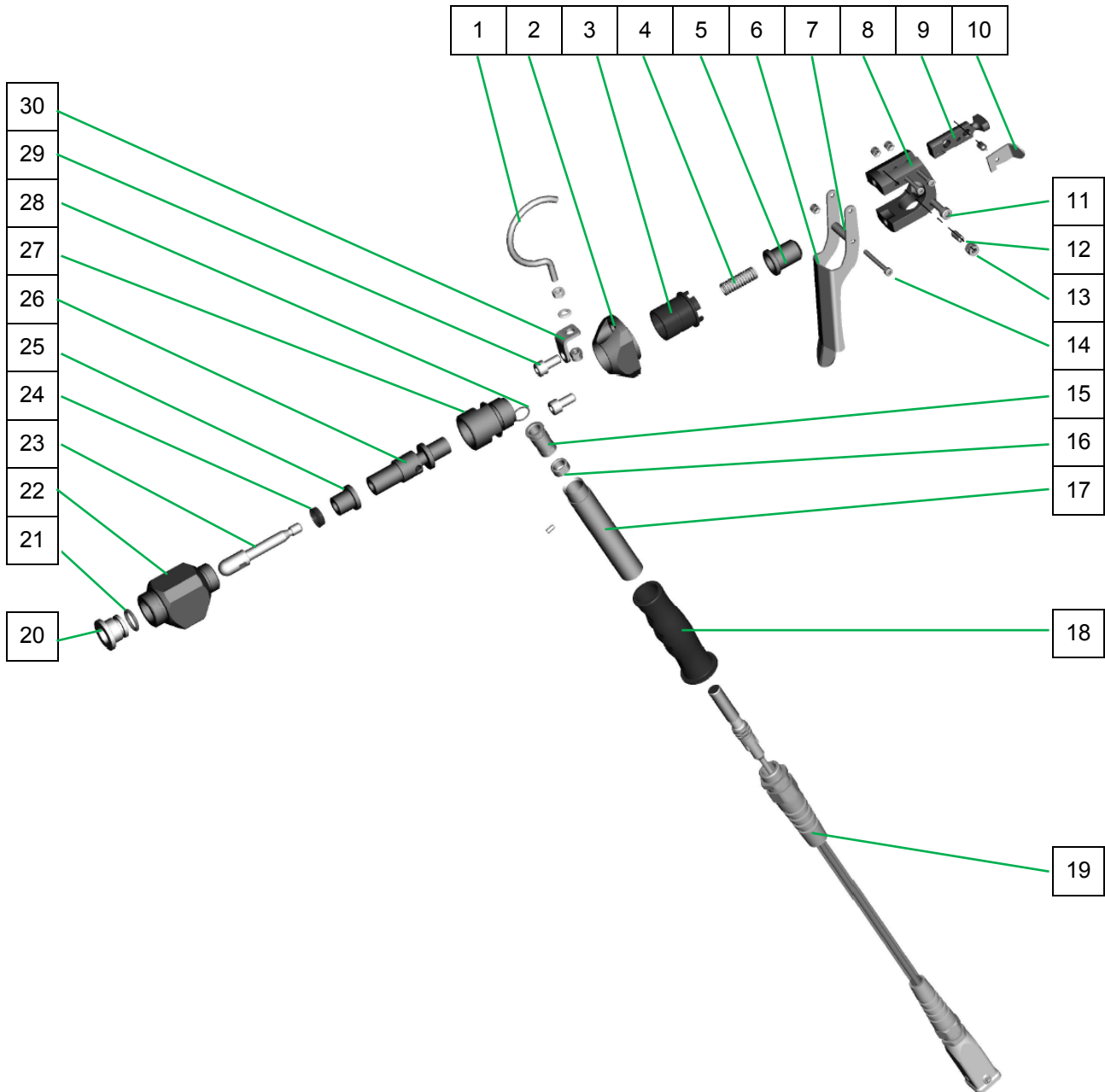
### 25.3 PFT ZARGOMAT pro Article no. 00420063



## Spare parts drawing, spare parts list



### 25.4 Spare part drawing ZARGOMAT pro without mortar hose Article no. 00420063







## Spare parts drawing, spare parts list

### 25.5 Spare parts list ZARGOMAT pro without mortar hose Article no. 00420063

ITEM	Qty	Article no.	Article description
1	1	00 46 28 59	Suspension hooks ZARGOMAT pro
2	1	00 46 27 64	Cover housing base body ZARGOMAT pro
3	1	00 46 27 89	Grooved nut for cover ZARGOMAT pro
4	1	00 46 28 36	Pressure spring
5	1	00 46 27 72	Guide sleeve for base body ZARGOMAT pro
6	1	00 46 28 00	Handle for base body ZARGOMAT pro
7	1	00 46 28 03	Slide roll handle ZARGOMAT pro
8	1	00 46 27 60	Housing base body ZARGOMAT pro
9	1	00 46 27 87	Locking lever housing ZARGOMAT pro
10	1	00 46 27 94	Locking lever for base body ZARGOMAT pro
11	1	00 02 32 59	Cylinder screw with hexagon socket M6 x 30, galvanised
12	1	00 46 28 40	Pressure piece
13	1	20 20 62 00	Safety nut M6
14	2	00 03 56 95	Hexagonal M 4x40 galvanised
15	1	00 46 29 26	Clamping sleeve ZARGOMAT pro, aluminium
16	1	00 46 29 38	Nut, aluminium for ZARGOMAT pro
17	1	00 46 27 80	Sleeve holding handle ZARGOMAT pro
18	1	00 46 29 08	Plastic handle ZARGOMAT pro
19	1	00 41 88 37	Sensor, inductive for JETSET pro, complete
20	1	00 46 05 48	Connection piece with cone ZARGOMAT pro
21	1	00 46 05 52	O-Ring 16 x 3,0
22	1	00 46 27 77	Housing T-distributor ZARGOMAT pro
23	1	00 46 05 56	Cone needle ZARGOMAT pro
24	1	00 46 05 58	Sealing ring D = 10mm ZARGOMAT pro
25	1	00 46 28 22	Guide bushing D24x20lg ZARGOMAT pro
26	1	00 46 27 55	Shaft for guide bushing ZARGOMAT pro
27	1	00 46 27 92	Extension cover ZARGOMAT pro
28	1	00 46 29 41	O-Ring 12 x 1,5
29	2	20 20 97 10	Cylinder screw with hexagon socket M8 x 16, galvanised
30	1	00 46 27 98	Angle suspension hook for ZARGOMAT pro



## 26 Index

Accidents .....	16	Maintenance plan .....	27
Applying mortar .....	23	Moving parts .....	15
Cleaning end .....	26	Noise .....	15
Cleaning PFT ZARGOMAT pro .....	24	<b>Operating conditions</b> .....	17
Cleaning the mortar hose .....	24, 26	Operating manual .....	6
<b>Commissioning</b> .....	22	Operating personnel .....	10
Connecting the PFT ZARGOMAT pro .....	23	Operation .....	21
<b>Connection</b> .....	17	Operator responsibility .....	9
<b>Contact partner</b> .....	8	Overview article number 00420058 .....	19
Copyright protection .....	8	<b>Overview ZARGOMAT pro with hose cpl.</b> .....	19
Customer service .....	8	Packaging .....	20
Dangerous dust .....	15	Packaging .....	20
Dangerous situations .....	16	Periodic inspection .....	5
Decorative plaster attachment glue gun .....	18	Personal safety equipment .....	12
Dirt .....	15	Personnel	
Disassemble sprayer for cleaning .....	25	Disassembly .....	28
Disassembly .....	29	PFT ZARGOMAT pro Article no. 00420063 .....	31
Disassembly .....	28	Preparing the mortar hoses .....	22
Disposal .....	29	Proper .....	11
Ear protection .....	13	Protective equipment for operators .....	21
Electric current .....	14	Protective suit .....	12
Electricians .....	10	Recommended accessories .....	18
Face guard .....	13	Requirements .....	10
General information .....	6	Safety .....	9, 28
<b>General information</b> .....	17	Safety .....	21
Index .....	34	Safety devices .....	16
Information on the safety instructions .....	6	Safety gloves .....	13
Inspection .....	5	Safety goggles .....	13
Inspection by machine operator .....	5	Safety helmet .....	13
Instruction .....	10	Safety instructions for transport .....	20
Interruption of work .....	24	Safety shoes .....	12
Keep the manual for later use .....	6	Signs .....	17
Labels .....	17	Sound power level .....	17
Light breathing protection .....	13	Spare part drawing ZARGOMAT pro without mortar hose Article no. 00420063 .....	32
Limitation of liability .....	7	Spare parts .....	8
Maintenance .....	27		



Spare parts drawing ZARGOMAT pro Article no. 00420058 .....	30	Symbol explanation .....	6
Spare parts drawing, spare parts list .....	30	Symbols in the danger zone .....	17
Spare parts list ZARGOMAT pro Article no. 00420058 .....	30	<b>Technical data PFT ZARGOMAT pro</b> .....	17
Spare parts list ZARGOMAT pro without mortar hose Article no. 00420063 .....	33	transport.....	20
Special dangers .....	14	Transport checklist.....	20
Specialists .....	10	Unauthorised individuals.....	11
Storage .....	20	Unlock locking lever .....	23
		Vibrations .....	17



PFT - THE FLOW OF PRODUCTIVITY



Knauf PFT GmbH & Co. KG  
P.O. Box no. 60 97343 Iphofen  
Einersheimer Straße 53 97346 Iphofen  
Germany

Phone +49 9323 31-760  
Fax +49 9323 31-770  
Technical hotline +49 9323 31-1818  
[info@pft-iphofen.de](mailto:info@pft-iphofen.de)  
[www.pft.eu](http://www.pft.eu)