

PFT BOARDMASTER

ToolGuide



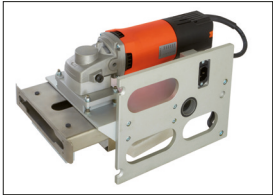


Part no.	Description	Working length one-sided	Working length two-sided
00631891	BOARDMASTER 2500	2,500 mm	2,100 mm
00631894	BOARDMASTER 2500 mobil	2,500 mm	2,100 mm
00631892	BOARDMASTER 3150	3,150 mm	2,750 mm
00631893	BOARDMASTER 4000	4,000 mm	3,600 mm

All tools can be used on any machine, without regard to the working length!

Sawing device

Longitudinal straight cuts



00207826



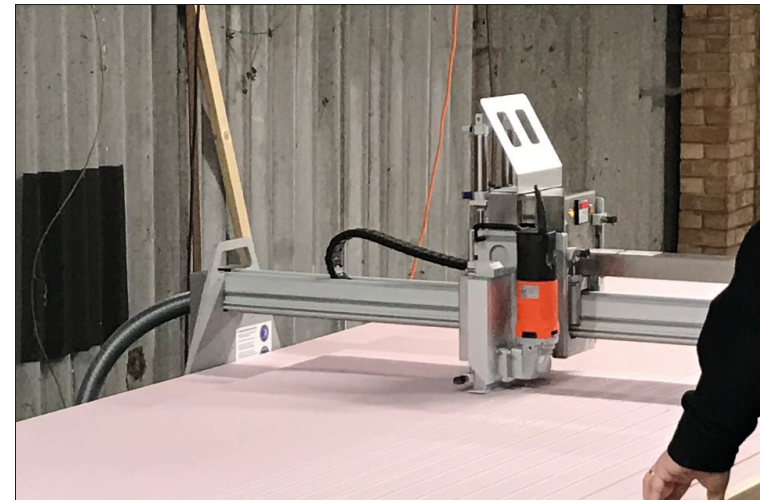
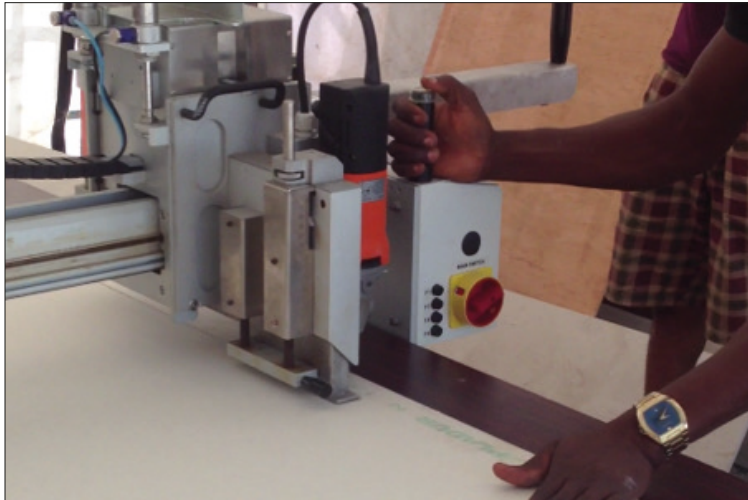
00596664



00207790



00596667



Sawing devices

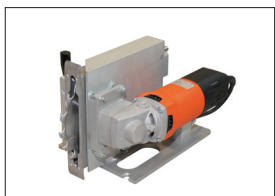
Part no.	Description	Performance data	Processing depth
00207826	Sawing device 1530 W for longitudinal sections	230 V	48 mm
00596665	Sawing device 1800 W for longitudinal sections	230 V	50 mm

Saw blades

Part no.	Description	Tool Ø	Cutting width	Main application	Cutting material
00207790	Saw blade 160 mm	160 mm	1.8 mm	Plaster and plywood boards	Hard metal
00596667	Saw blade 190 mm	190 mm	1.8 mm	Plaster and plywood boards	Hard metal

Sawing device

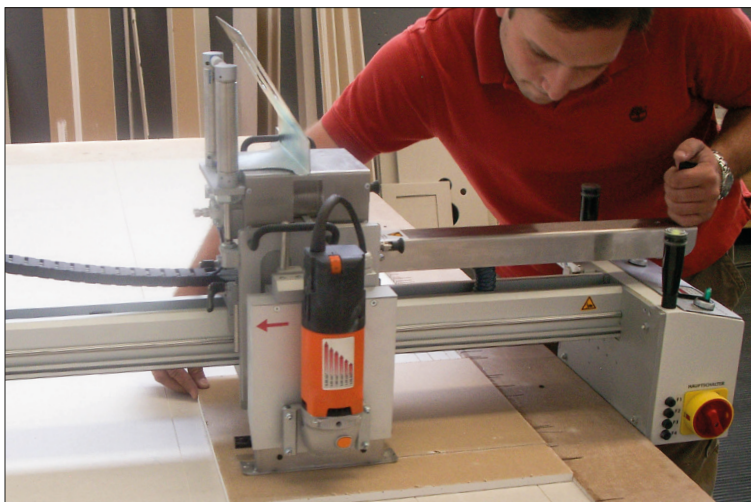
Perpendicular straight cuts



00207828



00596665



00207790



00596667

Sawing devices

Part no.	Description	Performance data	Processing depth
00207828	Sawing device 1530 W for cross sections	230 V	48 mm
00596665	Sawing device 1800 W for cross sections	230 V	50 mm

Saw blades

Part no.	Description	Tool Ø	Cutting width	Main application	Cutting material
00207790	Saw blade 160 mm	160 mm	1.8 mm	Plaster and plywood boards	Hard metal
00596667	Saw blade 190 mm	190 mm	1.8 mm	Plaster and plywood boards	Hard metal

V-groove milling cutter 90°

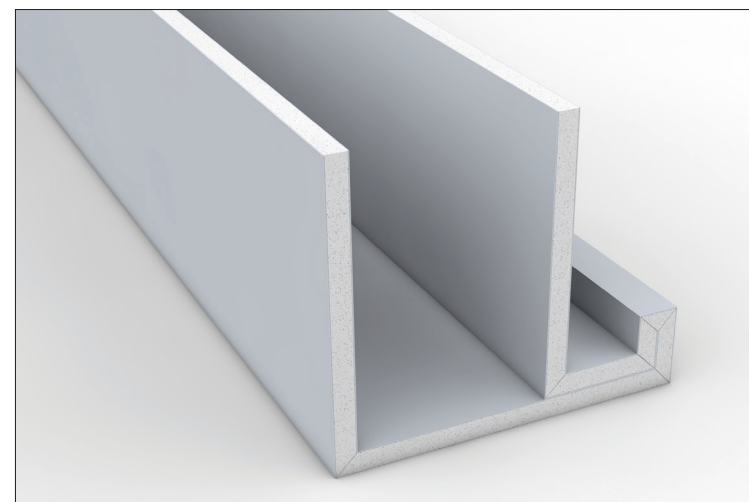
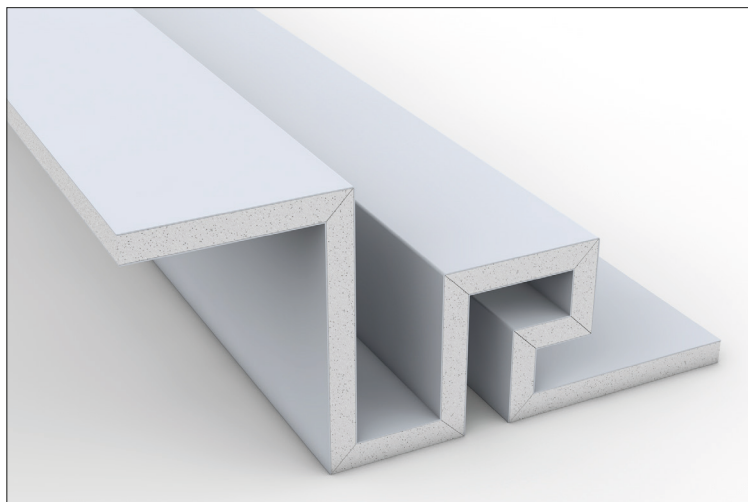
Ceiling elements



00471658



00207820



00207784



00207786

Milling devices

Part no.	Description	Performance data
00207823	Milling device 1050 W	230 V
00471658	Milling device 1600 W	230 V
00207820	Milling device 1800 W	230 V

Milling cutter & accessories

Part no.	Description	For board angle	Plate thickness max.	Cutting material
00207784	Router milling cutter 90°	90°	15 mm	Hard metal
00207786	Router milling cutter 90°	90°	25 mm	Hard metal
on request	Slide plate with small bore (45 mm) milling devices 1600 W and 1800 W			

V-groove milling cutter 90°

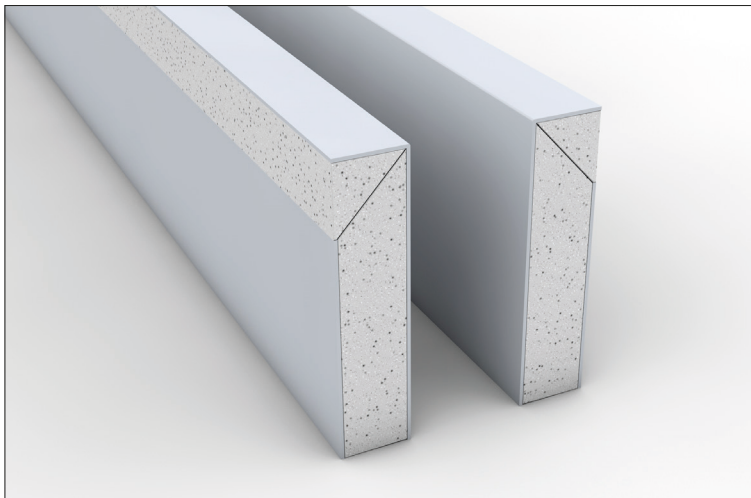
Cardboard facing edges



00207823



00207784



Milling device

Part no.	Description	Performance data
00207823	Milling device 1050 W	230 V

Milling cutter

Part no.	Description	For board angle	Plate thickness max.	Cutting material
00207784	Router milling cutter 90°	90°	15 mm	Hard metal

V-groove milling cutter 90°

Boxes



00207823



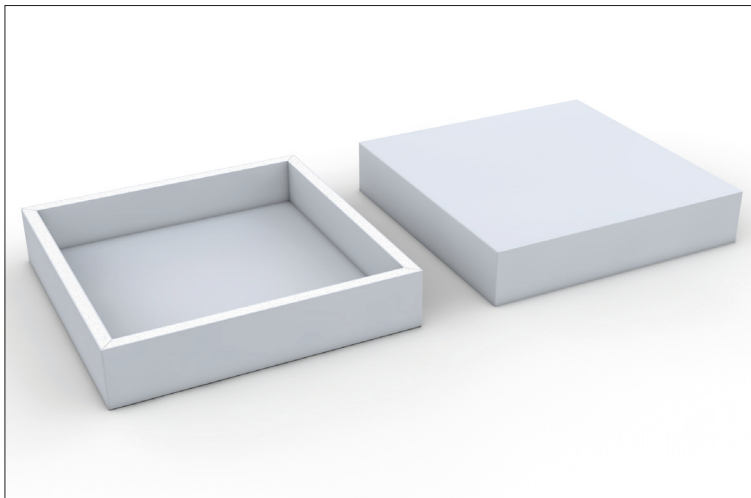
00471658



00207820



00207784



Milling devices

Part no.	Description	Performance data
00207823	Milling device 1050 W	230 V
00471658	Milling device 1600 W	230 V
00207820	Milling device 1800 W	230 V

Milling cutter

Part no.	Description	For board angle	Plate thickness max.	Cutting material
00207784	Router milling cutter 90°	90°	15 mm	Hard metal
00207786	Router milling cutter 90°	90°	25 mm	Hard metal

V-groove milling cutter 90°

Shelf boards



00207823



00207784



Milling device

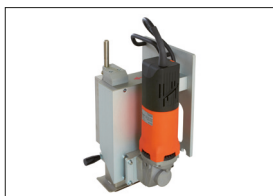
Part no.	Description	Performance data
00207823	Milling device 1050 W	230 V

Milling cutter

Part no.	Description	For board angle	Plate thickness max.	Cutting material
00207784	Router milling cutter 90°	90°	15 mm	Hard metal

Package for V-groove milling cutter 90°

Larger orders



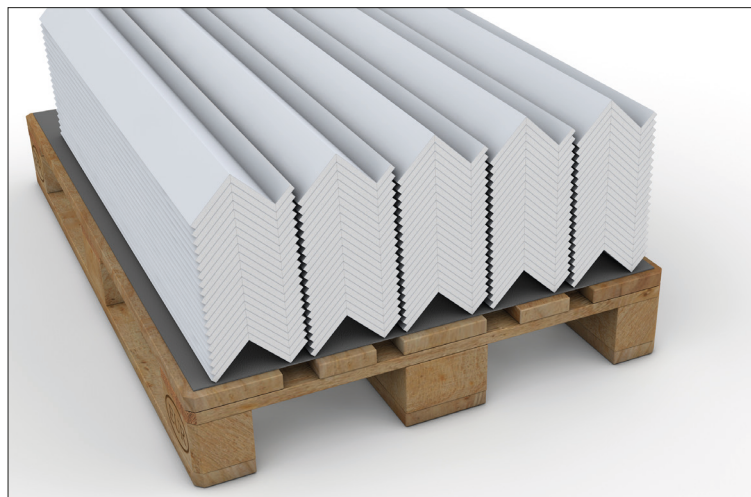
00207830



00524117



00207839



ITS ADVANTAGES – Package for V-groove milling cutter 90° (part no. 00524117)

- ✓ Longer service life
- ✓ Hardly any contaminations in V-grooves while processing
- ✓ Faster feed is possible
- ✓ Efficient working

Note:

Only with in conjunction with 6-fold sawing unit (part no. 00207830, device is not included in the scope of delivery)

Sawing device

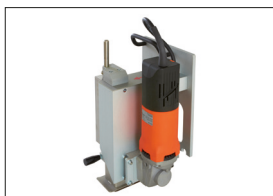
Part no.	Description	Performance data	Processing depth
00207830	Sawing unit 6-fold for longitudinal sections	230 V	22 mm

Saw & accessories

Part no.	Description	Tool Ø	Plate thickness max.	Cutting material
00524117	Package for 90° V-groove suitable for 6-fold sawing unit			
contains	Router milling cutter 90° (part no. 00471656)	125 mm	13 mm	Hard metal
contains	Pertinax plate for 6-fold sawing unit (part no. 00524110)			
00207839	PFTfix primer device			

Package for V-groove milling cutter 90°

Larger orders – examples of use



00207830



00524117



00207839



Sawing device

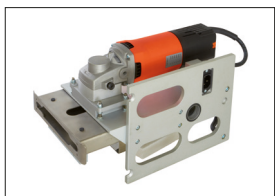
Part no.	Description	Performance data	Processing depth
00207830	Sawing unit 6-fold for longitudinal sections	230 V	22 mm

Saw & accessories

Part no.	Description	Tool Ø	Plate thickness max.	Cutting material
00524117	Package for 90° V-groove suitable for 6-fold sawing unit			
contains	Router milling cutter 90° (part no. 00471656)	125 mm	13 mm	Hard metal
contains	Pertinax plate for 6-fold sawing unit (part no. 00524110)			
00207839	PFTfix primer device			

V groove cutting 90°

Aluminium composite



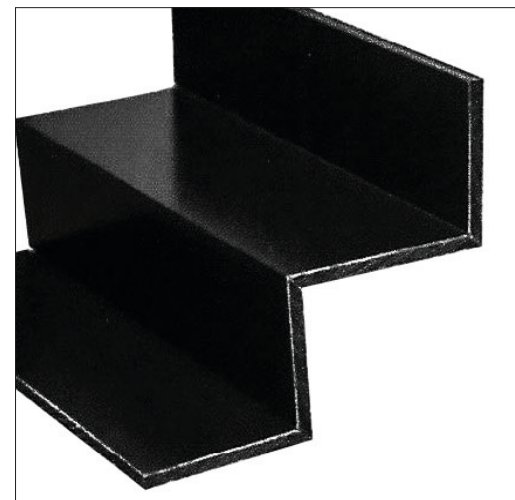
00207826



00207828



00207890



Sawing devices

Part no.	Description	Performance data	Processing depth
00207826	Sawing device 1530 W for longitudinal sections	230 V	48 mm
00207828	Sawing device 1530 W for cross sections	230 V	48 mm

Saw blade

Part no.	Description	For board angle	Plate thickness max.	Cutting material
00207890	Groove saw blade for aluminium composite materials	90°	10 mm	Hard metal

Cuts until 46°

Hard boards



00684323



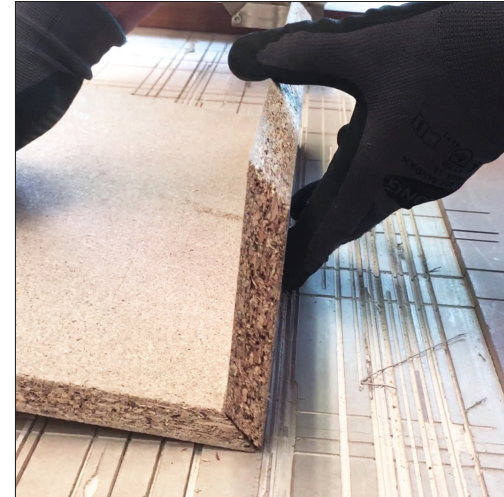
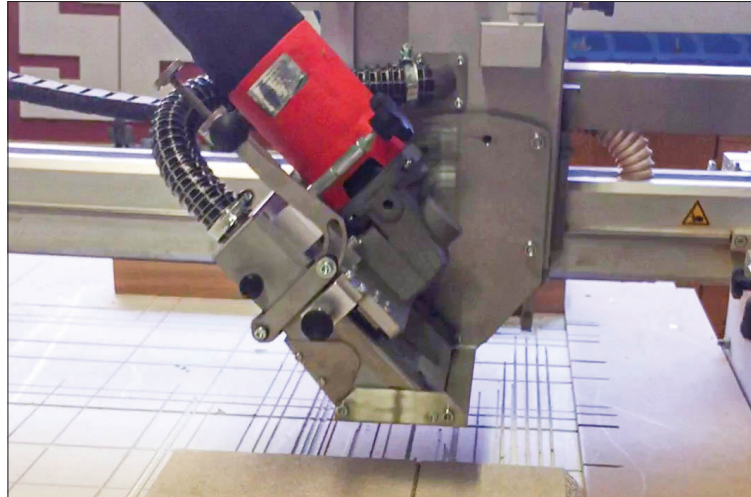
00207790



00207889



00207871



Sawing device

Part no.	Description	Cutting angle
00684323	Swivel saw	up to 46°

Saw blades

Part no.	Description	Tool Ø	Cutting width	Main application	Cutting material
00207790	Saw blade 160 mm	160 mm	1.8 mm	Plaster and plywood boards	Hard metal
00207889	Saw blade 150 mm	150 mm	2.5 mm	Cement boards	Diamond coated
00207871	Saw blade 160 mm	160 mm	1.8 mm	Hard gypsum boards	Diamond

V-groove milling cutter 30° | 45° | 60°

Panel L- or U-shaped with chamfer



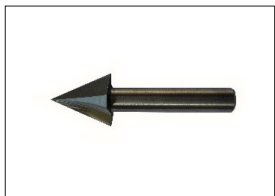
00207823



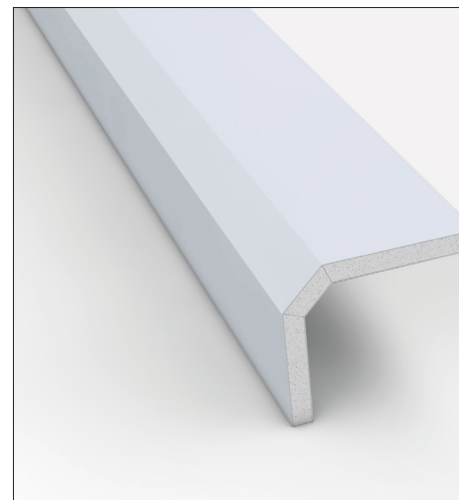
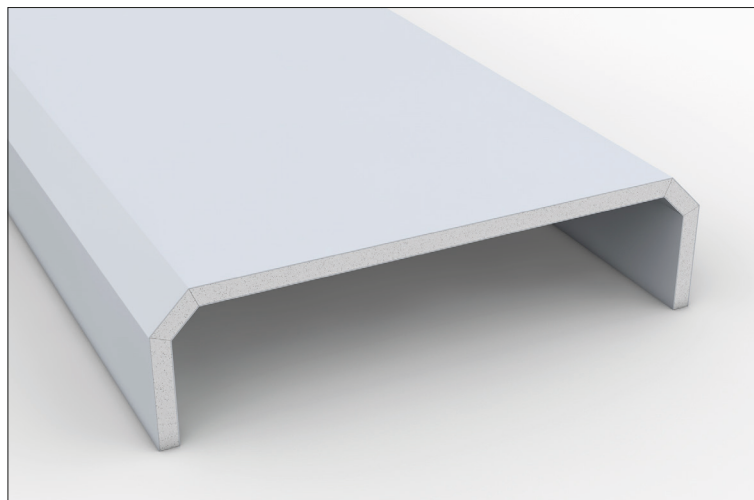
00207914



00207799



00207911



Milling device

Part no.	Description	Performance data
00207823	Milling device 1050 W	230 V

Milling cutter

Part no.	Description	For board angle	Plate thickness max.	Cutting material
00207914	Router milling cutter 30°	150°	15 mm	Hard metal
00207799	Router milling cutter 45°	135°	15 mm	Hard metal
00207911	Router milling cutter 60°	120°	15 mm	Hard metal

V-groove milling cutter 120° | 135°

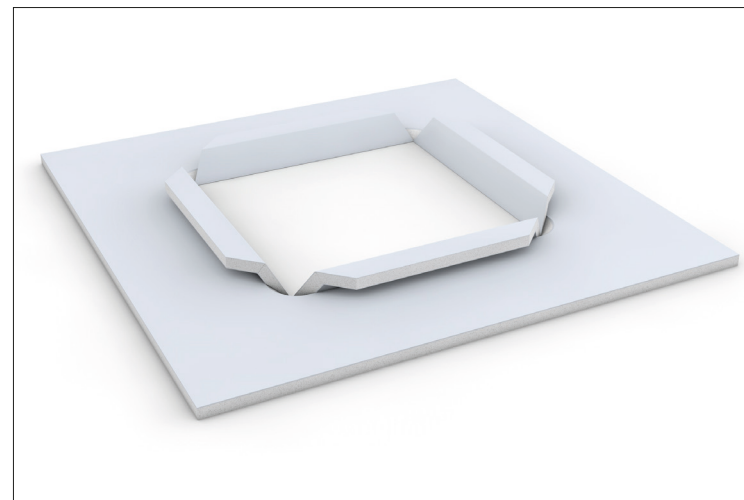
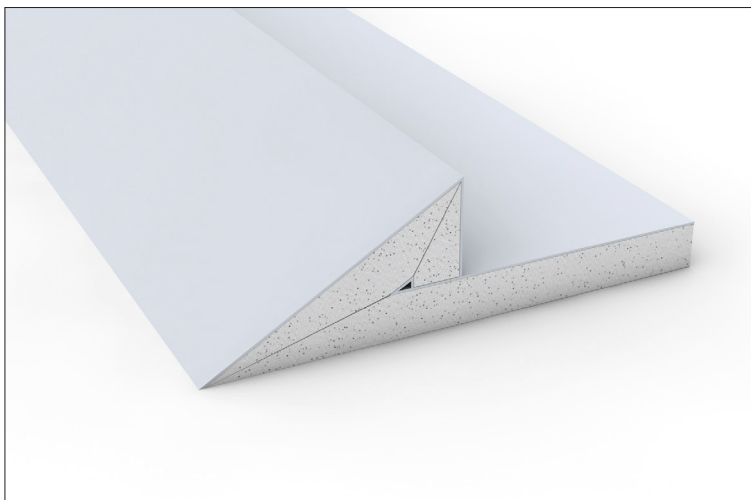
Acute angle



00471658



00207820



00207921



00207810

Milling devices

Part no.	Description	Performance data
00471658	Milling device 1600 W	230 V
00207820	Milling device 1800 W	230 V

Milling cutter

Part no.	Description	For board angle	Plate thickness max.	Cutting material
00207914	Router milling cutter 120°	60°	15 mm	Hard metal
00207799	Router milling cutter 135°	45°	15 mm	Hard metal

Face-milling cutter

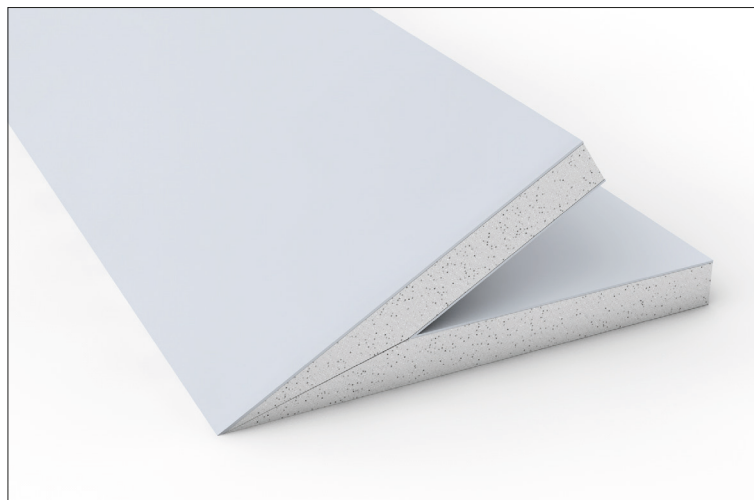
Acute angel over 135°



00471652



00471653



Milling device

Part no.	Description	For board angle	Plate thickness max.	Performance data
00471652	Milling device 1050 W; Can be swivelled to establish a sharpening angle up to 145°	from 35°	15 mm	230 V

Milling cutter

Part no.	Description	Tool Ø	Cut length	Cutting material
00471653	Surface milling cutter for swivelling unit	45 mm	45 mm 19 mm	Hard metal – soldered

PFTstrong round-edge milling cutter

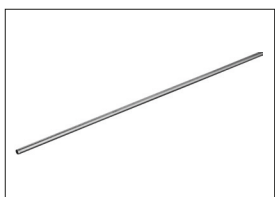
Round edge with round bar inserts



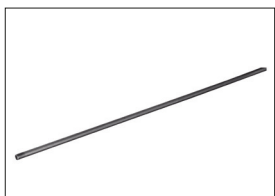
00207823



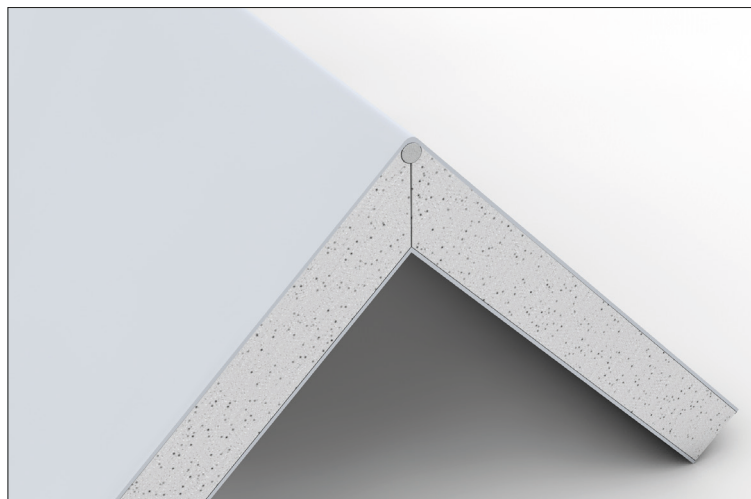
00207994



00208076



00208077



ITS ADVANTAGES

- ✓ Efficient, high-quality edge production
- ✓ Edges with high mechanical stress bearing capacity
- ✓ Without time-consuming plastering of corner protection rails

Milling device

Part no.	Description	Performance data
00207823	Milling device 1050 W	230 V

Milling cutter & accessories

Part no.	Description	Diameter of round bars for insertion Ø	For board angle	Plate thickness max.
00207994	PFTstrong round-edge milling cutter	4 mm	90°	15 mm

Part no.	Description	Material	Diameter	Length
00208071	PFTstrong plexiglass bar	Plexiglass	4 mm	2,000 mm
00208076	PFTstrong steel bar	Steel, galvanized	4 mm	2,000 mm
00208077	PFTstrong aluminium bar	Aluminium	4 mm	3,000 mm

Tile joint milling cutter

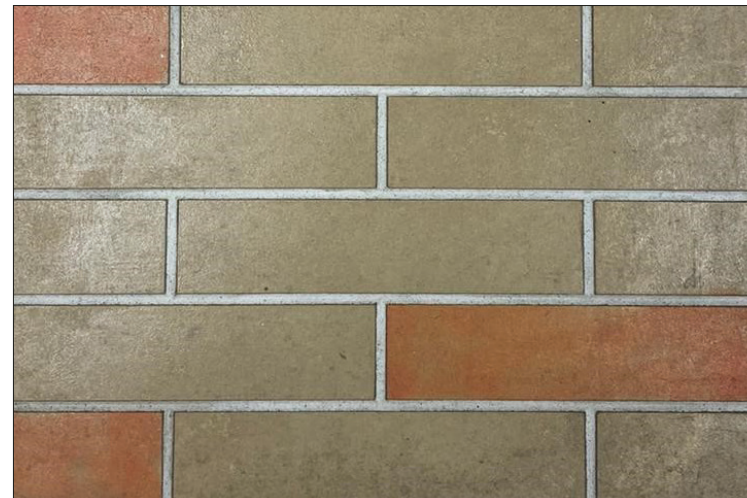
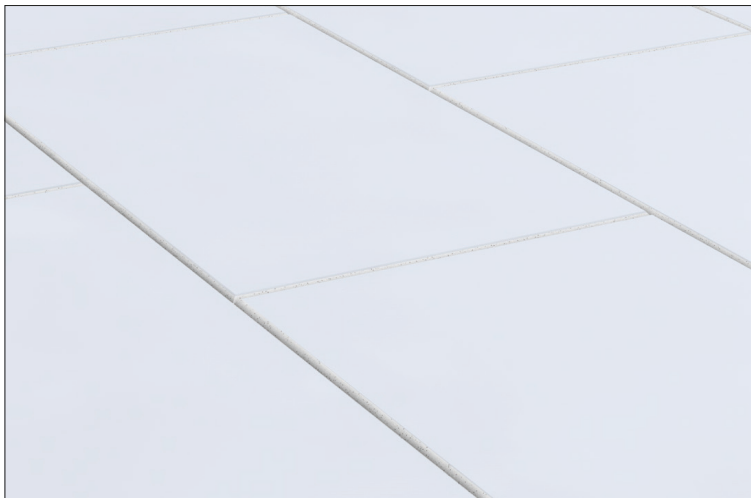
For reproducing tile joints



00207823



00207809



Milling device

Part no.	Description	Performance data
00207823	Milling device 1050 W	230 V

Milling cutter

Part no.	Description	Radius	Cutting material
00207809	Tile joint milling cutter	3 mm	Hard metal

Pattern milling cutter

For preparing of pattern profiles or to prepare fillet channels for lines



00207823



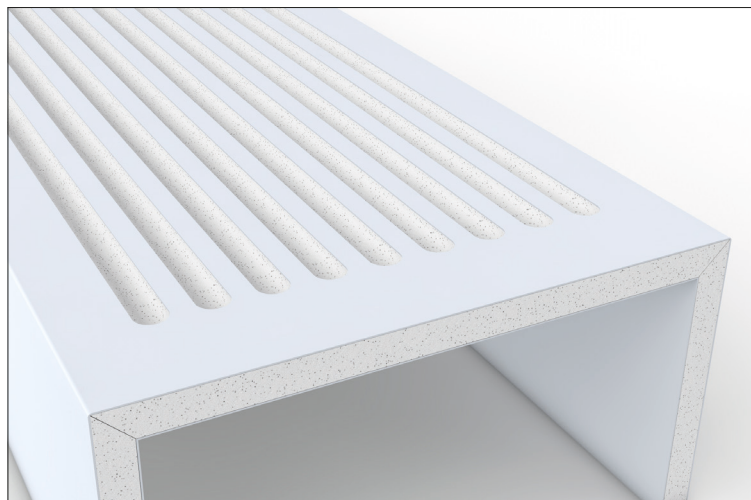
00207802



00207800



00207807



Milling device

Part no.	Description	Performance data
00207823	Milling device 1050 W	230 V

Milling cutter

Part no.	Description	Tool Ø	Cutting material
00207802	Pattern milling cutter	16 mm	Hard metal
00207800	Pattern milling cutter	20 mm	Hard metal
00207807	Pattern milling cutter	24 mm	Hard metal

Structure milling cutter

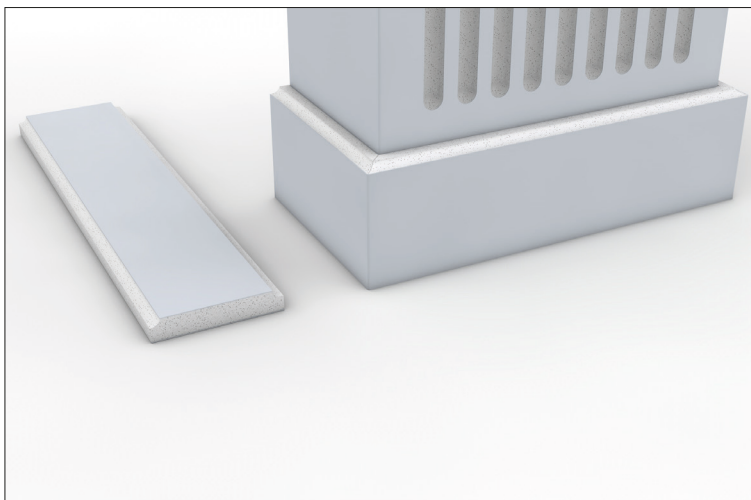
For preparing pattern profiles



00207823



00207812



Milling device

Part no.	Description	Performance data
00207823	Milling device 1050 W	230 V

Milling cutter

Part no.	Description	Tool Ø	Cutting material
00207812	Profile separation milling cutter - Quarter rod milling cutter	20 mm	Hard metal



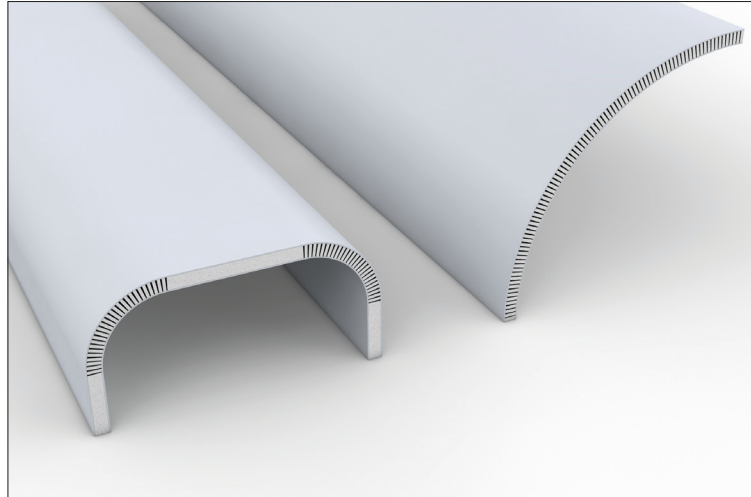
00264169



00207869



00208087



Sawing device

Part no.	Description	Processing depth max.	Performance data
00264169	Sawing unit 6-fold for longitudinal sections	22 mm	230 V
contains	Saw blade Ø 120 mm (PU 6, part no. 00207869)		

Accessories

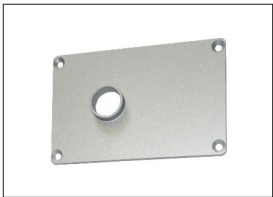
Part no.	Description	Roll width	Total area
00208087	Aqua-accord web for stabilising roundings; Supporting web for gluing on grooved plasterboard plates for roundings and arches	1,000 mm	50 m ²



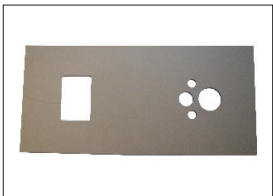
00207823



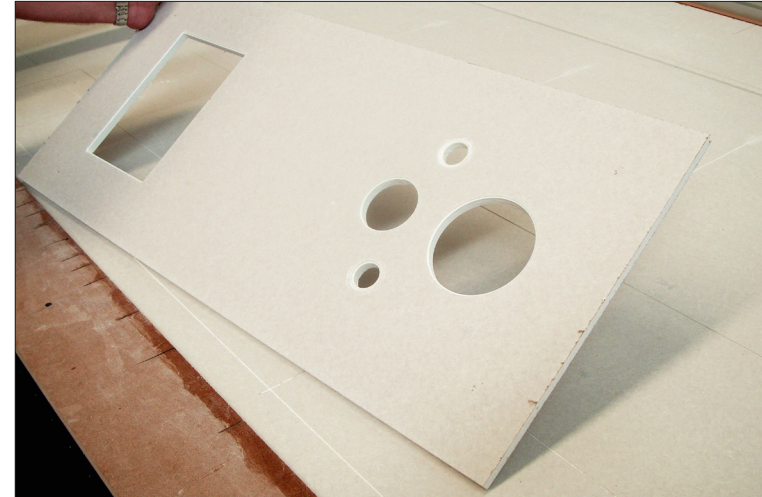
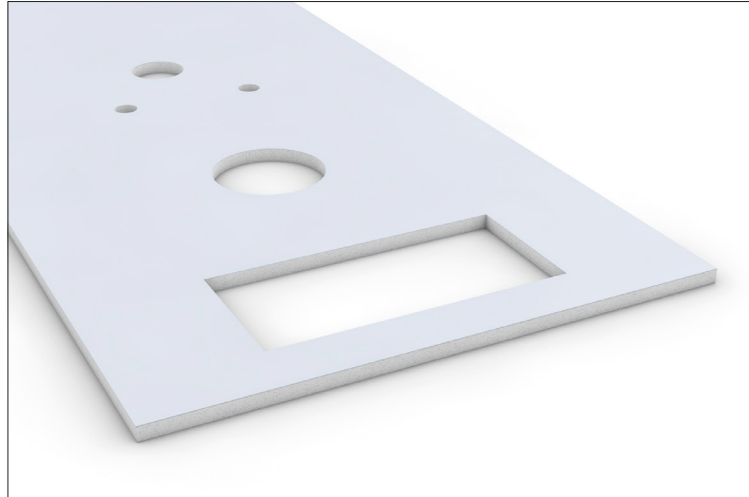
00207795



00207801



00207842



Milling device

Part no.	Description	Performance data
00207823	Milling device 1050 W	230 V

Milling cutter & accessories

Part no.	Description	Tool Ø	Plate thickness max.	Cutting material
00207795	Copier and slitter cutter with an integrated chamfer milling cutter	6 mm	13 mm	Hard metal

Part no.	Description	Main application	Diameter
00207801	Copying and scanning plate	For copying working with templates	25 mm
00207842	Sanitation template	For WC cut-outs	



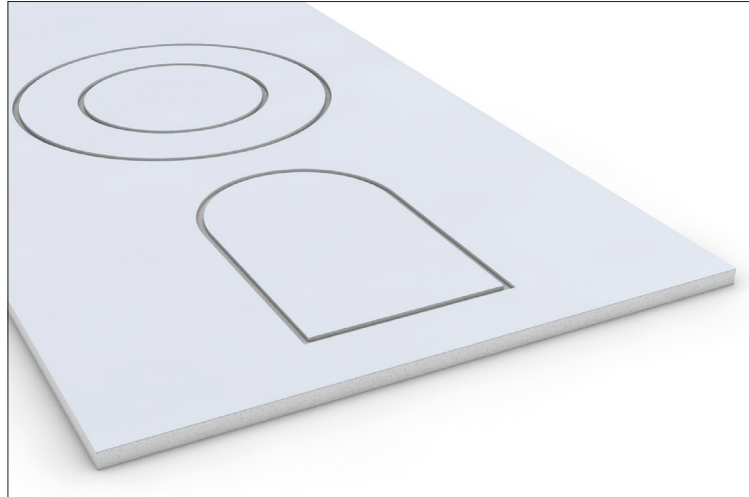
00207823



00207795



00226468



Milling device

Part no.	Description	Performance data
00207823	Milling device 1050 W	230 V

Milling cutter & accessories

Part no.	Description	Tool Ø	Plate thickness max.	Cutting material
00207795	Copier and slitter cutter with an integrated chamfer milling cutter	6 mm	13 mm	Hard metal

Part no.	Description	Main application
00226468	Circular template for cut-outs, can be infinitely adjusted from 150 mm to 1,200 mm	For cut-outs

PFTrev – Slotting cutter

For cutting inspection openings with a joint width of 1 mm



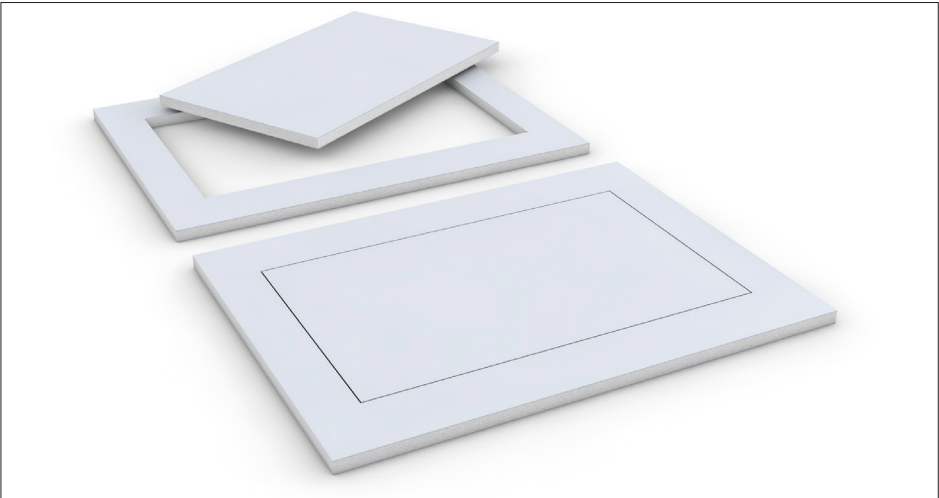
00207823



00207808



00207990



Milling device

Part no.	Description	Performance data
00207823	Milling device 1050 W	230 V

Milling cutter & accessories

Part no.	Description	Tool Ø	Plate thickness max.	Cutting material
00207808	PFTrev – slotting cutter	1 mm	13 mm	Hard metal
00207990	PFTrev – slotting cutter	1 mm	15 mm - 5/8 inch	Hard metal

Milling of tapered edges

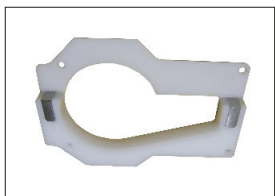
For jointing



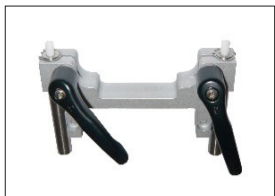
00471658



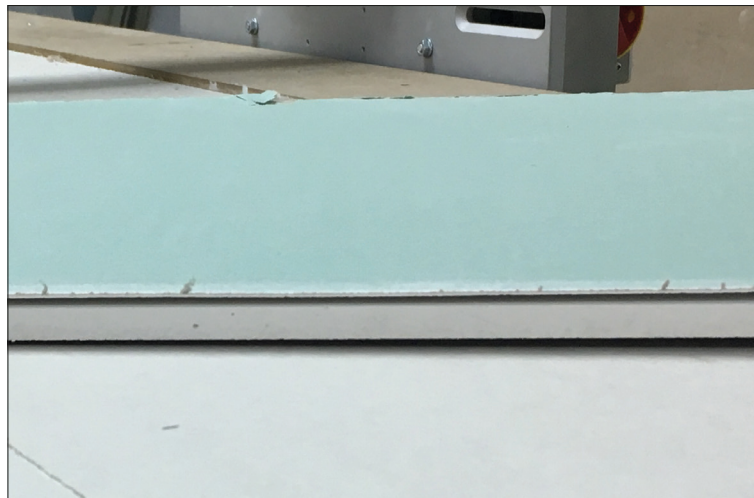
00673494



00207852



00208338

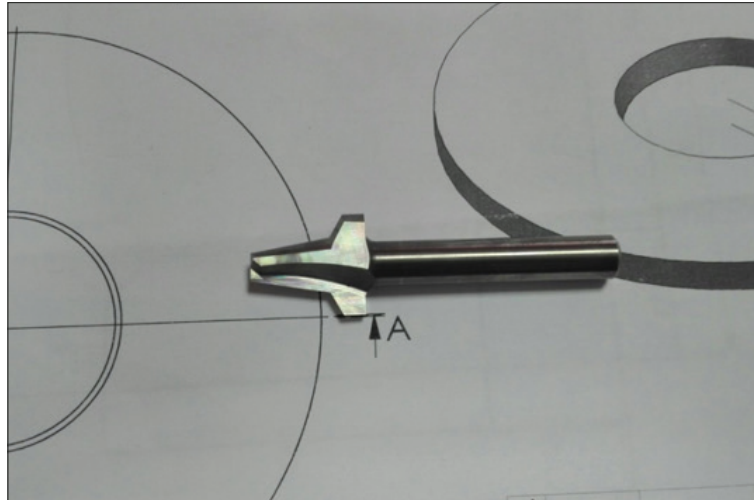


Milling device

Part no.	Description	Performance data
00471658	Milling device 1600 W	230 V

Milling cutter

Part no.	Description
00673494	Grooving discs router cutter
00207852	Slide plate for soffit milling cutter, outer
00208338	Weight relief set for left + right units



PFT offers custom made tools for different angles or functions.
We will be happy to advise you on this.

Valuable services

PFT – ALWAYS AT YOUR SITE



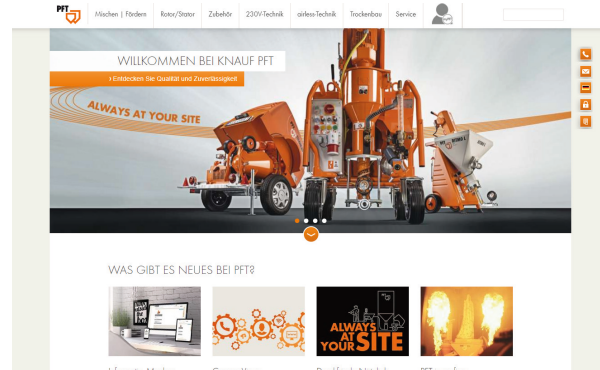
PFT TECHNICAL HOTLINE

Do you have questions about our machine technology or the applications of our machines?

These can be quickly and easily resolved during a brief telephone conversation. You are welcome to use our **free Technical Hotline** for this purpose. With our new telephone system, your technical inquiries will be handled with even greater efficiency.

You can reach our technicians on
+49 9323 31-1818

Mon - Thurs 08:00 – 16:30 hrs
and Fri 08:00 – 15:00 hrs



PFT DIGITAL

Web, app or social media – Technical documents, videos and much more available around the clock, always up-to-date and naturally free of charge in the digital world of PFT. These clicks are worth it!

- > www.pft.net
- > www.youtube.com/knaufpft
- > www.facebook.com/knaufpft
- > www.instagram.com/knauf.pft
- > www.linkedin.com/company/knaufpft
- > **App: PFT - Plastering Technology**



PFT CUSTOMER SERVICE

PFT guarantees you:

- High product quality
- Innovative technology
- Verified safety
- Short delivery times
- An individual customer service, which leaves nothing to be desired.

You can find your nearest authorised PFT dealer online at

> www.pft.net/haendersuche

All rights and technical changes are reserved. Our guarantee only relates to the perfect quality of our machines. Consumption, quantity, execution details and performance data are empirical values, which cannot be transferred readily in case of different circumstances. Furthermore, the guidelines of the material manufacturer are always applicable. The illustrations shown may also contain special equipment that is not included in the standard scope of supply. Protective covers may be removed for improved illustration, although operation is only possible with protective covers in place. Changes, reprints and photomechanical reproductions, even in parts, require the approval of Knauf PFT GmbH & Co. KG.

ToolGuide BOARDMASTER EN/04.21/PFT