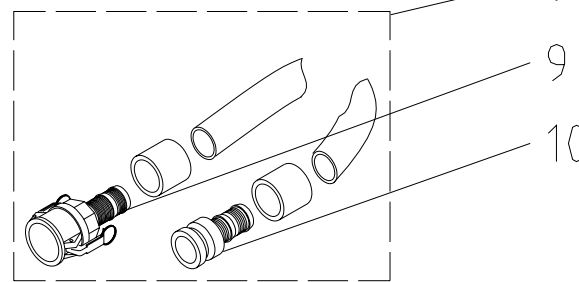
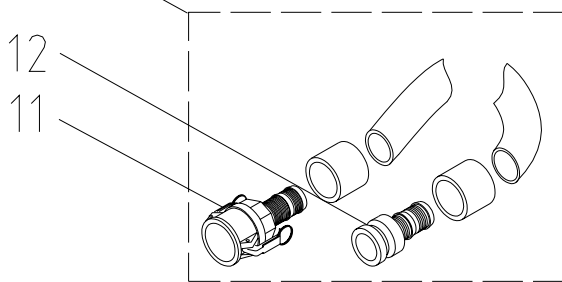
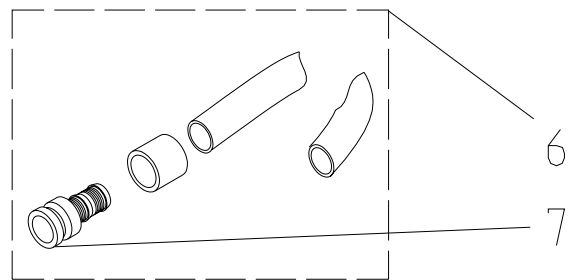
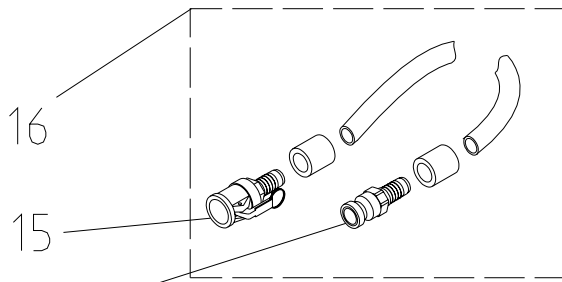
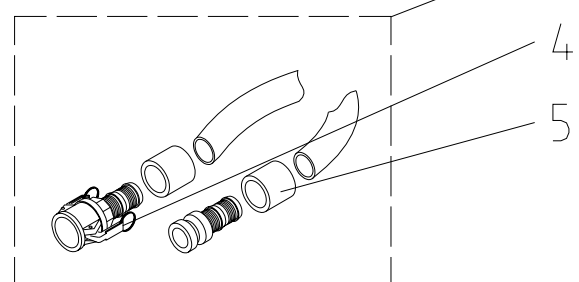
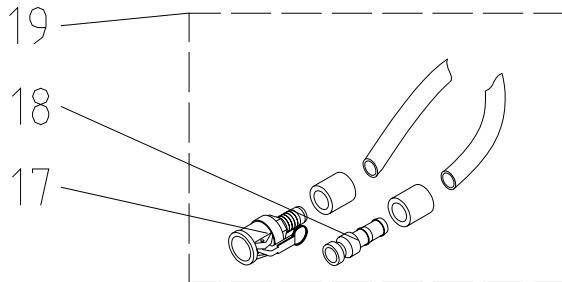
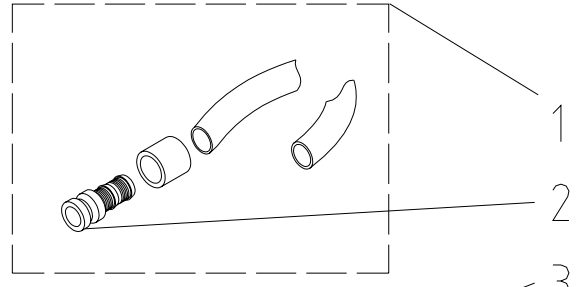
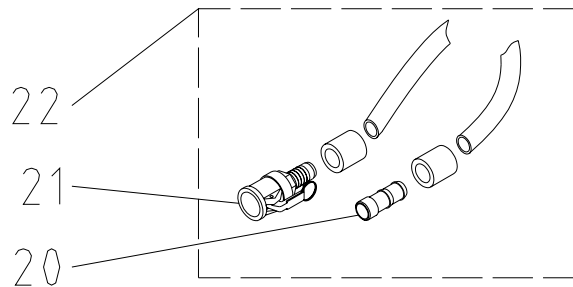


Contents

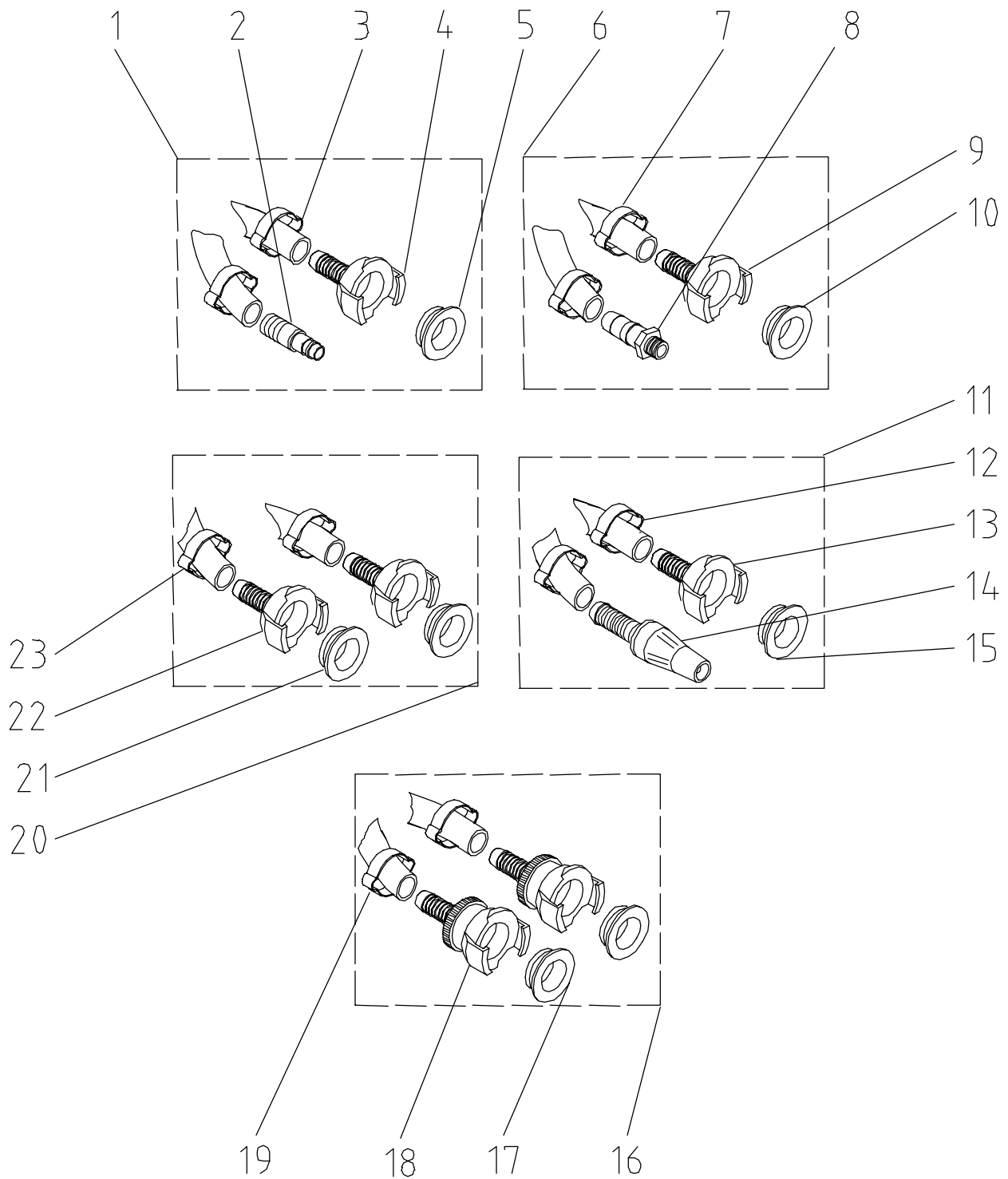
Contents	1
Spare parts drawing for mortar hoses	4
Spare parts list for mortar hoses	5
Spare parts drawing for water / air hoses	6
Spare parts list for water / air hoses	7
Spare parts drawing for ventilation tube for silo ventilation cpl.	8
Spare parts list for ventilation tube for silo-ventilation cpl.	9
Spare parts drawing for hose clips	10
Spare parts list for hose clips	11
Spare parts drawing for geka / high-pressure coupling	12
Spare parts list for geka / high-pressure coupling	13
Spare parts drawing for couplings	14
Spare parts list for couplings	15
Spare parts drawing for B / C Couplings	16
Spare parts list for B / C Couplings	17
Spare parts drawing for couplings female	18
Spare parts list for couplings female	19
Spare parts drawing for couplings male	20
Spare parts list for couplings male	21
Spare parts drawing for couplings	22
Spare parts list for couplings	23
Spare parts drawing for conveying hoses	24
Spare parts list for conveying hoses	25
Spare parts drawing for spraying gun 25 mm	26
Spare parts list for spraying gun 25 mm	27
Spare parts drawing for spraying gun 25 mm	28
Spare parts list for spraying gun 25 mm	29
Spare parts drawing for spraying gun 35 mm	30
Spare parts list for spraying gun 35 mm	31
Spare parts drawing for spraying gun 25 mm with squeeze valve	32
Spare parts list for spraying gun 25 mm with squeeze valve	33
Spare parts drawing for spraying gun 35 mm with squeeze valve	34
Spare parts list for spraying gun 35 mm with squeeze valve	35
Spare parts drawing for spraying gun 25 mm with tap	36
Spare parts list for spraying gun 25 mm with tap	37
Spare parts drawing for spraying gun for decorative plasters	38

Spare parts list for spraying gun for decorative plasters _____	39
Spare parts drawing for spraying gun with spraying head for concrete primer (Beto contact) ____	40
Spare parts list for spraying gun with spraying head for concrete primer (Beto contact) _____	41
Spare parts drawing for spraying gun 25 mm LW24 nozzle 12 mm straight _____	42
Spare parts list for spraying gun 25 mm LW24 nozzle 12 mm straight _____	43
Spare parts drawing for spraying gun concrete primer w. spray head M20 _____	44
Spare parts list for spraying gun concrete primer w. spray head M20 _____	45
Spare parts drawing for Zargomat spraying gun _____	46
Spare parts list for Zargomat spraying gun _____	47
Spare parts drawing for spraying gun for bounding mortar with pressure switch _____	48
Spare parts list for spraying gun for bounding mortar with pressure switch _____	49
Spare parts drawing for spraying gun for concrete 35 mm _____	50
Spare parts list for spraying gun for concrete 35 mm _____	51
Spare parts drawing for JETSET case _____	52
Spare parts list for JETSET case _____	53
Spare parts drawing for mortar pressure gauge _____	54
Spare parts list for mortar pressure gauge _____	55
Spare parts drawing for mortar pressure gauge 35 mm _____	56
Spare parts list for mortar pressure gauge 35 mm _____	57
Spare parts drawing for mortar pressure gauge 50 mm _____	58
Spare parts list for mortar pressure gauge 50 mm _____	59
Spare parts drawing for spraying gun SWING in case _____	60
Spare parts list for spraying gun SWING in case _____	61

Spare parts drawing for mortar hoses

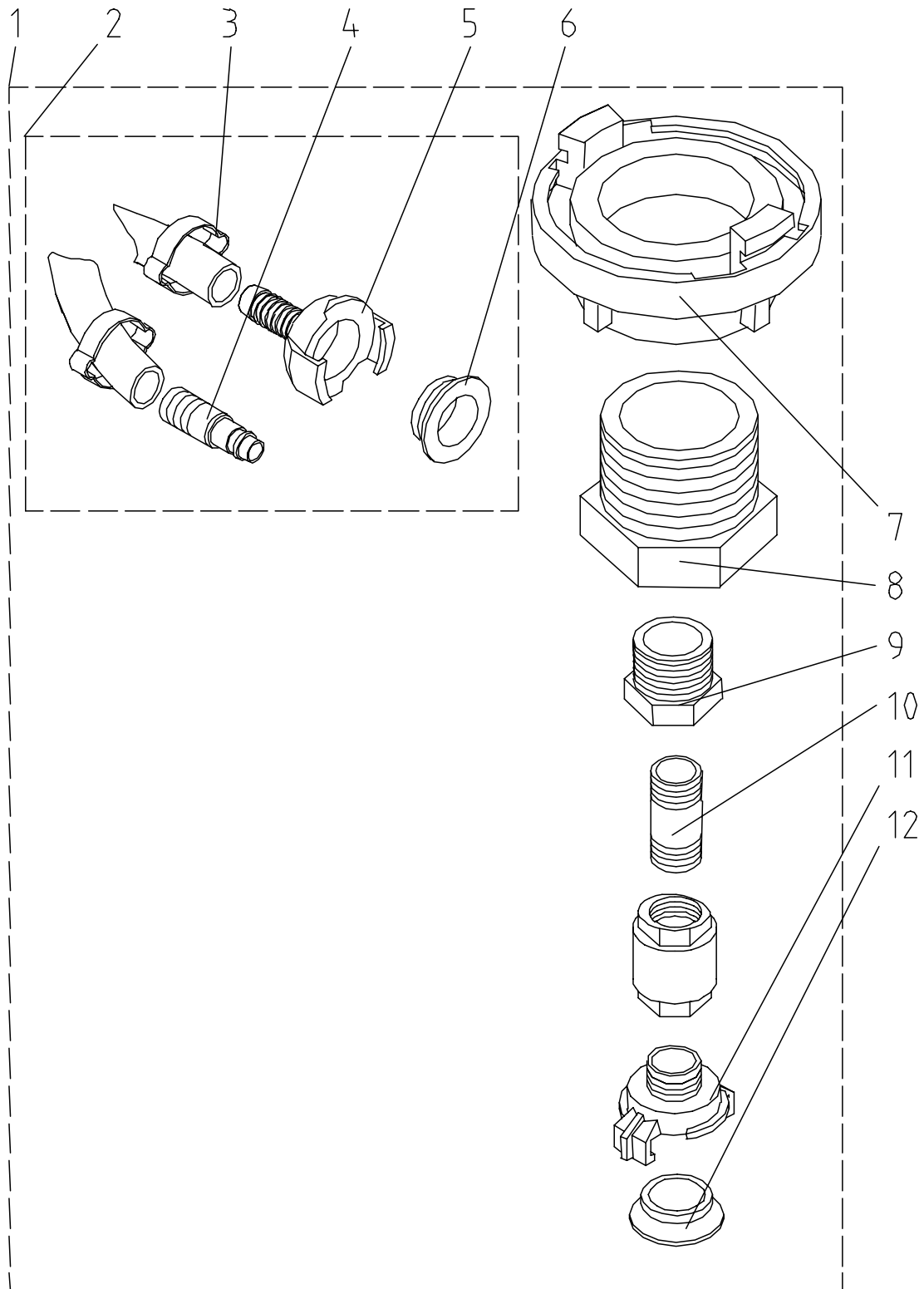
Spare parts list for mortar hoses

Pos.	Qty.	Item no.	Description
1	1	00002604	NO LONGER AVAILABLE, REPLACEMENT 00 02 11 23
2	1	20200721	Coupling 35 male with socket ID 34
3	1	00002607	NO LONGER AVAILABLE, REPLACEMENT 00 02 11 06
4	1	00002202	Coupling 35 female ID 34 (hydraulic) with 2 long handles with safety ring
5	1	00002239	Sleeve (35) for hydraulic connection
6	1	00002612	-----
7	1	00002588	-----
8	1	00002611	-----
9	1	00002599	-----
10	1	00002588	-----
11	1	00001194	NO LONGER AVAILABLE, NO REPLACEMENT
12	1	00002586	Coupling 50 male ID 49 (hydraulic)
13	1	00002614	Mortar hose 50 mm 5 m cpl. (hydraulic)
14	1	00001930	Coupling 25 male ID 24 (hydraulic)
15	1	00001931	Coupling 25 female ID 24 (hydraulic)
16	1	00002608	NO LONGER AVAILABLE REPLACEMENT 00021101
17	1	00001931	Coupling 25 female ID 24 (hydraulic)
18	1	00001929	Coupling 25 male ID 24 (hydraulic) turnable
19	1	00001932	NO LONGER AVAILABLE REPLACEMENT 00021118
20	1	00008870	NO LONGER AVAILABLE, NO REPLACEMENT
21	1	00001931	Coupling 25 female ID 24 (hydraulic)
22	1	00008871	NO LONGER AVAILABLE, REPLACEMENT 00 02 12 72

Spare parts drawing for water / air hoses

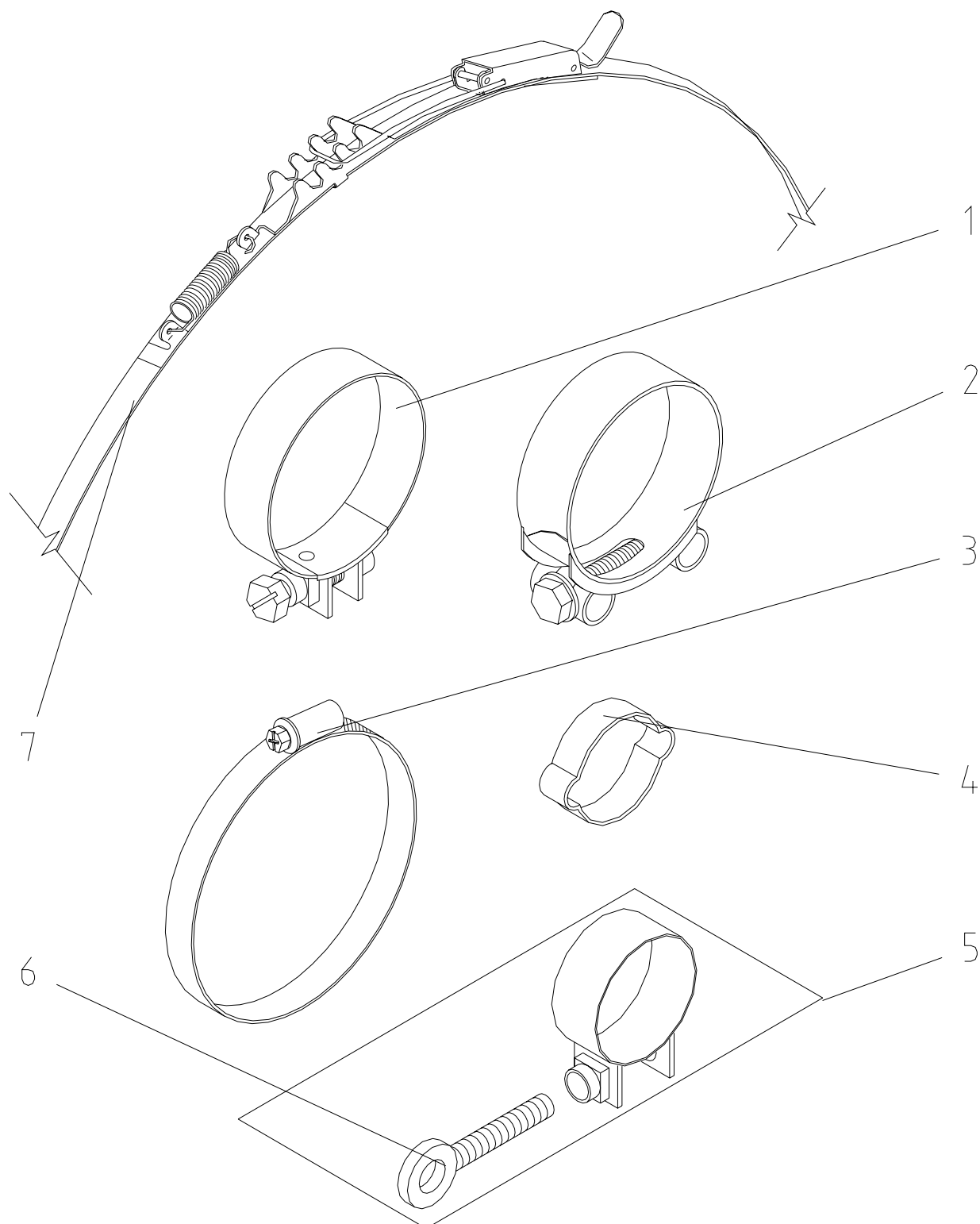
Spare parts list for water / air hoses

Pos.	Qty.	Item no.	Description
1	1	20211350	Water-/air hose 1/2", 2 m with Geka coupling and male EWO coupling
	1	20211600	Water-/air hose 1/2", 11 m with Geka coupling and male EWO coupling
	1	20211601	Water-/air hose 1/2", 15 m with Geka coupling and male EWO coupling
2	1	20202100	EWO coupling male with socket 1/2"
3	2	20202500	Hose clip 20-23 packing unit=10ST
4	1	20201500	Geka coupling 1/2" socket
5	1	20201700	Gasket Geka-coupling
6	1	20211001	NO LONGER AVAILABLE, REPLACEMENT 20 21 10 00
	1	20211002	No longer available, no replacement
8	1	20190411	Hose screw joint 1/4" ext. thread socket 1/2"
9	1	20201500	Geka coupling 1/2" socket
10	1	20201700	Gasket Geka-coupling
11	1	20213001	Water-/air hose 1/2", 3 m with Geka coupling and sprayer nozzle
		20213000	Water-/air hose 1/2", 20 m with Geka coupling and sprayer nozzle
12	2	20202500	Hose clip 20-23 packing unit=10ST
13	1	20201500	Geka coupling 1/2" socket
14	1	20215600	Sprayer nozzle 1/2" with socket
	1	20215610	Sprayer nozzle 3/4" with socket
15	1	20201700	Gasket Geka-coupling
16	1	20211300	Water /air hose 1/2", 15 m with high pressure couplings
17	2	00011478	Gasket with fixing ring for suction coupling
18	2	20201670	High pressure coupling 1/2" socket with seal
19	2	20202500	Hose clip 20-23 packing unit=10ST
20	1	20212200	Water /air hose 1", 40 m with Geka couplings
	1	20211100	Water /air hose 1/2", 5 m with Geka couplings
	1	20211000	Water /air hose 1/2", 11 m with Geka couplings
	1	20211200	Water /air hose 1/2", 13.3 m with Geka couplings
	1	20211003	Water /air hose 1/2", 16 m with Geka couplings
	1	20212010	Water /air hose 1/2", 20 m with Geka couplings
	1	20212000	Water /air hose 1/2", 40 m with Geka couplings
	1	20212100	Water /air hose 3/4" x 40 m with Geka couplings
21	2	20201700	Gasket Geka coupling
22	2	20201610	Geka coupling 1" socket
	2	20201500	Geka coupling 1/2" socket
	2	20201600	Geka coupling 3/4" socket
23	2	20202500	Hose clip 20-23 packing unit=10ST

Spare parts drawing for ventilation tube for silo ventilation cpl.

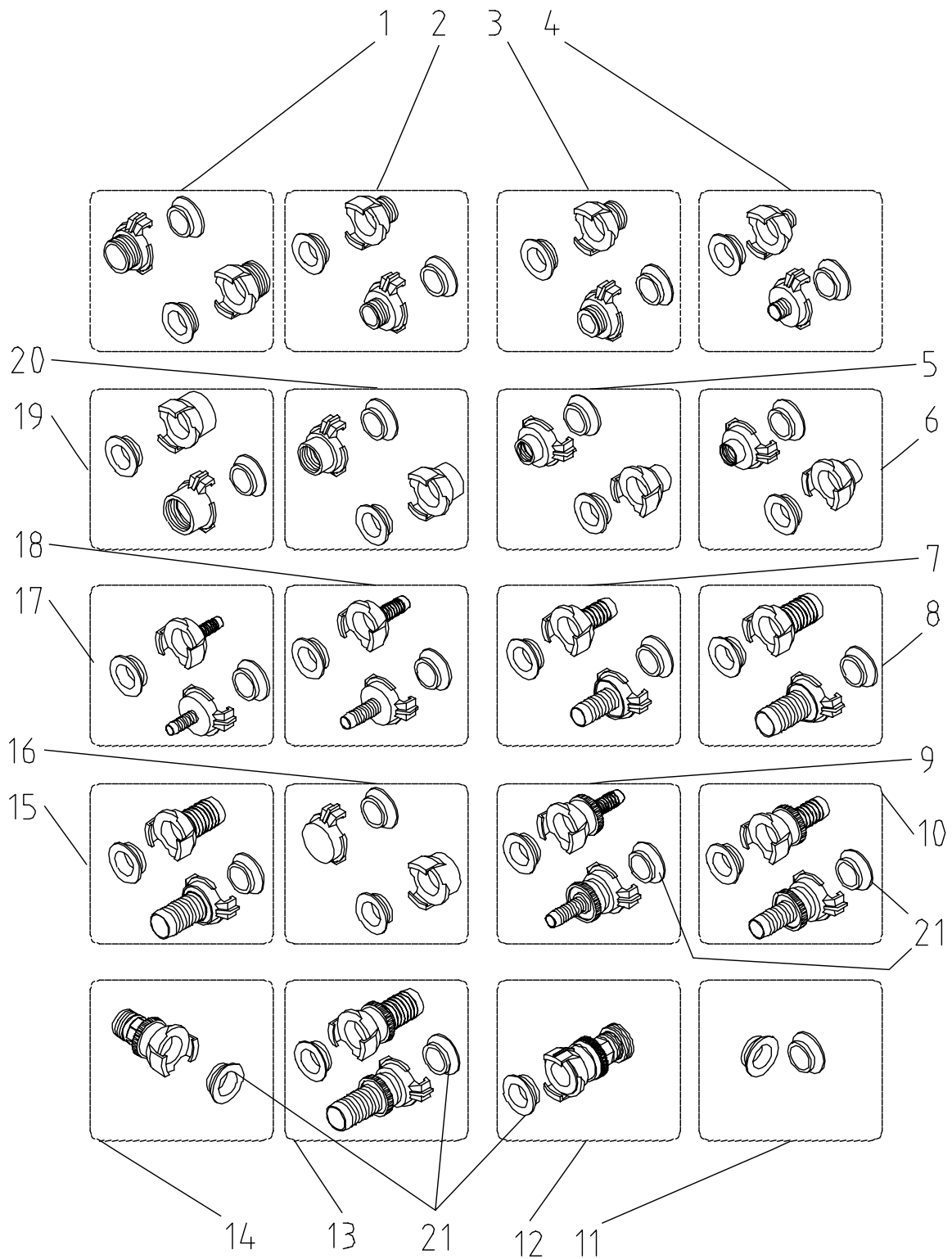
Spare parts list for ventilation tube for silo-ventilation cpl.

Pos.	Qty.	Item no.	Description
1	1	20706802	Ventilation tube for silo-ventilation cpl.
2	1	20211350	Water-/air hose 1/2", 2 m with Geka coupling and male EWO-coupling
3	2	20202500	Hose clip 20-23 packing unit=10ST
4	1	20202100	EWO-coupling male with socket 1/2"
5	1	20201500	Geka coupling 1/2" socket
6	1	20201700	Gasket Geka-coupling
7	1	20656000	Coupling B DIN 2 1/2" int. thread
8	1	20205800	Reducing nipple 2 1/2" ext. thread 1" int. thread no. 241 galv.
9	1	20205400	Reducing nipple 1" ext. thread 1/2" int. thread no. 241 galv.
10	1	20203310	Nipple 1/2" x 25 no. 22 galv.
11	1	20200900	Geka coupling 1/2" ext. thread
12	1	20201700	Gasket Geka-coupling

Spare parts drawing for hose clips

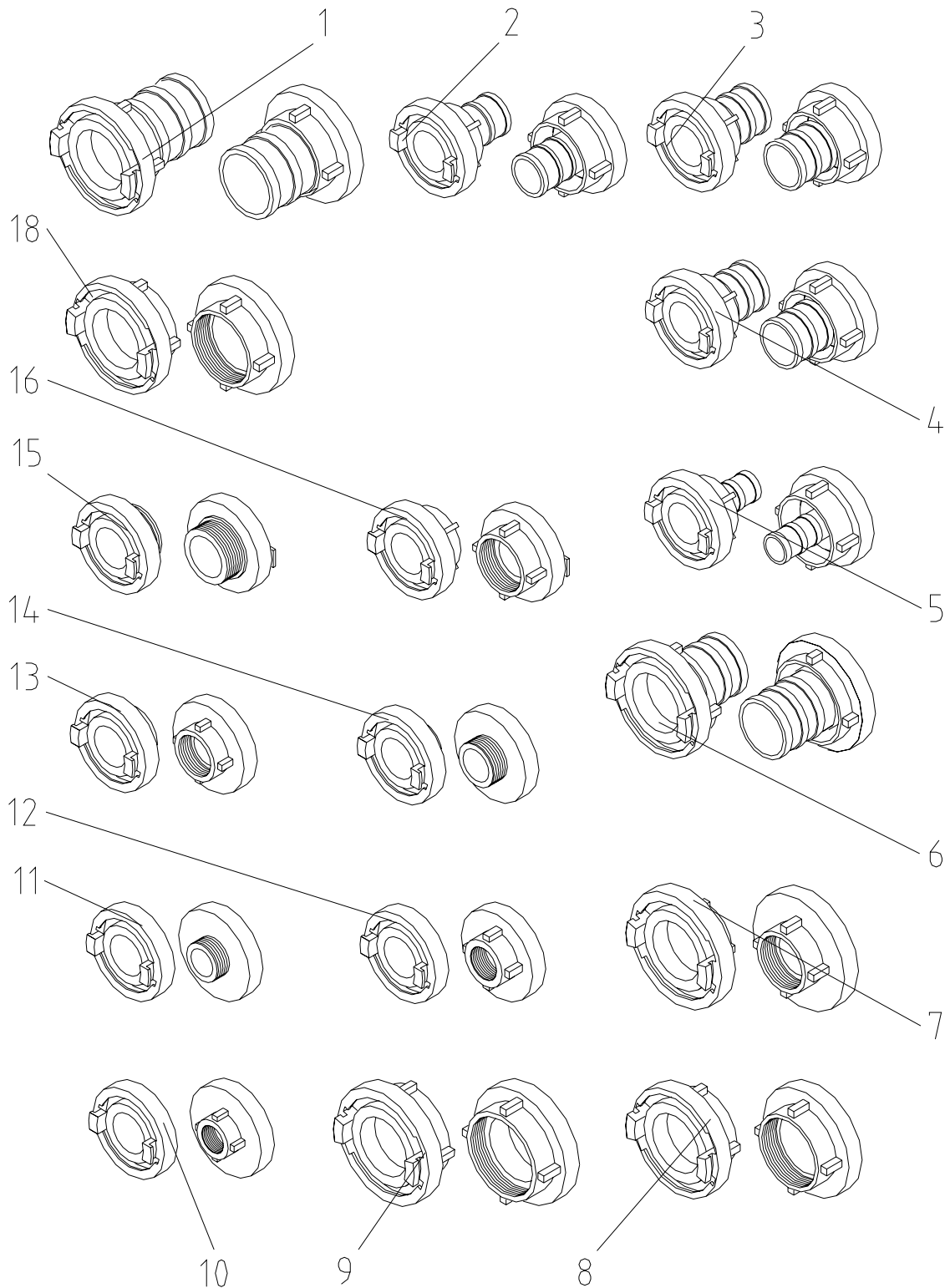
Spare parts list for hose clips

Pos.	Qty.	Item no.	Description
1	1	20202320	Hose clip 50er with screw D=69
	1	20202310	Hose clip 35er with screw D=48
	1	20202300	Hose clip 25er with screw D=37
2	1	20659700	Hose clip SK 66 with screw D=66
	1	20659600	Hose clip SK 49 with screw D=49
	1	20659500	Hose clip SK 44 with screw D=44
3	1	00002460	Hose clip 90-100 with screw
	1	20202930	Hose clip 90-120 with screw
	1	00002460	Hose clip 90-100 with screw
	1	00008642	Hose clip 80-100 with screw
	1	20659000	Hose clip D 40-60 with screw
	1	20659100	Hose clip D 50-70 with screw
	1	20659200	Hose clip D 60-80 with screw
	1	20202200	Hose clip 17/12
4	1	20202910	Hose clip 34-37 packing unit=10ST
	1	20202900	Hose clip 28-31 packing unit=10ST
	1	20202600	Hose clip 17-20 packing unit=10ST
	1	20202610	Hose clip 15-18 packing unit=10ST
5	1	20196329	NO LONGER AVAILABLE, NO REPLACEMENT
6	1		Ring bolt M8 x 40 DIN 580 zinc-pl.
7	1	20604500	Tightening strap D=205 mm

Spare parts drawing for geka / high-pressure coupling

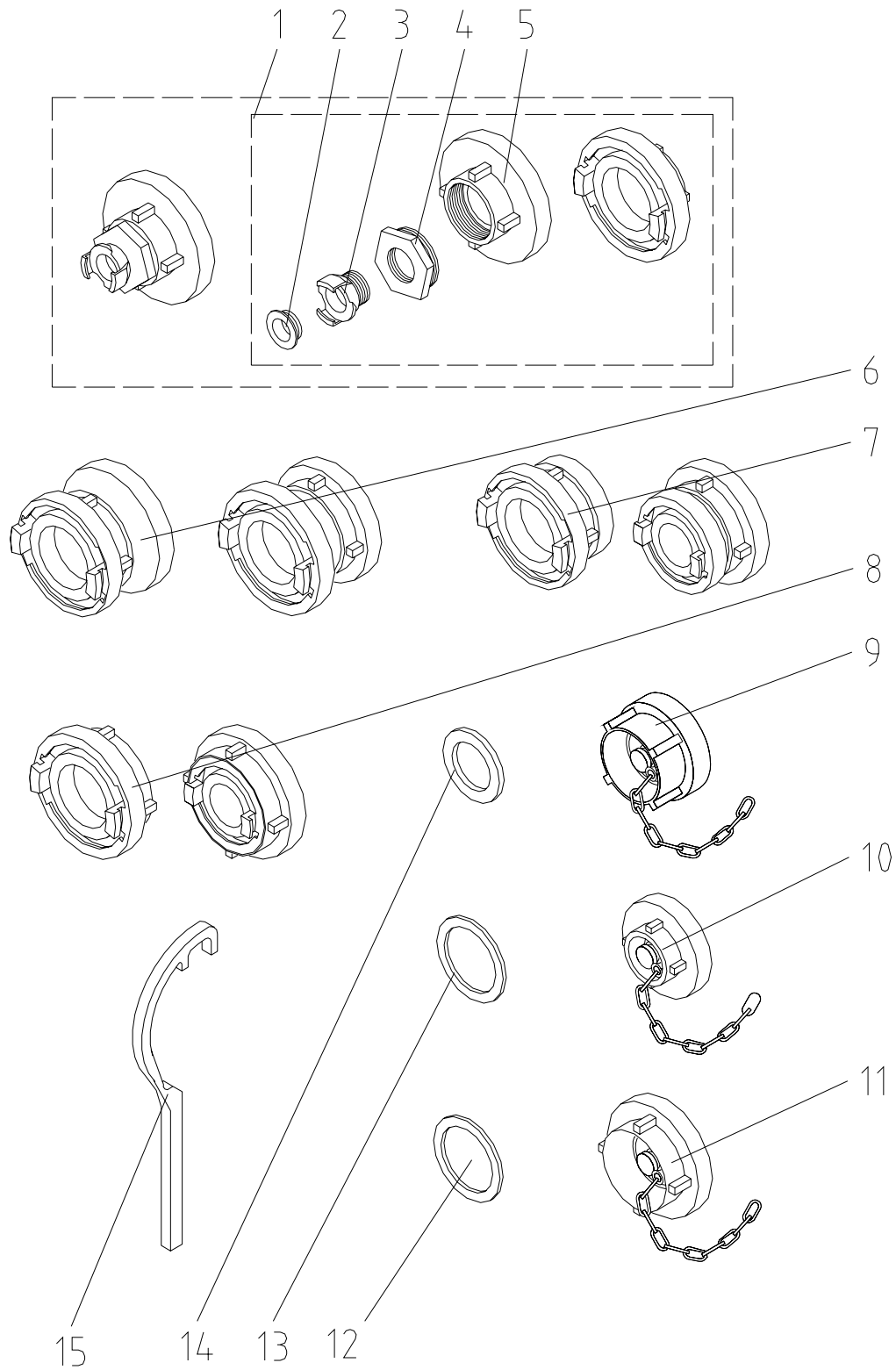
Spare parts list for geka / high-pressure coupling

Pos.	Qty.	Item no.	Description
1	1	20200800	Geka coupling 1" ext. thread
2	1	20200900	Geka coupling 1/2" ext. thread
3	1	20200910	Geka coupling 3/4" ext. thread
4	1	20201000	Geka coupling 3/8" ext. thread
5	1	20201300	Geka coupling 1/2" int. thread
6	1	20201310	Geka coupling 3/8" int. thread
7	1	20201600	Geka coupling 3/4" socket
8	1	20201610	Geka coupling 1" socket
9	1	20201670	High pressure coupling 1/2" socket with seal
10	1	20201680	High pressure coupling 3/4" socket with seal
11	1	20201700	Gasket Geka-coupling
12	1	20201691	High pressure coupling 1" ext. thread with seal
	1	00021341	NO LONGER AVAILABLE, NO REPLACEMENT
13	1	20201690	High pressure coupling 1" socket with seal
14	1	20201681	High pressure coupling 3/4" ext. thread with seal
15	1	20201620	Geka coupling 1" with turnable socket
16	1	20201650	Geka coupling dummy cover
17	1	20201400	Geka coupling with socket 9 mm
18	1	20201500	Geka coupling 1/2" socket
19	1	20201100	Geka coupling 1" int. thread
	1	00021342	Geka coupling with socket 1 1/4"
20	1	20201200	Geka coupling 3/4" int. thread
21	1	00011478	Gasket with fixing ring for suction coupling

Spare parts drawing for couplings

Spare parts list for couplings

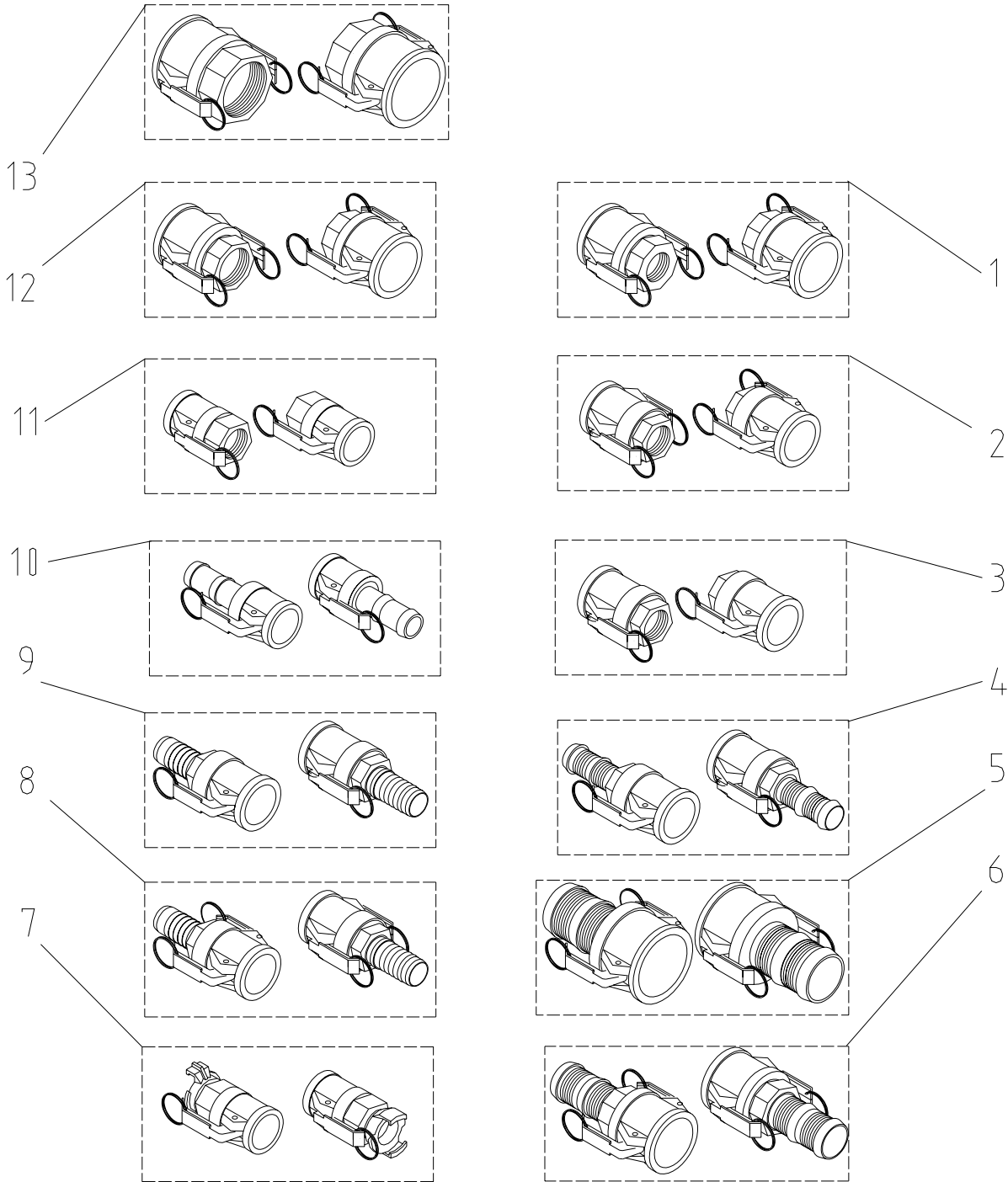
Pos.	Qty.	Item no.	Description
1	1	20655450	Coupling B with socket 75 mm DIN 14322
2	1	20655300	Coupling C socket 45 mm
3	1	20655000	Coupling C socket 52 mm
4	1	20655400	Coupling C 52 bore 45 mm
5	1	20655200	Coupling C 32 for no. 20 65 09 00
6	1	20655100	Coupling NE-Norm 60
7	1	20655800	Coupling B DIN 2" int. thread
8	1	20656000	Coupling B DIN 2 1/2" int. thread
9	1	20655900	Coupling B DIN 3" int. thread
10	1	20656600	Coupling C DIN 1" int. thread
11	1	20656510	Coupling C DIN 1 1/4" ext. thread
12	1	20656500	Coupling C DIN 1 1/4" int. thread
13	1	20656300	Coupling C DIN 1 1/2" int. thread
14	1	20656400	Coupling C DIN 1 1/2" ext. thread
15	1	20656101	Coupling C DIN 2" ext. thread
16	1	20656100	Coupling C DIN 2" int. thread
18	1	20656200	Coupling NE-Norm 2 1/2" int. thread

Spare parts drawing for B / C Couplings

Spare parts list for B / C Couplings

Pos.	Qty.	Item no.	Description
1	1	20171745	Reduction coupling B-Geka
2	1	20201700	Gasket Geka-coupling
3	1	20200800	Geka coupling 1" ext. thread
4	1	20205801	Reducing nipple 2" ext. thread 1" int. thread no. 241 zinc-pl. galv.
5	1	20655800	Coupling B DIN 2" int. thread
6	1	20657400	Reduction coupling NE-Norm-B DIN
7	1	20657300	Reduction coupling NE-Norm-C DIN
8	1	20657500	Reduction coupling C-B
9	1	20657100	Dummy cover with chain for coupling type C
10	1	20657200	Dummy cover with chain for coupling type NE-Norm 60
11	1	20657000	Dummy cover with chain for coupling type B
12	1	20658400	Gasket coupling B-DIN
13	1	20658300	Gasket coupling NE-Norm 60
14	1	20658200	Gasket coupling C-DIN
15	1	20658500	Wrench for hose coupling Storz B-C

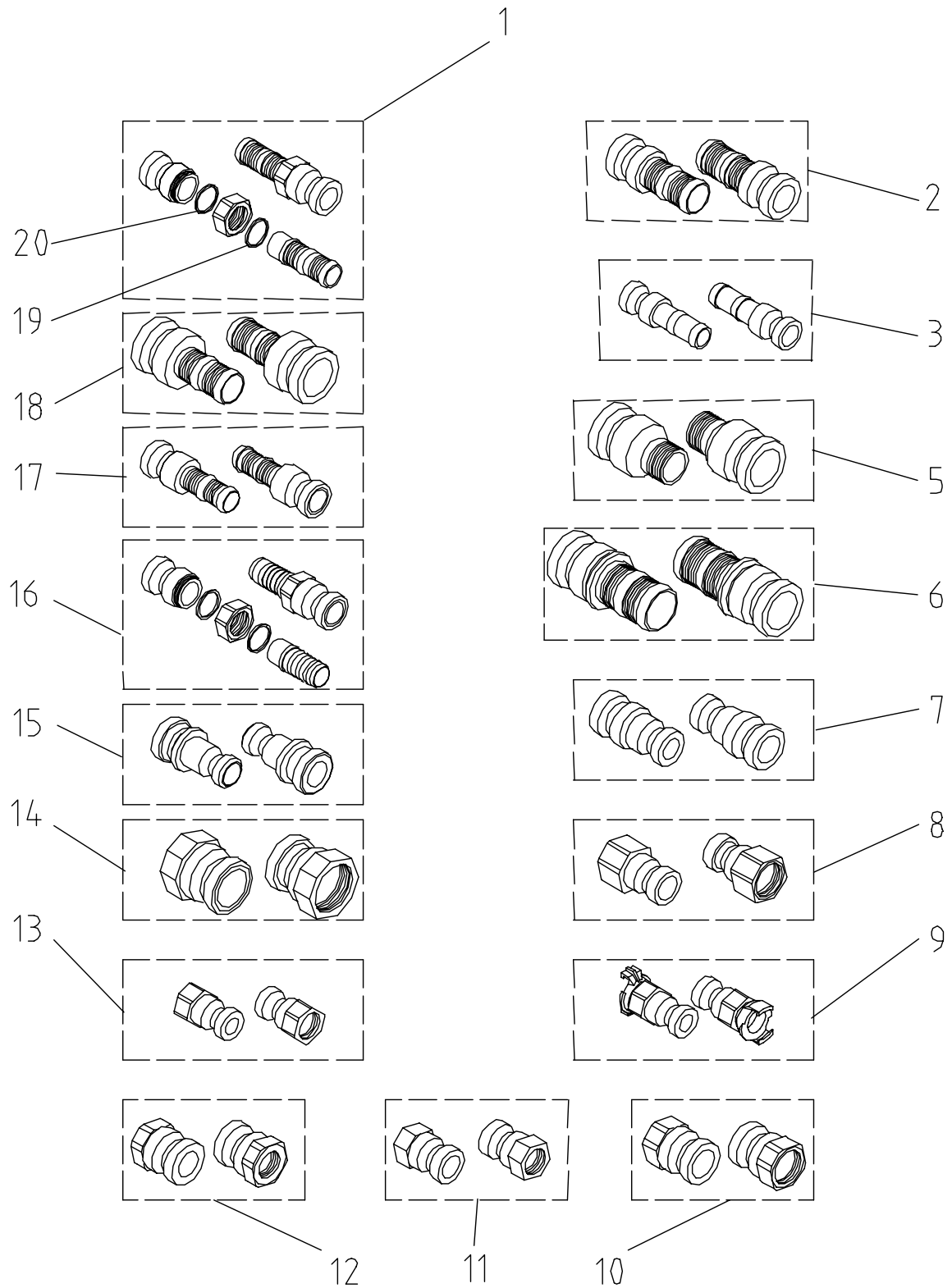
Spare parts drawing for couplings female



Spare parts list for couplings female

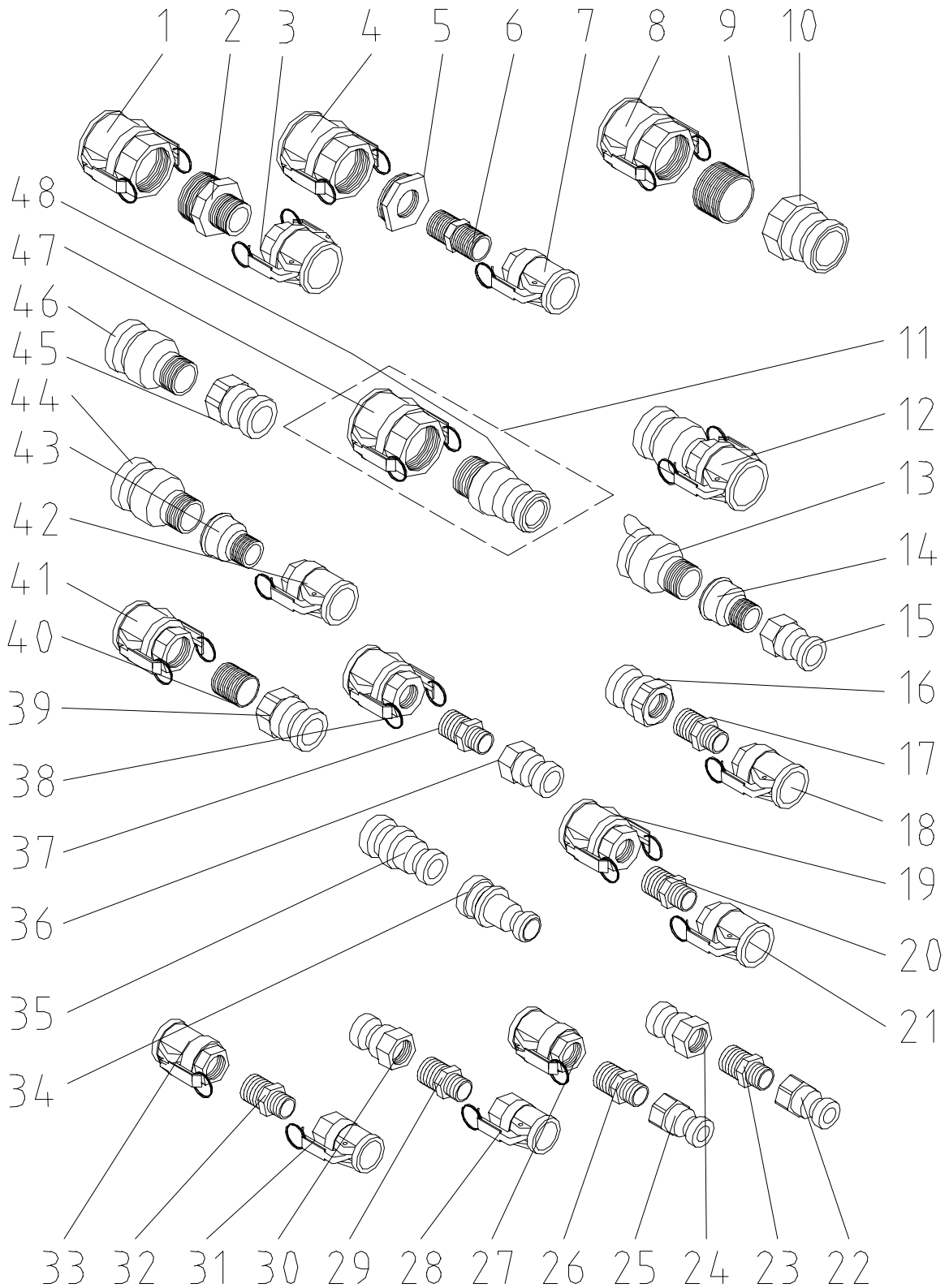
Pos.	Qty.	Item no.	Description
1	1	20200730	Coupling 35 female 1" int. thread with gasket
2	1	00040729	Coupling 35M part 1, int. thread alu turnable with 2 long handles
3	1	20199200	Coupling 25 female 1" int. thread, ID 24 with gasket
4	1	20199000	Coupling 25 female with socket ID 24
5	1	20200750	Coupling 50 female/S 50 socket
6	1	20200714	Coupling 35 female with socket ID 34
7	1	20200400	Coupling 25 female with Geka-Coupling ID 19
8	1	00002203	Coupling 25 female ID 24 (hydraulic) with 2 long handles
9	1	00001931	Coupling 25 female ID 24 (hydraulic)
10	1	20200000	Coupling 25 female with socket ID 19
11	1	20200200	Coupling 25 female 1" int. thread, ID 19 with gasket
12	1	20200790	Coupling 35 female 1 1/4" int. thread with gasket
13	1	20200780	Coupling 50 female 2" int. thread with gasket

Spare parts drawing for couplings male



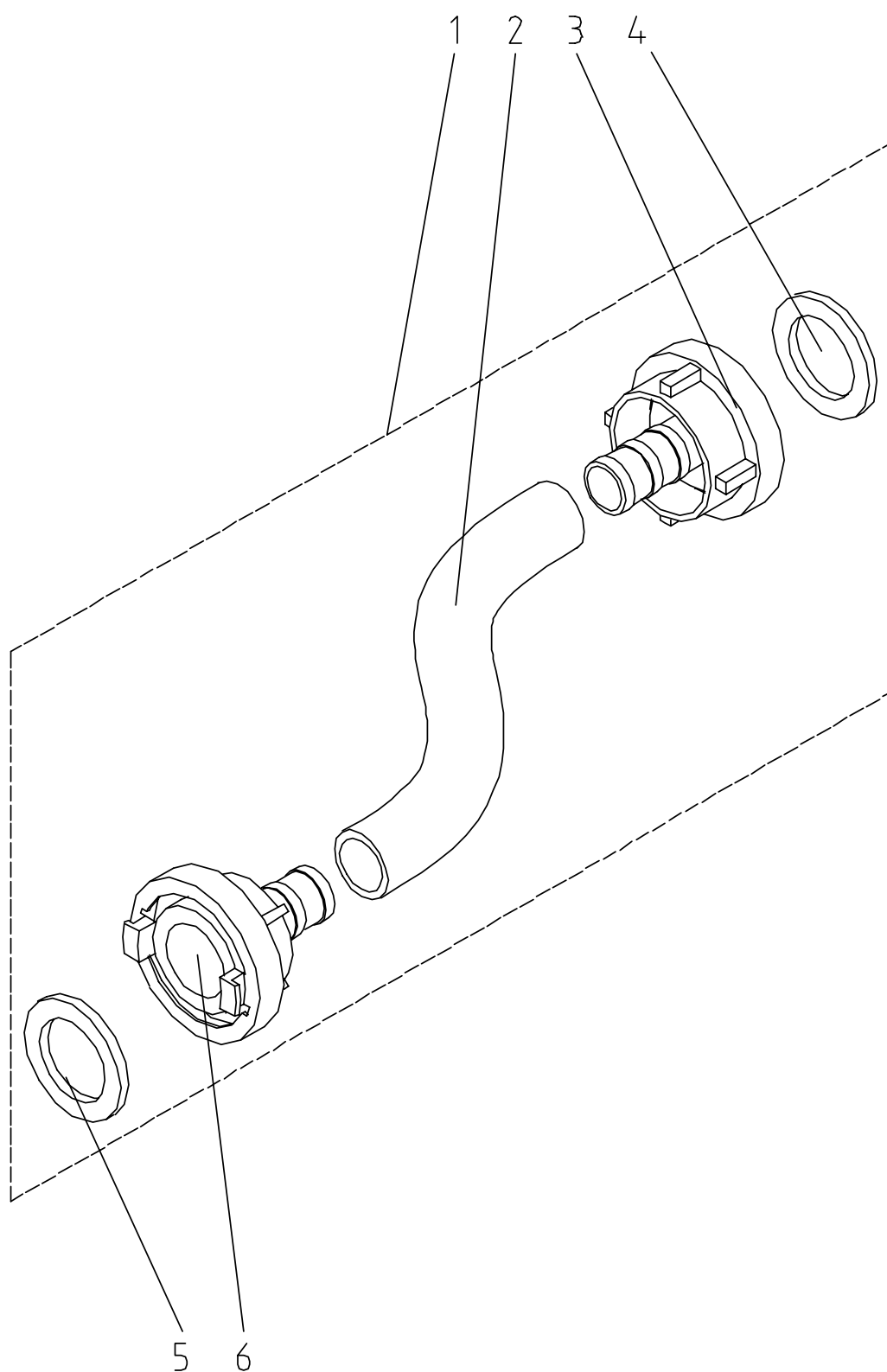
Spare parts list for couplings male

Pos.	Qty.	Item no.	Description
1	1	20191920	Coupling 25 male/25-socket turnable
2	1	20200721	Coupling 35 male with socket ID 34
3	1	20200100	Coupling 25 male with socket ID 19
5	1	20200793	Coupling 50 male 1 1/4" ext. thread
6	1	20200760	Coupling 50 male/S 50 socket
7	1	20200330	Coupling reduction 35/25 male ID 24
8	1	20199301	Coupling 25 male 1 1/4" int. thread
9	1	20200410	Coupling 25 male with Geka-Coupling ID 19
10	1	20200795	Coupling 35 male 1 1/4" int. thread
11	1	20199300	Coupling 25 male 1" int. thread ID 24
	1	00020431	NO LONGER AVAILABLE, REPLACEMENT 00037593
12	1	20200740	Coupling 35 male 1" int. thread
13	1	20200300	Coupling 25 male 1" int. thread ID 19
14	1	20200781	Coupling 50 male 2" int. thread
15	1	20200320	Coupling reduction 35/25 male ID 19
16	1	00001929	Coupling 25 male ID 24 (hydraulic) turnable
17	1	20199100	Coupling 25 male with socket ID 24
18	1	20200770	Coupling 50 male/S 35 socket
19	1	00007141	Washer PTFE 34 x 30
20	1	00007140	Washer PTFE 28 x 24

Spare parts drawing for couplings

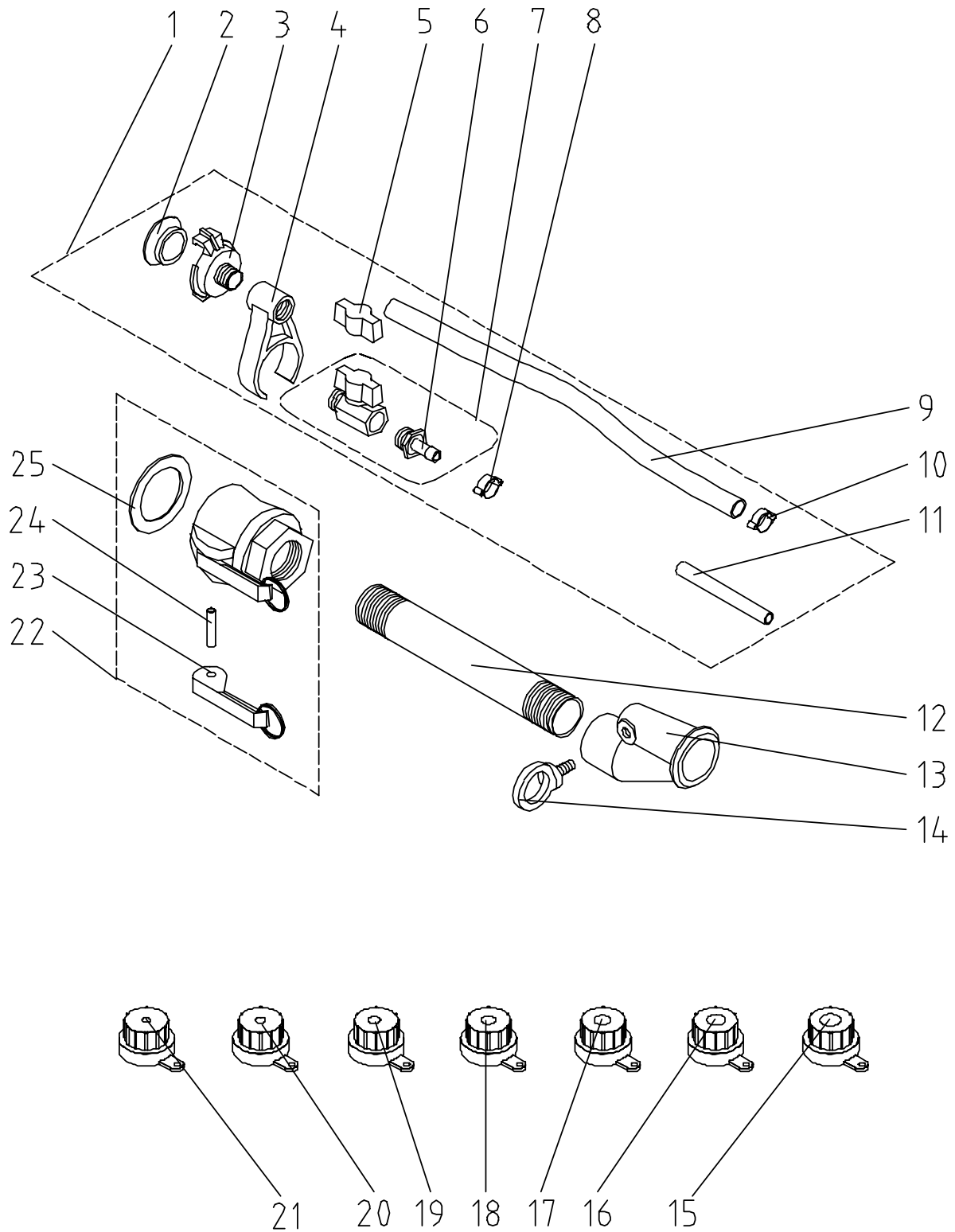
Spare parts list for couplings

Pos.	Qty.	Item no.	Description
1	1	20200780	Coupling 50 female 2" int. thread with gasket
2	1		Reducing nipple 2" ext. thread 1 1/4" ext. thread
3	1	20200790	Coupling 35 female 1 1/4" int. thread with gasket
4	1	20200780	Coupling 50 female 2" int. thread with gasket
5	1	20205801	Reducing nipple 2" ext. thread 1" int. thread no. 241 verz. galv.
6	1	20203284	Double nipple hex. 1" no. 280 galv.
7	1	20199200	Coupling 25 female 1" int. thread, ID 24 with gasket
8	1	20200780	Coupling 50 female 2" int. thread with gasket
9	1	20203255	Double nipple 2" x 40 no. 23 galv.
10	1	20200781	Coupling 50 male 2" int. thread
11	1	20200792	Adapter coupling 50 female/35 male
12	1	20200791	Adapter coupling 35 female/50 male
13	1	20200793	Coupling 50 male 1 1/4" ext. thread
14	1	20205500	Reducing socket 1 1/4" int. thread 1" ext. thread no.246 galv.
15	1	20199300	Coupling 25 male 1" int. thread ID 24
16	1	20200740	Coupling 35 male 1" int. thread
17	1	20203284	Double nipple hex. 1" no. 280 galv.
18	1	20199200	Coupling 25 female 1" int. thread, ID 24 with gasket
19	1	20200730	Coupling 35 female 1" int. thread with gasket
20	1	20203284	Double nipple hex. 1" no. 280 galv.
21	1	20199200	Coupling 25 female 1" int. thread, ID 24 with gasket
22	1	20200300	Coupling 25 male 1" int. thread ID 19
23	1	20203284	Double nipple hex. 1" no. 280 galv.
24	1	20199300	Coupling 25 male 1" int. thread ID 24
25	1	20200300	Coupling 25 male 1" int. thread ID 19
26	1	20203284	Double nipple hex. 1" no. 280 galv.
27	1	20199200	Coupling 25 female 1" int. thread, ID 24 with gasket
28	1	20200200	Coupling 25 female 1" int. thread, ID 19 with gasket
29	1	20203284	Double nipple hex. 1" no. 280 galv.
30	1	20199300	Coupling 25 male 1" int. thread ID 24
31	1	20200200	Coupling 25 female 1" int. thread, ID 19 with gasket
32	1	20203284	Double nipple hex. 1" no. 280 galv.
33	1	20199200	Coupling 25 female 1" int. thread, ID 24 with gasket
34	1	20200320	Coupling reduction 35/25 male ID 19
35	1	20200330	Coupling reduction 35/25 male ID 24
36	1	20199300	Coupling 25 male 1" int. thread ID 24
37	1	20203284	Double nipple hex. 1" no. 280 galv.
38	1	20200730	Coupling 35 female 1" int. thread with gasket
39	1	20200795	Coupling 35 male 1 1/4" int. thread
40	1	20203260	Double nipple 1 1/4" x 40 no. 23 galv.
41	1	20200790	Coupling 35 female 1 1/4" int. thread with gasket
42	1	20199200	Coupling 25 female 1" int. thread, ID 24 with gasket
43	1	20205500	Reducing socket 1 1/4" int. thread 1" ext. thread no. 246 galv.
44	1	20200793	Coupling 50 male 1 1/4" ext. thread
45	1	20200795	Coupling 35 male 1 1/4" int. thread
46	1	20200793	Coupling 50 male 1 1/4" ext. thread
47	1	20200780	Coupling 50 female 2" int. thread with gasket
48	1	20200741	Coupling 35 male 2" ext. thread

Spare parts drawing for conveying hoses

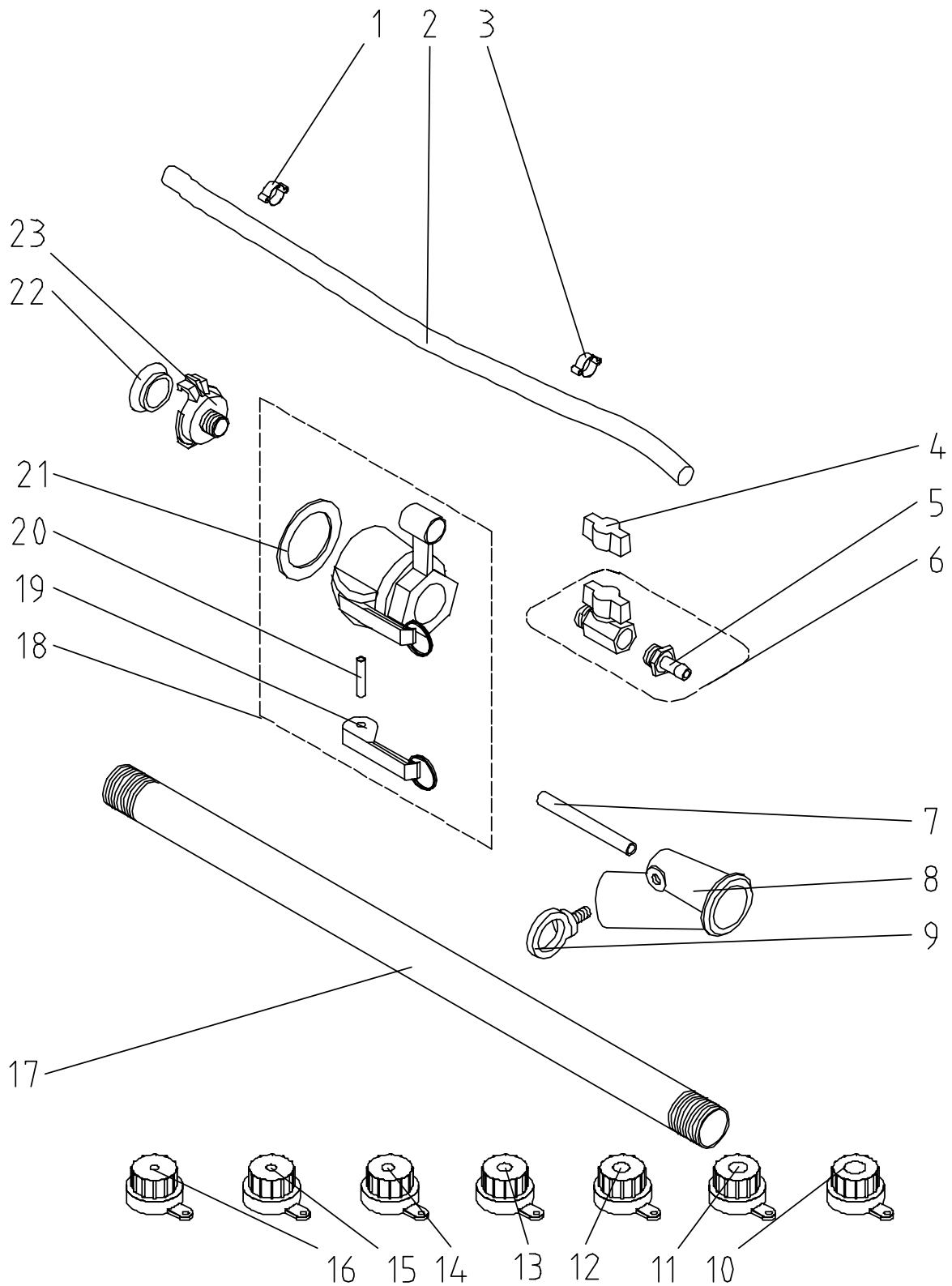
Spare parts list for conveying hoses

Pos.	Qty.	Item no.	Description
1	1	20650900	Rubber pressure hose NW32 approx. 7.5 m with C-couplings attached to both ends
2	1		Rubber pressure hose NW 32
3	1	20655200	Coupling C 32 for no. 20 65 09 00
4	1	20658200	Gasket coupling C-DIN
5	1	20658200	Gasket coupling C-DIN
6	1	20655200	Coupling C 32 for no. 20 65 09 00

Spare parts drawing for spraying gun 25 mm

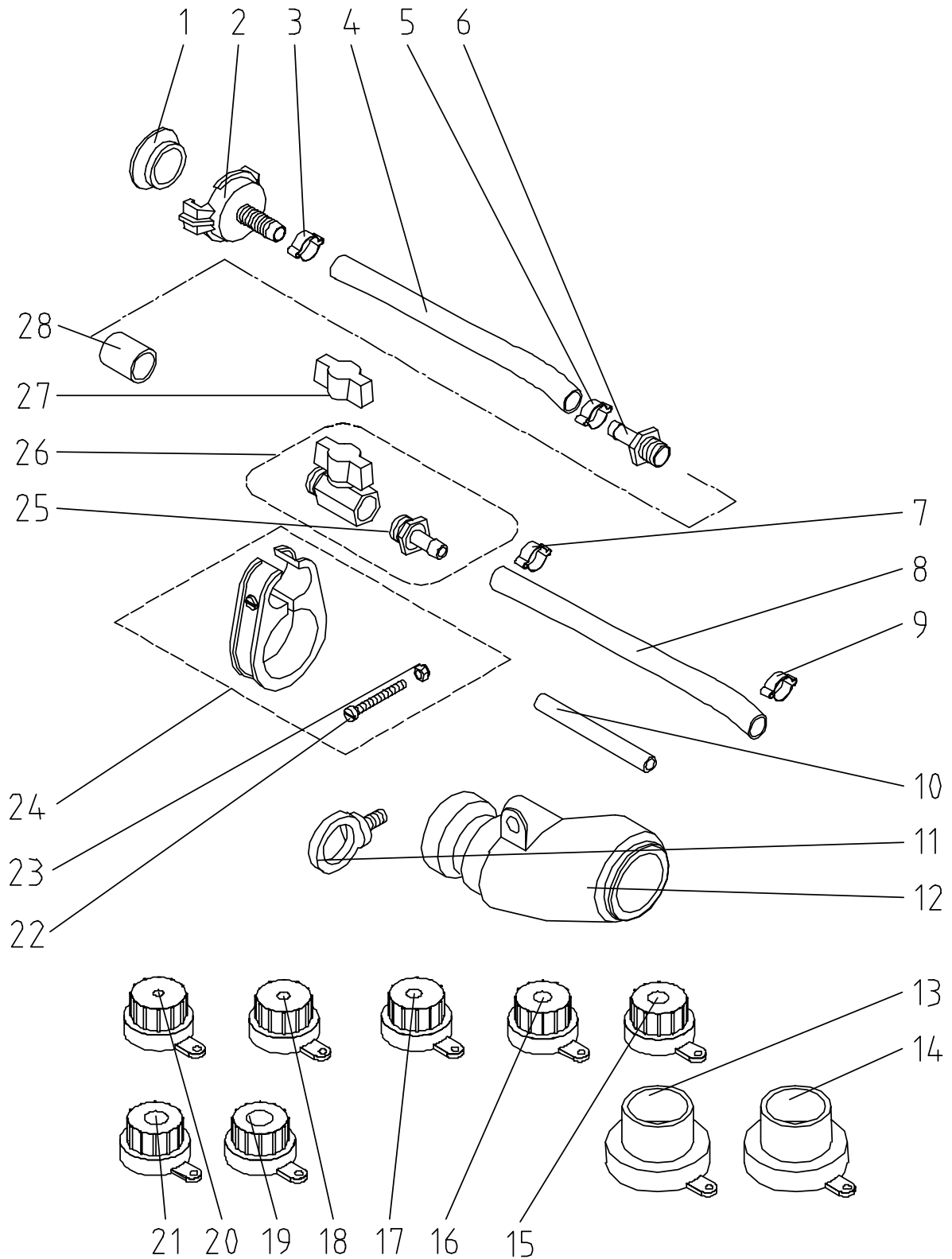
Spare parts list for spraying gun 25 mm

Pos.	Qty.	Item no.	Description
	1	20190002	Spraying gun 25 mm ID24, cap 14 mm
1	1	20191800	Air connection for spray gun
2	1	20201700	Gasket Geka-coupling
3	1	20201000	Geka coupling 3/8" ext. thread
4	1	20190200	Hanging bracket
5	1	20190310	Knob for air tap with screw
6	1	20190430	Hose screw joint 3/8" ext. thread socket 9 mm
7	1	20190320	Tap 3/8" ext. thread with socket 10 mm
8	1	20202600	Hose clip 17-20 packing unit=10ST
9	1	20190510	Hose section 9 mm x 310 mm
10	1	20202600	Hose clip 17-20 packing unit=10ST
11	1	20190100	Air nozzle tube 130 mm
12	1	20191900	Threaded pipe 1" x 200 (PA)
13	1	20190610	Spraying head straight
14	1	20209980	Ring screw M10 x 19 DIN 580 galv.
15	1	20191200	Spraying cap 20 mm
16	1	20191100	Spraying cap 18 mm packing unit = 10 pieces
17	1	20191000	Spraying cap 16 mm packing unit = 10 pieces
18	1	20190900	Spraying cap 14 mm packing unit = 10 pieces
19	1	20190800	Spraying cap 12 mm packing unit = 10 pieces
20	1	20190700	Spraying cap 10 mm packing unit = 10 pieces
21	1	20190701	Spraying cap 8 mm packing unit = 10 pieces
22	1	20199200	Coupling 25 female 1" int. thread, ID 24 with gasket
23	1	20200500	Long handle with safety ring
24	1	20200600	Dowel pin 6 x 30 DIN 7344 packing unit = 20 pieces
25	1	20199600	Gasket 25 female coupling ID 24

Spare parts drawing for spraying gun 25 mm

Spare parts list for spraying gun 25 mm

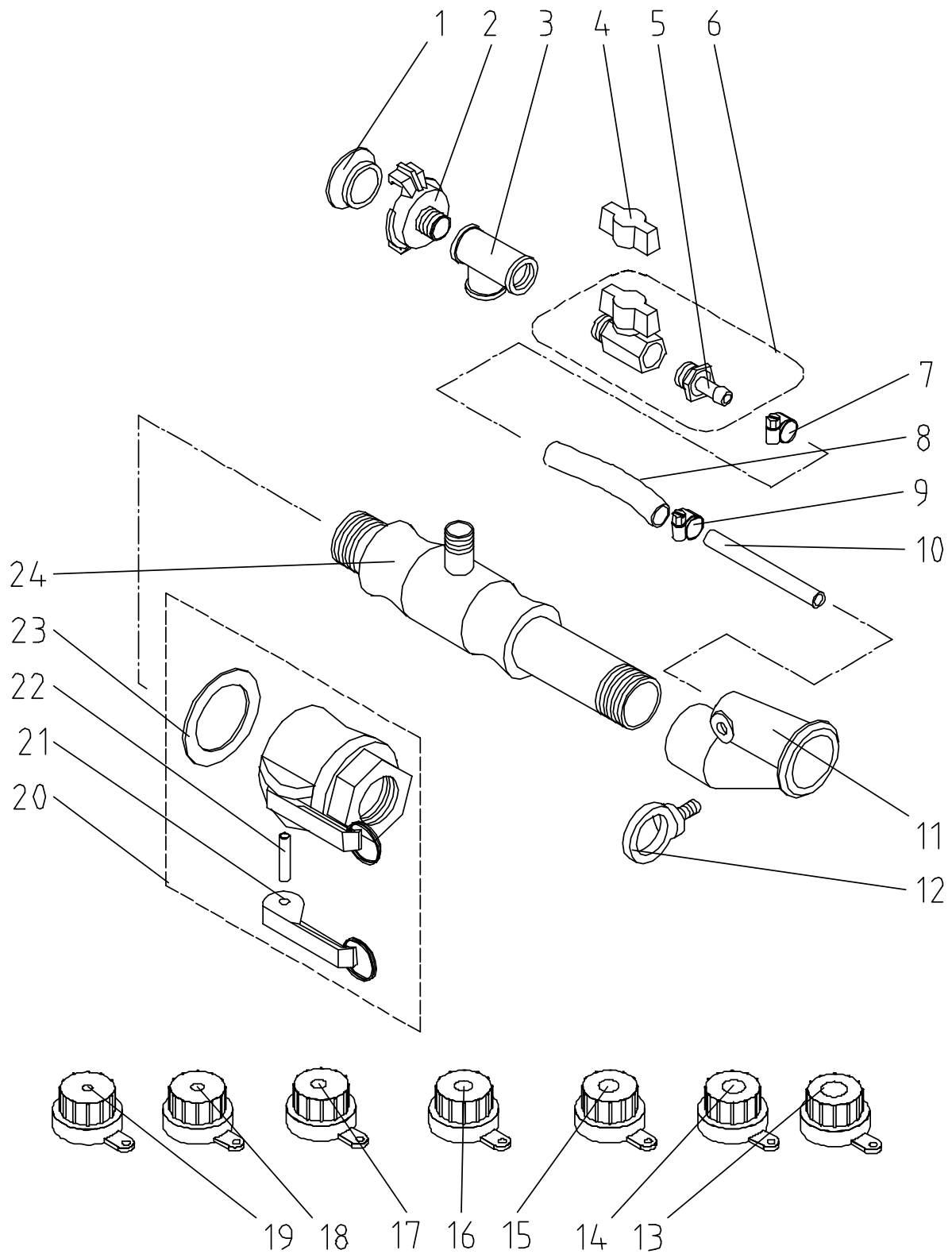
Pos.	Qty.	Item no.	Description
	1	20190011	Spraying gun 25 mm ID24, nozzle 14 mm, 30° long version
1	1	20202610	Hose clip 15-18 packing unit=10ST
2	1	20190520	Hose section 9 mm x 565 mm
3	1	20202610	Hose clip 15-18 packing unit=10ST
4	1	20190310	Knob for air tap with screw
5	1	20190430	Hose screw joint 3/8" ext. thread socket 9 mm
6	1	20190320	Tap 3/8" ext. thread with socket 10 mm
7	1	20190100	Air nozzle tube 130 mm
8	1	20190600	Spraying head 30 degrees angled
9	1	20209980	Ring screw M10 x 19 DIN 580 galv.
10	1	20191200	Spraying cap 20 mm
11	1	20191100	Spraying cap 18 mm packing unit = 10 pieces
12	1	20191000	Spraying cap 16 mm packing unit = 10 pieces
13	1	20190900	Spraying cap 14 mm packing unit = 10 pieces
14	1	20190800	Spraying cap 12 mm packing unit = 10 pieces
15	1	20190700	Spraying cap 10 mm packing unit = 10 pieces
16	1	20190710	-----
17	1	20191910	Threaded pipe 1" x 600 (PA)
18	1	20190211	Hanging bracket with coupling for spray gun long version int. diam 24 mm
19	1	20200500	Long handle with safety ring
20	1	20200600	Dowel pin 6 x 30 DIN 7344 packing unit = 20 pieces
21	1	20199600	Gasket 25 female coupling ID 24
22	1	20201700	Gasket Geka-coupling
23	1	20201000	Geka coupling 3/8" ext. thread

Spare parts drawing for spraying gun 35 mm

Spare parts list for spraying gun 35 mm

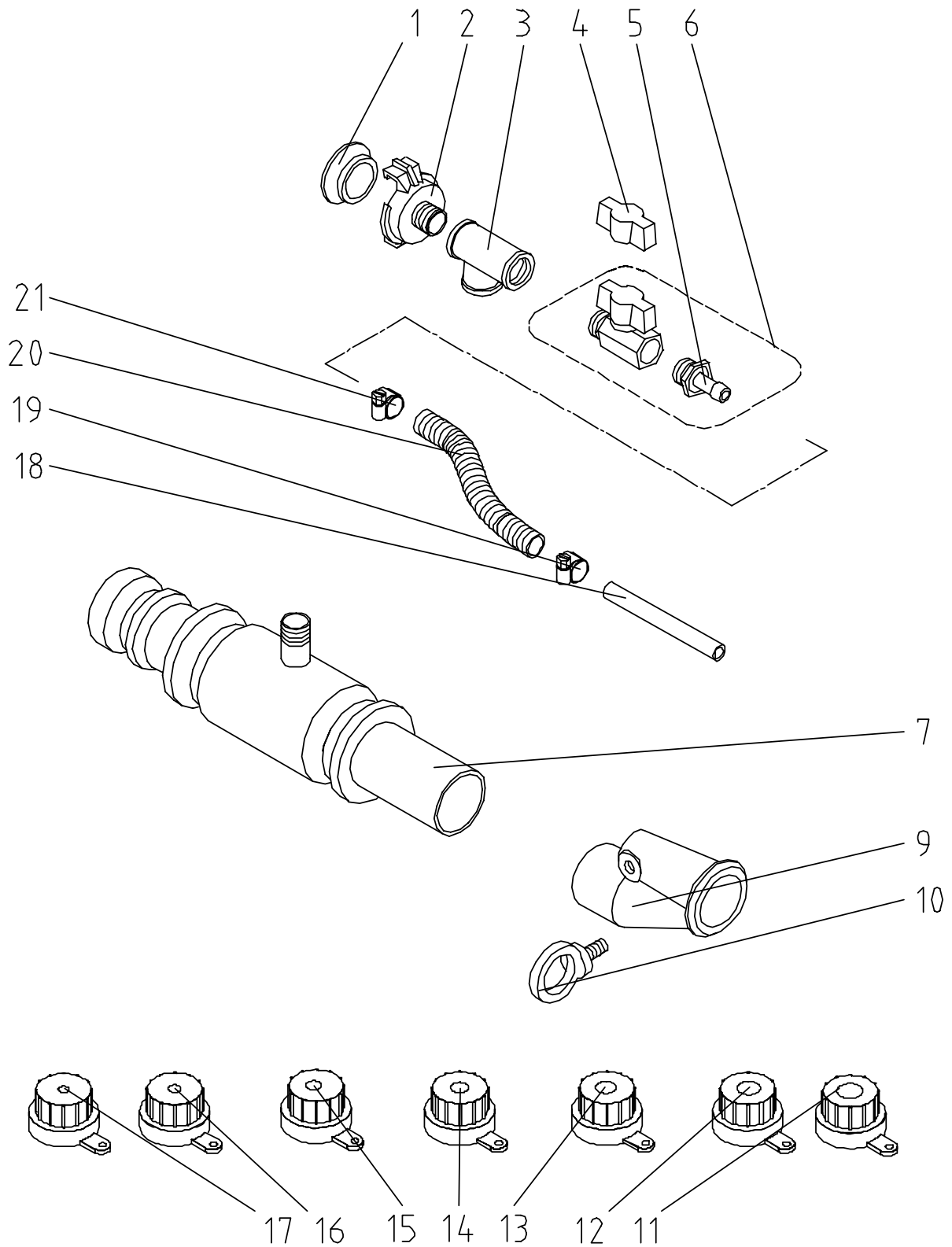
Pos.	Qty.	Item no.	Description
	1	20196000	Spraying gun 35 mm
1	1	20201700	Gasket Geka-coupling
2	1	20201400	Geka coupling with socket 9mm
3	1	20202610	Hose clip 15-18 packing unit=10ST
4	1	20190510	Hose section 9 mm x 310 mm
5	1	20202610	Hose clip 15-18 packing unit=10ST
6	1	20190400	Hose screw joint 3/8" ext. thread socket 1/2"
7	1	20202610	Hose clip 15-18 packing unit=10ST
8	1	20190510	Hose section 9 mm x 310 mm
9	1	20202610	Hose clip 15-18 packing unit=10ST
10	1	20190100	Air nozzle tube 130 mm
11	1	20209980	Ring screw M10 x 19 DIN 580 galv.
12	1	20196100	Spraying head 35 mm
13	1	20196500	Spraying cap 18 mm for spraying gun 20 19 60 00
14	1	20196600	Spraying cap 20 mm for spraying gun 20 19 60 00
15	1	20191000	Spraying cap 16 mm packing unit = 10 pieces
16	1	20190900	Spraying cap 14 mm packing unit = 10 pieces
17	1	20190800	Spraying cap 12 mm packing unit = 10 pieces
18	1	20190700	Spraying cap 10 mm packing unit = 10 pieces
19	1	20191200	Spraying cap 20 mm
20	1	20190701	Spraying cap 8 mm packing unit = 10 pieces
21	1	20191100	Spraying cap 18 mm packing unit = 10 pieces
22	1	20207109	Cheese-head screw M5 x 40 DIN 84
23	1	20206602	Safety nut M5 DIN 985 galv.
24	1	20196200	Hanging bracket with coupling for spray gun int. diam 35 mm
25	1	20190430	Hose screw joint 3/8" ext. thread socket 9 mm
26	1	20190300	Tap 3/8" ext. thread with socket 10 mm with hole
27	1	20190310	Knob for air tap with screw
28	1	20203002	Socket 3/8" no. 16 galv.

Spare parts drawing for spraying gun 25 mm with squeeze valve



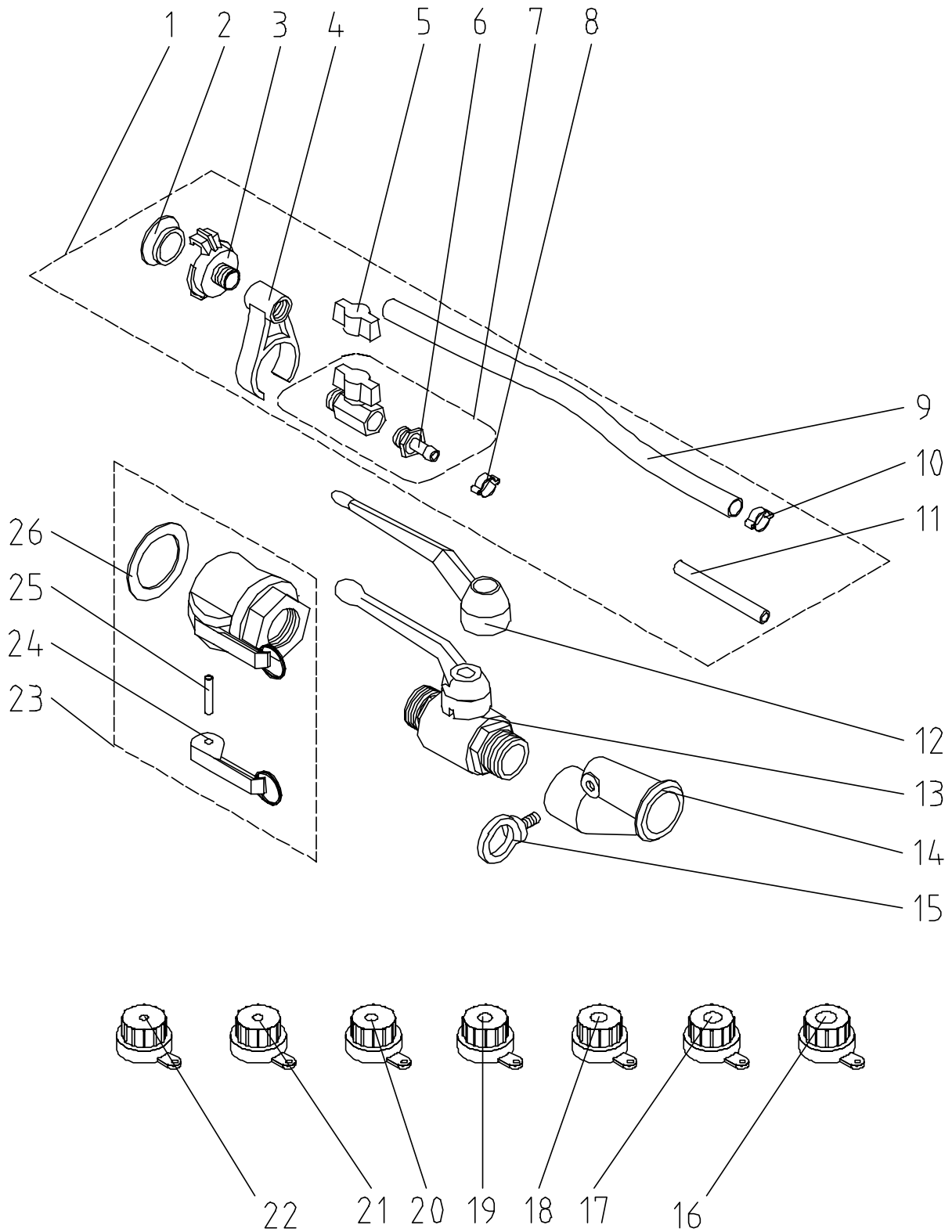
Spare parts list for spraying gun 25 mm with squeeze valve

Pos.	Qty.	Item no.	Description
	1	20192001	NO LONGER AVAILABLE, REPLACEMENT 00 04 62 26
1	1	20201700	Gasket Geka coupling
2	1	20201000	Geka coupling 3/8" ext. thread
3	1	20204100	T-piece 3/8" int. thread no. 130 galv.
4	1	20190310	Knob for air tap with screw
5	1	20190430	Hose screw joint 3/8" ext. thread socket 9 mm
6	1	20190320	Tap 3/8" ext. thread with socket 10 mm
7	1	20202200	Hose clip 17/12
8	1	20190500	NO LONGER AVAILABLE REPLACEMENT 00001941
9	1	20202200	Hose clip 17/12
10	1	20192500	Air nozzle tube 90 mm for squeeze valve spraying gun
11	1	20190610	Spraying head straight
12	1	20209980	Ring screw M10 x 19 DIN 580 galv.
13	1	20191200	Spraying cap 20 mm
14	1	20191100	Spraying cap 18 mm packing unit = 10 pieces
15	1	20191000	Spraying cap 16 mm packing unit = 10 pieces
16	1	20190900	Spraying cap 14 mm packing unit = 10 pieces
17	1	20190800	Spraying cap 12 mm packing unit = 10 pieces
18	1	20190700	Spraying cap 10 mm packing unit = 10 pieces
19	1	20190701	Spraying cap 8 mm packing unit = 10 pieces
20	1	20199200	Coupling 25 female 1" int. thread, ID 24 with gasket
21	1	20200500	Long handle with safety ring
22	1	20200600	Dowel pin 6 x 30 DIN 7344 packing unit = 20 pieces
23	1	20199600	Gasket 25 female coupling ID 24
24	1	20192100	Squeeze valve 25 mm

Spare parts drawing for spraying gun 35 mm with squeeze valve

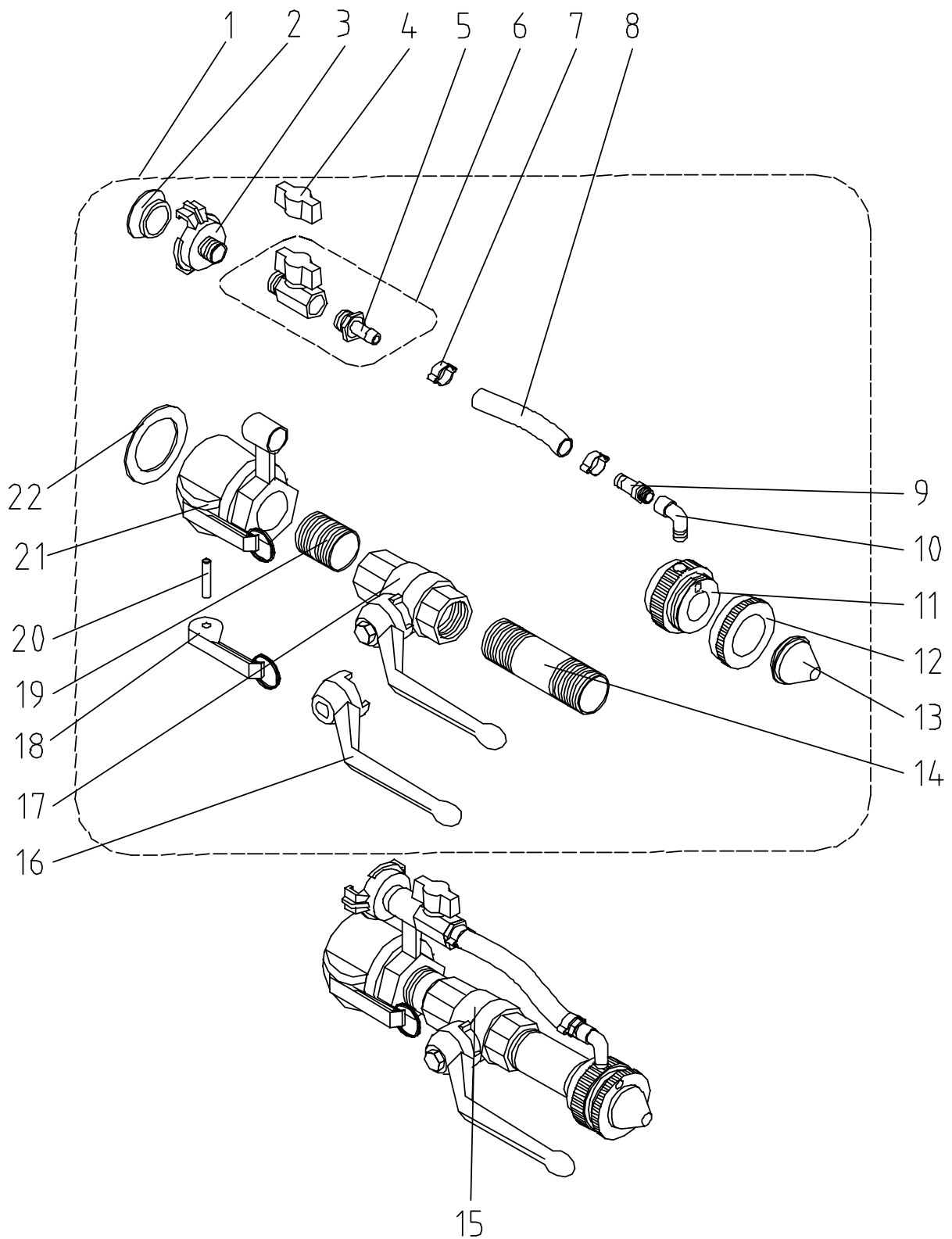
Spare parts list for spraying gun 35 mm with squeeze valve

Pos.	Qty.	Item no.	Description
	1	20192700	Squeeze valve spraying gun 35 mm, ID34, spraying cap 14 mm
1	1	20201700	Gasket Geka-coupling
2	1	20201000	Geka coupling 3/8" ext. thread
3	1	20204100	T-piece 3/8" int. thread no. 130 galv.
4	1	20190310	Knob for air tap with screw
5	1	20190430	Hose screw joint 3/8" ext. thread socket 9 mm
6	1	20190320	Tap 3/8" ext. thread with socket 10 mm
7	1	20192710	Squeeze valve 35 mm
9	1	20190610	Spraying head straight
10	1	20209980	Ring screw M10 x 19 DIN 580 galv.
11	1	20191200	Spraying cap 20 mm
12	1	20191100	Spraying cap 18 mm packing unit = 10 pieces
13	1	20191000	Spraying cap 16 mm packing unit = 10 pieces
14	1	20190900	Spraying cap 14 mm packing unit = 10 pieces
15	1	20190800	Spraying cap 12 mm packing unit = 10 pieces
16	1	20190700	Spraying cap 10 mm packing unit = 10 pieces
17	1	20190701	Spraying cap 8 mm packing unit = 10 pieces
18	1	20192500	Air nozzle tube 90 mm for squeeze valve spraying gun
19	1	20202200	Hose clip 17/12
20	1	20190500	NO LONGER AVAILABLE REPLACEMENT 00001941
21	1	20202200	Hose clip 17/12

Spare parts drawing for spraying gun 25 mm with tap

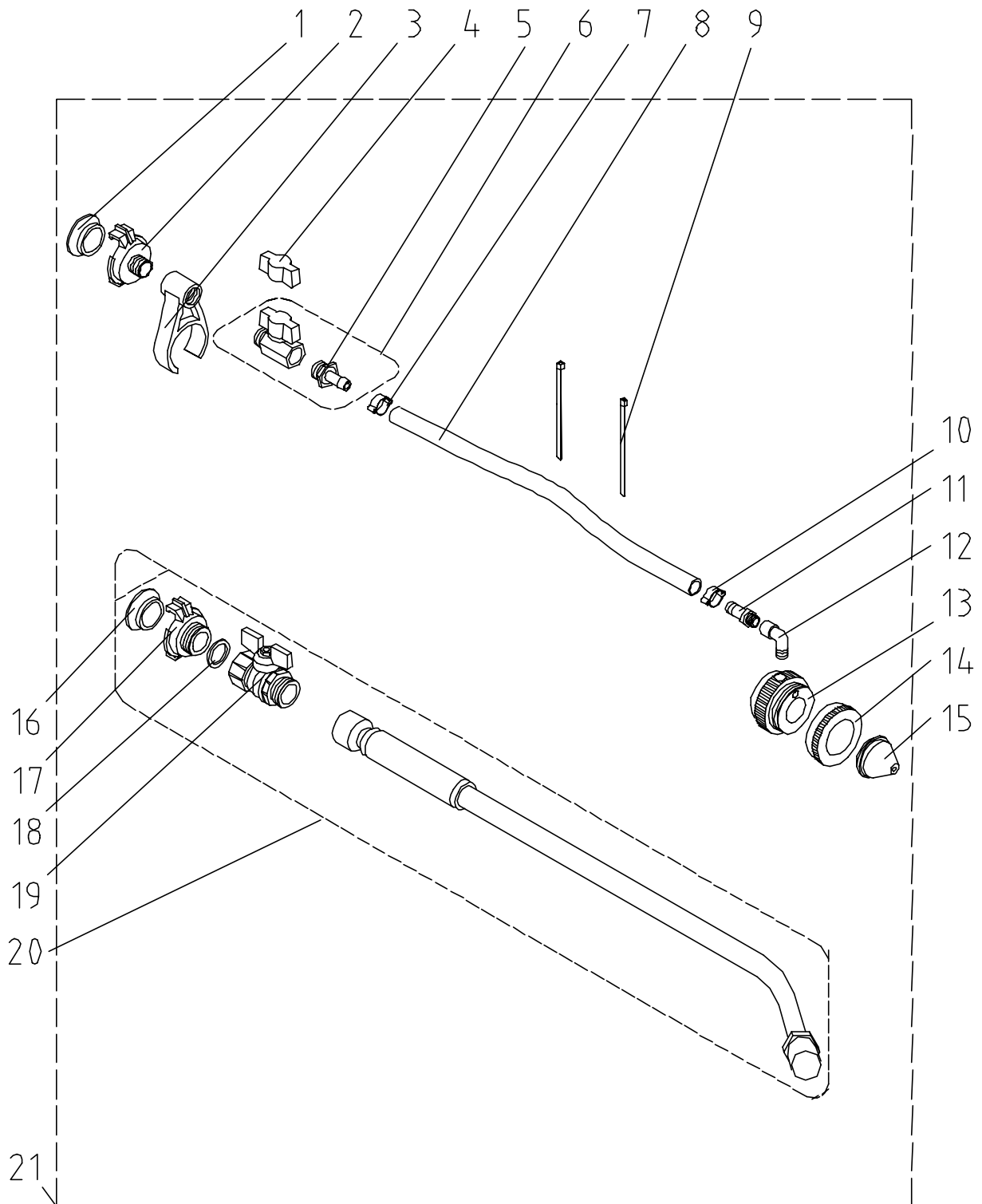
Spare parts list for spraying gun 25 mm with tap

Pos.	Qty.	Item no.	Description
	1	00001399	Spraying gun 25 mm ID24, with tap
1	1	20191800	Air connection for spray gun
2	1	20201700	Gasket Geka-coupling
3	1	20201000	Geka coupling 3/8" ext. thread
4	1	20190200	Hanging bracket
5	1	20190310	Knob for air tap with screw
6	1	20190430	Hose screw joint 3/8" ext. thread socket 9 mm
7	1	20190320	Tap 3/8" ext. thread with socket 10 mm
8	1	20202600	Hose clip 17-20 packing unit=10ST
9	1	20190510	Hose section 9 mm x 310 mm
10	1	20202600	Hose clip 17-20 packing unit=10ST
11	1	20190100	Air nozzle tube 130 mm
12	1	20215154	Hand knob for tap (20 21 51 53)
13	1	00001511	Tap 1" ext. thread DIN 2990 PN 40 long lever
14	1	20190610	Spraying head straight
15	1	20209980	Ring screw M10 x 19 DIN 580 galv.
16	1	20191200	Spraying cap 20 mm
17	1	20191100	Spraying cap 18 mm packing unit = 10 pieces
18	1	20191000	Spraying cap 16 mm packing unit = 10 pieces
19	1	20190900	Spraying cap 14 mm packing unit = 10 pieces
20	1	20190800	Spraying cap 12 mm packing unit = 10 pieces
21	1	20190700	Spraying cap 10 mm packing unit = 10 pieces
22	1	20190701	Spraying cap 8 mm packing unit = 10 pieces
23	1	20199200	Coupling 25 female 1" int. thread, ID 24 with gasket
24	1	20200500	Long handle with safety ring
25	1	20200600	Dowel pin 6 x 30 DIN 7344 packing unit = 20 pieces
26	1	20199600	Gasket 25 female coupling ID 24

Spare parts drawing for spraying gun for decorative plasters

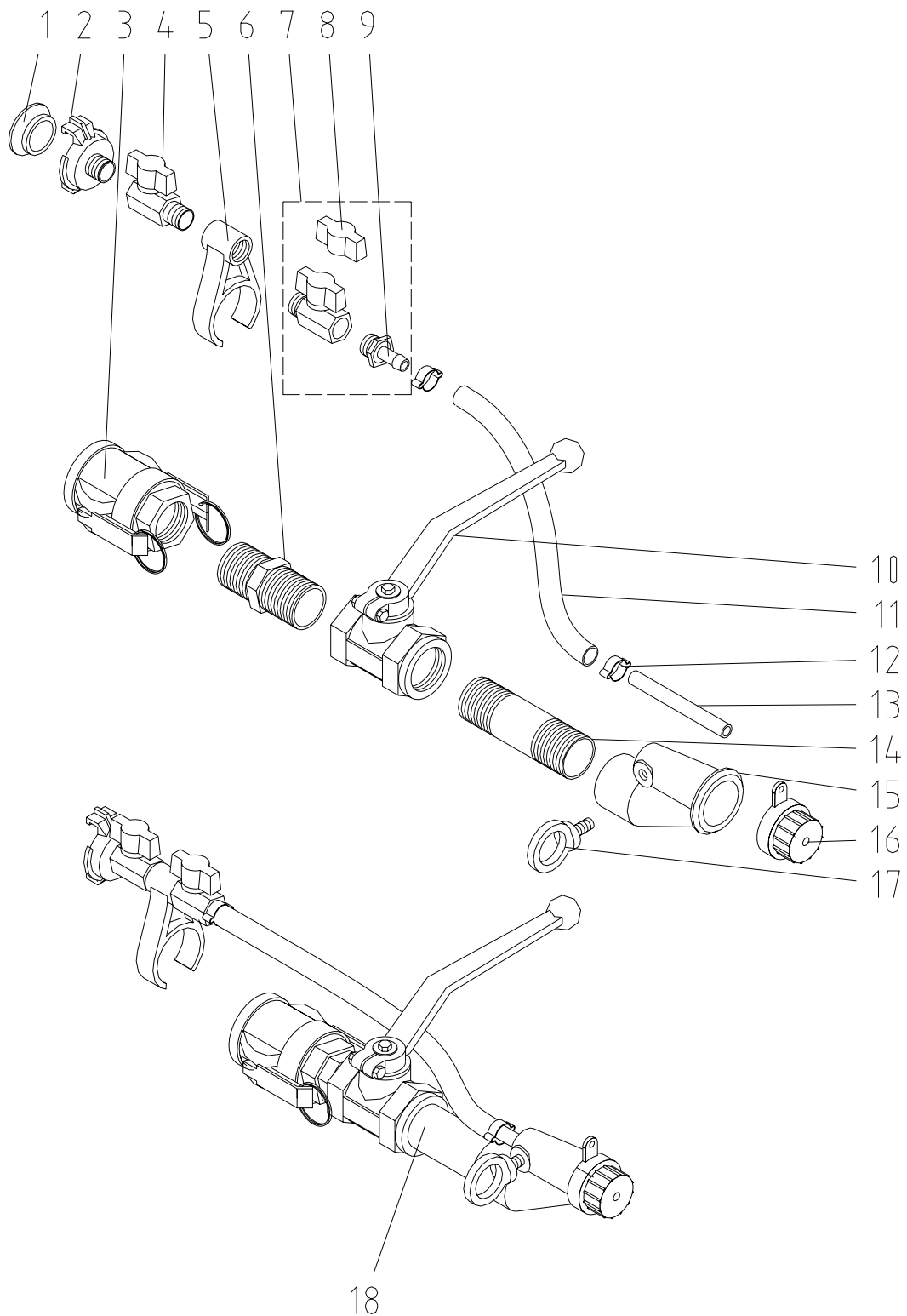
Spare parts list for spraying gun for decorative plasters

Pos.	Qty.	Item no.	Description
1	1	20195900	Spraying gun for decorative plasters
2	1	20201700	Gasket Geka-coupling
3	1	20201000	Geka coupling 3/8" ext. thread
4	1	20190310	Knob for air tap with screw
5	1	20190430	Hose screw joint 3/8" ext. thread socket 9 mm
6	1	20190320	Tap 3/8" ext. thread with socket 10 mm
7	2	20202611	Hose clip 15-18 (P)
8	1	20190500	NO LONGER AVAILABLE REPLACEMENT 00001941
9	1	20190440	Hose screw joint 1/8" ext. thread socket 9 mm
10	1	20203652	Curved section 1/8" int. thread ext. thread MS
11	1	20195902	Screwed joint for spraying gun 20 19 59 00
12	1	20195903	Connection nut for 20 19 59 00
13	1	20191300	Nozzle, plastic 10 mm for spray gun 20 19 59 00
	1	00008593	Nozzle, stainless steel 4 mm for spray gun 20 19 59 00
	1	00008592	Nozzle, stainless steel 6 mm for spray gun 20 19 59 00
	1	00008591	Nozzle, stainless steel 8 mm for spray gun 20 19 59 00
	1	00008590	Nozzle, stainless steel 10 mm for spray gun 20 19 59 00
	1	00008589	Nozzle, stainless steel 12 mm for spray gun 20 19 59 00
14	1	20191902	Threaded pipe 1" x 100 (PA)
15	1	20195900	Spraying gun for decorative plasters
16	1	20215154	Hand knob for tap (20 21 51 53)
17	1	20215153	Tap 1" int. thread DIN 2990 PN 40 long lever
18	1	20200500	Long handle with safety ring
19	1	20203256	Double nipple 1" x 40 no. 23 galv.
20	1	20200600	Dowel pin 6 x 30 DIN 7344 packing unit = 20 pieces
21	1	20190211	Hanging bracket with coupling for spray gun long version int. diam 24 mm
22	1	20199600	Gasket 25 female coupling ID 24

**Spare parts drawing for spraying gun with spraying head for concrete primer
(Beto contact)**

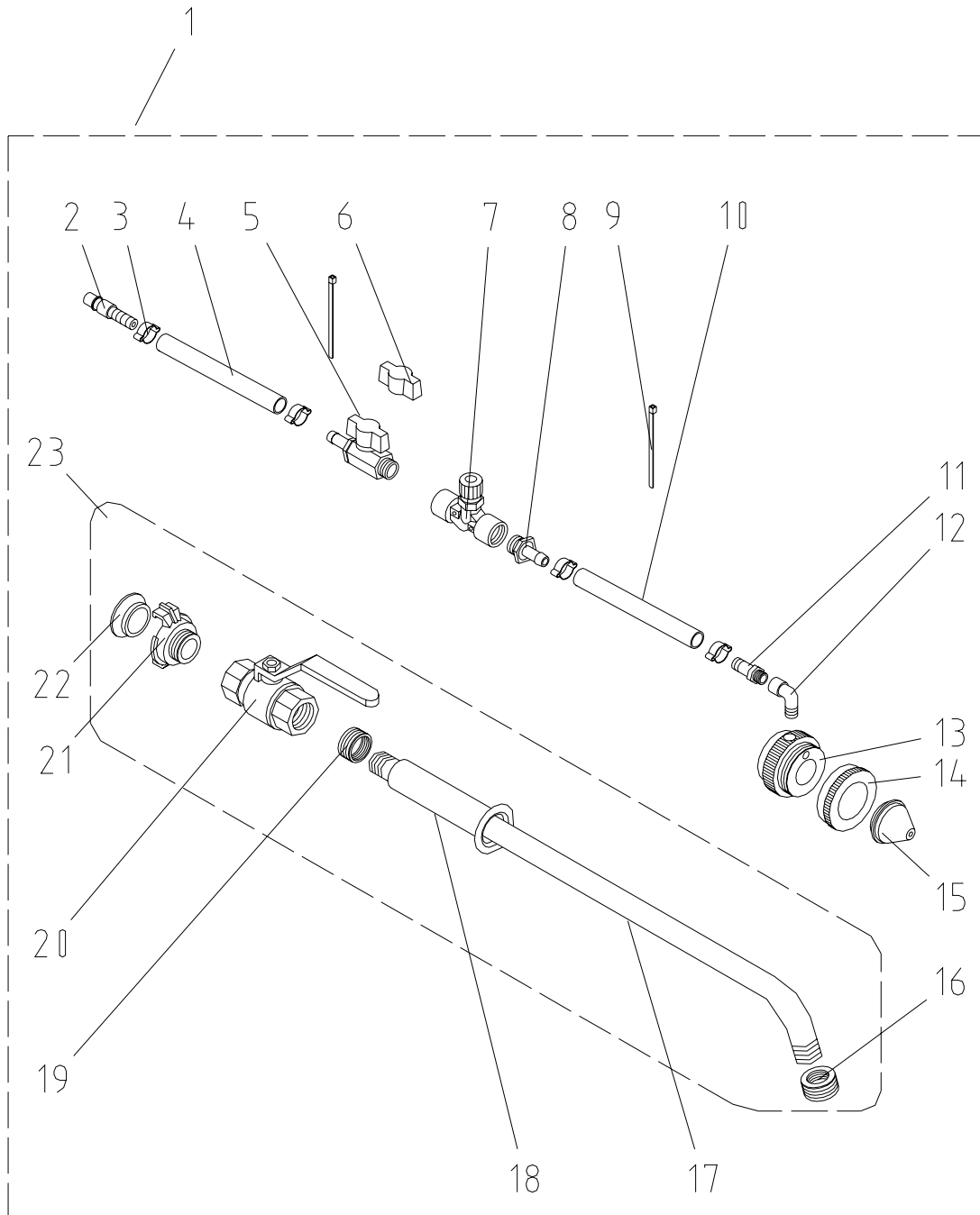
**Spare parts list for spraying gun with spraying head for concrete primer
(Beto contact)**

Pos.	Qty.	Item no.	Description
1	1	20201700	Gasket Geka-coupling
2	1	20201000	Geka coupling 3/8" ext. thread
3	1	20190200	Hanging bracket
4	1	20190310	Knob for air tap with screw
5	1	20190430	Hose screw joint 3/8" ext. thread socket 9 mm
6	1	20190320	Tap 3/8" ext. thread with socket 10 mm
7	1	20202610	Hose clip 15-18 packing unit=10ST
8	1	20190540	Hose section 9 mm x 780 mm
9	2	20031004	Cable binder TY 23 M
10	1	20202610	Hose clip 15-18 packing unit=10ST
11	1	20190440	Hose screw joint 1/8" ext. thread socket 9 mm
12	1	20203652	Curved section 1/8" int. thread ext. thread MS
13	1	20195902	Screwed joint for spraying gun 20 19 59 00
14	1	20195903	Connection nut for 20 19 59 00
15	1	00008593	Nozzle, stainless steel 4 mm for spray gun 20 19 59 00
16	1	20201700	Gasket Geka-coupling
17	1	20200910	Geka coupling 3/4" ext. thread
18	1	20156010	Sealing ring 24 X 18 X 2
19	1	20215171	Tap 3/4" int. thread-ext. thread DIN 2990 PN 20 with knob
20	1	20196701	Discharge pipe D20, offset
21	1	20196700	Spraying gun with spraying head for concrete primer (Beto contact)

Spare parts drawing for spraying gun 25 mm LW24 nozzle 12 mm straight

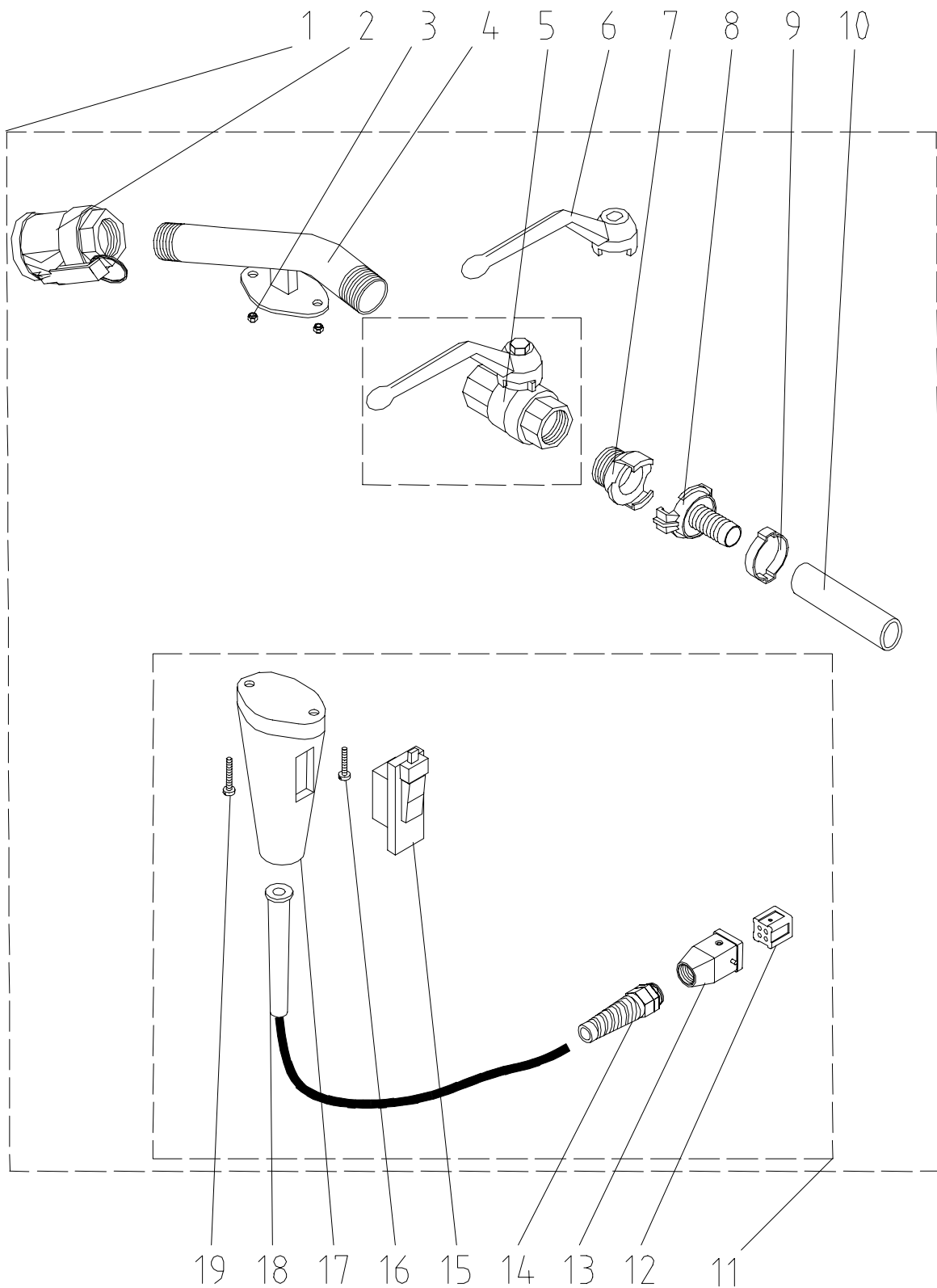
Spare parts list for spraying gun 25 mm LW24 nozzle 12 mm straight

Pos.	Qty.	Item no.	Description
1	1	20201700	Gasket Geka-coupling
2	1	20201000	Geka coupling 3/8" ext. thread
3	1	00037593	Coupling 25M part 1" int.thread alu 2 long handles
4	1	00046435	Tap 3/8" int. thread ext. thread with 2.4 mm drill hole
5	1	20190200	Hanging bracket
6	1	00046628	Double nipple hexagonal 1" ext. thread ALU
7	1	20190320	Tap 3/8" ext. thread with socket 10 mm
8	1	20190310	Knob for air tap with screw
9	1	20190430	Hose screw joint 3/8" ext. thread socket 9 mm
10	1	00020430	Tap 1" int. thread with long lever, alu
11	1	20190510	Hose section 9 mm x 310 mm
12	2	20202600	Hose clip 17-20 packing unit=10ST
13	1	20190100	Air nozzle tube 130 mm
14	1	20191902	Threaded pipe 1" x 100 (PA)
15	1	20190610	Spraying head straight
16	1	20190800	Spraying cap 12 mm packing unit = 10 pieces
17	1	20209980	Ring screw M10 x 19 DIN 580 galv.
18	1	00046396	Spraying gun, 25 mm, LW24, aluminium tap nozzle 12 mm straight

Spare parts drawing for spraying gun concrete primer w. spray head M20

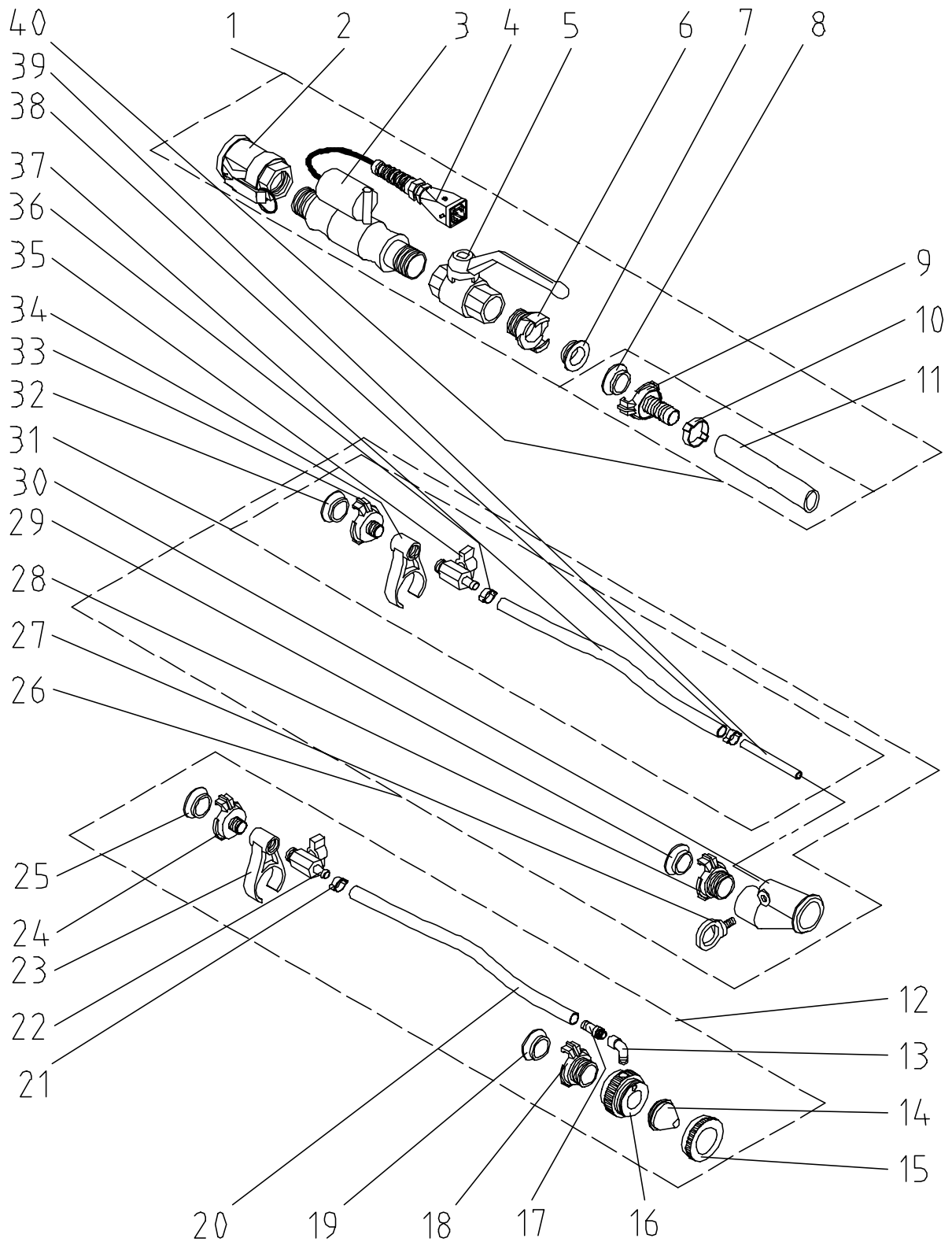
Spare parts list for spraying gun concrete primer w. spray head M20

Pos.	Qty.	Item no.	Description
1	1	00056674	Spraying gun concrete primer with sprayer
2	1	00010023	EWO-coupling male with socket 9 mm
3	4	20202610	Hose clip 15-18 packing unit=10ST
4	1	20190510	Hose section 9 mm x 310 mm
5	1	20190320	Tap 3/8" ext. thread with socket 10 mm
6	1	20190310	Knob for air tap with screw
7	1	00050844	Needle valve 3/8" fine adjustment sprayer
8	1	20190430	Hose screw joint 3/8" ext. thread socket 9mm
9	2	20031004	Cable binder TY 23 M
10	1	20190510	Hose section 9 mm x 310 mm
11	1	20190440	Hose screw joint 1/8" ext. thread socket 9mm
12	1	20203652	Curved section 1/8" int. thread ext. thread MS
13	1	20195902	Screwed joint for spraying gun 20 19 59 00
14	1	20195903	Connection nut for 20 19 59 00
15	1	00008593	Nozzle, stainless steel 4 mm for spray gun 20 19 59 00
16	1	00058705	Reducing ring 1" external thread 1/2" in
17	1	20196701	Discharge pipe D20, offset
18	1	00057812	Handle for spraying gun Beto contact modi
19	1	00058770	Reducing ring 3/4" external thread - M 2
20	1	20215170	Tap 3/4" int. thread DIN 2990
21	1	20200910	Geka coupling 3/4" ext. thread
22	1	20201700	Gasket Geka-coupling
23	1	00060853	End chute tube aluminium Mm 20 with ball

Spare parts drawing for Zargomat spraying gun

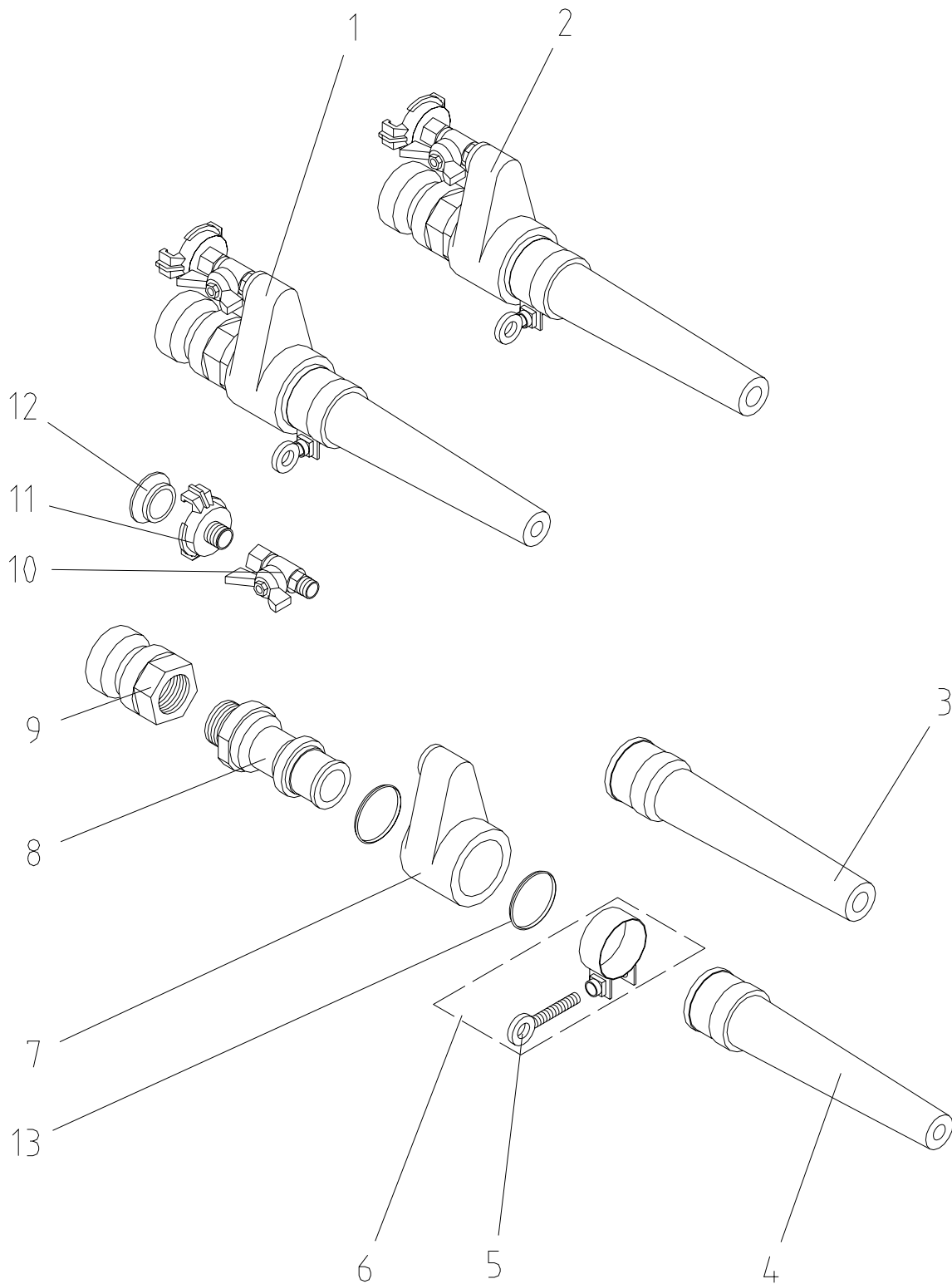
Spare parts list for Zargomat spraying gun

Pos.	Qty.	Item no.	Description
1	1	20195000	Zargomat spraying gun with cable 15 m
2	1	20199200	Coupling 25 female 1" int. thread, ID 24 with gasket
3	2	20206203	Safety nut M4 DIN 985 galv.
4	1	20089002	Fixing for Zargomat spraying gun RAL2004
5	1	20215153	Tap 1" int. thread DIN 2990 PN 40 long lever
6	1	20215154	Hand knob for tap (20 21 51 53)
7	1	20200800	Geka coupling 1" ext. thread
8	1	20201600	Geka coupling 3/4" socket
9	1	20202900	Hose clip 28-31 packing unit=10ST
10	1	20213603	Water-/air hose 3/4" x 150 mm
11	1	20456950	Remote control Zargomat spraying gun with cable 15 m
12	1	20428606	Male insert 4 pins HAN 3A
13	1	20428608	Socket housing 4 and 5 pins, straight
14	1	00001550	Connector skintop with nut PG 11 kink protection
15	1	20262400	Switch
16	1	20206408	Cheese-head screw M4 x 25 DIN 84
17	1	20240600	Handle for Zargomat spraying gun
18	1	20483001	Rubber sleeve MIXER 1600 W
19	1	20206409	Cheese-head screw M4 x 30 DIN 84

Spare parts drawing for spraying gun for bounding mortar with pressure switch

Spare parts list for spraying gun for bounding mortar with pressure switch

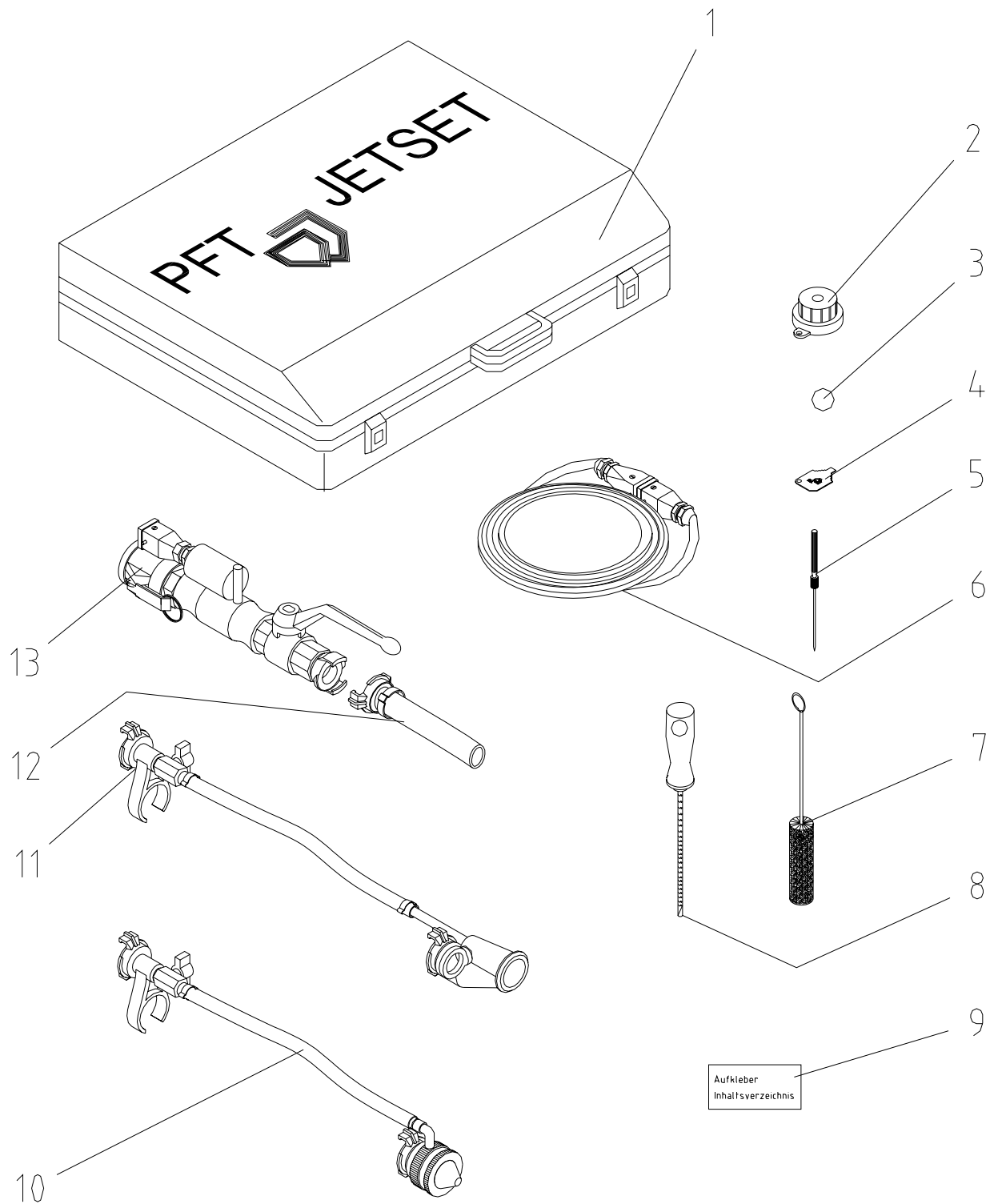
Pos.	Qty.	Item no.	Description
1	1	00010468	Spraying gun for bounding mortar with pressure switch
2	1	20199200	Coupling 25 female 1" int. thread, ID 24 with gasket
3	1	00012606	Squeeze valve for spraying gun for bounding mortar
4	1	20423820	No longer available, no replacement
5	1	20215151	Tap 1" int. thread DIN 2990 PN 40
6	1	20200800	Geka coupling 1" ext. thread
7	1	20201700	Gasket Geka-coupling
8	1	20201700	Gasket Geka-coupling
9	1	20201600	Geka coupling 3/4" socket
10	1	20202901	Hose clip 28-31 (P)
11	1	20213603	Water-/air hose 3/4" x 150 mm
12	1	00019787	Spraying head for finishing coat for spraying gun with pressure switch
13	1	20203652	Curved section 1/8" int. thread ext. thread MS
14	1	20191300	Nozzle, plastic 10 mm for spray gun 20 19 59 00
15	1	20195903	Connection nut for 20 19 59 00
16	1	20195902	Screwed joint for spraying gun 20 19 59 00
17	1	20190440	Hose screw joint 1/8" ext. thread socket 9 mm
18	1	20200800	Geka coupling 1" ext. thread
19	1	20201700	Gasket Geka-coupling
20	1	20190510	Hose section 9 mm x 310 mm
21	1	20202611	Hose clip 15-18 (P)
22	1	20190321	Tap 3/8" ext. thread with socket 10 mm (P)
23	1	20190200	Hanging bracket
24	1	20201000	Geka coupling 3/8" ext. thread
25	1	20201700	Gasket Geka-coupling
26	1	00019788	Spraying head for plastering for spraying gun with pressure switch
27	1	20209980	Ring screw M10 x 19 DIN 580 galv.
28	1	20200800	Geka coupling 1" ext. thread
29	1	20201700	Gasket Geka-coupling
30	1	20190610	Spraying head straight
31	1	20191800	Air connection for spray gun
32	1	20201700	Gasket Geka-coupling
33	1	20201000	Geka coupling 3/8" ext. thread
34	1	20190200	Hanging bracket
35	1	20190321	Tap 3/8" ext. thread with socket 10 mm (P)
36	1	20202611	Hose clip 15-18 (P)
37	1	20190510	Hose section 9 mm x 310 mm
38	1	20202611	Hose clip 15-18 (P)
39	1	20190100	Air nozzle tube 130 mm
40	1	00020389	Attachment for glue gun with automatic switch-off device
	1	00019789	Spraying gun for finishing coat with pressure switch
	1	00019790	Spraying gun for plastering with pressure switch
		00020388	JETSET complete

Spare parts drawing for spraying gun for concrete 35 mm

Spare parts list for spraying gun for concrete 35 mm

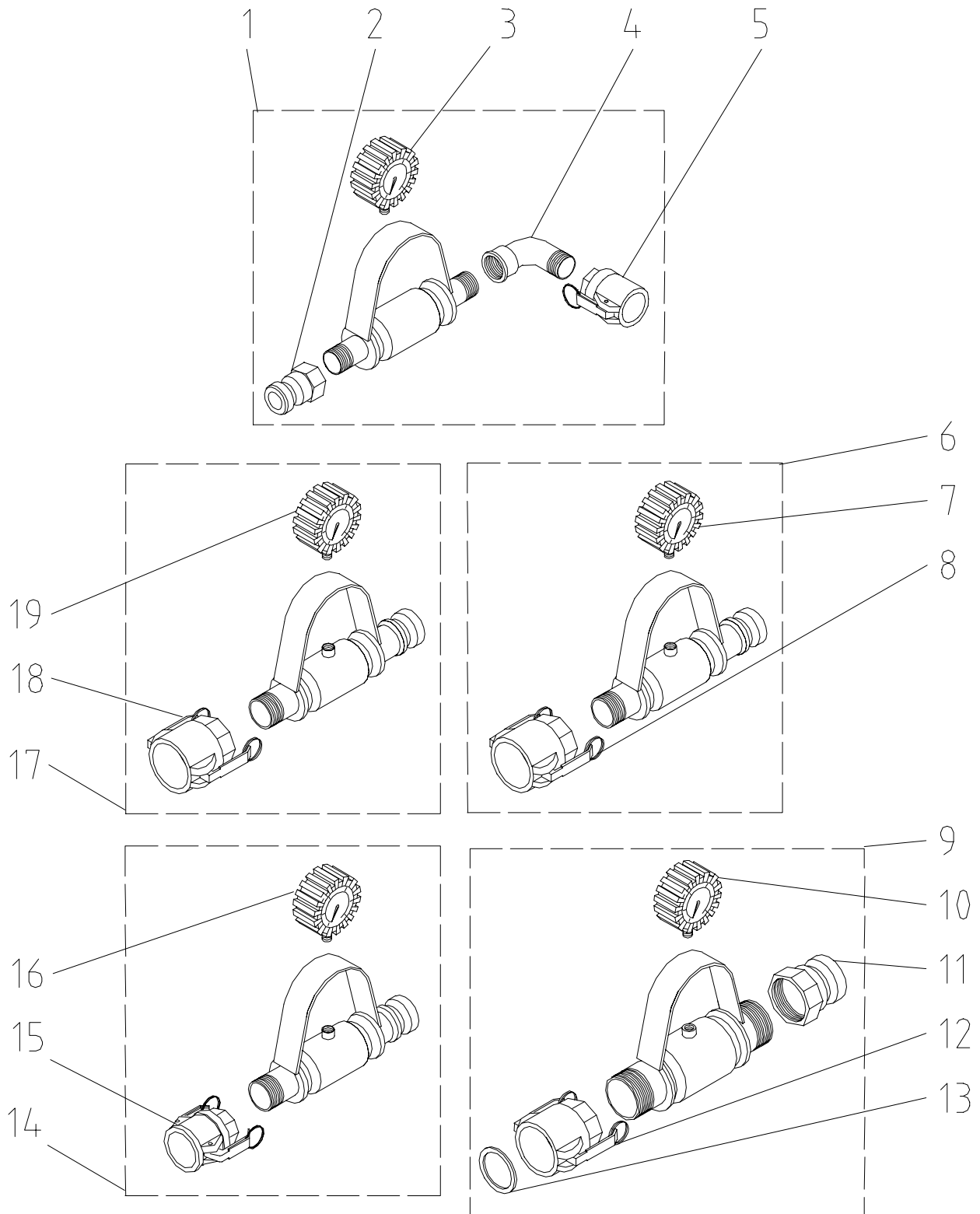
Pos.	Qty.	Item no.	Description
1	1	20196300	Spraying gun for concrete 35 mm with nozzle 12mm cpl.
2	1	20196400	Spraying gun for concrete 35 mm with nozzle 15mm cpl.
3	1	20196410	Nozzle tube 15 mm for 20 19 63 00
4	1	20196310	Nozzle tube 12 mm for 20 19 63 00
5	1		Ring bolt M8 x 40 DIN 580 zinc-pl.
6	1	20196329	NO LONGER AVAILABLE, NO REPLACEMENT
7	1	20196323	Mixer nozzle holder NW25
8	1	20196320	Mixer nozzle 1" NW25
9	1	20200740	Coupling 35 male 1" int. thread
10	1	20196322	Tap 3/8" int. thread ext. thread
11	1	20201000	Geka coupling 3/8" ext. thread
12	1	20201700	Gasket Geka-coupling
13	2	20196324	O-ring 43 x 3 DIN 3770-NBR 70

Spare parts drawing for JETSET case



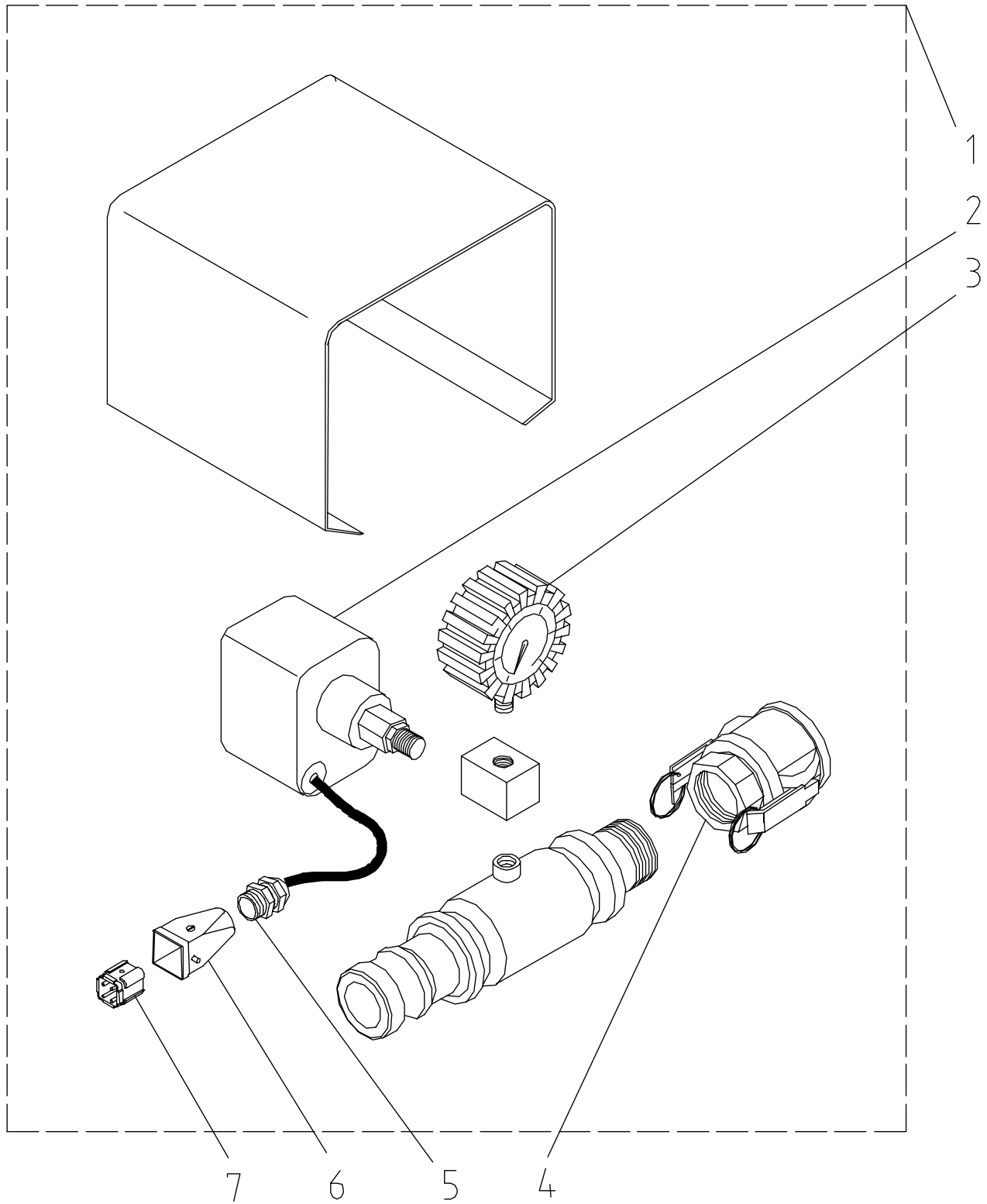
Spare parts list for JETSET case

Pos.	Qty.	Item no.	Description
		00020388	JETSET complete
1	1	00020998	Plastic case with inserts black JETSET
2	1	20190800	Spraying cap 12 mm packing unit = 10 pieces
3	1	20210500	Sponge ball 30 mm diam.
4	1	20190223	Key for air tube setting of spraying gun
5	1	20223100	Round file 5 mm
6	1	00021764	Remote control 35 cm cable JETSET cpl.
7	1	00021218	Nylon socket brush 0.25 wire 1.6 mm with eye
8	1	00021219	Reamer with tool holder JETSET
9	1	00037590	Sticker JETSET content
10	1	00019787	Spraying head for finishing coat for spraying gun with pressure switch
11	1	00019788	Spraying head for plastering for spraying gun with pressure switch
12	1	00020389	Attachment for glue gun with automatic switch-off device
13	1	00010468	Spraying gun for bounding mortar with pressure switch
			Individual parts for items 10-13 see D 0 70 50 720

Spare parts drawing for mortar pressure gauge

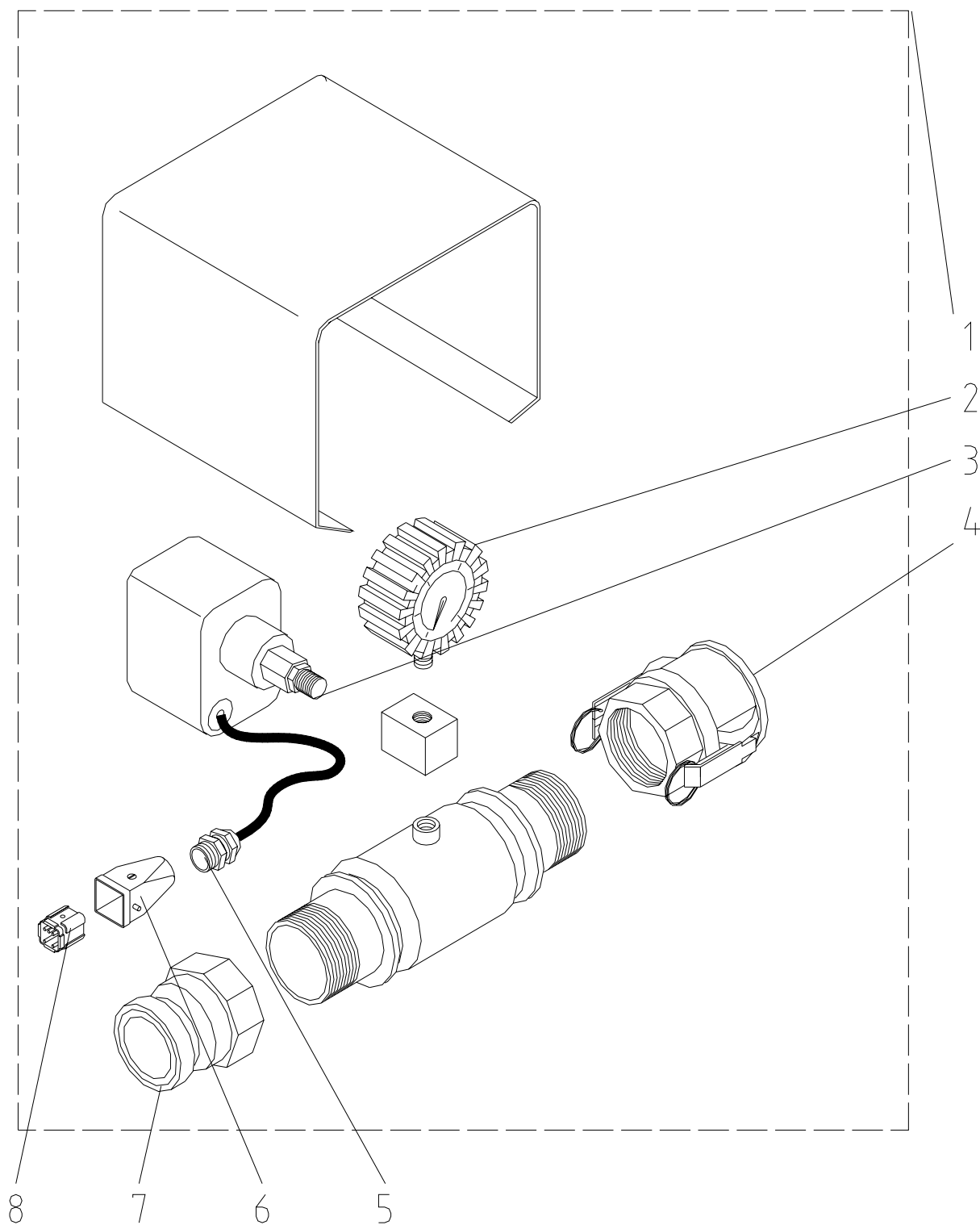
Spare parts list for mortar pressure gauge

Pos.	Qty.	Item no.	Description
1	1	20217010	Mortar pressure gauge 25 mm ID 24 with bail 1"90°
2	1	20199300	Coupling 25 male 1" int. thread ID 24
3	1	20216110	Gauge 0-100 bar 1/4" at bottom, D = 63 mm glycerine varnished
4	1	20203506	Bend 1"0 90 ° int. thread-ext. thread no. 1 galv.
5	1	20199200	Coupling 25 female 1" int. thread, ID 24 with gasket
6	1	20217000	Mortar pressure gauge 25 mm ID 19
7	1	20216110	Gauge 0-100 bar 1/4" at bottom, D = 63 mm glycerine varnished
8	1	20200200	Coupling 25 female 1" int. thread, ID 19 with gasket
9	1	20217300	Mortar pressure gauge 50mm
10	1	20216110	Gauge 0-100 bar 1/4" at bottom, D = 63 mm glycerine varnished
11	1	20200781	Coupling 50 male 2" int. thread
12	1	20200780	Coupling 50 female 2" int. thread with gasket
13	1	20200713	Gasket 50 female coupling
14	1	20217200	Mortar pressure gauge 35 mm
	1	00039775	NO LONGER AVAILABLE, REPLACEMENT 00080858
	1	00020316	NO LONGER AVAILABLE, REPLACEMENT 00080858
15	1	20200730	Coupling 35 female 1" int. thread with gasket
16	1	20216110	Gauge 0-100 bar 1/4" at bottom, D = 63mm glycerine varnished
17	1	20217001	Mortar pressure gauge 25 mm ID 24
	1	00040769	Mortar pressure gauge 25 mm LW 24 RAL9002
	1	00038895	Mortar pressure gauge 25 mm LW 24 RAL9010
18	1	20199200	Coupling 25 female 1" int. thread, ID 24 with gasket
19	1	20216110	Gauge 0-100 bar 1/4" at bottom, D = 63 mm glycerine varnished

Spare parts drawing for mortar pressure gauge 35 mm

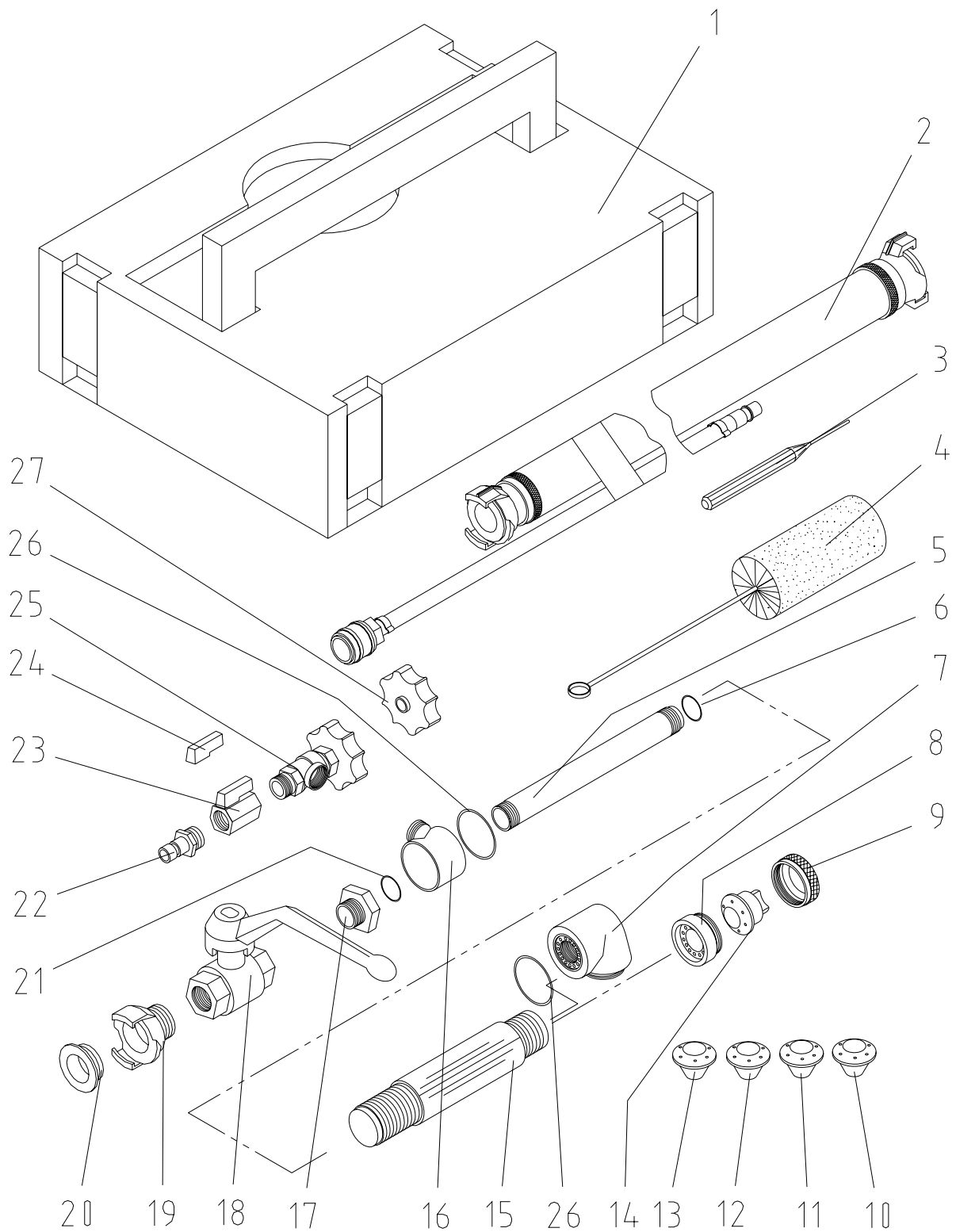
Spare parts list for mortar pressure gauge 35 mm

Pos.	Qty.	Item no.	Description
1	1	00001500	Mortar pressure gauge with additional switch 35 mm
2	1	00001554	Pressure switch type FF4-32 0.8-30 bar
3	1	20216110	Gauge 0-100 bar 1/4" at bottom, D = 63 mm glycerine varnished
4	1	20200790	Coupling 35 female 1 1/4" int. thread with gasket
5	1	20430905	NO LONGER AVAILABLE REPLACEMENT 20431400 20430500
6	1	20428608	Socket housing 4 and 5 pins, straight
7	1	20428606	Male insert 4 pins HAN 3A

Spare parts drawing for mortar pressure gauge 50 mm

Spare parts list for mortar pressure gauge 50 mm

Pos.	Qty.	Item no.	Description
1	1	20217310	Mortar pressure gauge with additional switch 50 mm with 5 pin plug
2	1	20216110	Gauge 0-100 bar 1/4" at bottom, D = 63 mm glycerine varnished
3	1	00001554	Pressure switch type FF4-32 0.8-30 bar
4	1	20200780	Coupling 50 female 2" int. thread with gasket
5	1	20430905	NO LONGER AVAILABLE REPLACEMENT 20431400 20430500
6	1	20428608	Socket housing 4 and 5 pins, straight
7	1	20200781	Coupling 50 male 2" int. thread
8	1	20428602	Male insert 5 pins HA 4

Spare parts drawing for spraying gun SWING in case

Spare parts list for spraying gun SWING in case

		00008479	SWING spray set in case
1	1	00043983	SWING spray set case
2	1	00008480	Spraying tube prolongation SWING 82 cm
3	1	00043951	Item is ordered directly via SRM
4	1	00043986	Nylon/wire socket brush spray set SWING in case
5	1	00008819	Tube for spraying gun SWING
6	1		O-ring 17 x 1.8
7	1	00008481	Cranked extension for spraying gun SWING
8	1	00008817	Ring nut for spraying gun SWING
9	1	00008816	Connection nut spraying gun SWING
10	1	00008594	Nozzle, stainless steel 10.5 mm SWING with air bore 2 mm
		00008812	Nozzle, stainless steel 10.5 mm SWING with air bore 1 mm
11	1	00008595	Nozzle, stainless steel 8.5 mm SWING with air bore 2 mm
		00008813	Nozzle, stainless steel 8.5 mm SWING with air bore 1 mm
12	1	00008596	Nozzle, stainless steel 6.5 mm SWING with air bore 2 mm
		00008814	Nozzle, stainless steel 6.5 mm SWING with air bore 1 mm
13	1	00008597	Nozzle, stainless steel 4.5 mm SWING with air bore 2 mm
		00008815	Nozzle, stainless steel 4.5 mm SWING with air bore 1 mm
14	1	00008598	Nozzle, stainless steel with slot SWING
15	1	00008818	Air tube for spraying gun SWING
16	1	00008820	Holder angle valve spraying gun SWING
17	1	00008821	Reducing nipple 3/4" ext. thread 1/2" int. thread stainless steel
18	1	00057959	Ball cock 3/4" Int. Thread DN20 lever AL (Spraying gun Swing)
19	1	20200910	Geka coupling 3/4" ext. thread
20	1	20201700	Gasket Geka-coupling
21	1		O-ring 20 x 1.8
22	1	20202101	EWO coupling male 3/8" ext. thread
23	1	00057960	Ball cock 3/8" Int. Thread lever one side
24	1	00039365	Knob f. air tap w. screw one-sided
25	1	00008822	Regulating valve for spray gun SWING
26	2		O-ring 30 x 1.8
27	1	00008823	Handwheel for valve of spraying gun SWING
	1	00 01 06 30	Gasket set spraying pipe SWING (consists of items 6, 20, 21, 26)