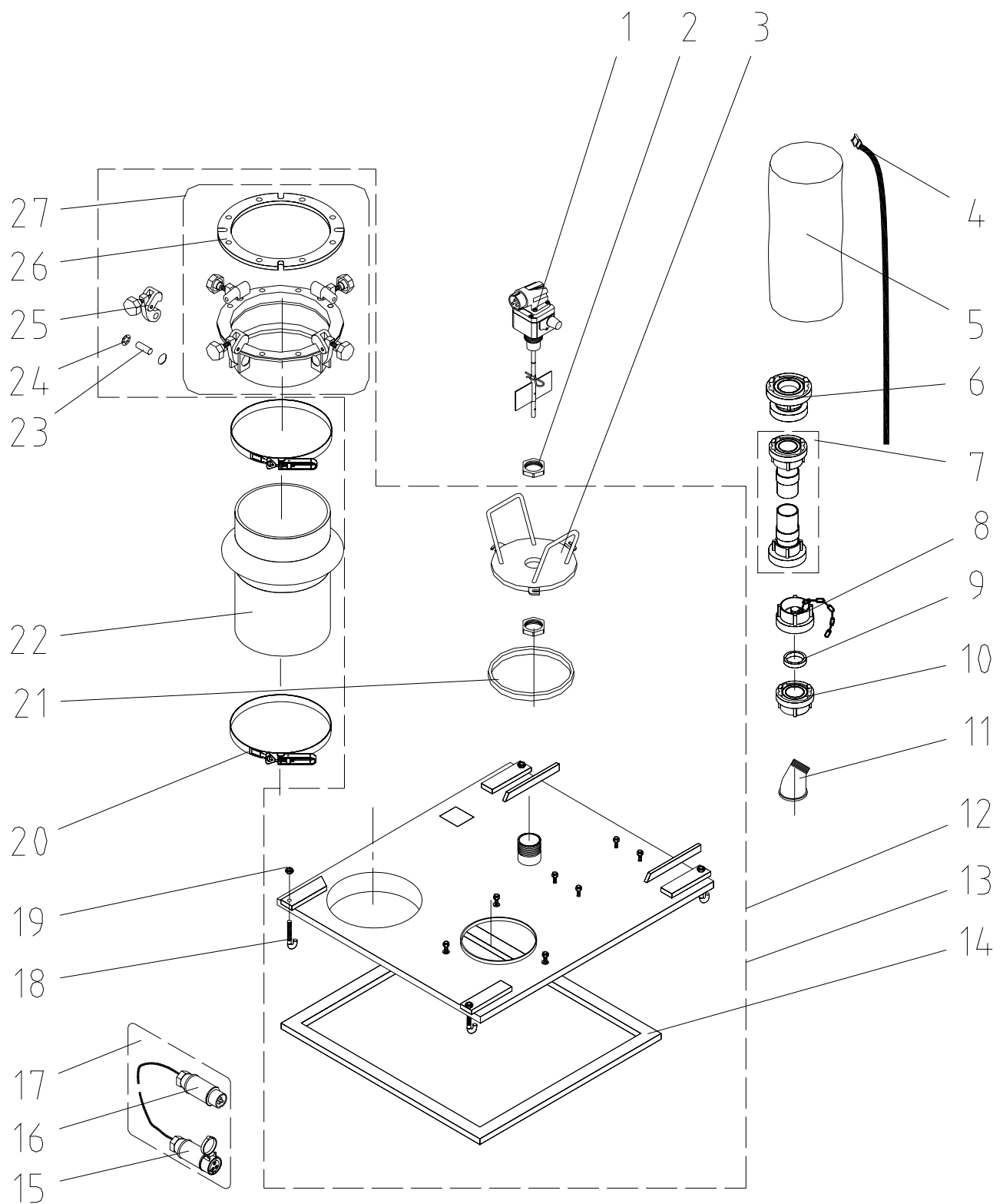


Contents

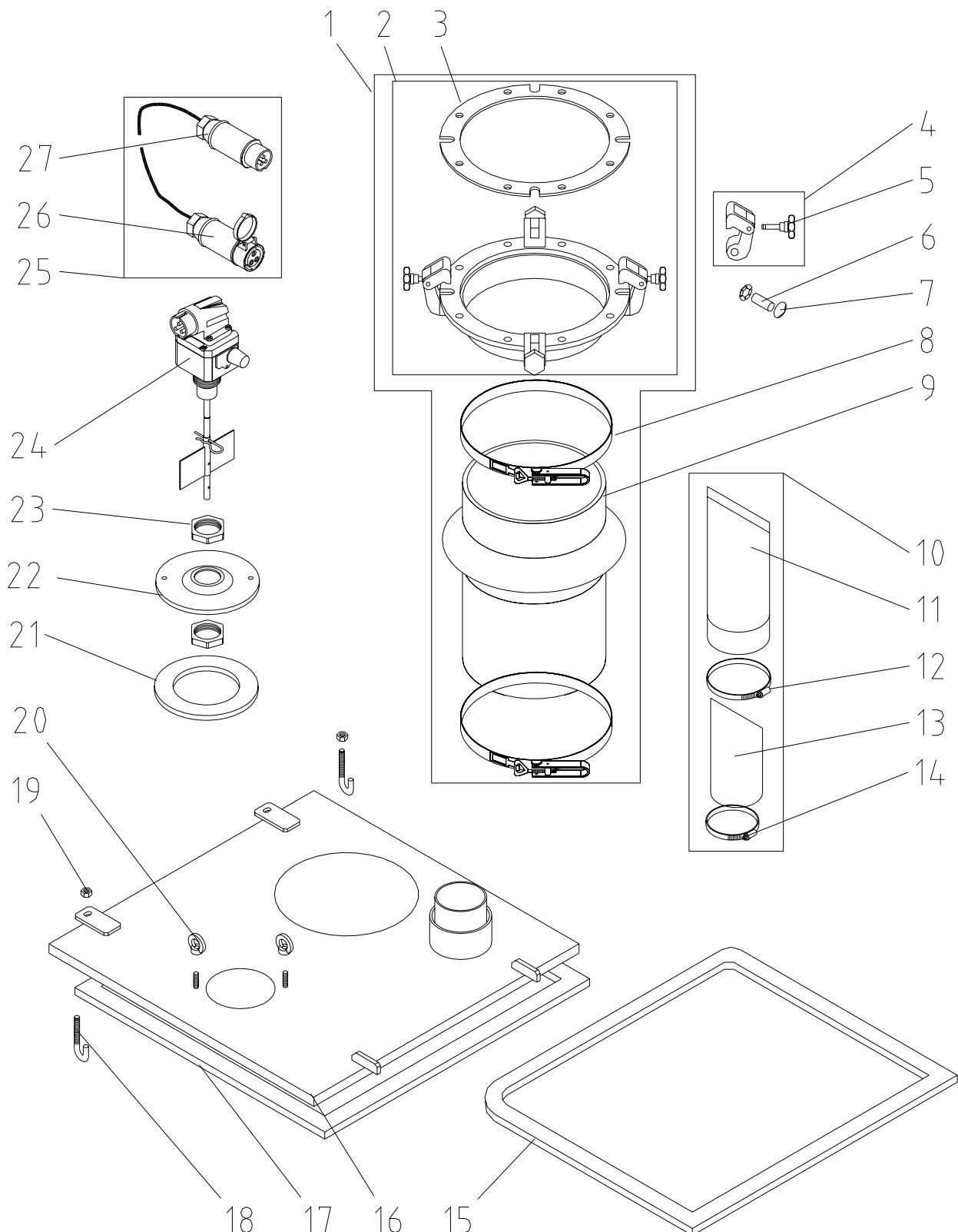
Contents	1
Spare parts drawing for delivery hood	2
Spare parts list for delivery hood	3
Spare parts drawing for delivery hood G 5	4
Spare parts list for delivery hood G 5	5
Spare parts drawing for control box, delivery hood	6
Spare parts list for control box, delivery hood	7
Spare parts drawing for injection hood E 1, new	8
Spare parts list for injection hood E 1, new	9
Spare parts drawing for injection hood E 1, old	10
Spare parts list for injection hood E 1, old	11
Spare parts drawing for injection hood G 5	12
Spare parts list for injection hood G 5	13
Spare parts drawing for injection hood G 5, old	14
Spare parts list for injection hood G 5, old	15
Spare parts drawing for injection hood Monojet	16
Spare parts list for injection hood Monojet	17
Spare parts drawing for injection hood E 5	18
Spare parts list for injection hood E 5	19
Spare parts drawing for bag squeezer	20
Spare parts list for bag squeezer	21

Spare parts drawing for delivery hood



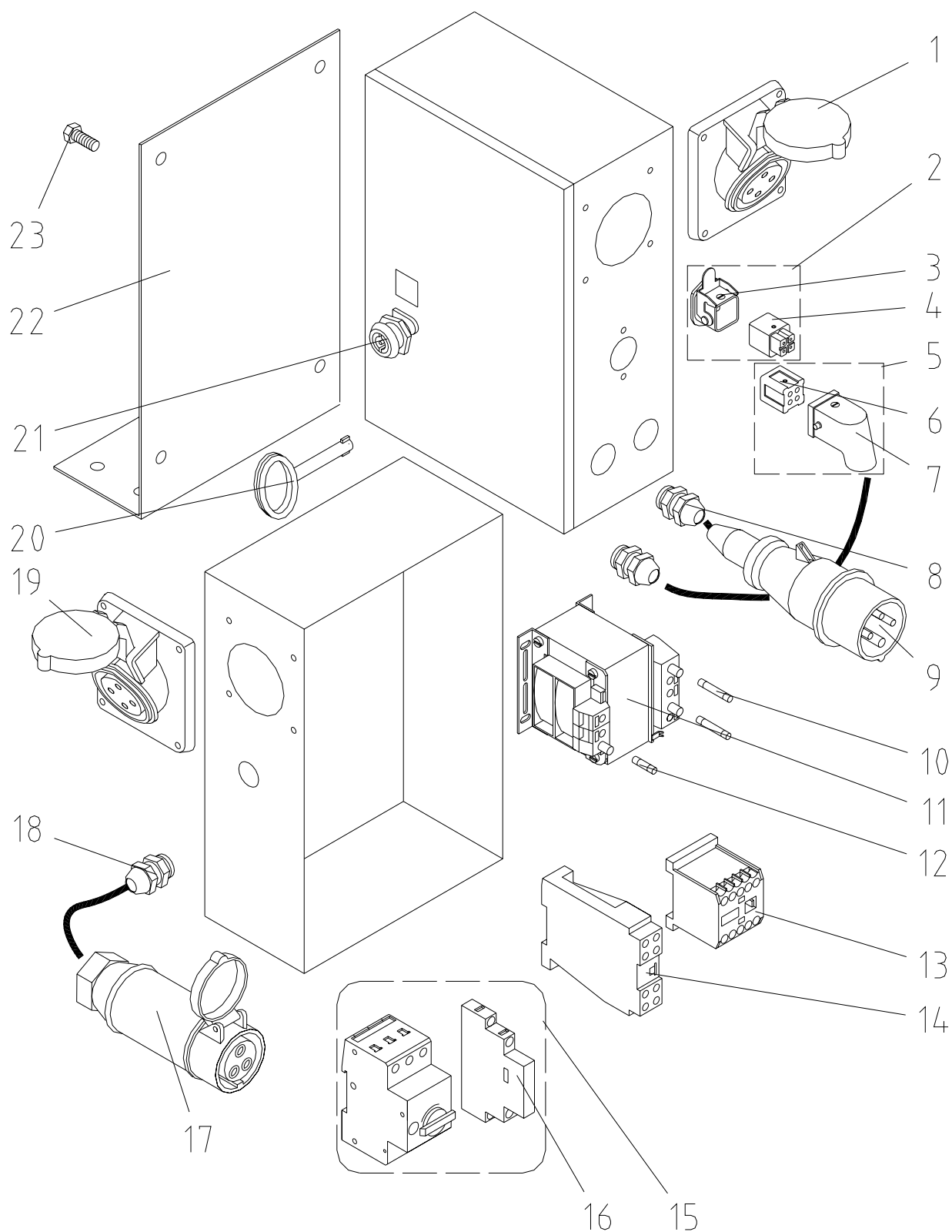
Spare parts list for delivery hood

Item	Qty	Item no.	Description
	1	00 01 99 14	Delivery hood with control box RAL9010
	1	20 60 05 00	Delivery hood with control box for empty run protection cpl.
	1	20 60 05 11	Delivery hood without control box RAL9010
	1	20 60 05 10	Delivery hood without control box for empty run protection cpl.
1	1	00 01 00 75	Level indicator 42 V type SG12 plastic
2	2	20 60 68 02	Counternut 1 1/2" no. 310 galv.
3	1	20 60 25 04	Attachment lid for filling level indicator type SG06 RAL9010
4	1	20 60 05 54	Tightening strap D=240 mm
5	1	20 60 43 00	Dust filter bag 50 cm
6	1	20 65 73 00	Reduction coupling NE-Norm-C DIN
7	1	20 60 06 01	Hose 46/58, 2.5 m for ventilation hose with coupling C DIN
8	1	20 65 71 00	Dummy cover with chain for coupling type C
9	1	20 65 82 00	Gasket coupling C-DIN
10	1	20 65 61 00	Coupling C DIN 2" int. thread
11	1	20 20 38 50	Curved section 2" int. thread-ext. thread 45 ° no. 121 galv.
12	1	20 60 05 32	Body for delivery hood RAL9010
13	1	00 05 43 95	Metal base for delivery hood G 4 centric connection
14	1	20 60 05 70	Gasket for delivery hood body 2400mm long
15	1	20 42 94 00	Coupling CEE 3 X 16 A 12h white no. 715
16	1	20 42 82 00	Plug CEE 3 x 16 A 12h white no. 663
17	1	20 42 38 50	Control cable 5m with plug and coupling CEE 3 x 16 A 12h white
18	4	20 60 23 10	Screw-in hook for cocking lever L=80 mm
19	4	20 20 63 99	Hex. nut M10 DIN 934 galv.
20	2	20 60 05 52	Steel strap with strip locking 18 x 840
21	1	20 60 05 71	Gasket snap lock 20 x 10 x 600
22	1	20 60 05 51	Delivery bellows 300 mm length
23	4	20 70 58 02	Bolt A16 H11 x 50 St galv. 1,5 x 30°
24	8	20 20 86 04	Fastener with cap 16s x N 2 7
25	4	20 56 63 70	Aluminium snap lock
26	1	20 70 63 00	Rubber gasket D 330 x 260 x 4
27	1	20 60 05 53	Flange for delivery bellows with gasket

Spare parts drawing for delivery hood G 5

Spare parts list for delivery hood G 5

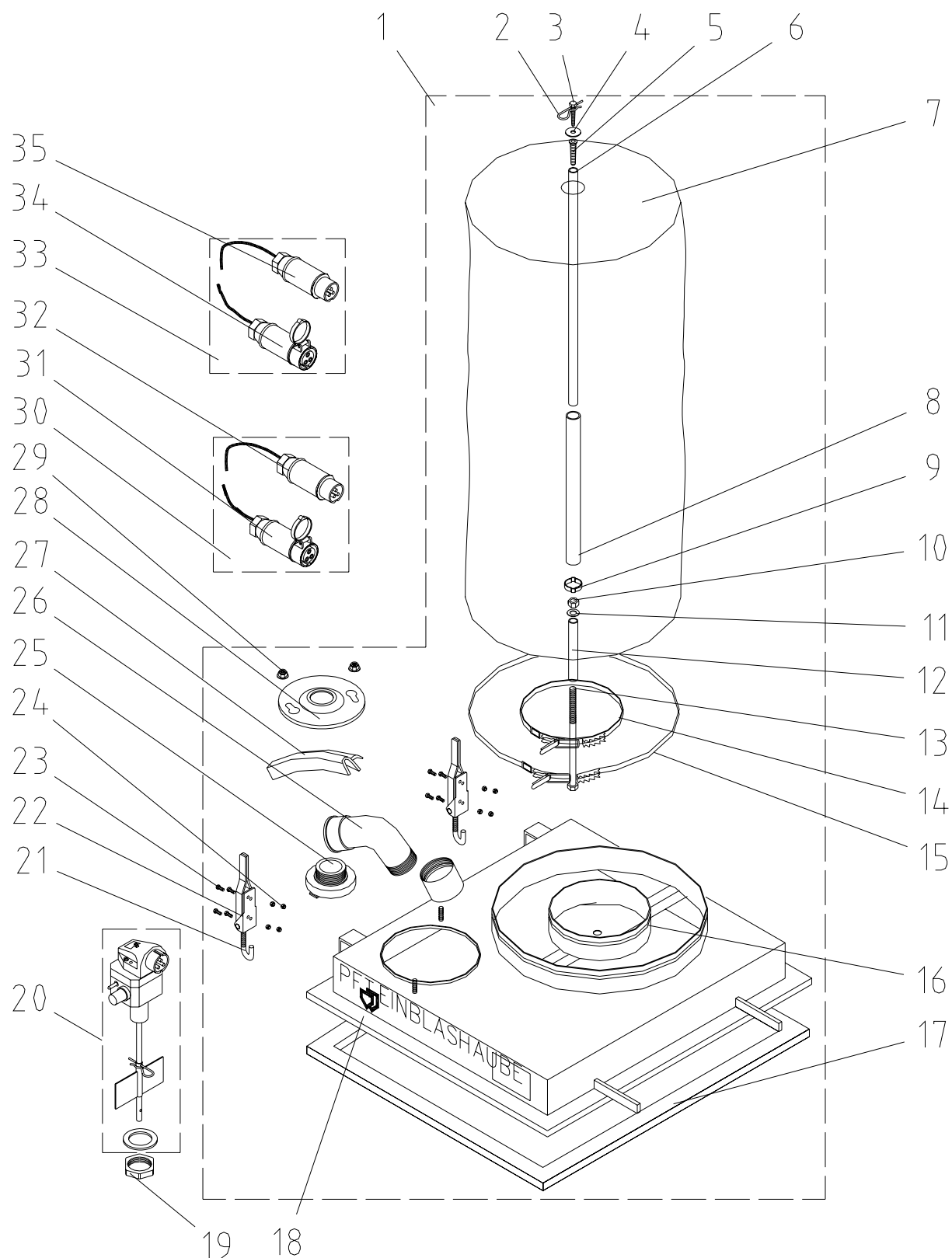
Item	Qty	Item no.	Description
1	1	20 60 05 50	Connection parts cpl. (delivery bellow, flange, clamp)
2	1	20 60 05 53	Flange for delivery bellows with gasket
3	1	20 70 63 00	Rubber gasket D 330 x 260 x 4
4	4	20 56 63 70	Aluminium snap lock
5	4	20 56 63 71	Knurled screw for aluminium locking device
6	4	20 70 58 00	No longer available, replacement 20705802
7	8	20 20 86 04	Fastener with cap 16s x N 2 7
8	2	20 60 05 52	Steel strap with strip locking 18 x 840
9	1	20 60 05 51	Delivery bellows 300mm length
10	1	00 00 86 40	Rain cover, filter and clamp for CMP and conveying hood
11	1	00 00 24 33	Rain cover for CMP 120
12	1	00 00 86 41	Hose clip 100-120 with screw
13	1	00 00 80 39	Dust filter hose 92 X 200
14	1	00 00 86 42	Hose clip 80-100 with screw
15	1	00 00 96 38	Gasket rubber 40 x 20 x 2500
16	1	00 00 95 58	Body for delivery hood G 5 RAL9002
17	1	00 07 17 40	Gasket for delivery hood G 5 rectangular 642 x 642 x 32 x 20
18	2	20 60 23 10	Screw-in hook for cocking lever L=80 mm
19	2	20 20 63 99	Hex. nut M10 DIN 934 galv.
20	2	20 20 79 50	Ring nut M8 DIN 582 galv.
21	1	00 04 72 40	Gasket cover for level indicator
22	1	00 00 82 43	Cover for level indicator RAL9002
23	2	20 60 68 02	Counternut 1 1/2" no. 310 galv.
24	1	00 01 00 75	Level indicator 42 V type SG12 plastic
25	1	20 42 38 50	Control cable 5m with plug and coupling CEE 3 x 16 A 12h white
26	1	20 42 94 00	Coupling CEE 3 X 16 A 12h white no. 715
27	1	20 42 82 00	Plug CEE 3 x 16 A 12h white no. 663

Spare parts drawing for control box, delivery hood

Spare parts list for control box, delivery hood

Item	Qty	Item no.	Description
1	1	20 42 66 00	Panel mounted socket CEE 4 x 16A 6h red no.1467, flange 92 x 100
2	1	20 42 98 00	Coupling 4-pin HAN 3A with female insert
3	1	20 42 86 04	Socket housing 4/5-pin, HAN 3A/HA 4
4	1	20 42 86 07	Female insert 4 pin, HAN 3A
5	1	20 42 86 00	Plug HAN 3A with male insert 4 pins angled
6	1	20 42 86 06	Male insert 4 pins HAN 3A
7	1	20 42 86 05	Socket housing 4 and 5 pins, angled
8	2	20 43 05 00	Connector skintop PG 11
9	1	20 42 79 00	Plug CEE 4 x 16 A 6h red no. 252
10	2	20 41 90 70	Fuse 5 X 30, 0.5 A
11	1	00 02 21 38	Transformer 400 V-42 V 70 VA
12	1	20 41 90 21	Fuse 5 x 20, 2.0 A
13	1	20 44 66 10	Contacto DIL EM 10 42 V 50 Hz/48 V 60 Hz
14	1	20 45 27 00	Time lag relay 42 V, 1.5-30 sec.
15	1	00 00 93 70	Motor protection switch 1.6-2.5A PKZM 0-2.5
16	1	00 02 14 01	Auxiliary contact NHI-11-PKZO
17	1	20 42 94 00	Coupling CEE 3 X 16 A 12h white no. 715
18	1	20 43 05 00	Connector skintop PG 11
19	1	20 42 66 00	Panel mounted socket CEE 4 x 16A 6h red no.1467, flange 92 x 100
20	1	20 44 45 00	Key for control box
21	1	00 03 62 49	Lock for control box (double bit)
22	1	20 60 05 20	Support for control box delivery hood
23	4	20 20 61 00	Hex. screw M8 x 20 DIN 933 galv.

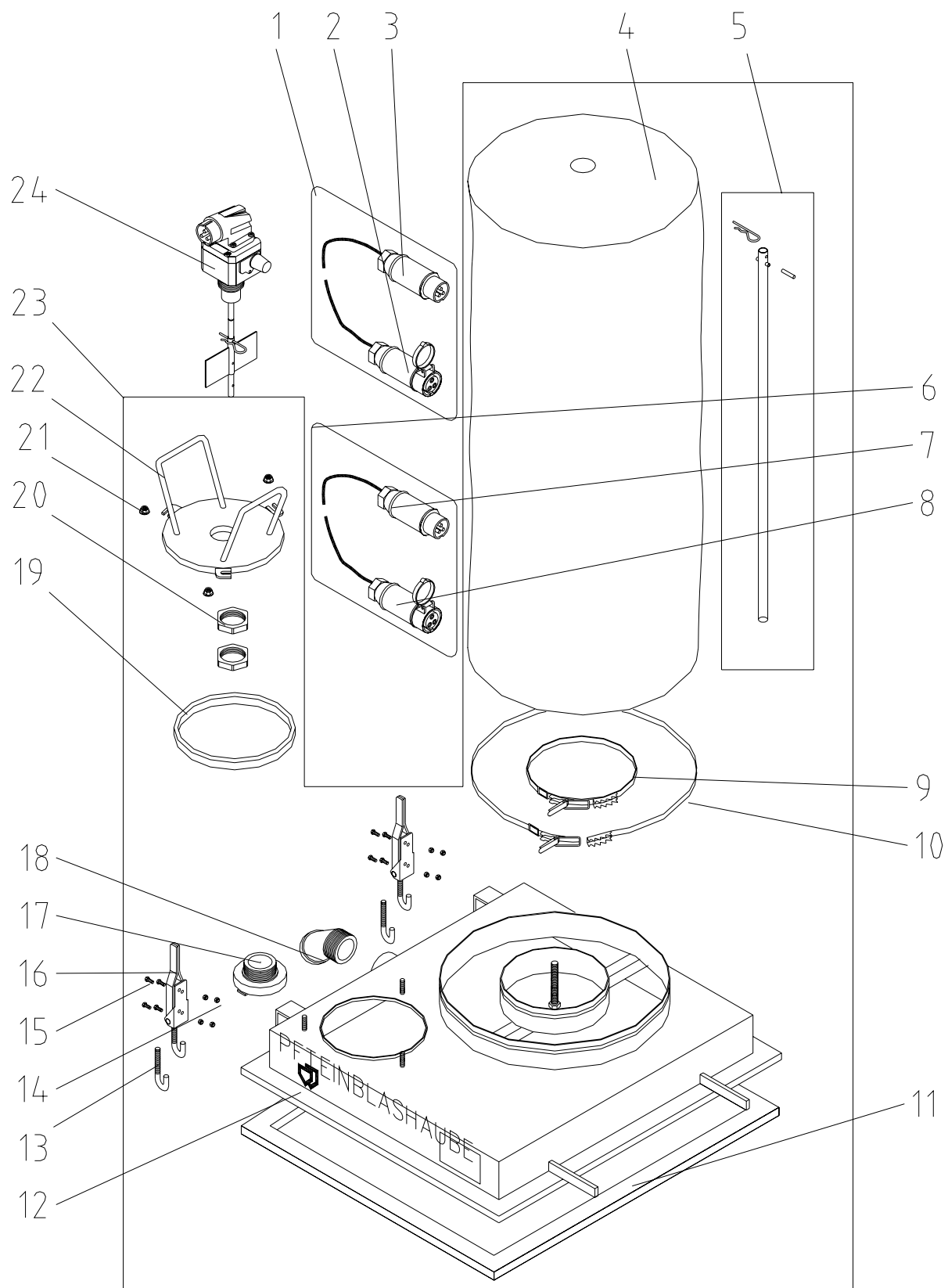
Spare parts drawing for injection hood E 1, new



Spare parts list for injection hood E 1, new

Item	Qty	Item no.	Description
1	1	20 60 02 14	Body of injection hood cpl., for injection hood E 1 with round monofilter
2	1	20 60 68 05	Spring plug 3 mm
3	1	00 02 33 82	Hex screw 8 x 50 DIN 571 zinc-pl.
4	1	20 20 93 20	Washer 8
5	1	00 06 97 43	Dowel plug 4 AS-K 12/76
6	1	00 04 46 46	Monofilter filter column, round top (deep) 950 lg.
7	1	20 60 41 02	Filter sack D 420 x 1100 for E 1
8	1	00 04 46 51	Water/air hose 3/4" x 350 mm
9	1	20 20 29 01	Hose clip 28-31 (P)
10	1	20 20 69 00	Hex nut M12 DIN 934 zinc-plated
11	1	20 20 90 00	U disc B 13 DIN 125 zinc-plated
12	1	00 04 46 47	Steel pipe 18 x 2.5 x 140
13	1	00 04 27 74	Hex screw M12 x 240 DIN 931 zinc-pl. 80 mm
14	1	20 60 45 00	Clip with clasp 10 x 660
15	1	20 70 73 01	Quick adjusting clasp, jaw width D 420-430 mm
16	1	00 04 92 11	Filter sack holder, injection hood G 5, deep model, RAL 2004
17	1	20 60 05 70	Delivery hood sealing
18	1	00 06 04 40	Body of injection hood, injection hood G 4 RAL 2004
19	1	20 60 68 02	Nut 1 1/2" no. 310 zinc-plated
20	1	00 01 00 75	Level indicator 42 V type SG12 plastic
21	2	20 60 23 10	Hook for tensioning lever
22	2	20 60 23 00	Tensioning lever with hook
23	8	20 20 70 96	Screw M5 x 12 DIN 965 zinc-pl.
24	8	20 20 66 02	Nut M5 DIN 985 zinc-pl.
25	1	20 65 61 01	Coupling C DIN 2" AG
26	1	00 00 84 07	Curved section 2" 90° IG-AG no. 1a zinc-pl.
27	1	00 02 34 95	Gasket profile EPDM 67 /1011-10
28	1	00 06 00 08	Level sensor cover E 1, new RAL 2004
29	2	00 06 01 30	Flange nut M8, zinc-plated, self locking
30	1	20 42 38 00	Control cable 25 m with CEE plug and coupling 3 x 16 A, 12 h, white
31	1	20 42 94 00	CEE coupling 3 x 16 A, 12 h, white, no. 715
32	1	20 42 82 00	CEE plug 3 x 16 A, 12 h, white, no. 663
33	1	20 42 37 00	Control cable 50 m with CEE plug and coupling 3 x 16 A, 12 h, white
34	1	20 42 94 00	CEE coupling 3 x 16 A, 12 h, white, no. 715
35	1	20 42 82 00	CEE plug 3 x 16 A, 12 h, white, no. 663

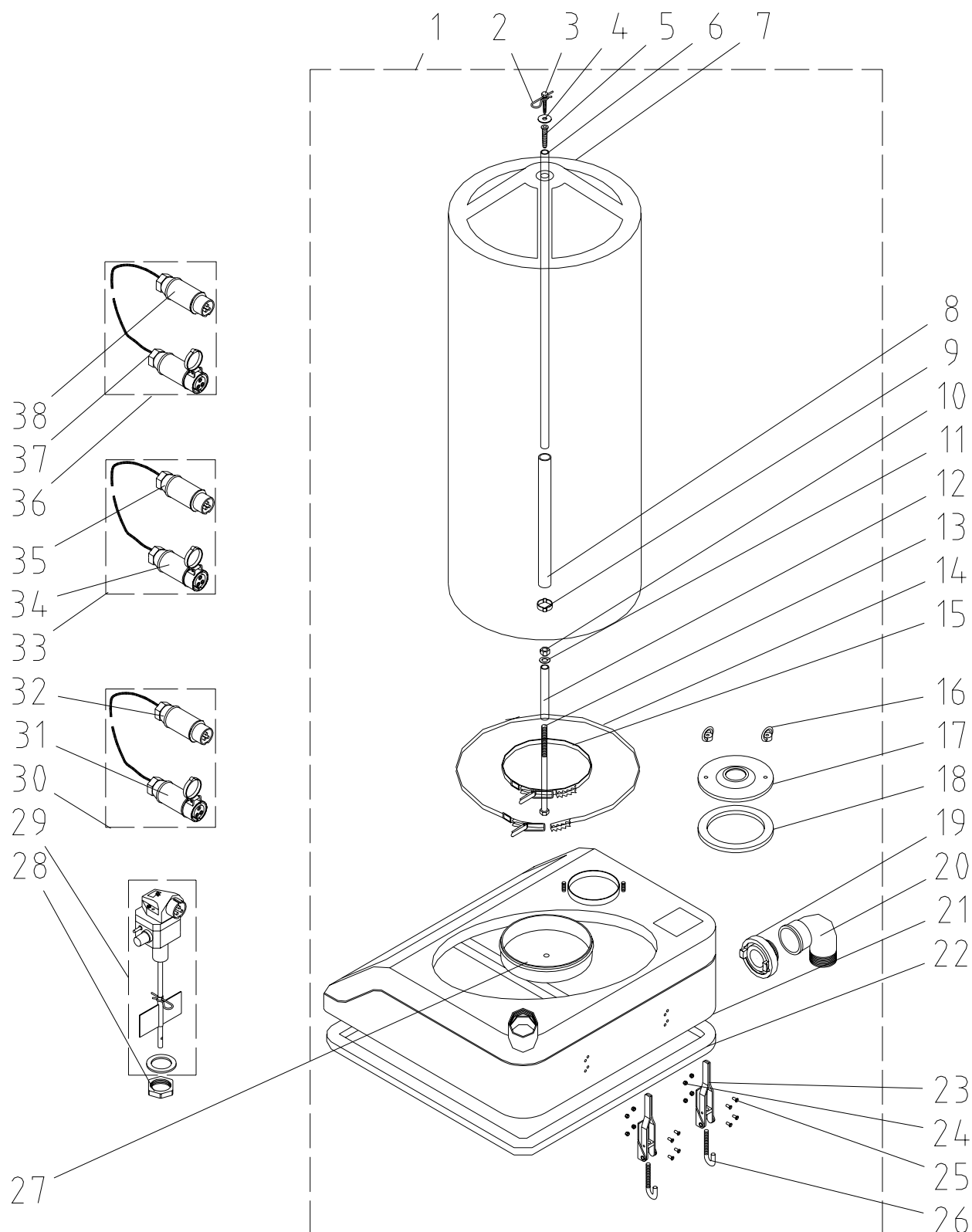
Spare parts drawing for injection hood E 1, old



Spare parts list for injection hood E 1, old

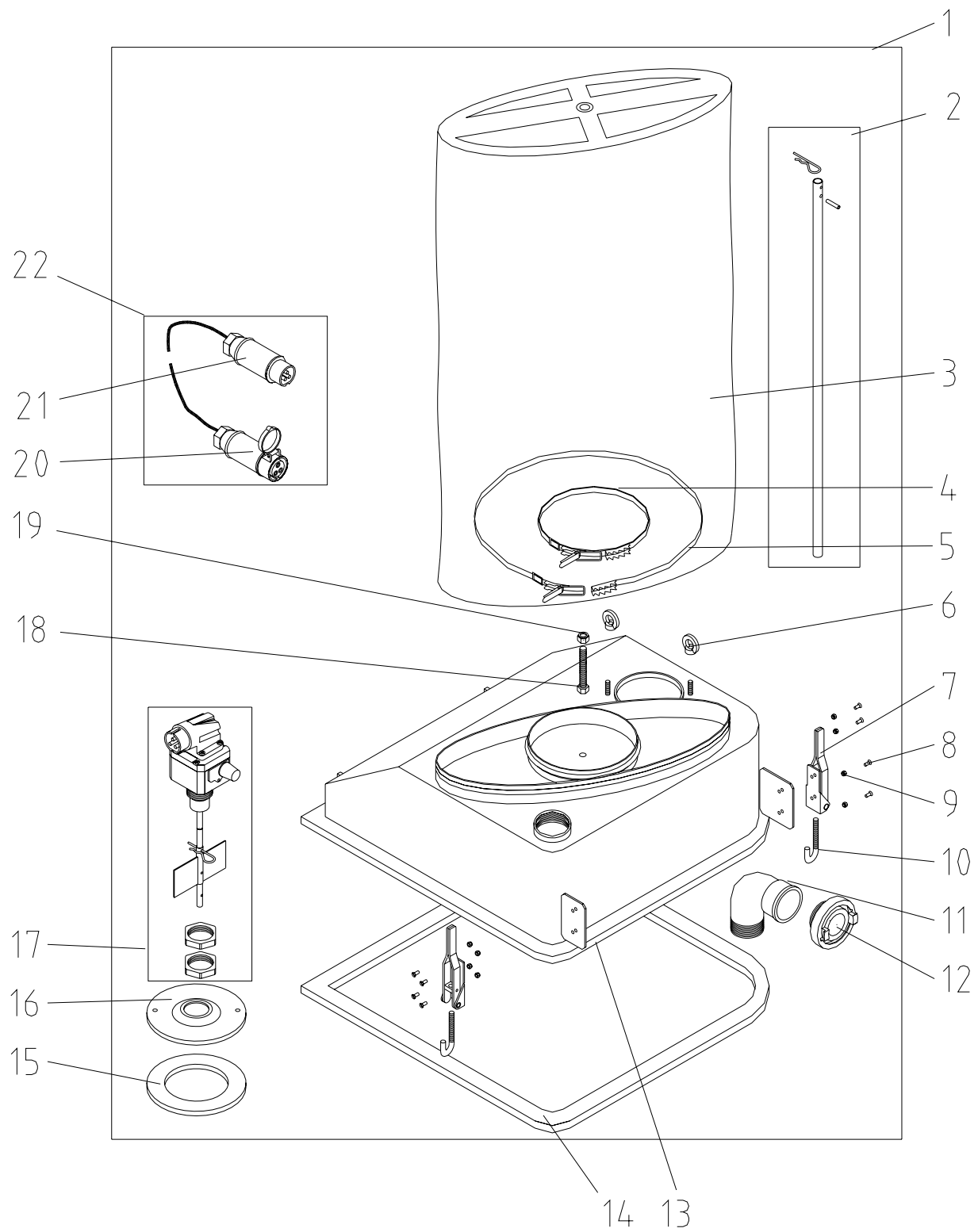
Item	Qty	Item no.	Description
1	1	20 42 37 00	Control cable 50m with plug and coupling CEE 3 x 16 A 12h white
2	1	20 42 94 00	Coupling CEE 3 X 16 A 12h white no. 715
3	1	20 42 82 00	Plug CEE 3 x 16 A 12h white no. 663
4	1	20 60 41 02	Dust filter hose 420 X 1100 for E 1
5	1	20 60 12 14	Support for round monofilter
6	1	20 42 38 00	Control cable 25m with plug and coupling CEE 3 x 16 A 12h white
7	1	20 42 82 00	Plug CEE 3 x 16 A 12h white no. 663
8	1	20 42 94 00	Coupling CEE 3 X 16 A 12h white no. 715
9	1	20 60 45 00	Tightening strap D=205 mm
10	1	20 70 73 01	Tightening strap D=424 mm
11	1	20 60 05 70	Gasket for delivery hood body 2400 mm long
12	1	20 60 02 15	Body for injection hood with round Monofilter RAL2004
13	2	20 60 23 10	Screw-in hook for cocking lever L=80 mm
14	8	20 20 66 02	Safety nut M5 DIN 985 galv.
15	8	20 20 71 07	Hex. screw M5 x 16 DIN 933 galv.
16	2	20 60 23 00	Cocking lever with hook
17	1	20 65 61 01	Coupling C DIN 2" ext. thread
18	1	20 20 38 50	Curved section 2" int. thread-ext. thread 45 ° no. 121 galv.
19	1	20 60 05 71	Gasket snap lock 20 x 10 x 600
20	2	20 60 68 02	Counternut 1 1/2" no. 310 galv.
21	3	20 20 78 20	Safety nut M 8 with flange galv.
22	1	20 60 25 02	Attachment lid for filling level indicator type SG06
23	1	20 60 02 14	Body with round Monofilter for injection hood E 1
24	1	00 01 00 75	Level indicator 42 V type SG12 plastic

Spare parts drawing for injection hood G 5



Spare parts list for injection hood G 5

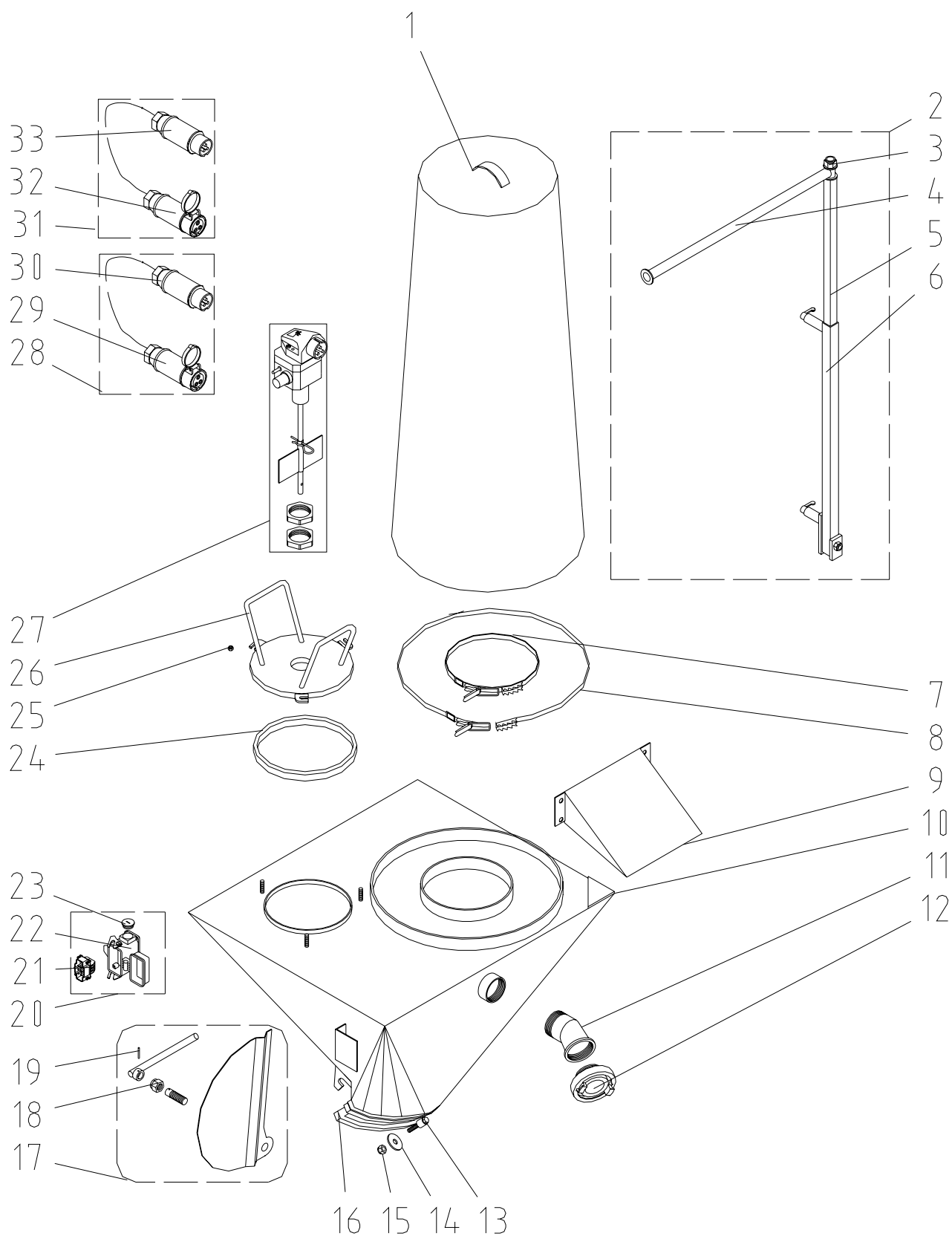
Item	Qty	Item no.	Description
1	1	00 04 43 48	Body of injection hood, injection hood, G 5 deep model, RAL 9002, cpl.
2	1	20 60 68 05	Spring plug 3 mm
3	1	00 02 33 82	Hex screw 8 x 50 DIN 571 zinc-pl.
4	1	20 20 93 20	Washer 8
5	1	00 06 97 43	Dowel plug 4 AS-K 12/76
6	1	00 04 46 46	Monofilter filter column, round top (deep) 950 lg.
7	1	20 60 41 02	Filter sack D 420 x 1100 for E 1
8	1	00 04 46 51	Water/air hose 3/4" x 350 mm
9	1	20 20 29 01	Hose clip 28-31 (P)
10	1	20 20 69 00	Hex nut M12 DIN 934 zinc-plated
11	1	20 20 90 00	U disc B 13 DIN 125 zinc-plated
12	1	00 04 46 47	Steel pipe 18 x 2.5 x 140
13	1	00 04 27 74	Hex screw M12 x 240 DIN 931 zinc-pl. 80 mm
14	1	20 70 73 01	Quick adjusting clasp, jaw width D 420-430 mm
15	1	20 60 45 00	Clip with clasp 10 x 660
16	1	20 20 79 50	Ring nut M8 DIN 582 zinc-pl.
17	1	00 00 82 43	Level sensor cover RAL 9002
18	1	00 04 72 40	Level sensor cover gasket G 5 deep
19	1	20 65 61 01	Coupling C DIN 2" AG
20	1	00 00 84 07	Curved section 2" 90° IG-AG no. 1a zinc-pl.
21	1	00 04 43 41	Body of injection hood, injection hood, G 5 deep model, RAL 9002
22	1	00 04 43 50	Sponge rubber gasket 20x30x2340, injection hood G 5 deep model
23	1	20 60 23 01	Tensioning lever
24	8	20 20 66 02	Nut M5 DIN 985 zinc-pl.
25	8	20 20 70 96	Screw M5 x 12 DIN 963 zinc-pl.
26	2	00 00 80 40	Hook for tensioning lever L=90 mm
27	1	00 04 43 43	Filter sack holder, injection hood, G 5 deep model, RAL 9002
28	1	20 60 68 02	Nut 1 1/2" no. 310 zinc-plated
29	1	00 01 00 75	Level sensor 42 V type SG12, plastic
30	1	20 42 38 50	Control cable 5 m with CEE plug and coupling 3 x 16 A, 12 h, white
31	1	20 42 94 00	CEE coupling 3 x 16 A, 12 h, white, no. 715
32	1	20 42 82 00	CEE plug 3 x 16 A, 12 h, white, no. 663
33	1	20 42 38 00	Control cable 25 m with CEE plug and coupling 3 x 16 A, 12 h, white
34	1	20 42 94 00	CEE coupling 3 x 16 A, 12 h, white, no. 715
35	1	20 42 82 00	CEE plug 3 x 16 A, 12 h, white, no. 663
36	1	20 42 37 00	Control cable 50 m with CEE plug and coupling 3 x 16 A, 12 h, white
37	1	20 42 94 00	CEE coupling 3 x 16 A, 12 h, white, no. 715
38	1	20 42 82 00	CEE plug 3 x 16 A, 12 h, white, no. 663

Spare parts drawing for injection hood G 5, old

Spare parts list for injection hood G 5, old

Item	Qty	Item no.	Description
1	1	00 00 82 41	Injection hood G 5 cpl. RAL9002
2	1	20 60 12 14	Support for round monofilter
3	1	20 60 41 02	Dust filter hose 420 X 1100 for E 1
4	1	20 60 45 00	Tightening strap D=205 mm
5	1	00 00 85 20	Tightening strap D=420 mm without spring
6	2	20 20 79 50	Ring nut M8 DIN 582 galv.
7	2	20 60 23 01	Cocking lever
8	8	20 20 70 96	Countersunk screw M5 x 12 DIN 963 galv.
9	8	20 20 66 02	Safety nut M5 DIN 985 galv.
10	2	00 00 80 40	Screw-in hook for cocking lever L=90 mm
11	1	00 00 84 07	Bend 2" 90° int. thread-ext. thread no. 1a galv.
12	1	20 65 61 01	Coupling C DIN 2" ext. thread
13	1	00 00 82 42	Body for injection hood G 5 RAL9002
14	1	00 00 96 38	Gasket rubber 40 x 20 x 2500
15	1	00 00 82 44	Gasket for cover level sensor
16	1	00 00 82 43	Cover for level indicator RAL9002
17	1	00 01 00 75	Level indicator 42 V type SG12 plastic
18	1	20 20 70 00	Hex. screw M12 x 100 DIN 933 galv.
19	1	20 20 89 00	Safety nut M12 DIN 985 galv.
20	1	20 42 94 00	Coupling CEE 3 X 16 A 12h white no. 715
21	1	20 42 82 00	Plug CEE 3 x 16 A 12h white no. 663
22	1	20 42 38 50	Control cable 5 m with plug and coupling CEE 3 x 16 A 12h white
22	1	20 42 38 00	Control cable 25 m with plug and coupling CEE 3 x 16 A 12h white
22	1	20 42 37 00	Control cable 50 m with plug and coupling CEE 3 x 16 A 12h white

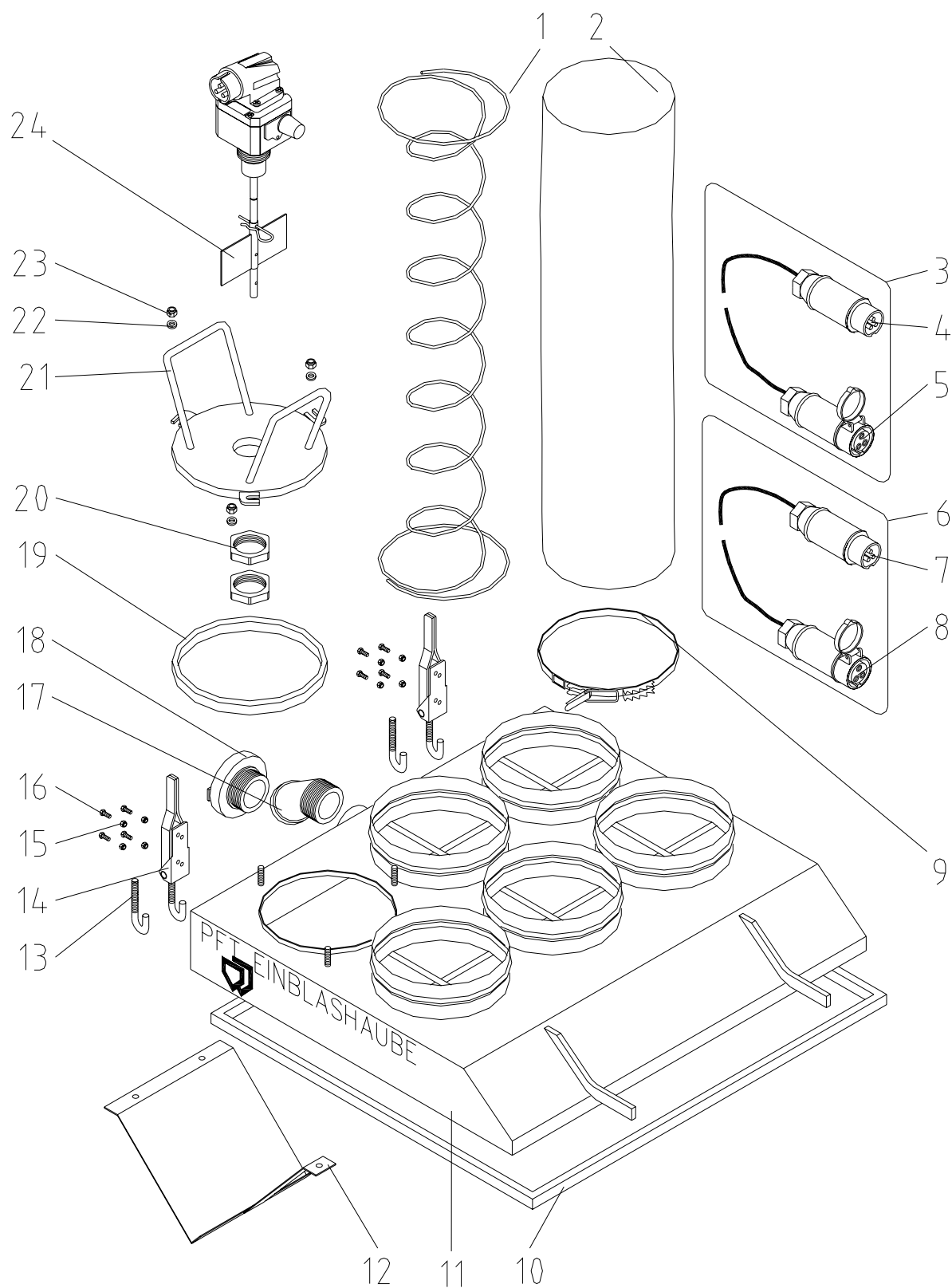
Spare parts drawing for injection hood Monojet



Spare parts list for injection hood Monojet

Item	Qty	Item no.	Description
1	1	20 60 44 00	MONOJET injection hood filter sack
2	1	20 60 12 13	Filter sack holder cpl. MONOJET
3	1	20 20 73 00	Nut M16
4	1	20 60 12 10	MONOJET cross arm filter sack holder
5	1	20 60 12 12	MONOJET filter sack holder inner pipe
6	1	20 60 12 11	MONOJET filter sack holder outer pipe
7	1	20 60 45 00	Clip with clasp 10 x 660
8	1	20 70 73 01	Quick adjusting clasp, jaw width D 420-430 mm
9	1	20 60 24 01	Plate for mono injection hood
10	1	20 60 12 03	MONOJET body of injection hood
11	1	20 20 38 50	Curved section 2" IG-AG 45°, no. 121 zinc-pl.
12	1	20 65 61 01	Coupling C DIN 2" AG
13	1	20 20 78 09	Hex screw M10 x 55 DIN 931 zinc-pl.
14	0	20 20 93 19	Washer 13 x 37 x 3
15	1	20 20 72 10	Nut M10 DIN 985 zinc-pl.
16	1	20 10 11 00	Drain opening gasket G 4 sponge rubber 20 x 15 x 670
17	1	20 10 81 30	Activation lever MONOJET hopper swivel flap
18	1	20 20 73 00	Nut M 16 DIN 985 zinc-plated
19	1	20 54 76 02	Dowel pin 5 x 36 DIN 1481
20	1	20 42 85 03	Blind plug 6-pin HAN 6 E
21	1	20 42 84 07	Male insert 6-pin HAN 6 E
22	1	00 00 10 80	Housing 6-pin HAN 6 E
23	1	20 43 10 00	Stopper PG 16
24	1	20 60 05 71	Quick coupling gasket 20 x 10 x 600
25	1	20 20 62 00	Nut M6 DIN 985 zinc-pl.
26	1	20 60 25 02	Level sensor quick coupling SG06
27	1	00 01 00 75	Level sensor 42 V type SG12, plastic
28	1	20 42 38 00	Control cable 25 m with CEE plug and coupling 3 x 16 A, 12 h, white
29	1	20 42 94 00	CEE coupling 3 x 16 A, 12 h, white, no. 715
30	1	20 42 82 00	CEE plug 3 x 16 A, 12 h, white, no. 663
31	1	20 42 37 00	Control cable 50 m with CEE plug and coupling 3 x 16 A, 12 h, white
32	1	20 42 94 00	CEE coupling 3 x 16 A, 12 h, white, no. 715
33	1	20 42 82 00	CEE plug 3 x 16 A, 12 h, white, no. 663

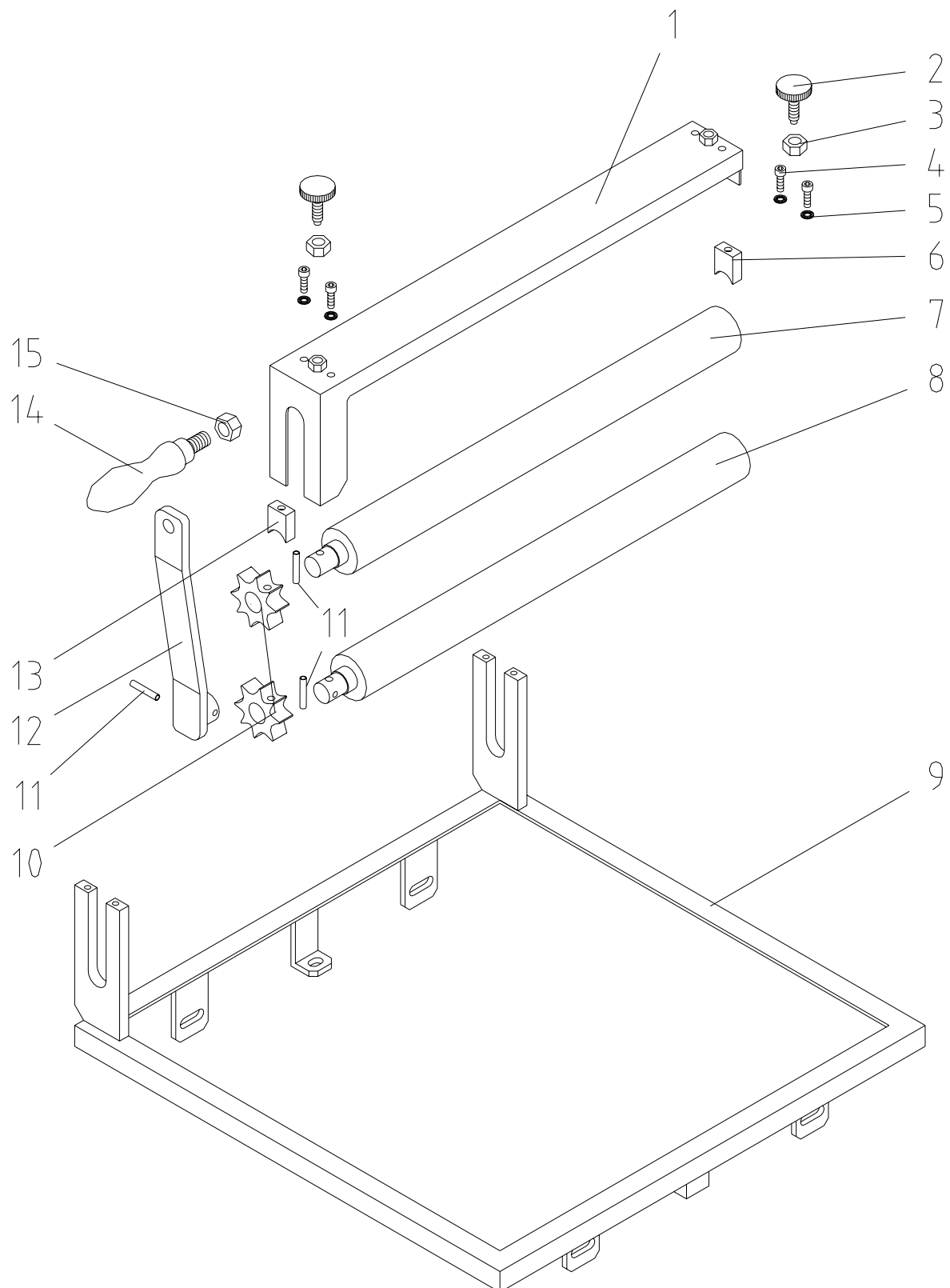
Spare parts drawing for injection hood E 5



Spare parts list for injection hood E 5

Item	Qty	Item no.	Description
1	5	20 60 46 00	Spring for filter
2	5	20 60 41 00	Dust filter with hooks 100 cm (cotton)
3	1	20 42 38 00	Control cable 25 m with plug and coupling CEE 3 x 16 A 12h white
4	1	20 42 82 00	Plug CEE 3 x 16 A 12h white no. 663
5	1	20 42 94 00	Coupling CEE 3 X 16 A 12h white no. 715
6	1	20 42 37 00	Control cable 50m with plug and coupling CEE 3 x 16 A 12h white
7	1	20 42 82 00	Plug CEE 3 x 16 A 12h white no. 663
8	1	20 42 94 00	Coupling CEE 3 X 16 A 12h white no. 715
9	5	20 60 45 00	Tightening strap D=205 mm
10	1	20 60 30 00	Gasket for injection hood body 2400 mm long
11	1	20 60 12 02	Body for E 5 cpl.
12	1	20 60 24 00	Deflector for injectionhood
13	2	20 60 23 10	Screw-in hook for cocking lever L=80 mm
14	2	20 60 23 00	Cocking lever with hook
15	8	20 20 66 02	Safety nut M5 DIN 985 galv.
16	8	20 20 71 07	Hex. screw M5 x 16 DIN 933 galv.
17	1	20 20 38 50	Curved section 2" int. thread-ext. thread 45 ° no. 121 galv.
18	1	20 65 61 01	Coupling C DIN 2" ext. thread
19	1	20 60 05 71	Gasket snap lock 20 x 10 x 600
20	2	20 60 68 02	Counternut 1 1/2" no. 310 galv.
21	1	20 60 25 02	Attachment lid for filling level indicator type SG06
22	3	20 20 93 13	Washer B 8.4 DIN 125 galv.
23	3	20 20 72 00	Safety nut M 8 DIN 985 galv.
24	1	20 60 63 01	Level sensor type Berger

Spare parts drawing for bag squeezer



Spare parts list for bag squeezer

Item	Qty	Item no.	Description
1	1	20 17 66 17	Sheet metal for bag squeezer
2	2	20 20 98 10	Knurled screw M8 x 30
3	2	20 20 64 00	Hex. nut M8 DIN 934 galv.
4	4	20 20 96 99	Hex. socket head screw M5 x 16 DIN 912 galv.
5	4	20 20 93 16	Washer A 5,3 DIN 6798 galv.
6	1	20 17 66 14	Sheet metal for bag squeezer brass
7	1	20 17 66 13	Roller for bag squeezer 488 mm length
8	1	20 17 66 12	Roller for bag squeezer 468 mm length
9	1	20 17 66 10	Frame for bag squeezer
10	2	20 17 66 11	Toothed wheel for bag squeezer
11	3	20 20 85 14	Dowel pin 5 x 28 DIN 1481
12	1	20 17 66 15	Crank handle for bag squeezer
13	1	20 17 66 14	Sheet metal for bag squeezer brass
14	1	20 17 66 16	Handle axle part steel galv. DIN 98-32 Al
15	1	20 20 69 00	Hex. nut M12 DIN 934 galv.