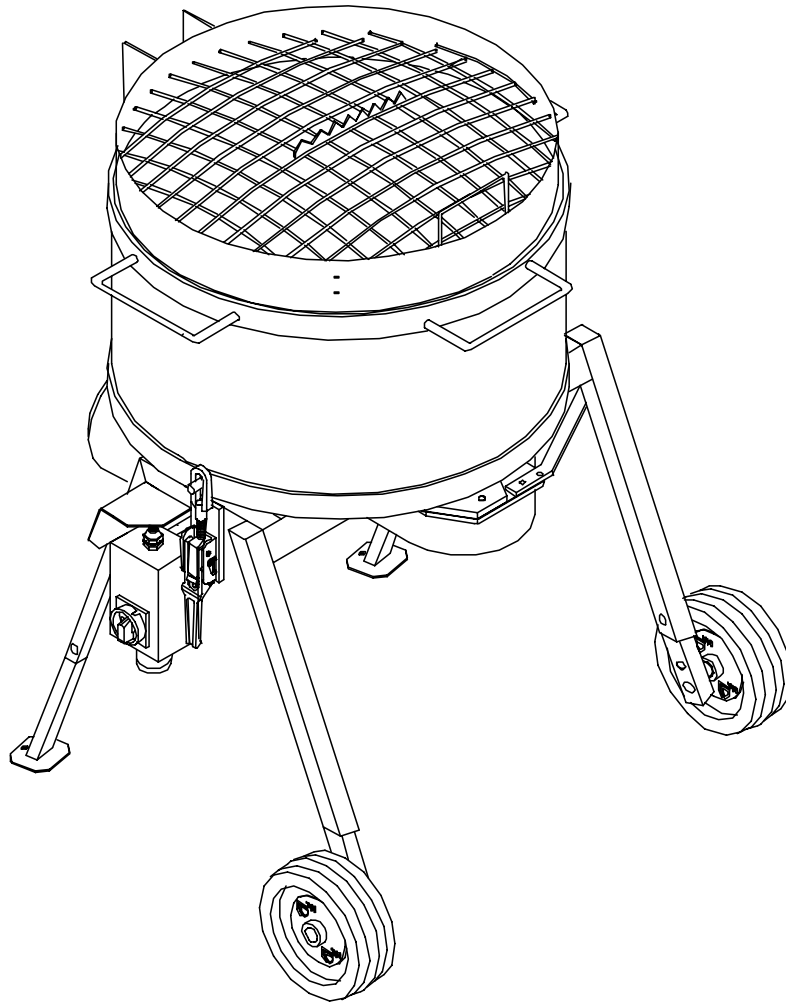


MANUAL AND SPARE PART LIST
(Item number of the operating instructions 00 07 79 19)
(Item number of the machine 20 80 00 00)

CONTINUOUS MIXER PFT MULTIMIX



WE KEEP THINGS MOVING



Dear PFT Customer,

Congratulations on your purchase. You have made a wise choice, because you appreciate the quality of a brand from a company with a name that has exemplified quality.

The **PFT MULTIMIX** continuous mixer uses state-of-the-art technology. It has been designed in a task-optimised way so that it can be a trustworthy aid for rough construction site conditions.

These operating instructions should always be stored and kept at hand at the machine's application site. They give you information on the various functions of the system. Study the operating instructions thoroughly before starting the machine, as we claim no responsibility for accidents or damage to the machine caused by incorrect operation.

The **PFT MULTIMIX** continuous mixer will be a trustworthy aid, if it is operated correctly and handled with care.

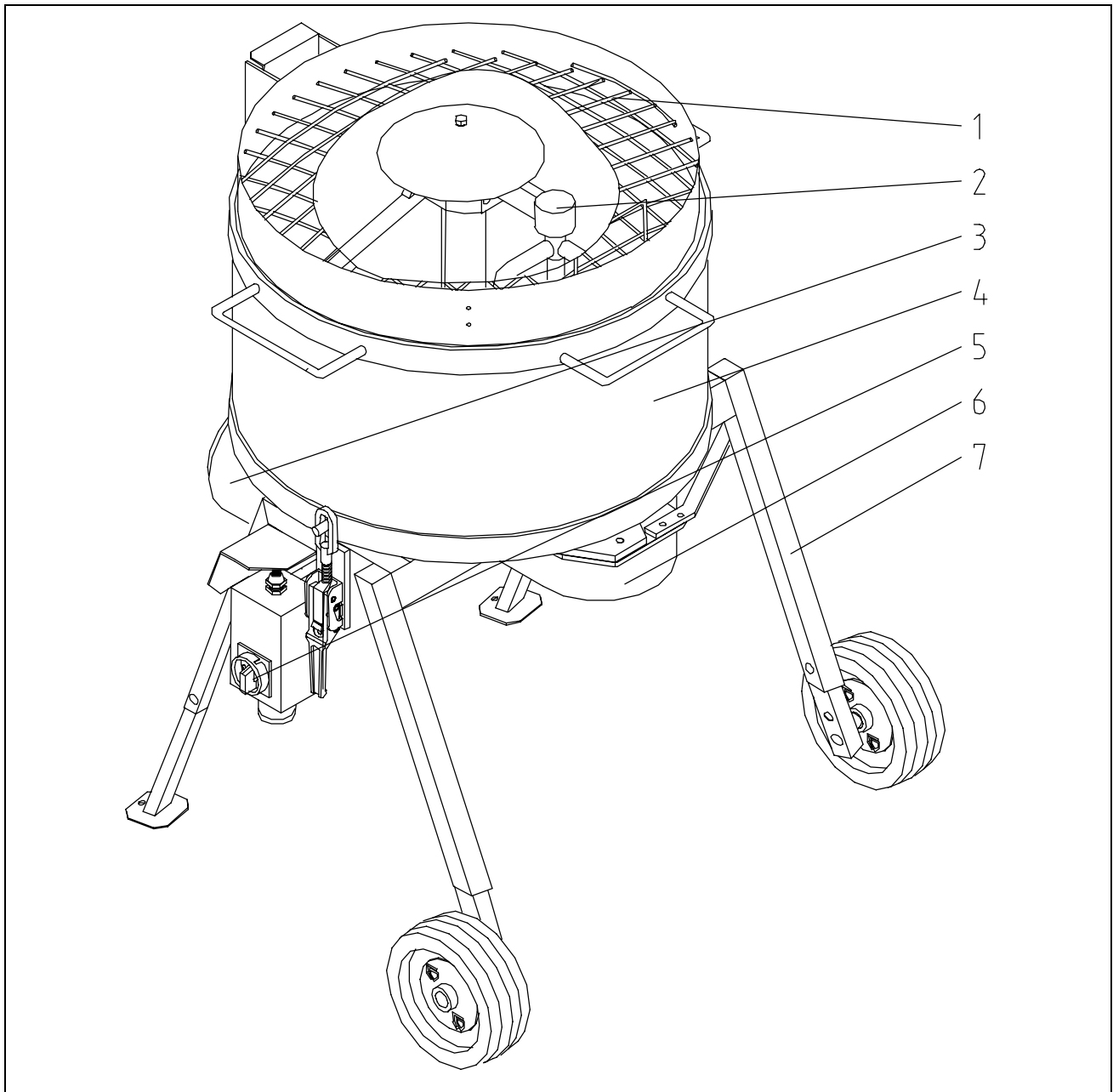
It is prohibited to forward this document, even excerpts, without our written authorisation. All technical specifications, diagrams etc. are subject to copyright law. All rights, errors and modifications reserved.



WARNING!

The enclosed guarantee card must be sent in – no card, no guarantee.

General information	3
Contents	4
Overview	5
Basic safety instructions	7
Setting values	9
Initial Start	9
Measures at the end of work	10
Transport	10
Maintenance	10
Check list	10
Circuit diagram	11
Spare part lists	12
Technical Data	18



- | | |
|---|--------------------------|
| 1. Protection grille with safety shutdown | 5. Main reversing switch |
| 2. Mixing unit | 6. Material outlet |
| 3. Worm gear motor | 7. Main basic frame |
| 4. Material hopper | |

The **PFT MULTIMIX** is a continuous mixer designed for mixing loads of factory-produced, pre-mixed, ready-to-use mortar or customised mixtures with water or other liquids.

Please observe the processing guidelines of the material manufacturer.

The machine can be dismantled for transport and cleaning in relatively light, portable individual parts.

When operating the machine, the following aspects must be observed:

1. Connection worksite power – connection plug
2. Connection plug safety switch – main switch plug socket

The following terms and symbols are used in this manual for particularly important information:

NOTE:

Special information for running the machine efficiently.

**WARNING!**

Special information, regulations and restrictions concerning the prevention of damage.

**WARNING!**

The machine should only be used if it is in technically perfect condition and in compliance with the regulations. Pay attention to safety and the operating instructions. It is especially important to immediately rectify all faults which could impair safety. Proper machine operation includes following the instructions in the operating manual and complying with the inspection and maintenance conditions.

In order to make operating our machines as easy as possible for you, we would like to briefly inform you of the most important safety regulations. If you comply with these regulations, you will be able to use our machine in a safe and quality-assuring manner for a long time to come.

1. Follow all safety instructions and danger warnings on the machine. Ensure that all instructions are kept legible.
2. Inspect the machine for visible damage and defects at least once every shift! If you notice any safety-threatening alterations to the machine or its operating behaviour, stop the machine immediately and notify your supervisor.
3. Do not attempt to modify the machine in any way which may impair its safety without first consulting your machine dealer. This also applies to the installation of unchecked "safety devices".
4. All spare parts must comply with the technical requirements of the manufacturer. This is guaranteed for all original PFT parts.
5. Only trained or authorized personnel should operate the machine. Clearly define all lines of responsibility for operation, equipping, service and maintenance.
6. Personnel undergoing training should only be allowed to operate the machine under the supervision of experienced personnel.
7. All electrical work should be carried out by a qualified electrician or by trained personnel under the supervision of a qualified electrician and should comply with electro-technical regulations.
8. Observe all instructions for turning the machine on and off. Watch control lamps for signals.
9. If the machine is completely switched off for maintenance and repair work, it must be ensured that it cannot be switched back on accidentally (for example, lock the main switch and remove the key, or attach a warning sign to the main switch).
10. Before cleaning the machine with a water jet, seal all openings through which water could enter and thereby impair the safety and proper functioning of the machine (electric motors and control boxes). After cleaning, remove all covers.
11. Only use original fuses with prescribed amps!
12. Disconnect the machine from any external energy source before you relocate it, even if you are only moving it a short distance. Prior to putting the machine back into service, it should be connected to the mains correctly.
13. Set up the machine on ground that is a stable and level as possible and secure it against unintentional movements.
14. If the permanent noise level exceeds 85 dB(A), appropriate noise protection devices must be provided.
15. Have the machine inspected by a qualified person. This should happen at least once a year.

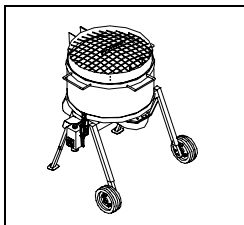


Setting values

Motor protection switch

2.2 kW motor 400 V, 6 A, set permanently

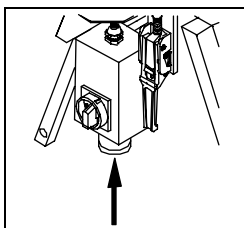
The PFT MULTIMIX is fitted with an overload and low voltage circuit breaker. If a fault occurs, the main reversing switch switched to the zero position. Then switch the machine back on.



Initial Start

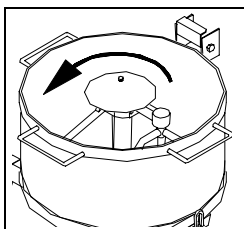
Set up the machine so that it is level and stable.

Wheels, supports and shims may not sink into the ground.



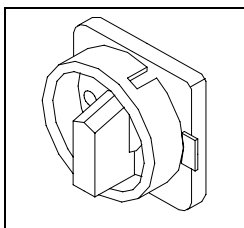
The PFT MULTIMIX may only be connected to a worksite switchgear assembly with a 16 A fuse and FI safety switch. The connection cable must be equivalent to the H07 RN-F 5x2.5 version.

We recommend the use of PFT power cable 5x2.5 mm², 50 m with CEE plug and coupling (item No. 20 42 33 50).



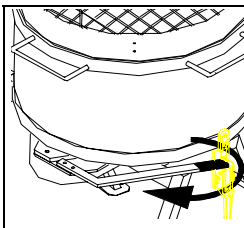
Check direction of rotation:

The mixing unit runs anticlockwise.



If the direction of rotation is incorrect, turn the main reversing switch to the zero position. Push the laterally protruding selection plate to the opposite side to change the direction of rotation. Then switch the machine back on.

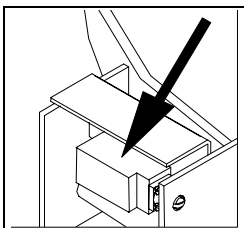
Always first load the material hopper of the PFT MULTIMIX with approx. 1/3 of the aggregate and then add water and binding agent. Switch on and then add the remaining 2/3 of the aggregate.



If possible, do not switch off the mixer when the mixing drum is full or during the mixing procedure.

Prevent grains of material larger than 6 mm from entering the material hopper as these can block the machine.

The material hopper is emptied via the segment slide on the base of the container directly into a conveying pump below or into a wheelbarrow or container. Empty the hopper when the mixing unit is running. The slide must be opened only as far as is necessary for emptying.



The protection grille of the PFT MULTIMIX is protected with a safety limit switch. If the protection grille is opened, the system switches off immediately. The system must be switched on again after the protection grille has been closed.



WARNING!

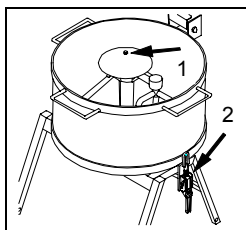
Disconnect the power supply before starting cleaning.

Procedure at the end of work

After work has finished, the material hopper and the slide, as well as the mixing unit should be cleaned thoroughly. They must be completely free of hardened and encrusted material. The slide guide must be completely clean and slightly lubricated to ensure that it can open and close smoothly.

The arms of the turbo mixing unit must turn easily.

Transport, maintenance



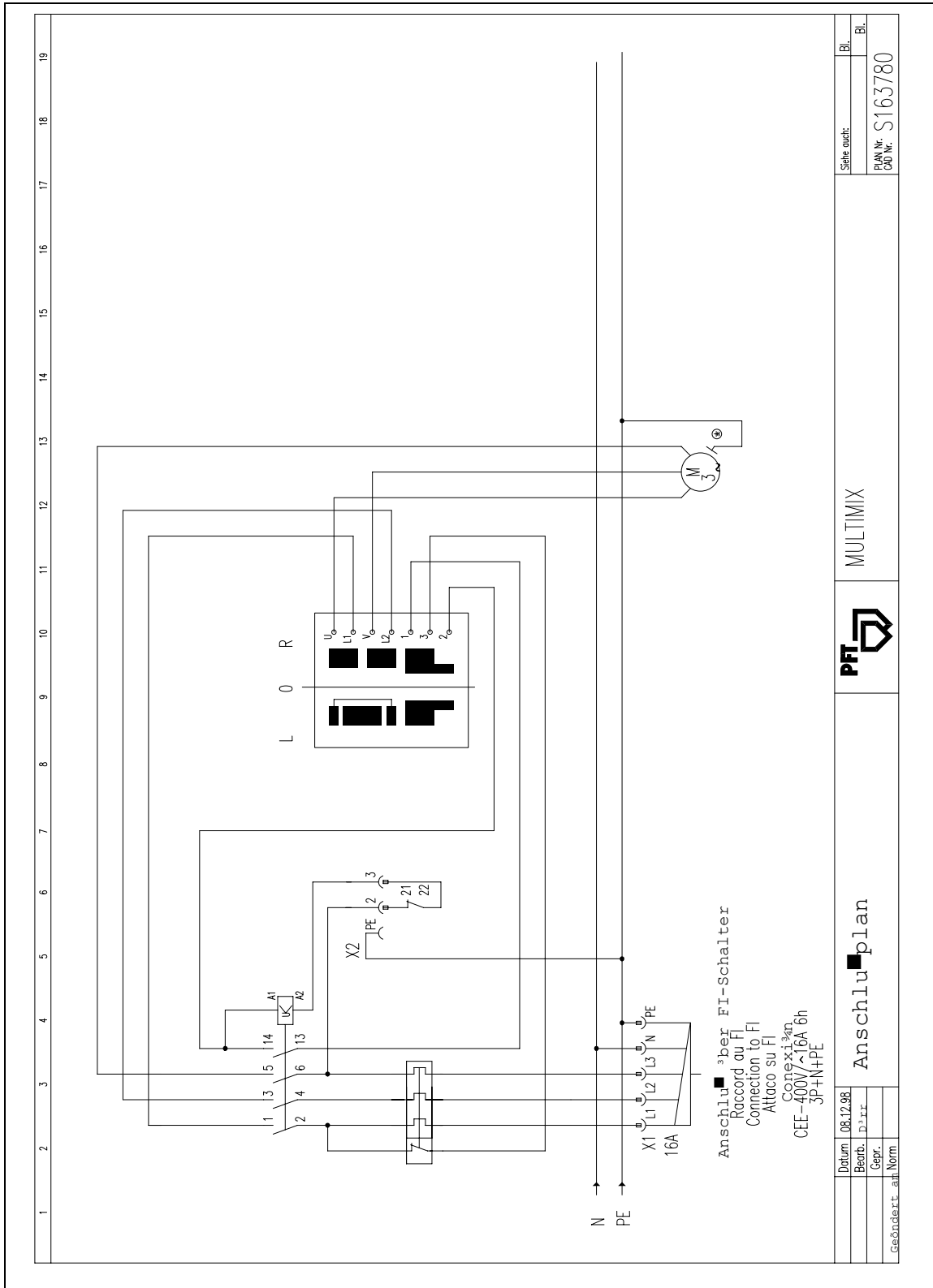
The mixing unit and the material hopper of the PFT MULTIMIX can be removed from the frame with the motor for the transport and maintenance. To do this, unscrew the fixing screw (1) of the mixing unit and pull the unit off the drive shaft. Afterwards, open the two quick connections (2) and lift the material hopper off the frame.

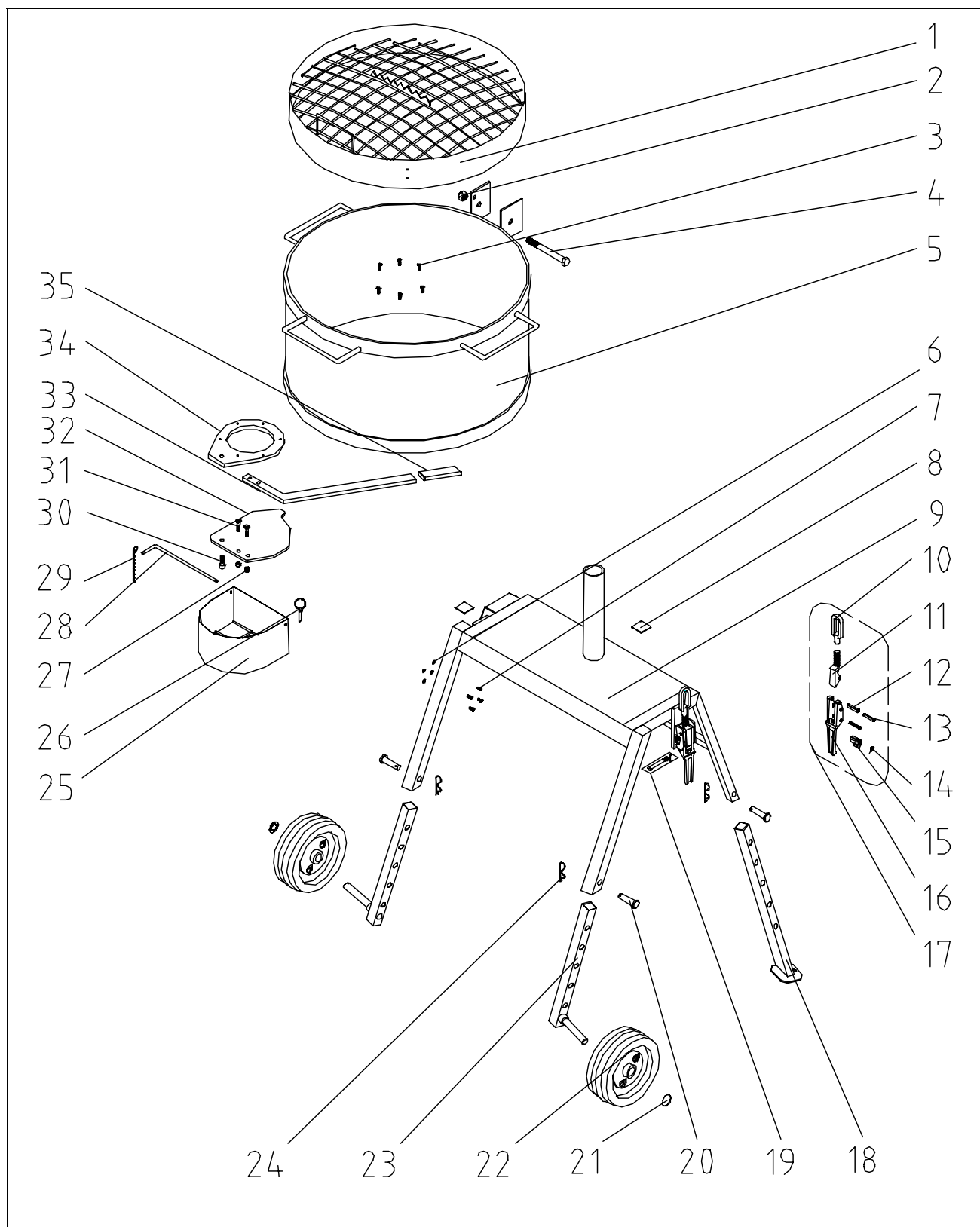
When reassembling, make sure that the slide is opposite the motor. When replacing the mixing unit on the drive shaft, the wedge must be inserted in the appropriate groove.

No other maintenance is required for the motor and gearbox, the gearbox has been lubricated for its entire service life.

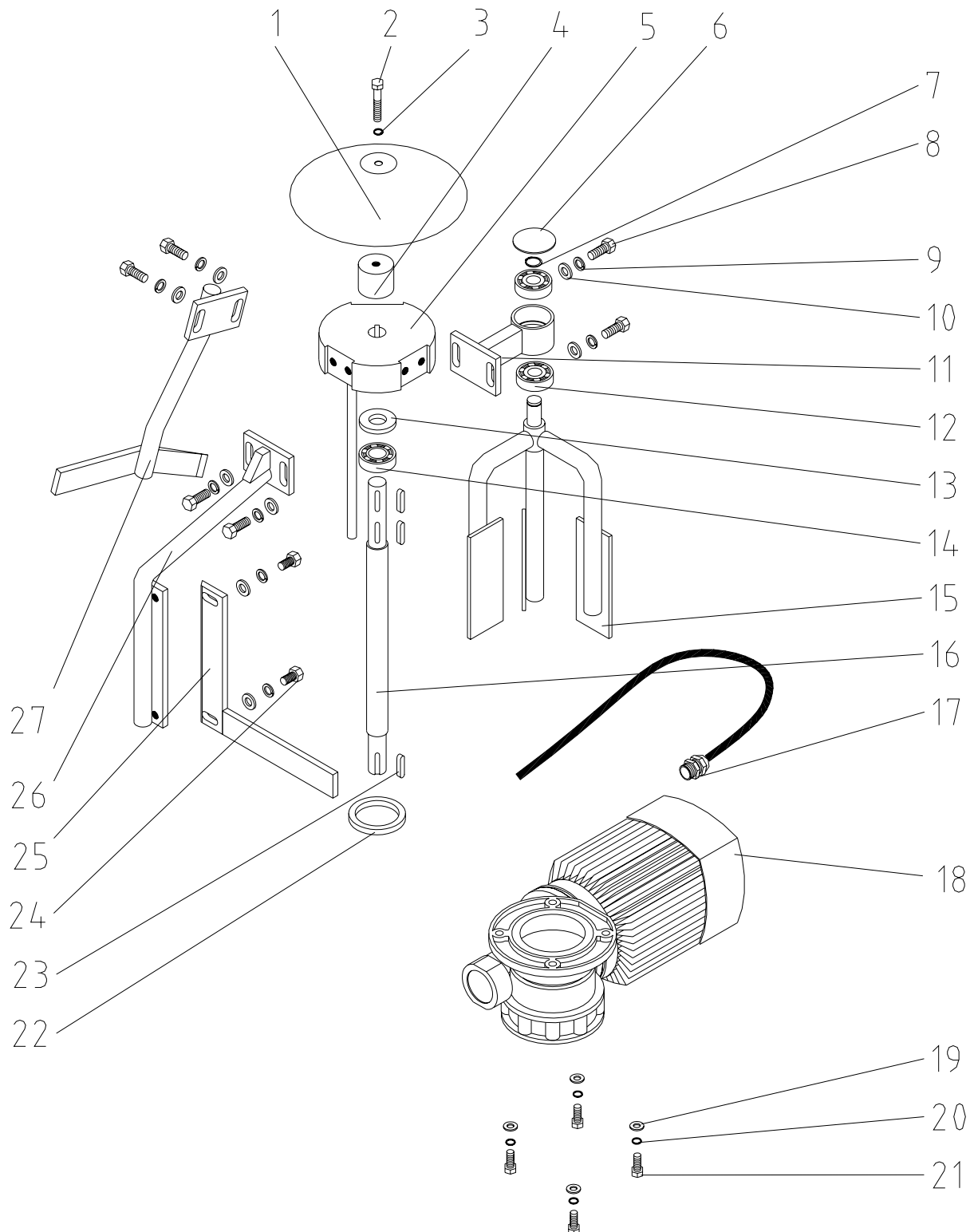
How can problems with the PFT MULTIMIX be avoided or quickly rectified?

Fault	Cause	Remedy
Machine does not start	<i>Electricity</i> - Correct connection to the worksite switchgear assembly? - Power supply okay? - Phase missing? - FI safety switch activated? - Mains on? - Safety shutdown triggered	Close grille, check switch
	<i>Material</i> - Material hopper too full - Mixing unit jammed	Disconnect and clean slide and then restart machine
Machine does not move	<i>Electricity</i> - Safety shutdown triggered - Motor safety triggered due to overfilling of jammed mixing unit	Close grille, check switch Disconnect and clean slide and then restart machine

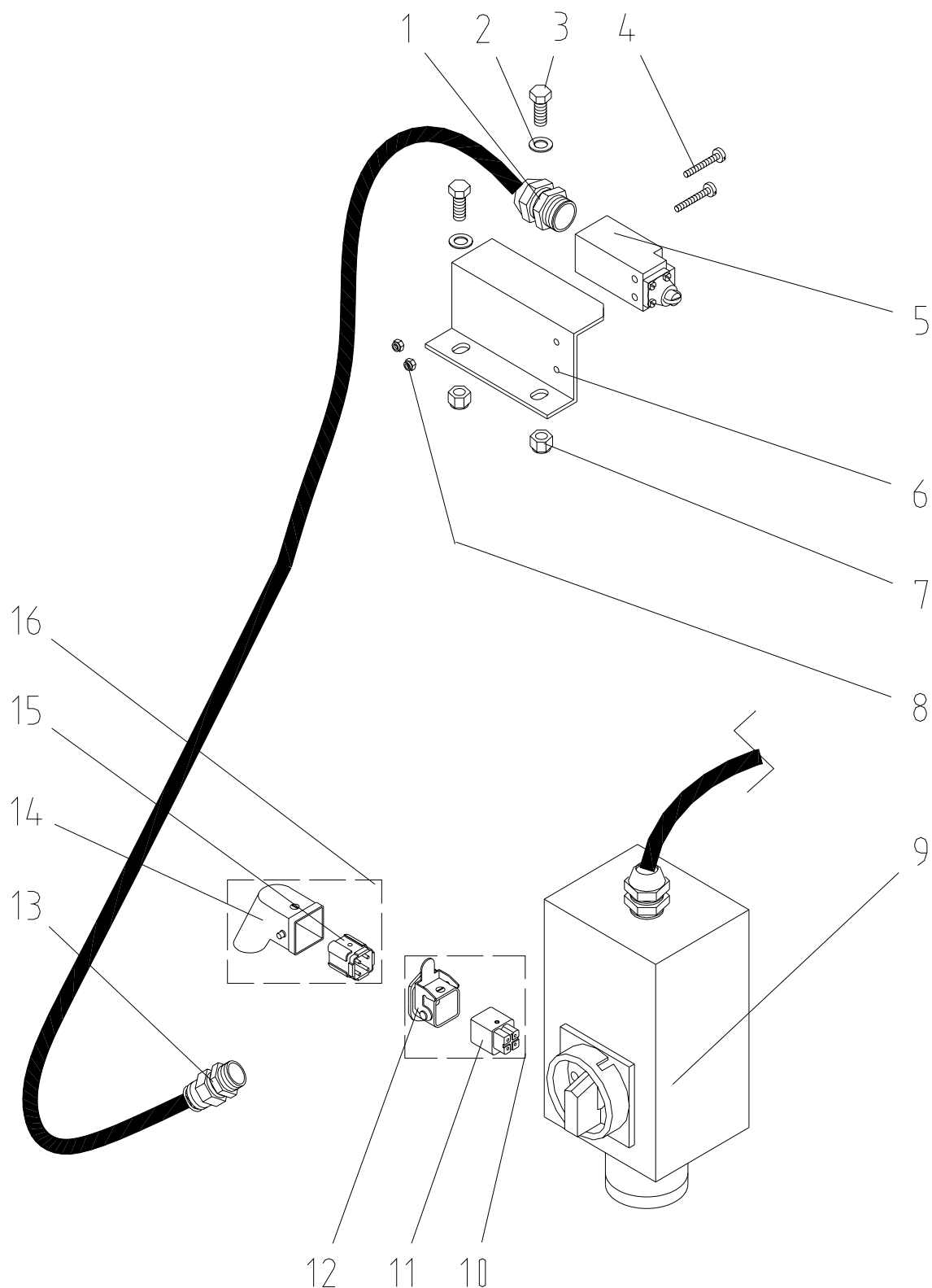




Item	Qty	Item no.	Article description
1	1	00 00 79 75	MULTIMIX protection grille
2	1	20 20 73 00	Nut M16 DIN 985 zinc-pl.
3	6	00 00 80 23	Screw M6 x 12 DIN 965
4	1	20 20 81 04	Hex screw M16 x 150 DIN 931 zinc-pl.
5	1	00 00 79 74	MULTIMIX material hopper
6	4	20 20 93 17	U disk B 5.3 DIN 125 zinc-pl.
7	4	20 20 64 07	Cylinder head screw M5 x 10 DIN 84
8	2	00 01 04 63	Cap (PVC) 40 x 40
9	1	00 00 79 72	MULTIMIX frame
10	1	20 20 99 71	Nut for snap lock M14 x 1.5
11	1	20 20 99 74	Screw for snap lock
12	2	20 20 85 19	Dowel pin 8 x 40 DIN 1481
13	1	20 54 76 02	Dowel pin 5 x 36 DIN 1481
14	1	20 10 08 04	Return spring
15	1	20 10 08 02	Locking device snap lock
16	1	20 10 08 03	Lever snap lock
17	2	20 10 08 01	Snap lock with catch
18	2	00 00 79 90	MULTIMIX support foot
19	2	20 20 85 22	Cotter bolt 8 H11 x 58 x 54 with disk and splint zinc-pl.
20	4	00 00 79 92	Bolt B16 H11 x 60 DIN 1444 zinc-pl.
21	2	20 20 86 03	Fast catch with cap 20s x N 2 7
22	2	20 11 93 50	Spare-wheel 230 x 85
23	2	00 00 79 88	MULTIMIX support foot with wheel axle
24	4	20 02 70 11	Spring plug 4 mm
25	1	00 00 79 85	MULTIMIX mortar outlet flange
26	1	20 10 10 10	Splint D 4.5 with ring
27	2	20 20 72 00	Nut M8 DIN 985 zinc-pl.
28	1	00 00 79 86	Pin, MULTIMIX outlet
29	1	20 55 29 10	Safety chain 2 mm 250 mm long K20
30	1	00 00 79 84	MULTIMIX slide fixing screw
31	2	00 00 80 22	Screw M8 x 35 DIN 963 zinc-pl.
32	1	00 00 79 76	MULTIMIX slide, zinc-pl.
33	1	00 00 79 80	Lever for MULTIMIX slide
34	1	00 00 79 78	MULTIMIX slide sealing flange
35	1	00 01 04 62	MULTIMIX swivel arm handle



Item	Qty	Item no.	Article description
1	1	00 00 79 95	Cover for mixing unit MULTIMIX RAL2004
2	1	20 20 78 09	Hex screw M10 x 55 DIN 931 zinc-pl.
3	1	20 20 91 11	Spring washer A 10 DIN 127 zinc-pl.
4	1	00 00 79 94	Spacer for cover MULTIMIX RAL 2004
5	1	00 00 81 14	Holder for MULTIMIX mixing arm
6	1	00 01 05 32	Lamellae plugs for round pipes 55 x 1-3
7	1	00 00 81 23	Security ring D 20 x 1.2 DIN 471
8	6	20 20 68 01	Hex screw M12 x 30 DIN 933 zinc-pl.
9	8	20 20 91 10	Spring washer B 12 DIN 127 zinc-pl.
10	8	20 20 90 00	U disk B 13 DIN 125 zinc-pl.
11	1	00 00 81 47	MULTIMIX bearing arm
12	2	00 00 81 22	Grooved ball bearing 6304 2RS C3
13	1	00 01 07 07	Sealing ring shaft AS 25 x 52 x 7 DIN 3760-NB
14	1	20 12 16 14	Grooved ball bearing 6205 2RS
15	1	00 00 81 19	MULTIMIX turbo mixing arm
16	1	00 00 79 93	MULTIMIX drive shaft
17	1	00 04 11 42	Connector skintop M25 x 1.5
18	1	00 04 14 47	Gearbox 2.2 kW K20 R90L4 230/400 V
19	4	20 20 90 10	U disk B 10.5 DIN 125 zinc-pl.
20	4	20 20 91 11	Spring washer A 10 DIN 127 zinc-pl.
21	4	20 20 99 31	Hex screw M10 x 25 DIN 933 zinc-pl.
22	1	00 00 81 20	MULTIMIX frame seal
23	3	20 13 65 03	Spring A 8 x 7 x 36 DIN 6885
24	2	20 20 99 63	Hex screw M12 x 25 DIN 933 zinc-pl.
25	1	00 00 81 15	MULTIMIX mixing arm scraper, external
26	1	00 00 81 16	MULTIMIX mixing arm, external
27	1	00 00 81 18	MULTIMIX mixing arm, centre



Item	Qty	Item no.	Article description
1	1	00 04 11 27	Connector skintop M20 x 1.5
2	2	20 20 93 13	U disk B 8.4 DIN 125 zinc-pl.
3	2	20 20 61 00	Hex screw M8 x 20 DIN 933 zinc-pl.
4	2	20 20 64 09	Cylinder head screw M4 x 30 DIN 84
5	1	00 00 73 81	MULTIMIX limit switch
6	1	00 00 79 87	MULTIMIX limit switch faucet prolongation
7	2	20 20 72 00	Nut M8 DIN 985 zinc-pl.
8	2	20 20 62 03	Nut M4 DIN 985 zinc-pl.
9	1	00 00 13 50	MULTIMIX 400 V on/off switch
10	1	20 42 98 00	Coupling 4-pin HAN 3A with female insert
11	1	20 42 86 07	Female insert 4-pin, HAN 3A
12	1	20 42 86 04	Housing 4/5-pin, HAN 3A/HA 4
13	1	20 43 05 00	Connector skintop PG 11
14	1	20 42 86 05	Socket box 4- + 5-pin angled
15	1	20 42 86 06	Male insert 4-pin HAN 3A
16	1	20 42 86 00	Plug for control cable 4-pin with male insert

Drive	Worm gear motor	400 V
		50 Hz
		2.2 kW
Motor speed		approx. 115 RPM
Power consumption		6 A at 400 V
Electrical connection		400 V rotary current
		16 A
Fuse protection		3 x 16 A slow-blow
Power unit		min. 7.5 kVA
Max. grain size		6 mm
Ready-mixed product		approx. 80 kg
Dimensions and weights	Hopper capacity	120 litres
	Filling height	1070 mm
	Overall length	1000 mm
	Overall width	1030 mm
	Overall height	1070 mm
	Overall weight	143 kg

0

WE KEEP THINGS MOVING



Knauf PFT GmbH & Co. KG
PO Box 60 D-97343 Iphofen
Einersheimer Strasse 53 D-97346 Iphofen

Telephone +49 (0) 93 23/31-760
Fax +49 (0) 93 23/31-770
Email info@pft-iphofen.de
Internet www.pft.de